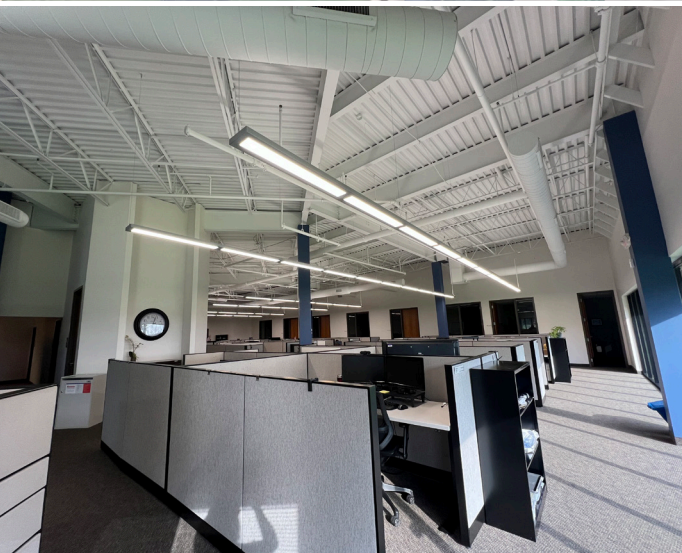


# 7550 Meridian Circle N.

For Lease



**Nick Leviton, SIOR**  
Senior Vice President  
+1 952 237 5694  
nick.leviton@colliers.com

**Claire Roberts**  
Vice President  
+1 612 991 2255  
claire.roberts@colliers.com

1600 Utica Ave S, Suite 300  
Minneapolis, MN 55416  
+1 952 897 7700  
colliers.com



# Property Overview

Address 7550 Meridian Circle North, Maple Grove, MN

Available Suite 100: 15,276 SF

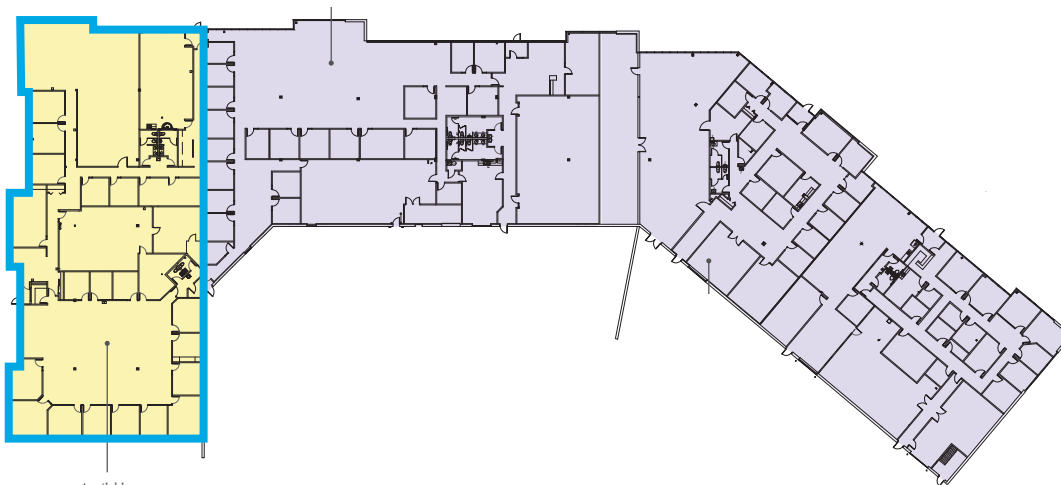
Net Rate \$14.00 PSF

Estimated 2026 Tax Total: \$6.75 PSF  
*\*CAM covers the cost of maintenance, repair and replacement of HVAC units serving the premises*

Clear Height 14'

Loading One (1) dock door with ability to add docks

**\*48 hour notice required to tour space**



Available  
15,276 SF

## Amenities

- Ample surface parking
- Excellent glass line
- Visibility to Hwy 169
- Easy access to Hwy 169 and 94
- Close proximity to Arbor Lakes retail and restaurant amenities

### Contact US

#### Nick Leviton, SIOR

Senior Vice President  
+1 952 237 5694  
nick.leviton@colliers.com

#### Claire Roberts

Vice President  
+1 612 991 2255  
claire.roberts@colliers.com



Accelerating success.

1600 Utica Ave S, Suite 300  
St. Louis Park, MN 55416  
P: +1 952 897 7700  
colliers.com

# Maple Grove Amenities



Main Street

Arbor Lakes North

Main Street

**rack**  
**BEST BUY**  
**DAVID'S BRIDAL**  
**LaB**  
**NOORDSTROM FURNITURE**  
**Best of the Best**  
**BOYS FURNITURE**  
**COAL STONE**  
**COACH**  
**CRANE**  
**FLOOR DECOR**  
**SIERRA**  
**FIVE GUYS**  
**CHICO'S**  
**TF Mobile**

**Villages at Arbor Lakes**  
**WATERS**  
**SPRINGHILL SUITES**  
**Tile Cleaners**  
**Residence Inn**  
**MILAN**  
**Starbucks**  
**sleep number**  
**spaviva**  
**WellHaven**  
**CRISPO GREEN**  
**Scholar Shoes**  
**Dom CA**  
**at&t**

**Fountains at Arbor Lakes**  
**verizon**  
**DOLLAR TREE**  
**FRESHLY LEAF**  
**crumbl**  
**LOWE'S**  
**Great Clips**  
**Klein Bank**  
**STRETCH LAB**  
**COURTYARD**  
**WEDDING DAY**  
**DSW**  
**ETHAN ALLEN**  
**COSTCO WHOLESALE**  
**AVEDA**  
**ZUPAS**  
**PET SMART**  
**PIZZA KARMA**  
**Marshall's**  
**OfficeMax**

**The Shoppes at Arbor Lakes**  
**GAP**  
**BLU**  
**Planet Fitness**  
**H&M**  
**WHOLE TRADER**  
**JOE'S**  
**ATHLETA**  
**EVEREVE**  
**WORLD MARKET**  
**EXPRESS**  
**Porcellos**  
**Rojo**  
**JARED**  
**Buckle**  
**PUTTERY**  
**BIAGGI'S**  
**LANE BRYANT**  
**WALMART**

7550 Meridian Cir N



89,475 vpd  
494

22,224 vpd

21,656 vpd

Elm Creek Blvd

37,657 vpd

123,940 vpd

694

169

169