

FOR LEASE > OFFICE SPACE

Murray Office

5444 SOUTH GREEN STREET MURRAY, UTAH



11,150 RSF

\$19.50/SF, Full Service



Property Information

- > Turnkey office / call center space
- > Available: approximately 11,150 RSF
- > Sublease term: 3 years remain; direct lease also available
- > Additional tenant improvements: available and negotiable
- > Rental rate: \$19.50/SF full service
- > Layout: 50/50 with 18-20 private offices
- > Includes: open area for workstations, private rest-rooms, and large break-room
- > Parking: abundant, in both east and west lots
- > Signage: monument and freeway visible
- > Electronic pole sign
- > I-15 visible signage and identity
- > Direct access from 5400 South freeway exit
- > Central Salt Lake Valley location

Peter Gordon
+1 801 947 8333
peter.gordon@colliers.com

Ben Richardson
+1 801 746 4733
brichardson@ngacres.com



Colliers International
6550 S Millrock Dr. | Suite 200
Salt Lake City, UT 84121
P: +1 801 947 8300

FOR LEASE > OFFICE SPACE

Murray Office

5444 SOUTH GREEN STREET MURRAY, UTAH

Visible Signage Available
Along I-15 Freeway



Peter Gordon
+1 801 947 8333
peter.gordon@colliers.com

Ben Richardson
+1 801 746 4733
brichardson@ngacres.com



Colliers International
6550 S Millrock Dr | Suite 200
Salt Lake City, UT 84121
P: +1 801 947 8300



FOR LEASE > OFFICE SPACE

Murray Office

5444 SOUTH GREEN STREET MURRAY, UTAH



Gallery

Clockwise from top left:

Reception Area // Large Open
Area // Conference Room //
Executive Office Area

VIEW MORE PHOTOS 

colliers.com/en



Peter Gordon
+1 801 947 8333
peter.gordon@colliers.com

Ben Richardson
+1 801 746 4733
brichardson@ngacres.com



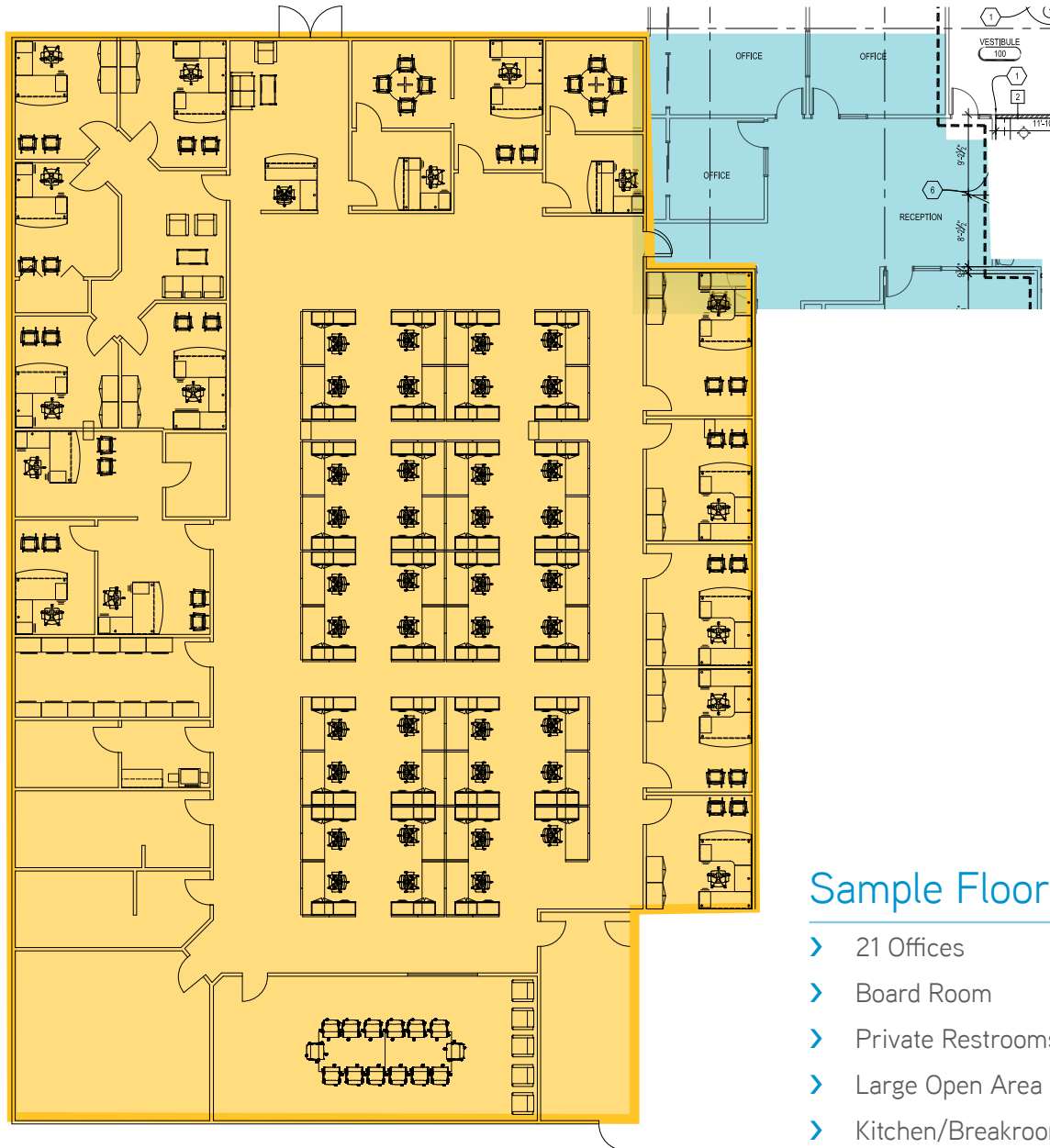
Colliers International
6550 S Millrock Dr | Suite 200
Salt Lake City, UT 84121
P: +1 801 947 8300



FOR LEASE > OFFICE SPACE

Murray Office

5444 SOUTH GREEN STREET MURRAY, UTAH



Sample Floor Plan

- > 21 Offices
- > Board Room
- > Private Restrooms
- > Large Open Area
- > Kitchen/Breakroom
- > Mail/Copy Room

Sample Layout Courtesy of:
Inside Out Office Interiors

Parking Lot

Peter Gordon
+1 801 947 8333
peter.gordon@colliers.com

Ben Richardson
+1 801 746 4733
brichardson@ngacres.com



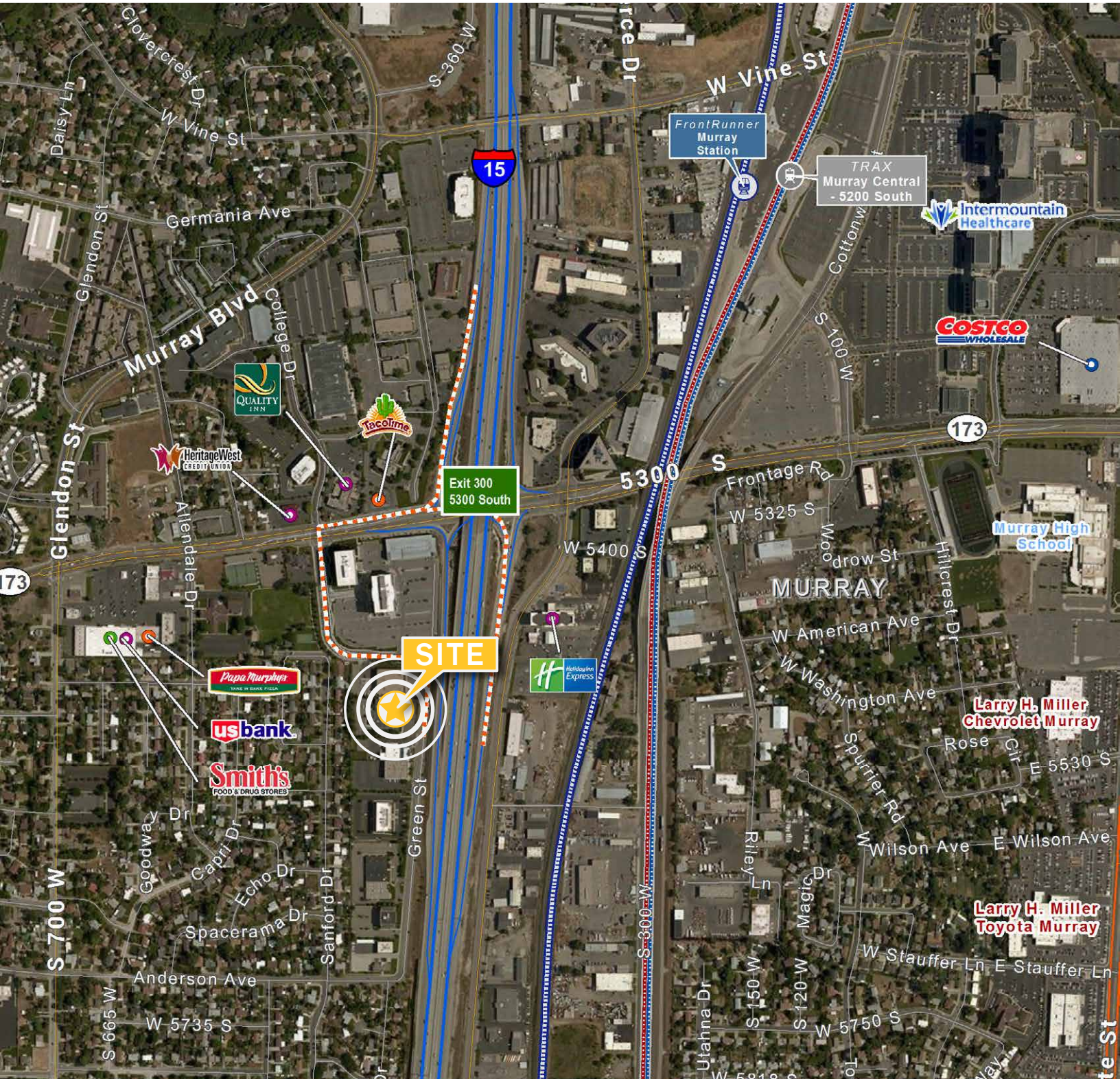
Colliers International
6550 S Millrock Dr | Suite 200
Salt Lake City, UT 84121
P: +1 801 947 8300



FOR LEASE > OFFICE SPACE

Murray Office

5444 SOUTH GREEN STREET MURRAY, UTAH



Peter Gordon
+1 801 947 8333
peter.gordon@colliers.com

Ben Richardson
+1 801 746 4733
brichardson@ngacres.com

Newmark Grubb
ACRES

Colliers International
6550 S Millrock Dr | Suite 200
Salt Lake City, UT 84121
P: +1 801 947 8300

