

**NEW RETAIL / OFFICE SPACE AVAILABLE** IN WESTERN OLATHE

# Join Fry Orthodontics, Insight Vision & Hokulia Shave Ice

SWC OF COLLEGE BOULEVARD & LONE ELM ROAD, OLATHE, KANSAS



## Property Features

- › Brand new, multi-tenant building on the southwest corner of College Boulevard and Lone Elm Road in Olathe, Kansas
- › Delivery will be 1st quarter 2018
- › 3,400 SF space available
- › Located across the street from Olathe Northwest High School in a high residential growth area

**MARK ARENSBERG**  
+1 816 556 1107  
KANSAS CITY, MO  
mark.arensberg@colliers.com

**COLLIERS INTERNATIONAL**  
4520 Main Street, Suite 1000  
Kansas City, MO 64111  
www.colliers.com



RETAIL SPACE FOR LEASE

# Join Fry Orthodontics

SWC OF COLLEGE BOULEVARD & LONE ELM ROAD, OLATHE, KANSAS

## SITE PLAN



MARK ARENSBERG  
+1 816 556 1107  
KANSAS CITY, MO  
mark.arenberg@colliers.com

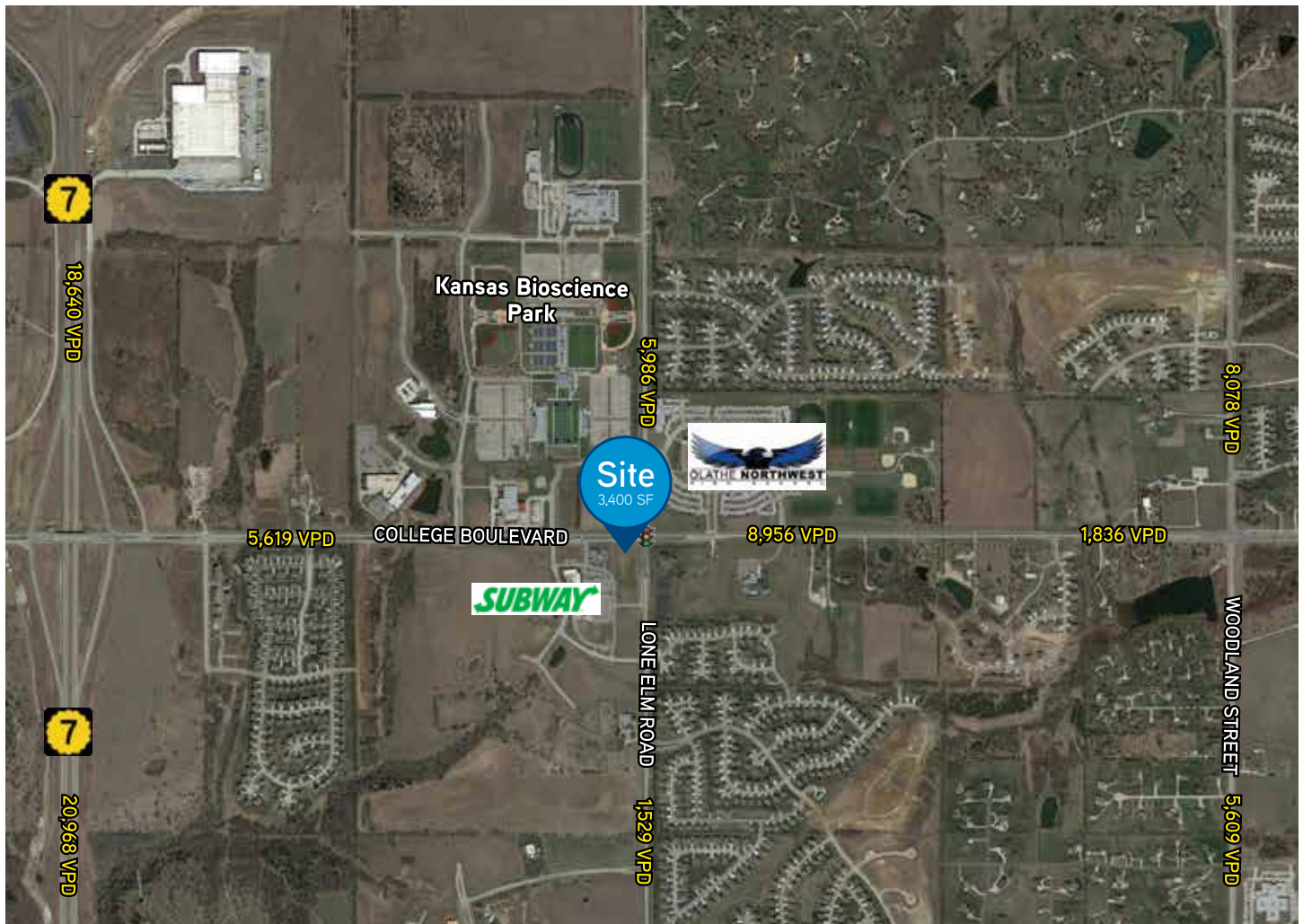
COLLIERS INTERNATIONAL  
4520 Main Street, Suite 1000  
Kansas City, MO 64111  
www.colliers.com

RETAIL SPACE FOR LEASE

# Join Fry Orthodontics

SWC OF COLLEGE BOULEVARD & LONE ELM ROAD, OLATHE, KANSAS

## AERIAL



# West Olathe Submarket Growth



## SUBMARKET GROWTH

This development is positioned at the front of an expanding suburb which has, and will continue to provide for, tremendous growth in population and household income to the immediate area. The Olathe School District is building a new, \$77 million, 375,000-square-foot high school one mile to the west of Santa Fe Street & K-7. Along with the new high school, several large single-family subdivisions are currently being built with homes ranging in value from \$250,000 to \$650,000. The city will also spend over \$14 million on a major lake renovation for Lake Olathe. The renovation will include a marina and beach for public access.