

Land For Sale

Olive St

N 24th St

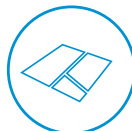
Olive & 24th Street, Rogers | AR

Up to 5.18 +/- acres for sale located in the city center of Rogers. Minutes away from several large retailers, shopping centers, and Historic Downtown Rogers. Property backs up to the Razorback Greenway and Northwest Arkansas Community College is a 7 minute drive. Great opportunity for corner retail or multi-family development.



#	Acres	Price/SF	Total
1	1.00	\$6.87	\$299,500
2	4.18	\$1.81	\$329,900

FEATURES



+/- 5.18 acres



Zoned Commercial



W Olive Street Traffic Count
15,000 VPD (2016)



Direct access to Razorback
Greenway Trail

Contact us:

Alan W. Cole

Principal | Arkansas

+1 479 845 1505

alan.cole@colliers.com

Darryl Napolitano

Brokerage & Development |

Arkansas

+1 479 845 1520

darryl.napolitano@colliers.com



Colliers International

4204 S. Pinnacle Hills Pkwy | Suite 102

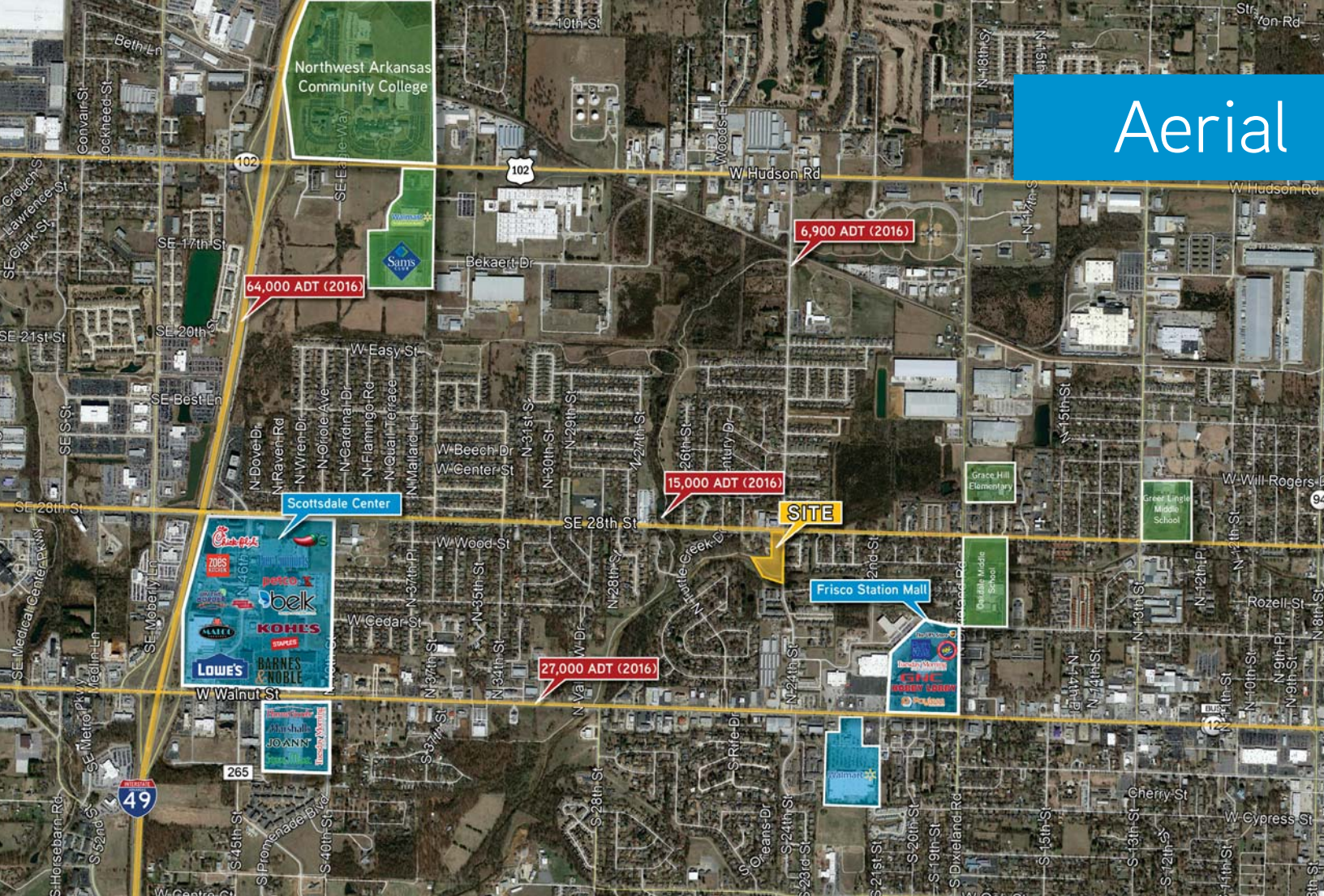
Rogers, AR 72758

P: +1 479 845 6000






www.colliers.com/arkansas

This document has been prepared by Colliers International for advertising and general information only. Colliers International makes no guarantees, representations or warranties of any kind, expressed or implied, regarding the information including, but not limited to, warranties of content, accuracy and reliability. Any interested party should undertake their own inquiries as to the accuracy of the information. Colliers International excludes unequivocally all inferred or implied terms, conditions and warranties arising out of this document and excludes all liability for loss and damages arising there from. This publication is the copyrighted property of Colliers International and/or its licensor(s). ©2018. All rights reserved.

Aerial



Area Demographics

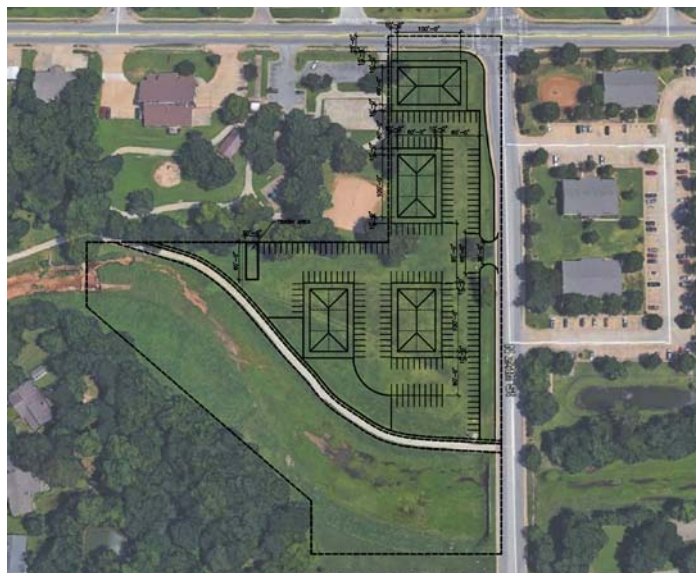
	1 Mile	3 Mile	5 Mile
 Population (2017)	10,703	51,935	97,525
 Projected Population (2022)	11,709	56,552	108,439
 Average Household Income (2017)	\$56,710	\$67,108	\$78,457
 Proj. Average Household Income (2022)	\$61,931	\$75,224	\$88,533
 Households (2017)	4,015	19,545	35,445

Contact us:

Alan w. Cole
Principal | Arkansas
+1 479 845 1505
alan.cole@colliers.com

Darryl Napolitano
Brokerage & Development | Arkansas
+1 479 845 1520
darryl.napolitano@colliers.com

Site Plan



Colliers International
4204 S. Pinnacle Hills Pkwy | Suite 102
Rogers, AR 72758
P: +1 479 845 6000
www.colliers.com/arkansas

