



FOR SALE - PRICE REDUCED

10+/- Acres of Commercial Land Located on Prime Retail Corridor

Royersford, Pennsylvania

COLLIERS INTERNATIONAL
940 East Park Drive
Suite 204
Harrisburg, PA 17111
+1 717 730 3752

COLLIERS INTERNATIONAL
Ten Penn Center
1801 Market Street, Suite 500
Philadelphia, PA 19103
+1 215 925 4600



PROPERTY FEATURES

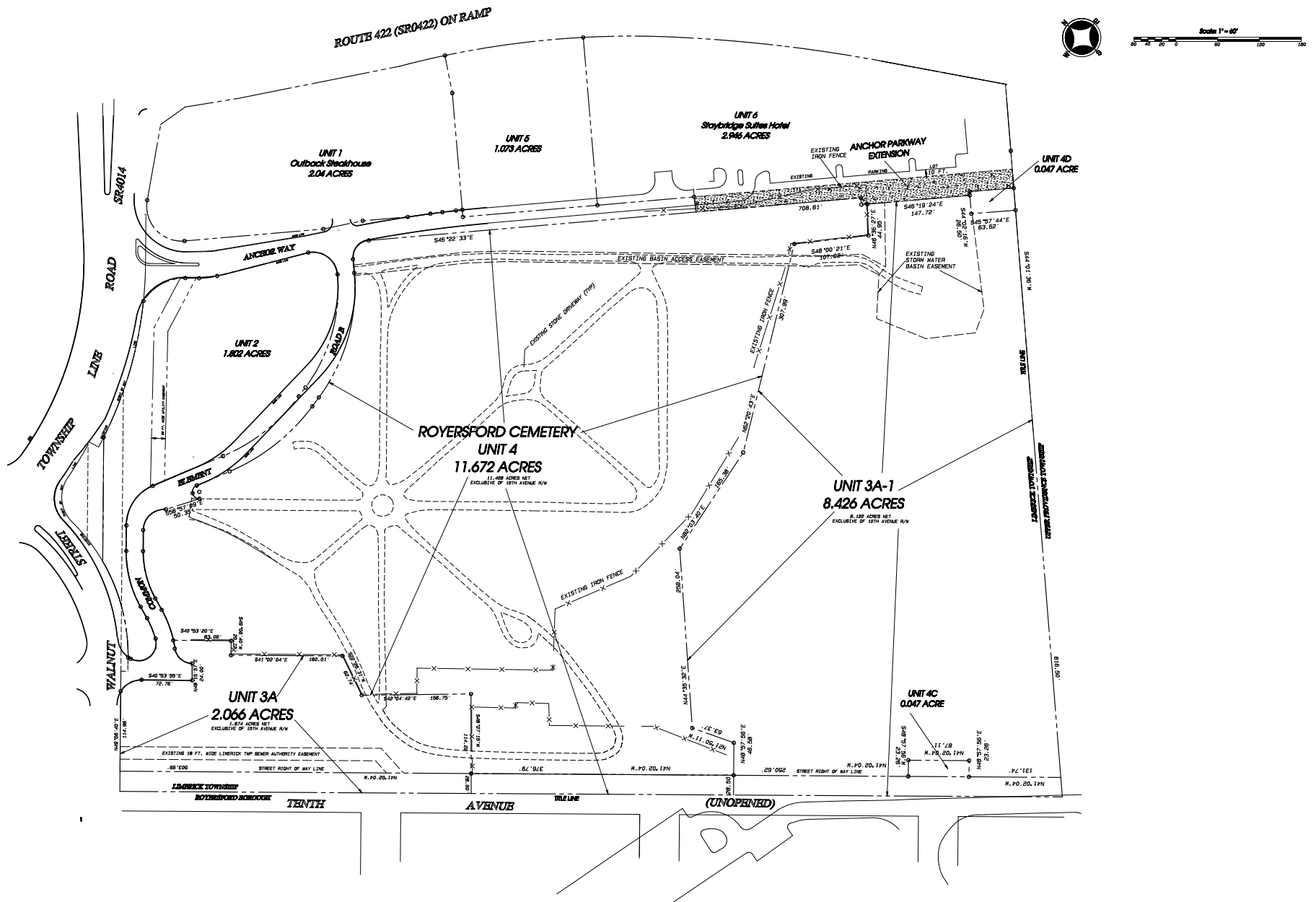
- › Two parcels of retail business zoned land on prime retail corridor
- › Located 14 miles west of King of Prussia
- › Immediate access to Route 422 (43,000 ADT)
- › Ideal uses include commercial retail and senior living
- › Unit 3A Asking Price: \$1,400,000
- › Unit 3A-1 Asking Price: \$2,250,000

SURROUNDING RETAILERS INCLUDE...



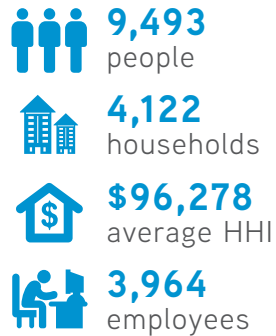
The foregoing information was furnished to us by sources which we deem to be reliable, but no warranty or representation is made as to the accuracy thereof. Subject to correction of errors, omissions, change of price, prior sale or withdrawal from market without notice. The aerial image is intended to provide a general outline of the subject property. It is not a survey nor should it be relied upon for purposes of determining property lines or boundaries.

SURVEY

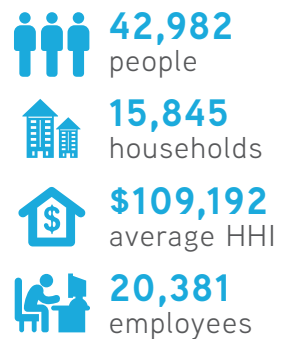


DEMOGRAPHICS

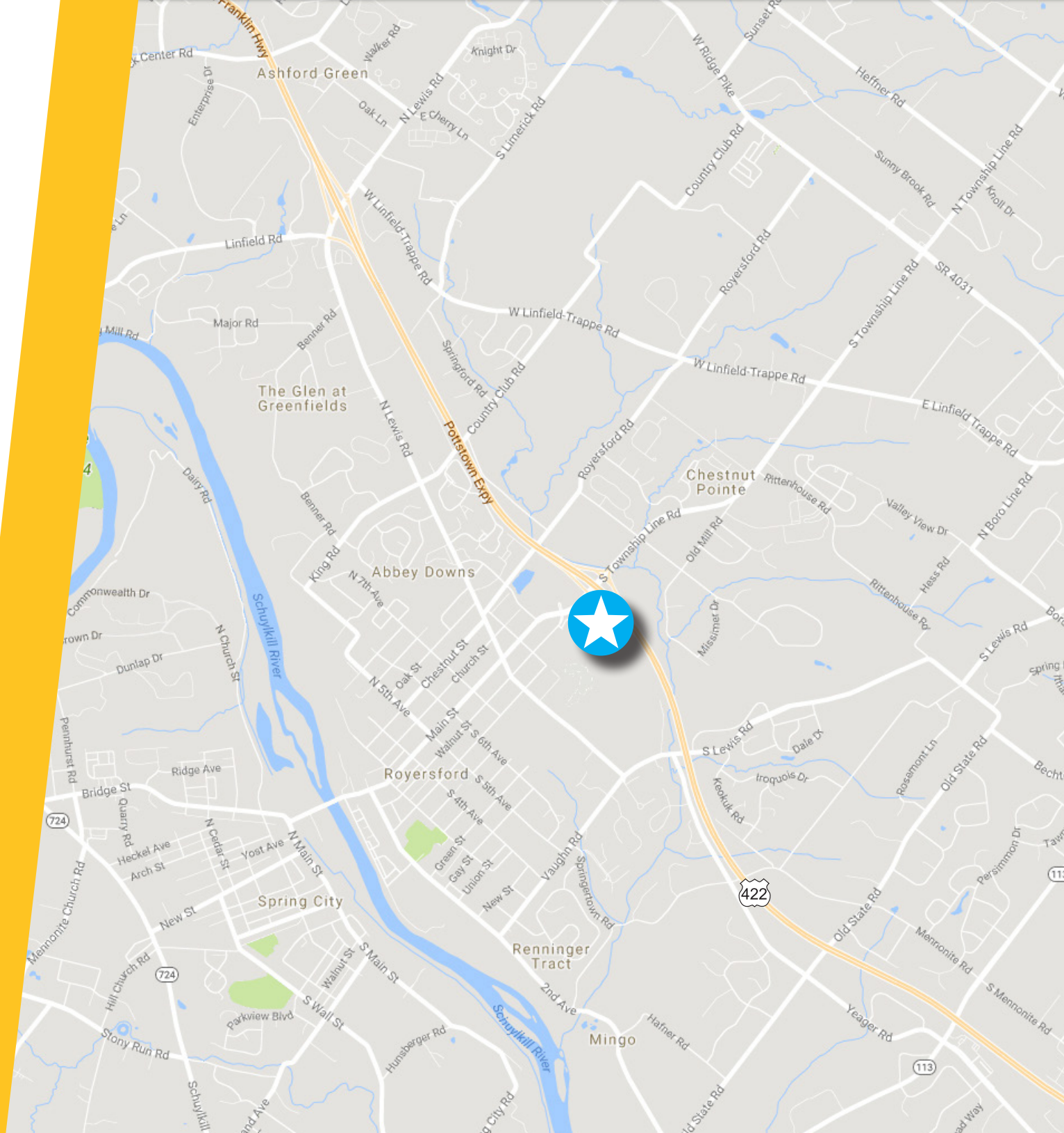
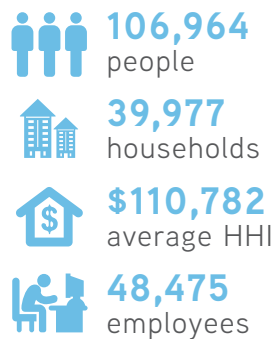
WITHIN 1 MILE



WITHIN 3 MILES



WITHIN 5 MILES





CONTACT US



ALEXIS BRIGGS
ASSOCIATE
+1 717 736 8724
alexis.briggs@colliers.com

TODD SUSSMAN
SENIOR VICE PRESIDENT
+1 215 928 7575
todd.sussman@colliers.com



@ColliersPhilly



Colliers Philly



colliers.com/philadelphia