

FOR SALE > ±36,476 SF FLEX BUILDING



Flex Building off of I-26

7618- 7620 N. WOODROW STREET IRMO, SOUTH CAROLINA 29063



Property Description

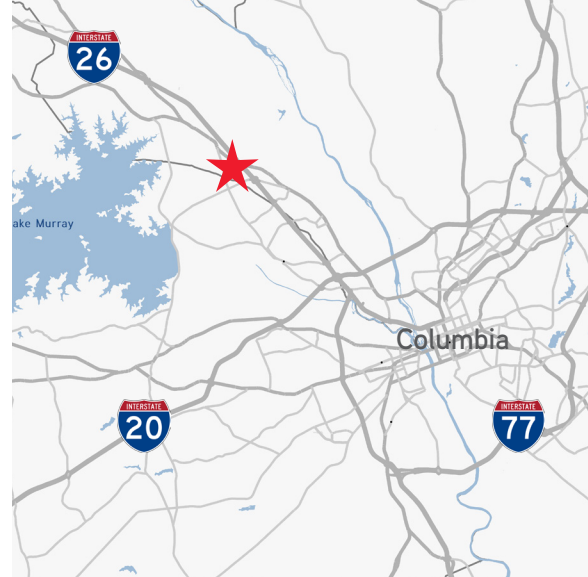
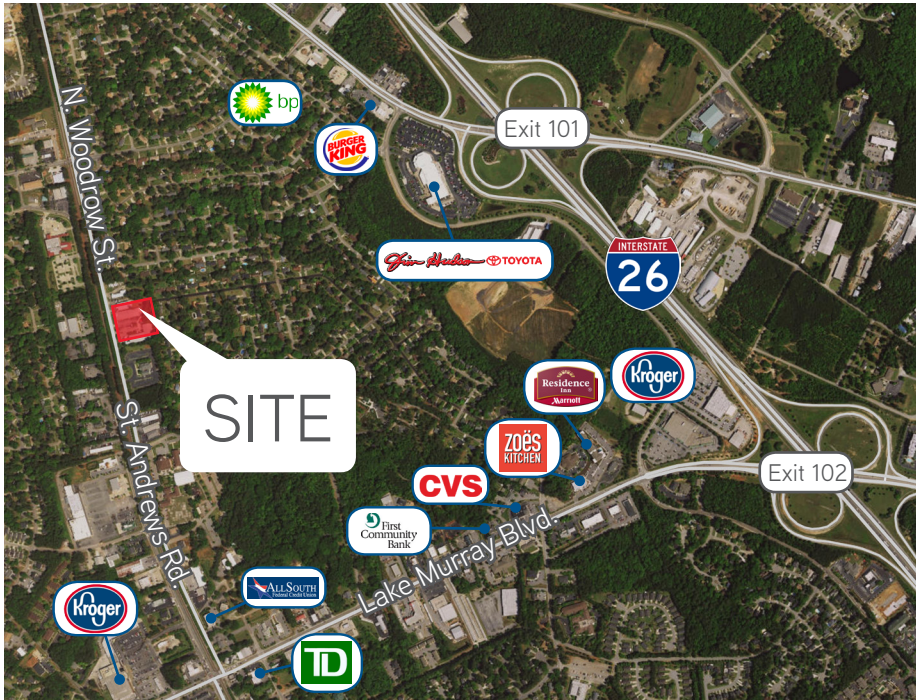
- | | | | |
|-----------------------------|------------------------------------|-------------------|------------------|
| > Buildings Size: | ±36,476 SF Total | > Electric: | 120/240 Volt |
| 7618 N. Woodrow: | 21,916 SF of warehouse | | 200 Amp |
| 7620 N. Woodrow: | 14,560 SF flex space | > Zoning: | GC |
| > Site: | ±2.26 Acres | > Ceiling Height: | 11'6" eave |
| > Building Class: | B | | 14'6" center |
| > Interstate Access: | I-26 - 1 mile | > Lighting: | Fluorescent tube |
| > Year Built: | 1985 | > Sales Price: | \$1,390,000 |
| > Construction: | Slab floor, metal clad steel frame | | |
| > Doors: | 2 Drive-in Roll Up door(s) | | |
| > Covered dock-high loading | | | |

TOMMY JOHNSON
803 401 4228 DIRECT
tommy.johnson@colliers.com

THOMAS BEARD
803 401 4247 DIRECT
thomas.beard@colliers.com

COLLIERS INTERNATIONAL
1301 Gervais Street, Suite 600
Columbia, South Carolina 29201
www.colliers.com

Floor Plan & Site Aerial



Contact Us

TOMMY JOHNSON
803 401 4228 DIRECT
tommy.johnson@colliers.com

THOMAS BEARD
803 401 4247 DIRECT
thomas.beard@colliers.com

Exterior Image



COLLIERS INTERNATIONAL
1301 Gervais Street, Suite 600
Columbia, South Carolina 29201
www.colliers.com