



FOR LEASE

Brookfield Lakes Corporate Center III

18000 W Sarah Lane
BROOKFIELD, WI

Dan Wroblewski | 414 278 6813
Matt Fahey | 414 278 6860
Brandon Ciebell | 414 982 6989

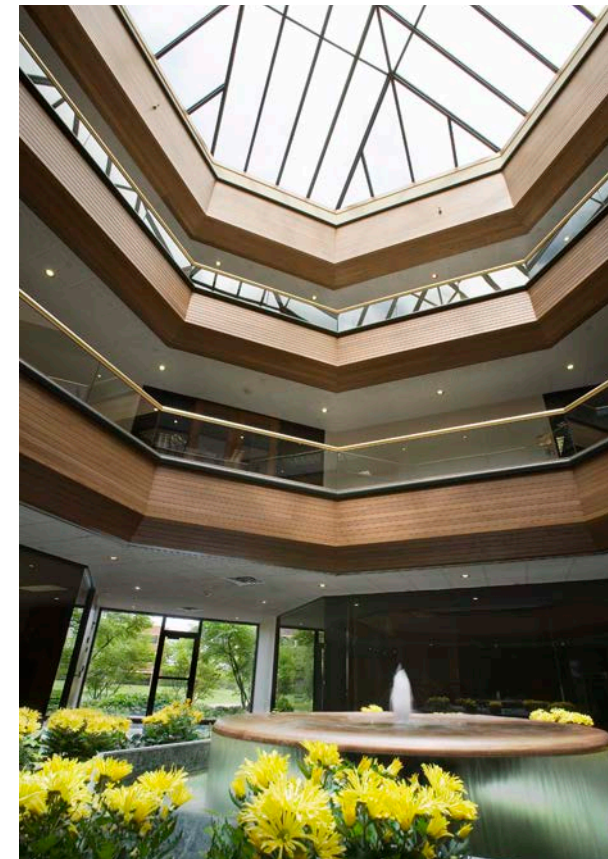


BUILDING OVERVIEW

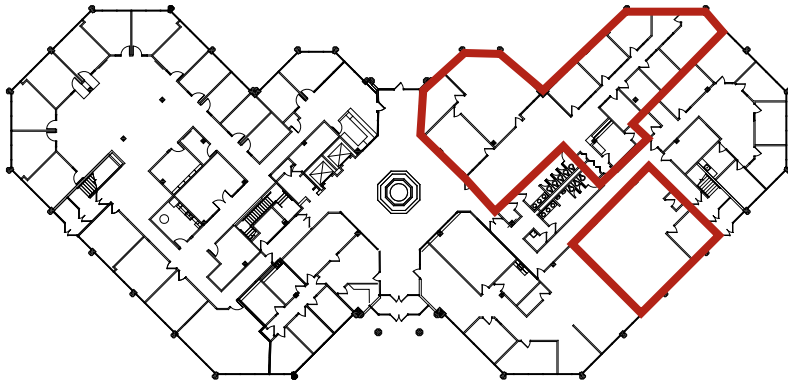
Address:	18000 W Sarah Lane Brookfield, WI
Building Size:	70,560 Sq. Ft.
Availability:	Total available: 29,842 RSF
Base Rental Rate:	\$13.75 PSF NNN
OpEx/Taxes:	\$8.75 PSF (2017 estimate)
Parking:	240 surface parking stalls (approx. 3.40/1,000 SF)

Property Highlights

- › Three-story Class “A” Office building
- › Features a fountain and skylight in marble-tiled atrium
- › Adjacent to I-94 and Bluemound Road
- › Vast amount of surrounding retail and hospitality amenities
- › Idyllic park setting with beautiful pond views
- › On-site, first-class property management & maintenance staff
- › Double Tree Hotel with restaurant, meeting rooms and fitness center with lap pool and locker room, available with tenant discount



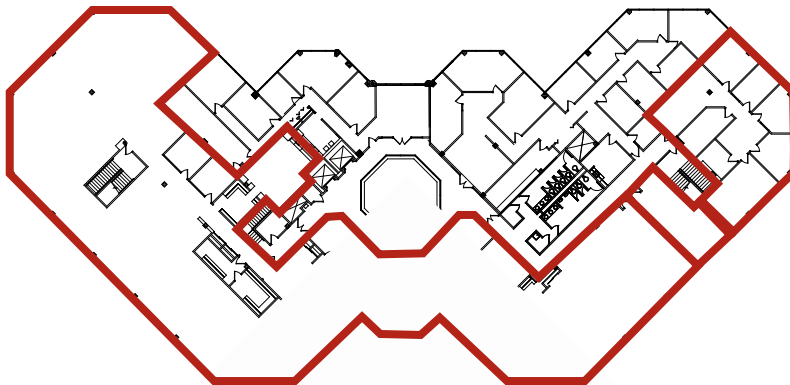
Availability



First Floor:

Suite 100 - 4,219 RSF

Suite 160 - 1,498 RSF

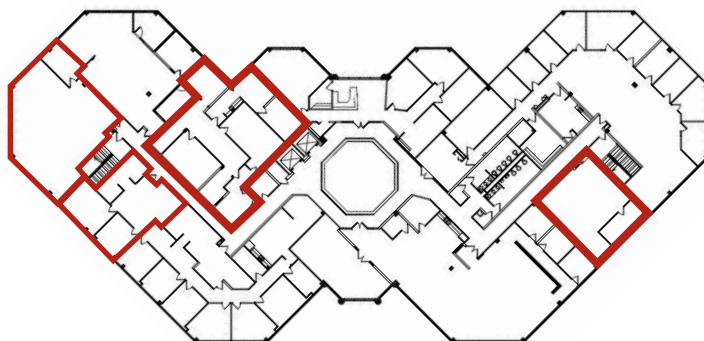


Second Floor:

Suite 200 - 2,332 RSF

Suite 220 - 580 RSF

Suite 250 - 14,616 RSF



Third Floor:

Suite 320 - 1,078 RSF

Suite 340 - 2,444 RSF

Suite 360 - 1,898 RSF

Suite 355 - 1,177 RSF

LOCATION & AMENITIES

THE CORNERS OF BROOKFIELD

FOOD

- Belair Cantina
- Cafe Hollander
- Grimaldi's
- Sendik's
- Oragne Leaf

SHOPPING

- Von Maur
- Lululemon
- Anthropologie
- Arhaus
- L.L. Bean

Brookfield Lakes

Barker Road Exit

125,000 VPD



ADDITIONAL NEARBY AMENITIES

FOOD (FAST CASUAL)

- Portillo's
- Starbucks
- Blaze Pizza
- Qdoba
- Chipotle
- Potbelly
- Jersey Mike's
- Jimmy John's
- Subway
- Noodles & Co
- Einstein's
- Stir Crazy
- Kopp's

FOOD (DINE-IN)

- Fleming's
- Buffalo Wild Wings
- TGI Fridays
- Louise's
- Original Pancake House
- Cici's Pizza
- Fujiyama
- Chili's
- Olive Garden
- Carrabba's
- Bonefish Grill
- Mama Mia's
- The Melting Pot

SHOPPING

- Metro market
- Aldi
- Fresh Thyme
- The Fresh Market
- Target
- Lowe's
- TJ Maxx
- Bed Bath & Beyond
- World Market
- Michael's
- Office Depot
- Best Buy
- Dick's Sporting Goods

SERVICES

- CVS Pharmacy
- Walgreens
- TCF Bank
- US Bank
- BMO Harris Bank
- Charles Schwab
- UPS
- Good Year
- Hot Yoga
- ATI
- 9 Round
- KinderCare
- Massage Envy

HOSPITALITY

- Double Tree
- Courtyard Marriott
- Towne Place Suites by Marriott
- Sheraton
- Embassy Suites
- Best Western
- Country Inn & Suites
- Home2 Suites by Hilton
- Hampton Inn
- Extended Stay America Hotel



Moorland Road Exit

BROOKFIELD SQUARE MALL

FOOD

- Bravo!
- Cooper's Hawk
- Red Robin
- Five Guys
- Mitchell's Fish Market
- Jason's Deli

SHOPPING

- Sears
- Boston Store
- JC Penney
- Barnes & Noble
- The Limited
- The North Face

BROOKFIELD LAKES CORPORATE CENTER

- DoubleTree Hotel with restaurant & meeting rooms
- KinderCare Day Care Center
- Chili's Restaurant
- FedEx Office - 24 hrs
- Walking Trails
- Adjacent to I-94 & Bluemound Road
- On-Site Property Management & Leasing Company



DAN WROBLEWSKI

414 278 6813

dan.wroblewski@colliers.com

MATT FAHEY

414 278 6860

matt.fahey@colliers.com

BRANDON CIEBELL

414 982 6989

brandon.ciebell@colliers.com

COLLIERS INTERNATIONAL | 833 E. Michigan Street, Suite 500 | Milwaukee, WI 53202 | 414 276 9500 | www.colliers.com

This document/email has been prepared by Colliers International for advertising and general information only. Colliers International makes no guarantees, representations or warranties of any kind, expressed or implied, regarding the information including, but not limited to, warranties of content, accuracy and reliability. Any interested party should undertake their own inquiries as to the accuracy of the information. Colliers International excludes unequivocally all inferred or implied terms, conditions and warranties arising out of this document and excludes all liability for loss and damages arising there from. This publication is the copyrighted property of Colliers International and /or its licensor(s). © 2016. All rights reserved. This communication is not intended to cause or induce breach of an existing listing agreement.

