



For Lease

10300 Drummmond Road Philadelphia, PA

Philadelphia Industrial Park: Build-to-Suit Office Space

- **Available Space** 12,800± SF office space
- **Location** Philadelphia Industrial Park- corporate environment
- **Accessibility** Easy access to I-95, US Route 1, and the PA Turnpike
- **Highly Visible** Corner location for easy visibility and access
- **Convenient Transportation** SEPTA bus routes 1, 20, and 50 nearby
- **Parking** Ample off-street parking
- **Flexibility** Elevator-served space in shell condition, build-to-suit

Leasing:

12,800±
square feet

Richard Gorodesky, SIOR

Senior Managing Director
+1 215 460 5857
richard.gorodesky@colliers.com

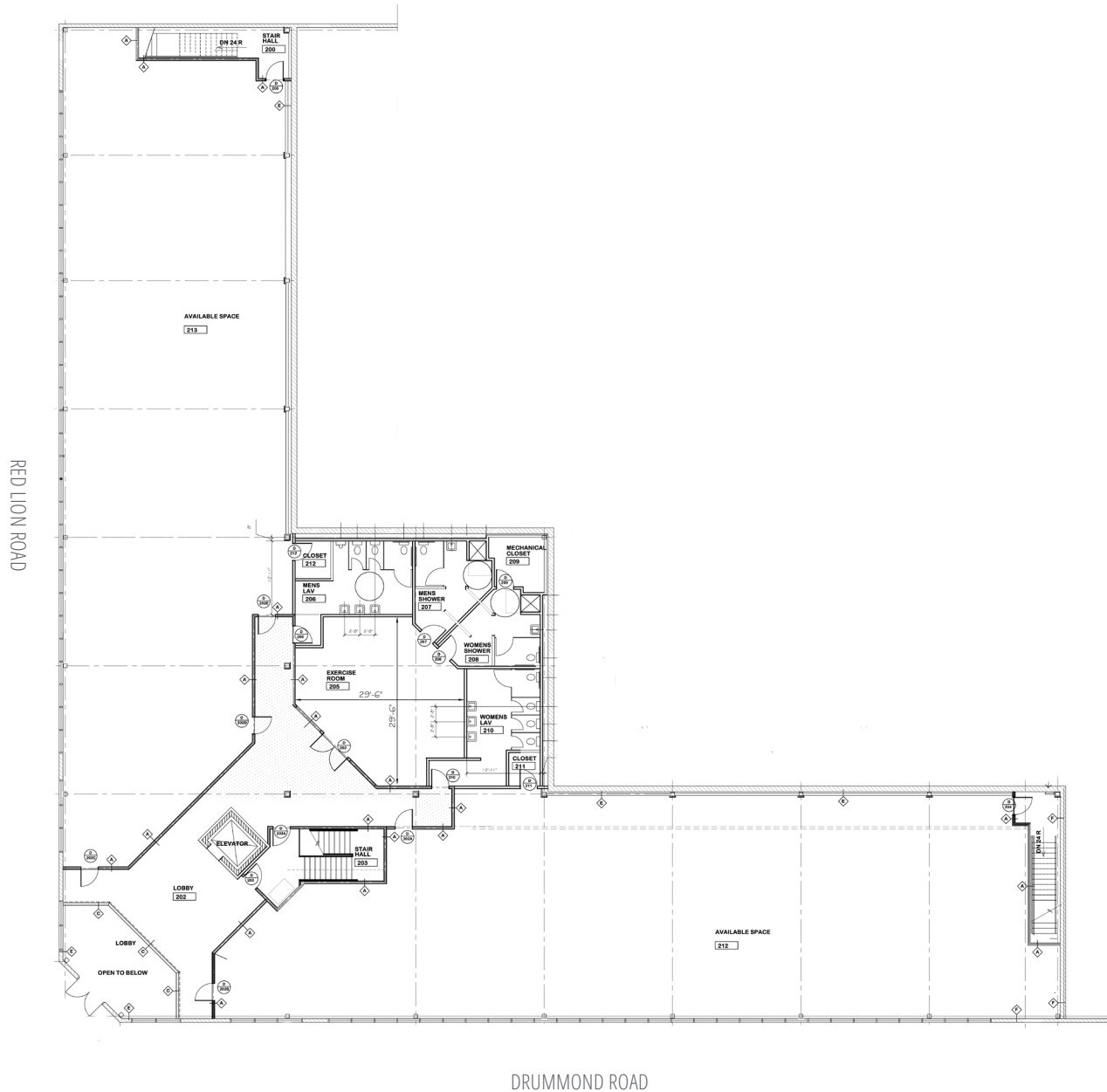
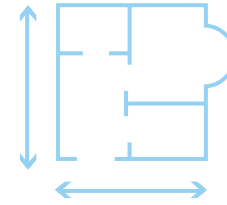
Adam Gorodesky, CCIM

Vice President
+1 215 873 1718
adam.gorodesky@colliers.com

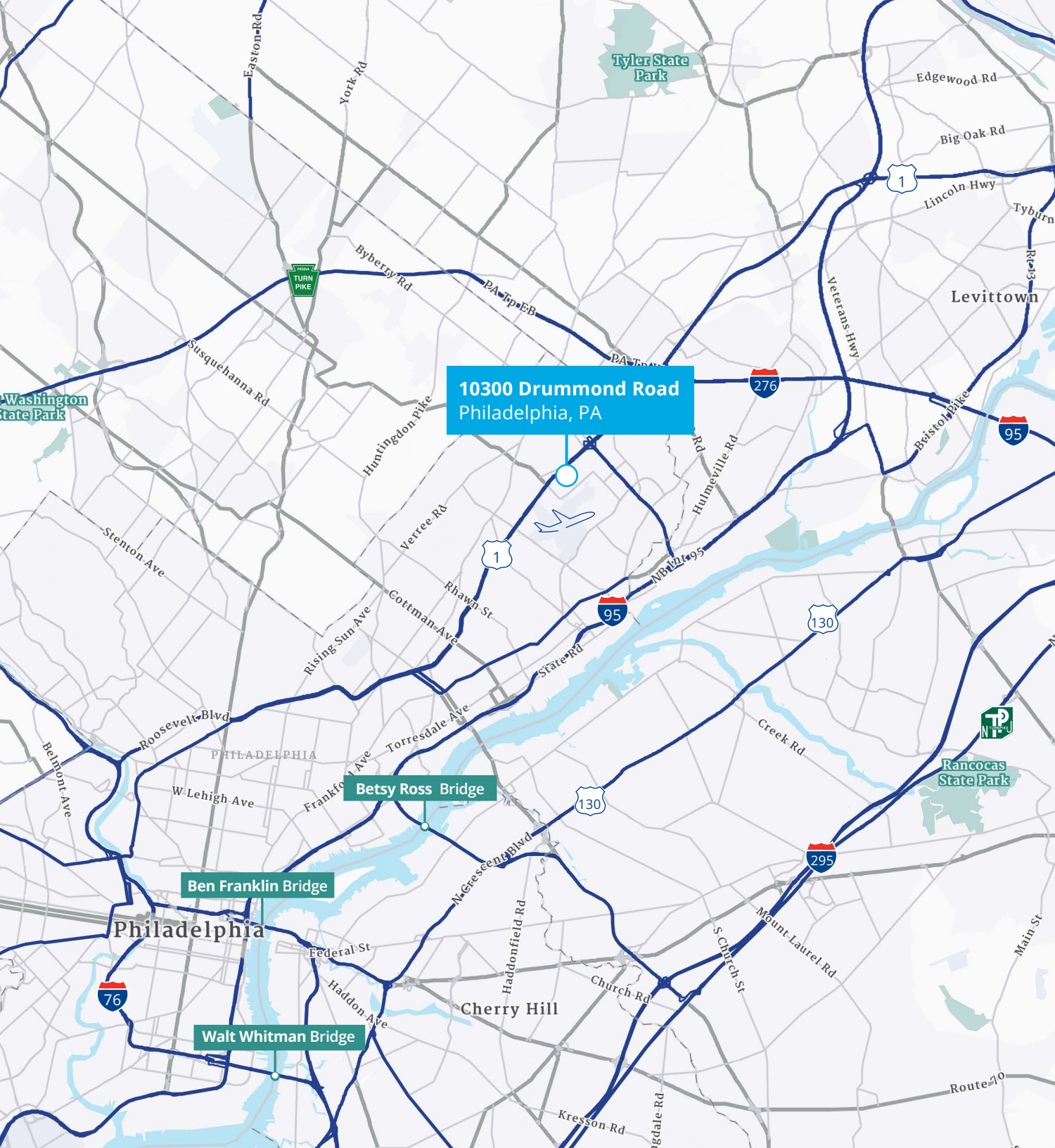
2005 Market Street, Suite 4010
Philadelphia, PA 19103
www.colliers.com/philadelphia

Colliers

Floor Plan



12,800±
square feet
available



10300 Drummond Road
Philadelphia, PA

Richard Gorodesky, SIOR

Senior Managing Director
+1 215 460 5857
richard.gorodesky@colliers.com

Adam Gorodesky, CCIM

Vice President
+1 215 873 1718
adam.gorodesky@colliers.com

2005 Market Street, Suite 4010
Philadelphia, PA 19103
www.colliers.com/philadelphia

