



## Highlights

- › Seven building Office/R&D/Industrial Park
- › Total project size: ±110,997 square feet
- › Wide variety of suite sizes and configurations
- › On-site deli: Eden Plaza Café
- › First exit off the San Mateo Bridge
- › 11 miles to Foster City
- › 12 miles to Oakland International Airport
- › 18 miles to San Francisco International Airport

For more information, contact:

**JOHN MCLELLAN**  
+1 650 486 2223  
john.mclellan@colliers.com  
CA License No. 01869489

**CHRIS SCHOFIELD, SIOR**  
+1 510 903 7608  
cschofield@lee-associates.com  
CA License No. 01326198

**NEW OWNERSHIP**

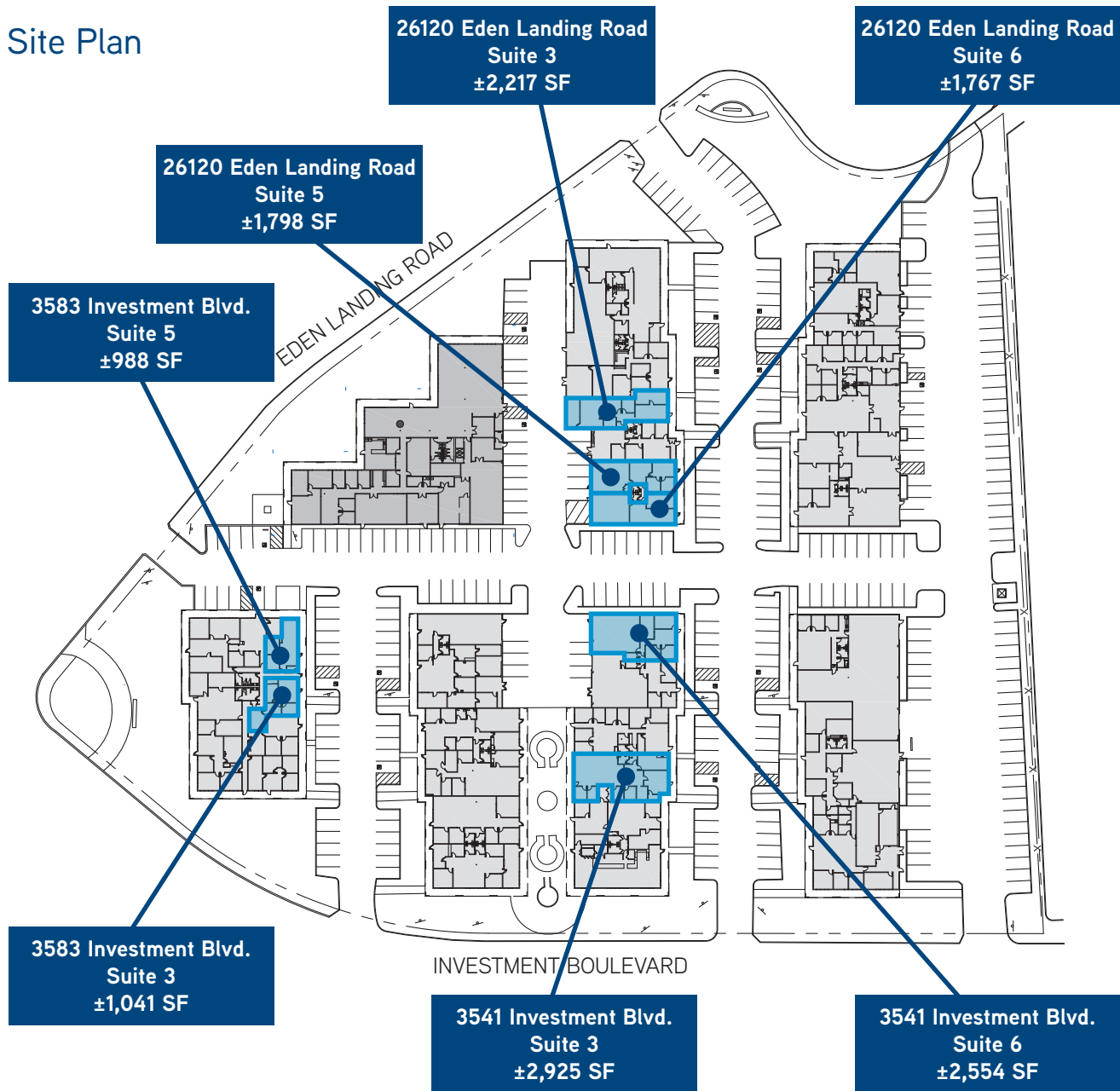




# 7 Building Office / R&D / Industrial Park

TOTAL PROJECT SIZE ±110,997 SQUARE FEET

## Site Plan



Drawings Not Exact, Not to Scale.

The information furnished has been obtained from sources we deem reliable and is submitted subject to errors, omissions and changes. Although Colliers International has no reason to doubt its accuracy, we do not guarantee it. All information should be verified by the recipient prior to lease, purchase, exchange, or execution of legal documents. © 2017 Colliers International



**JOHN MCLELLAN**

+1 650 486 2223

[john.mclellan@colliers.com](mailto:john.mclellan@colliers.com)

CA License No. 01869489

**CHRIS SCHOFIELD, SIOR**

+1 510 903 7608

[cschofield@lee-associates.com](mailto:cschofield@lee-associates.com)

CA License No. 01326198

**COLLIERS INTERNATIONAL**

San Francisco Peninsula

203 Redwood Shores Parkway, Suite 125

Redwood City, CA 94065

Main: +1 650 486 2200

[colliers.com/redwoodcity](http://colliers.com/redwoodcity)



# 7 Building Office / R&D / Industrial Park

TOTAL PROJECT SIZE ±110,997 SQUARE FEET

## Property Aerial



**JOHN MCLELLAN**

+1 650 486 2223

[john.mclellan@colliers.com](mailto:john.mclellan@colliers.com)

CA License No. 01869489

**CHRIS SCHOFIELD, SIOR**

+1 510 903 7608

[cschofield@lee-associates.com](mailto:cschofield@lee-associates.com)

CA License No. 01326198

**COLLIERS INTERNATIONAL**

San Francisco Peninsula

203 Redwood Shores Parkway, Suite 125

Redwood City, CA 94065

Main: +1 650 486 2200

[colliers.com/redwoodcity](http://colliers.com/redwoodcity)

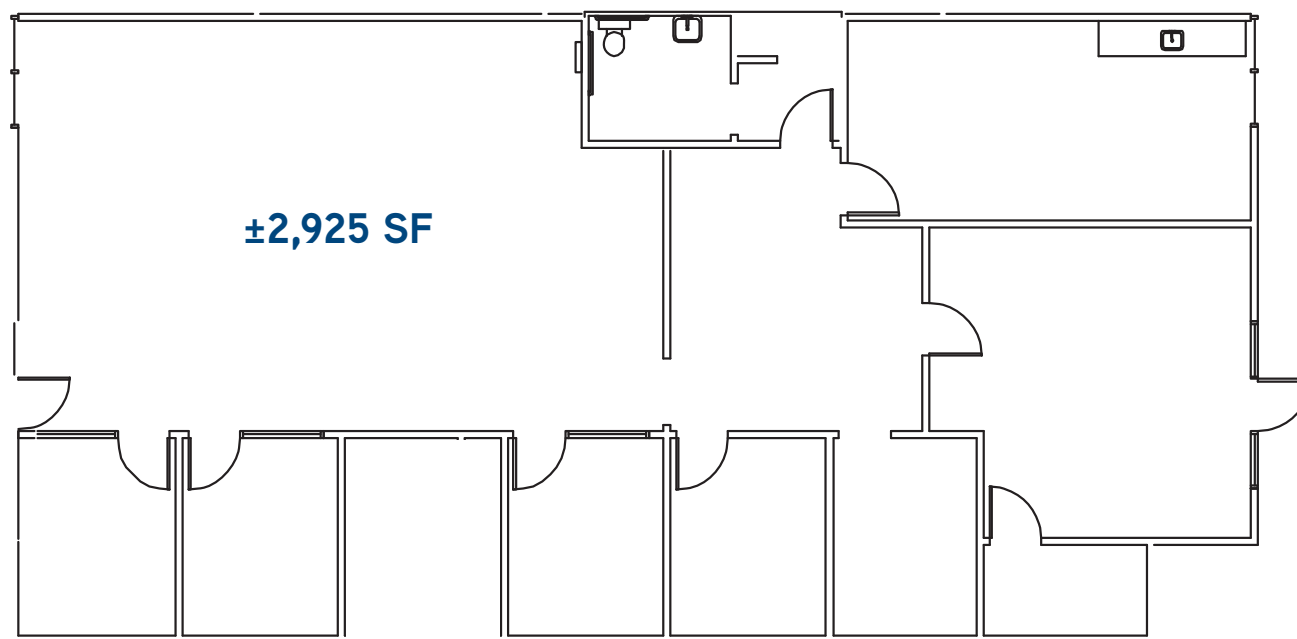
26102, 26120 and 26142 Eden Landing Road | 3521, 3541, 3563 and 3583 Investment Boulevard



# 7 Building Office / R&D / Industrial Park

TOTAL PROJECT SIZE ±110,997 SQUARE FEET

Floor Plan > 3541 Investment Boulevard, Suite 3



Drawings Not Exact, Not to Scale.

The information furnished has been obtained from sources we deem reliable and is submitted subject to errors, omissions and changes. Although Colliers International has no reason to doubt its accuracy, we do not guarantee it. All information should be verified by the recipient prior to lease, purchase, exchange, or execution of legal documents. © 2017 Colliers International



**JOHN MCLELLAN**

+1 650 486 2223

[john.mclellan@colliers.com](mailto:john.mclellan@colliers.com)

CA License No. 01869489

**CHRIS SCHOFIELD, SIOR**

+1 510 903 7608

[cschofield@lee-associates.com](mailto:cschofield@lee-associates.com)

CA License No. 01326198

**COLLIERS INTERNATIONAL**

San Francisco Peninsula

203 Redwood Shores Parkway, Suite 125

Redwood City, CA 94065

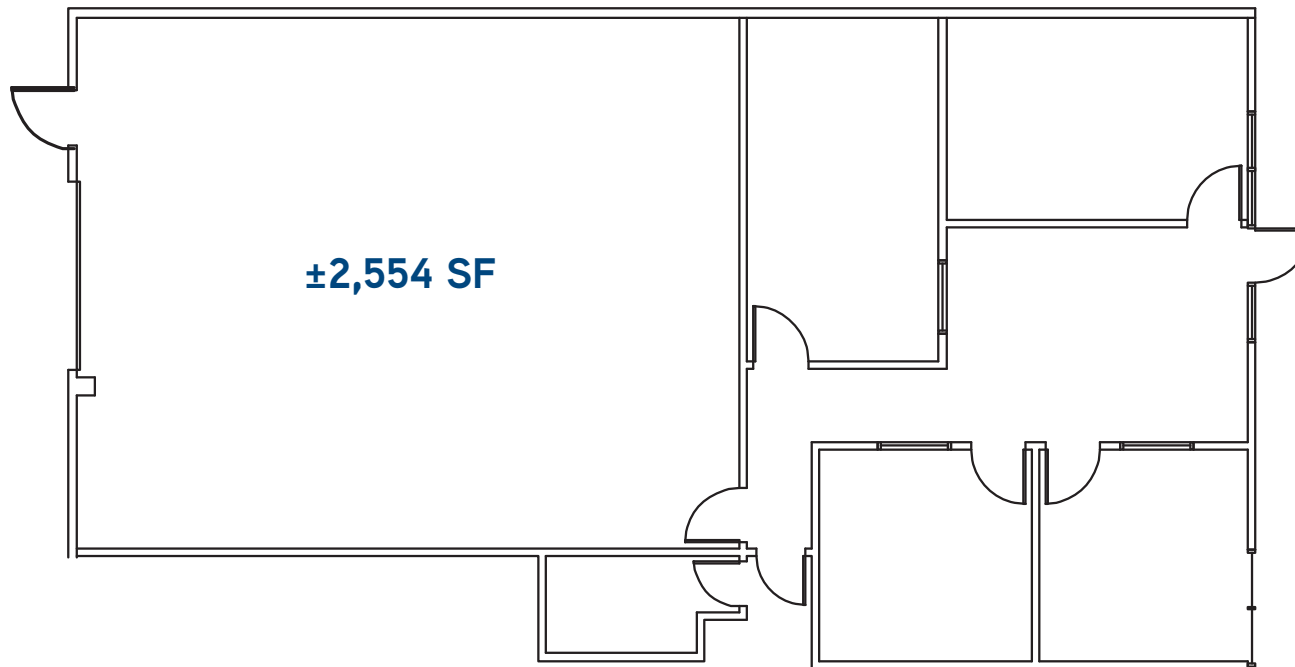
Main: +1 650 486 2200

[colliers.com/redwoodcity](http://colliers.com/redwoodcity)

# 7 Building Office / R&D / Industrial Park

TOTAL PROJECT SIZE ±110,997 SQUARE FEET

Floor Plan > 3541 Investment Boulevard, Suite 6



Drawings Not Exact, Not to Scale.

The information furnished has been obtained from sources we deem reliable and is submitted subject to errors, omissions and changes. Although Colliers International has no reason to doubt its accuracy, we do not guarantee it. All information should be verified by the recipient prior to lease, purchase, exchange, or execution of legal documents. © 2017 Colliers International



**JOHN MCLELLAN**

+1 650 486 2223

[john.mclellan@colliers.com](mailto:john.mclellan@colliers.com)

CA License No. 01869489

**CHRIS SCHOFIELD, SIOR**

+1 510 903 7608

[cschofield@lee-associates.com](mailto:cschofield@lee-associates.com)

CA License No. 01326198

**COLLIERS INTERNATIONAL**

San Francisco Peninsula

203 Redwood Shores Parkway, Suite 125

Redwood City, CA 94065

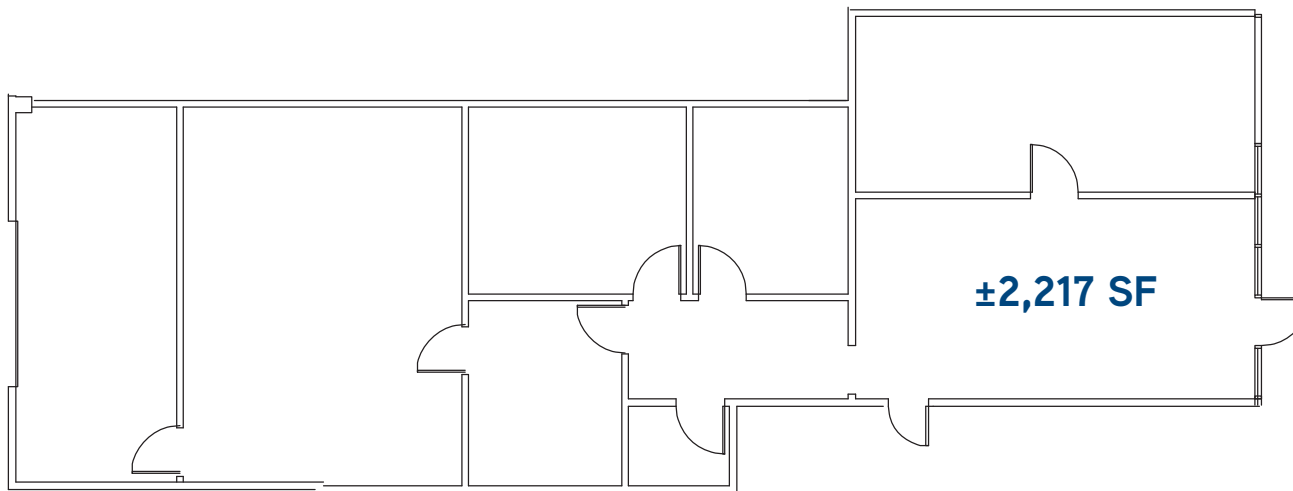
Main: +1 650 486 2200

[colliers.com/redwoodcity](http://colliers.com/redwoodcity)

## 7 Building Office / R&D / Industrial Park

TOTAL PROJECT SIZE ±110,997 SQUARE FEET

Floor Plan > 26120 Eden Landing Road, Suite 3



Drawings Not Exact, Not to Scale.

The information furnished has been obtained from sources we deem reliable and is submitted subject to errors, omissions and changes. Although Colliers International has no reason to doubt its accuracy, we do not guarantee it. All information should be verified by the recipient prior to lease, purchase, exchange, or execution of legal documents. © 2017 Colliers International



**JOHN MCLELLAN**

+1 650 486 2223

[john.mclellan@colliers.com](mailto:john.mclellan@colliers.com)

CA License No. 01869489

**CHRIS SCHOFIELD, SIOR**

+1 510 903 7608

[cschofield@lee-associates.com](mailto:cschofield@lee-associates.com)

CA License No. 01326198

**COLLIERS INTERNATIONAL**

San Francisco Peninsula

203 Redwood Shores Parkway, Suite 125

Redwood City, CA 94065

Main: +1 650 486 2200

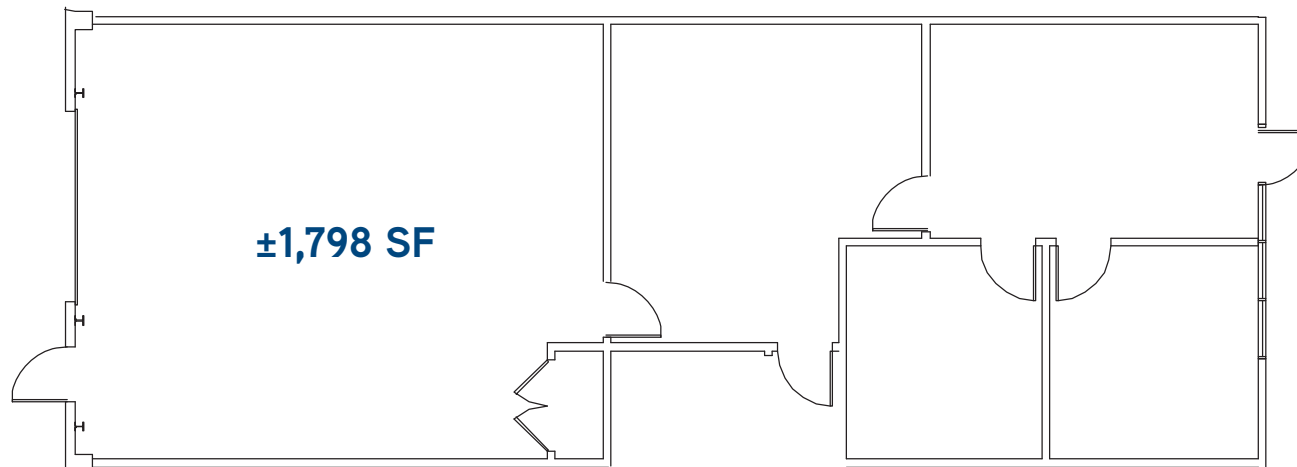
[colliers.com/redwoodcity](http://colliers.com/redwoodcity)



## 7 Building Office / R&D / Industrial Park

TOTAL PROJECT SIZE ±110,997 SQUARE FEET

Floor Plan > 26120 Eden Landing Road, Suite 5



Drawings Not Exact, Not to Scale.

The information furnished has been obtained from sources we deem reliable and is submitted subject to errors, omissions and changes. Although Colliers International has no reason to doubt its accuracy, we do not guarantee it. All information should be verified by the recipient prior to lease, purchase, exchange, or execution of legal documents. © 2017 Colliers International



**JOHN MCLELLAN**

+1 650 486 2223

[john.mclellan@colliers.com](mailto:john.mclellan@colliers.com)

CA License No. 01869489

**CHRIS SCHOFIELD, SIOR**

+1 510 903 7608

[cschofield@lee-associates.com](mailto:cschofield@lee-associates.com)

CA License No. 01326198

**COLLIERS INTERNATIONAL**

San Francisco Peninsula

203 Redwood Shores Parkway, Suite 125

Redwood City, CA 94065

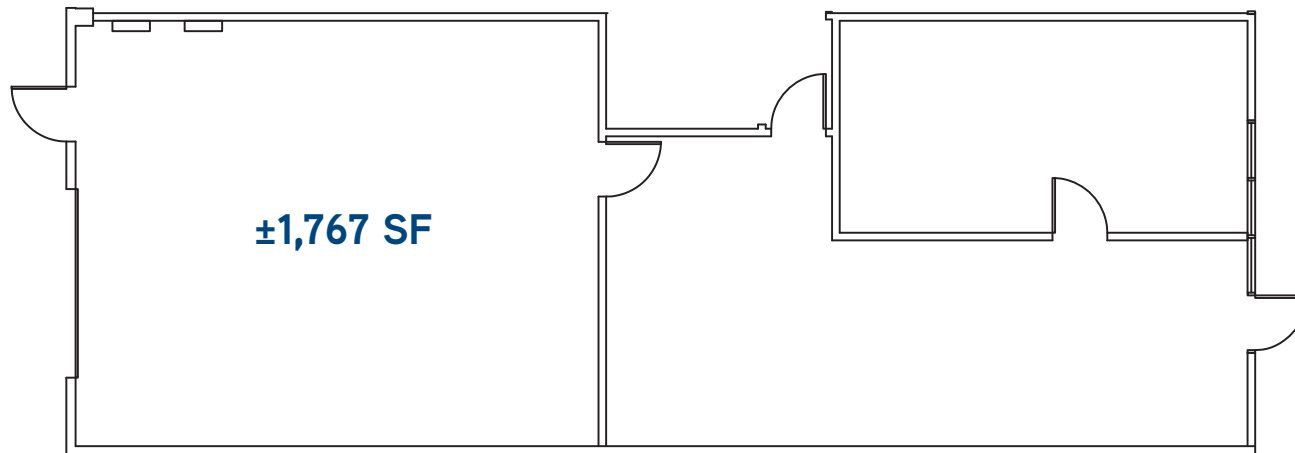
Main: +1 650 486 2200

[colliers.com/redwoodcity](http://colliers.com/redwoodcity)

# 7 Building Office / R&D / Industrial Park

TOTAL PROJECT SIZE ±110,997 SQUARE FEET

Floor Plan > 26120 Eden Landing Road, Suite 6



Drawings Not Exact, Not to Scale.

The information furnished has been obtained from sources we deem reliable and is submitted subject to errors, omissions and changes. Although Colliers International has no reason to doubt its accuracy, we do not guarantee it. All information should be verified by the recipient prior to lease, purchase, exchange, or execution of legal documents. © 2017 Colliers International



**JOHN MCLELLAN**

+1 650 486 2223

[john.mclellan@colliers.com](mailto:john.mclellan@colliers.com)

CA License No. 01869489

**CHRIS SCHOFIELD, SIOR**

+1 510 903 7608

[cschofield@lee-associates.com](mailto:cschofield@lee-associates.com)

CA License No. 01326198

**COLLIERS INTERNATIONAL**

San Francisco Peninsula

203 Redwood Shores Parkway, Suite 125

Redwood City, CA 94065

Main: +1 650 486 2200

[colliers.com/redwoodcity](http://colliers.com/redwoodcity)

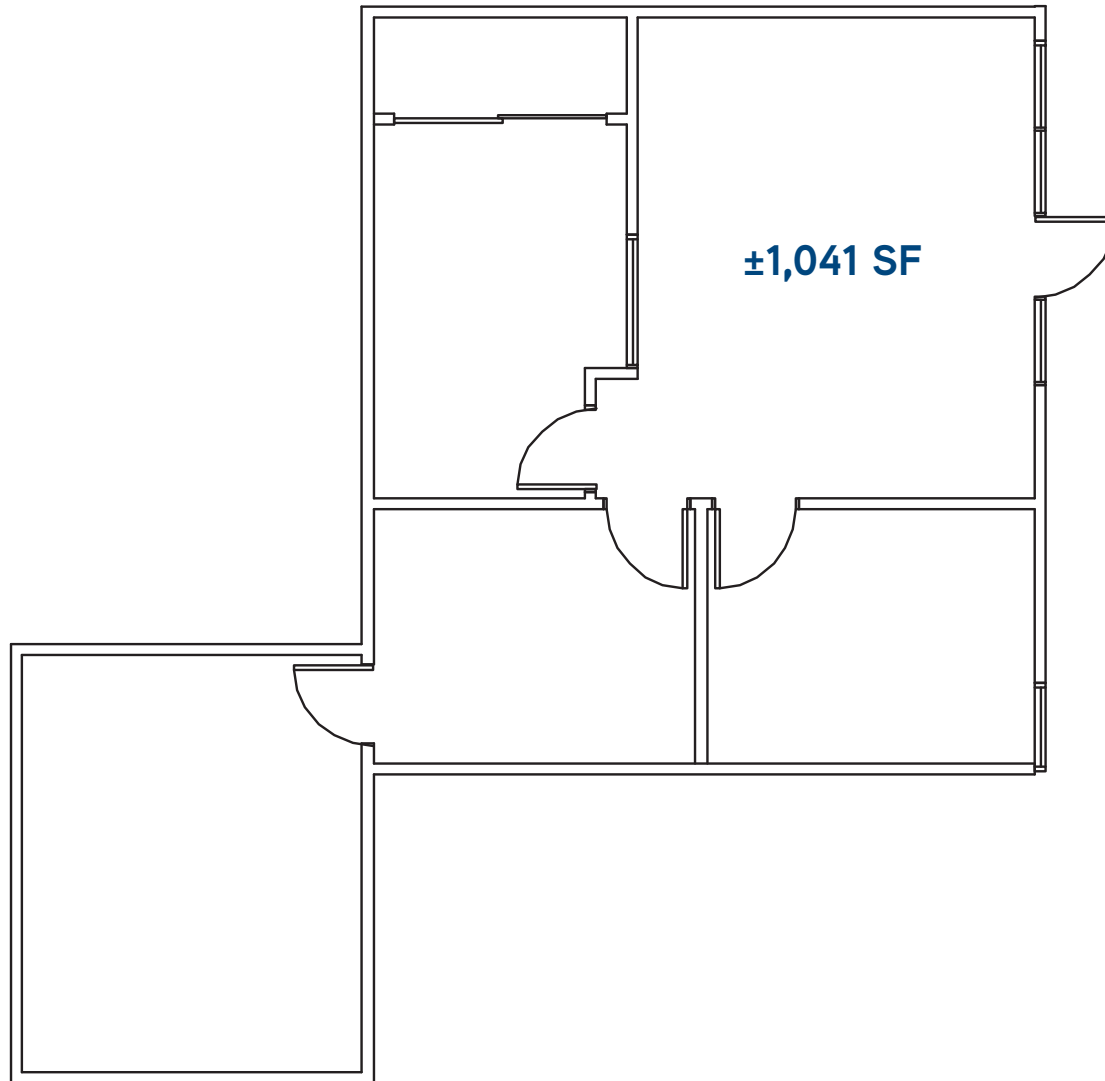


## 7 Building Office / R&D / Industrial Park

TOTAL PROJECT SIZE ±110,997 SQUARE FEET

Floor Plan > 3583 Investment Boulevard, Suite 3

\$1.75 FULL SERVICE



Drawings Not Exact, Not to Scale.

The information furnished has been obtained from sources we deem reliable and is submitted subject to errors, omissions and changes. Although Colliers International has no reason to doubt its accuracy, we do not guarantee it. All information should be verified by the recipient prior to lease, purchase, exchange, or execution of legal documents. © 2017 Colliers International



**JOHN MCLELLAN**

+1 650 486 2223

[john.mclellan@colliers.com](mailto:john.mclellan@colliers.com)

CA License No. 01869489

**CHRIS SCHOFIELD, SIOR**

+1 510 903 7608

[cschofield@lee-associates.com](mailto:cschofield@lee-associates.com)

CA License No. 01326198

**COLLIERS INTERNATIONAL**

San Francisco Peninsula

203 Redwood Shores Parkway, Suite 125

Redwood City, CA 94065

Main: +1 650 486 2200

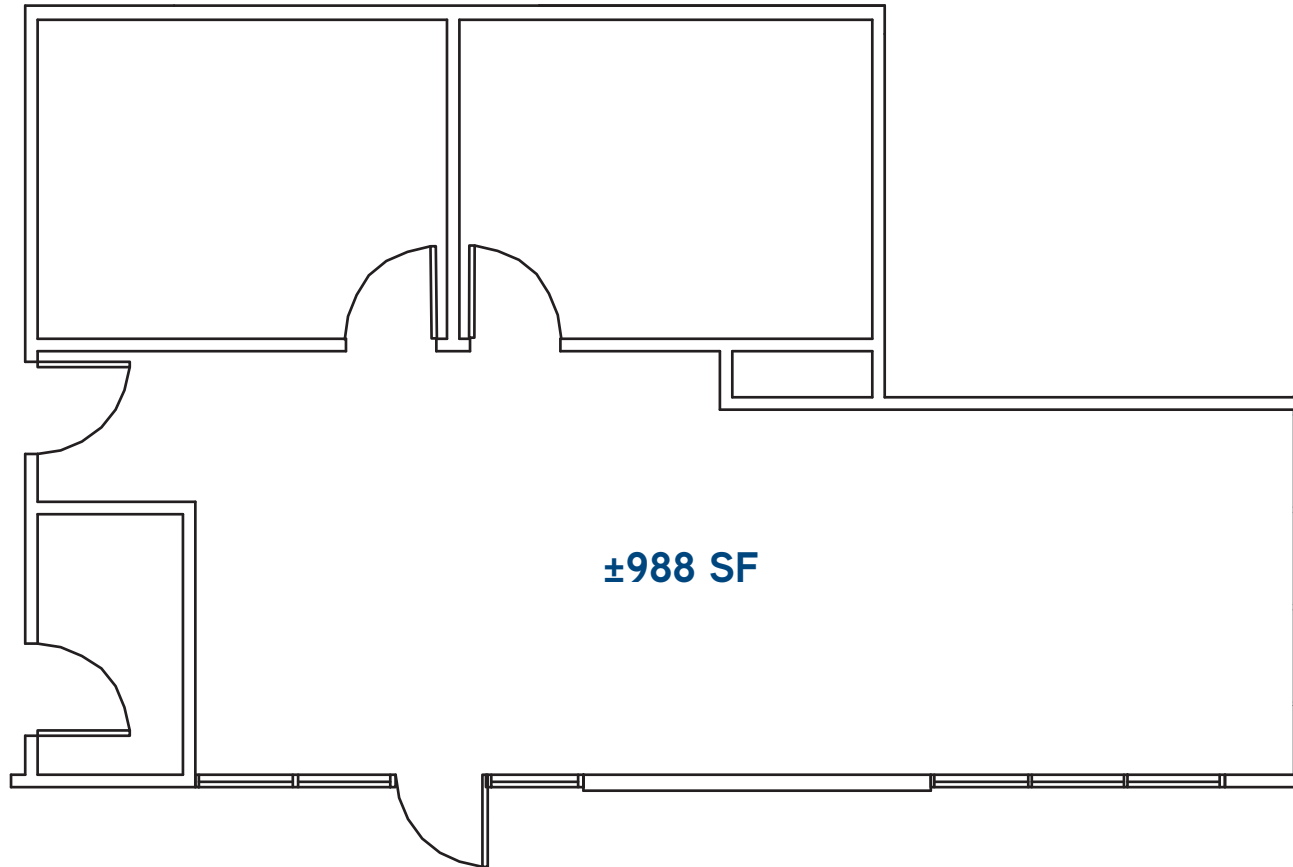
[colliers.com/redwoodcity](http://colliers.com/redwoodcity)

## 7 Building Office / R&D / Industrial Park

TOTAL PROJECT SIZE ±110,997 SQUARE FEET

Floor Plan > 3583 Investment Boulevard, Suite 5

\$1.75 FULL SERVICE



Drawings Not Exact, Not to Scale.

The information furnished has been obtained from sources we deem reliable and is submitted subject to errors, omissions and changes. Although Colliers International has no reason to doubt its accuracy, we do not guarantee it. All information should be verified by the recipient prior to lease, purchase, exchange, or execution of legal documents. © 2017 Colliers International



**JOHN MCLELLAN**

+1 650 486 2223

[john.mclellan@colliers.com](mailto:john.mclellan@colliers.com)

CA License No. 01869489

**CHRIS SCHOFIELD, SIOR**

+1 510 903 7608

[cschofield@lee-associates.com](mailto:cschofield@lee-associates.com)

CA License No. 01326198

**COLLIERS INTERNATIONAL**

San Francisco Peninsula

203 Redwood Shores Parkway, Suite 125

Redwood City, CA 94065

Main: +1 650 486 2200

[colliers.com/redwoodcity](http://colliers.com/redwoodcity)



# 7 Building Office / R&D / Industrial Park

TOTAL PROJECT SIZE ±110,997 SQUARE FEET

## Property Photographs



**JOHN MCLELLAN**

+1 650 486 2223

[john.mclellan@colliers.com](mailto:john.mclellan@colliers.com)

CA License No. 01869489

**CHRIS SCHOFIELD, SIOB**

+1 510 903 7608

[cschofield@lee-associates.com](mailto:cschofield@lee-associates.com)

CA License No. 01326198

**COLLIERS INTERNATIONAL**

San Francisco Peninsula

203 Redwood Shores Parkway, Suite 125

Redwood City, CA 94065

Main: +1 650 486 2200

[colliers.com/redwoodcity](http://colliers.com/redwoodcity)