



Coming Soon!

Industrial Space in Nampa
For Lease

Debra Drive | Nampa, ID

Steve Foster
 +1 208 472 2834
 steve.foster@colliers.com

Michael McNeight
 +1 208 472 2865
 michael.mcneight@colliers.com

Property Information

HIGHLIGHTS

- New industrial building under construction
- Close to retail amenities
- Located next to new industrial business park
- Architectural rendering shows “conceptual” building

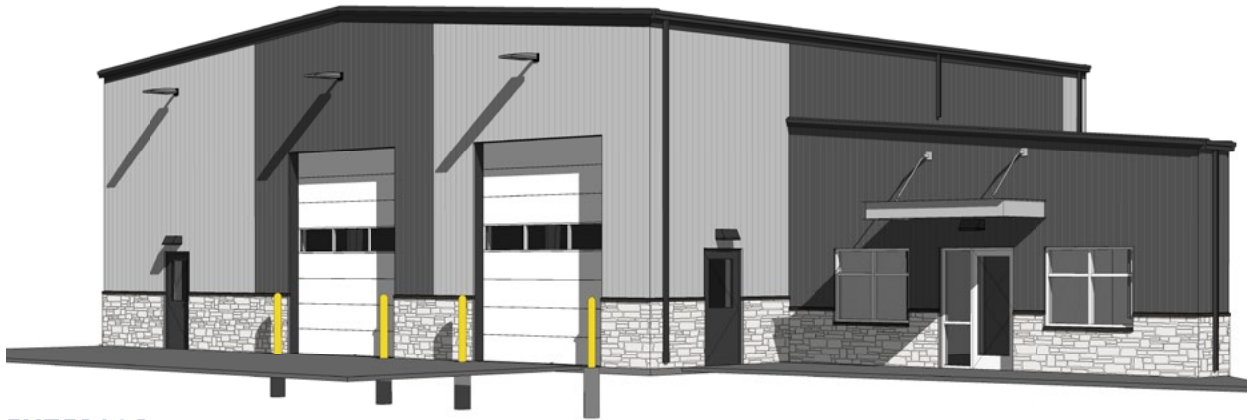
PROPERTY DETAILS

Property Type	Industrial
Location	Flamingo Ave & Debra Drive, Nampa
Land Size	0.35 Acres
Building Size	Warehouse: 3,299 SF Office: 536 SF Total: 3,835 SF
Clear Height	18'
Loading	2 12' x 14' doors
Parcel #	R1214910000
Zoning	Business Commercial
Power	Potential for 600 Amps Available
Lease Rate	Contact agent

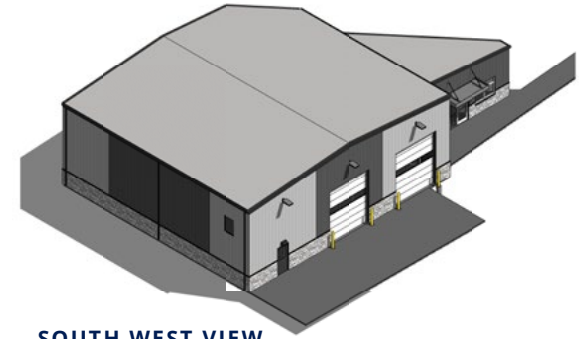


DEBRA DRIVE

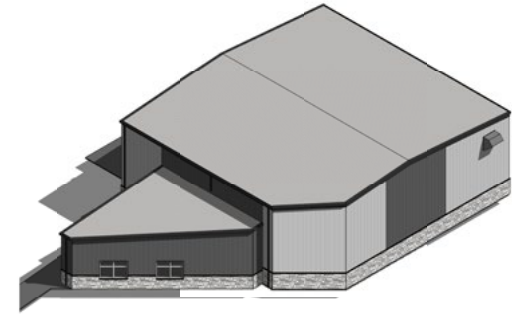
Conceptual Renderings



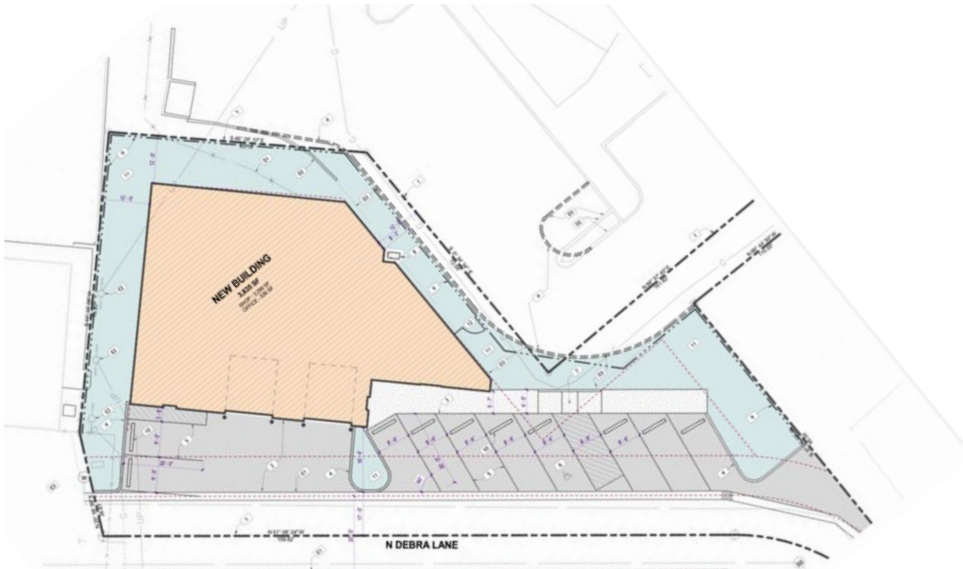
EXTERIOR



SOUTH WEST VIEW



NORTH EAST VIEW



CONCEPTUAL SITE PLAN

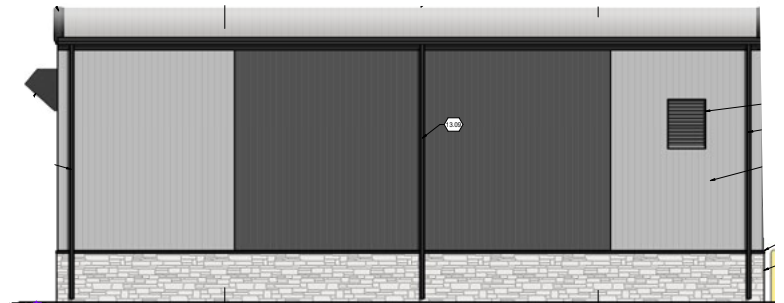


DEBRA DRIVE

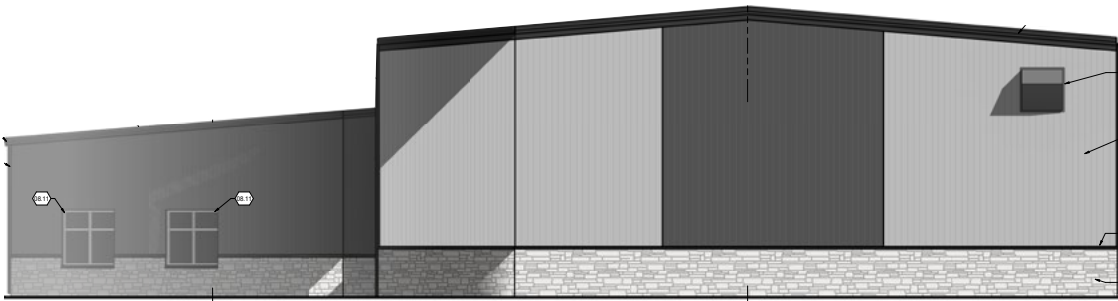
Conceptual Renderings



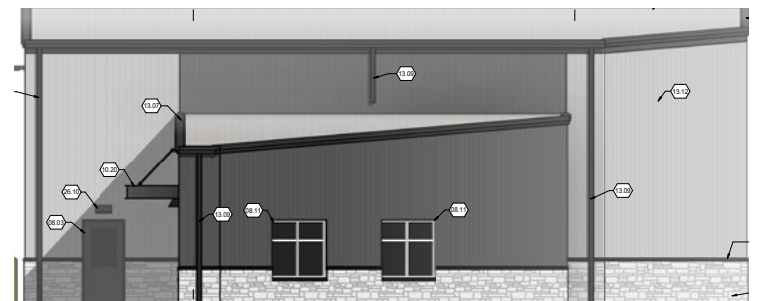
SOUTH ELEVATION



WEST ELEVATION



NORTH ELEVATION



EAST ELEVATION

DEBRA DRIVE

Location



755 W. Front St, Ste 300
Boise, ID 83702

PH: +1 208 345 9000

This document has been prepared by Colliers for advertising and general information only. Colliers makes no guarantees, representations or warranties of any kind, expressed or implied, regarding the information including, but not limited to, warranties of content, accuracy and reliability. Any interested party should undertake their own inquiries as to the accuracy of the information. Colliers excludes unequivocally all inferred or implied terms, conditions and warranties arising out of this document and excludes all liability for loss and damages arising there from. This publication is the copyrighted property of Colliers and/or its licensor(s). © 2026. All rights reserved. This communication is not intended to cause or induce breach of an existing listing agreement. Colliers Paragon, LLC.