

FOR SALE > RETAIL

DEALERSHIP PROPERTY

5900 HIGHLAND ROAD | WATERFORD, MI



FULL SERVICE AUTO DEALERSHIP FOR SALE

> PROPERTY HIGHLIGHTS

- 49,434 Square Feet
- 7.28 Acre Site
- Plenty of Vehicle Parking
- 34 Service Bays
- Corner Location on Highland Road
Across the Street from Oakland County
International Airport
- Available End of 2018
- Sale Price: \$3,500,000.00 (\$70.80/SF)

COLLIERS INTERNATIONAL
2 Corporate Drive | Suite 300
Southfield, Michigan 48076

For More Information Call:

JOHN FRICKE

PHONE **248 540 1000** EXT **1887**

EMAIL john.fricke@colliers.com

colliers.com/detroit



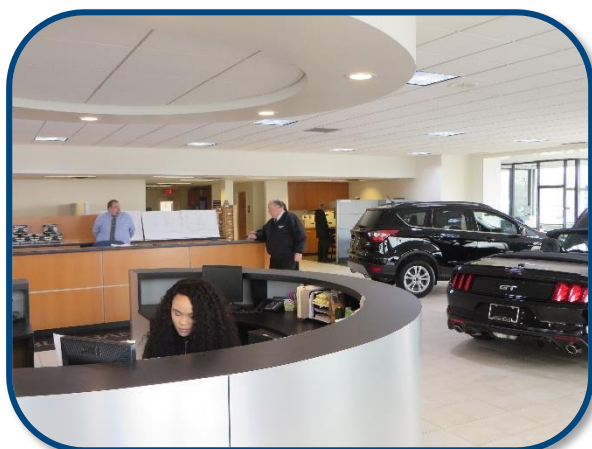
FOR SALE > RETAIL

DEALERSHIP PROPERTY

5900 HIGHLAND ROAD | WATERFORD, MI



> PROPERTY PHOTOS



JOHN FRICKE
PHONE 248 540 1000 EXT 1887
EMAIL john.fricke@colliers.com



COLLIERS INTERNATIONAL
2 Corporate Dr. | Suite 300
Southfield, Michigan 48076

FOR SALE > RETAIL

DEALERSHIP PROPERTY

5900 HIGHLAND ROAD | WATERFORD, MI



> FLOOR PLAN



JOHN FRICKE

PHONE 248 540 1000 EXT 1887

EMAIL john.fricke@colliers.com



COLLIERS INTERNATIONAL

2 Corporate Dr. | Suite 300
Southfield, Michigan 48076

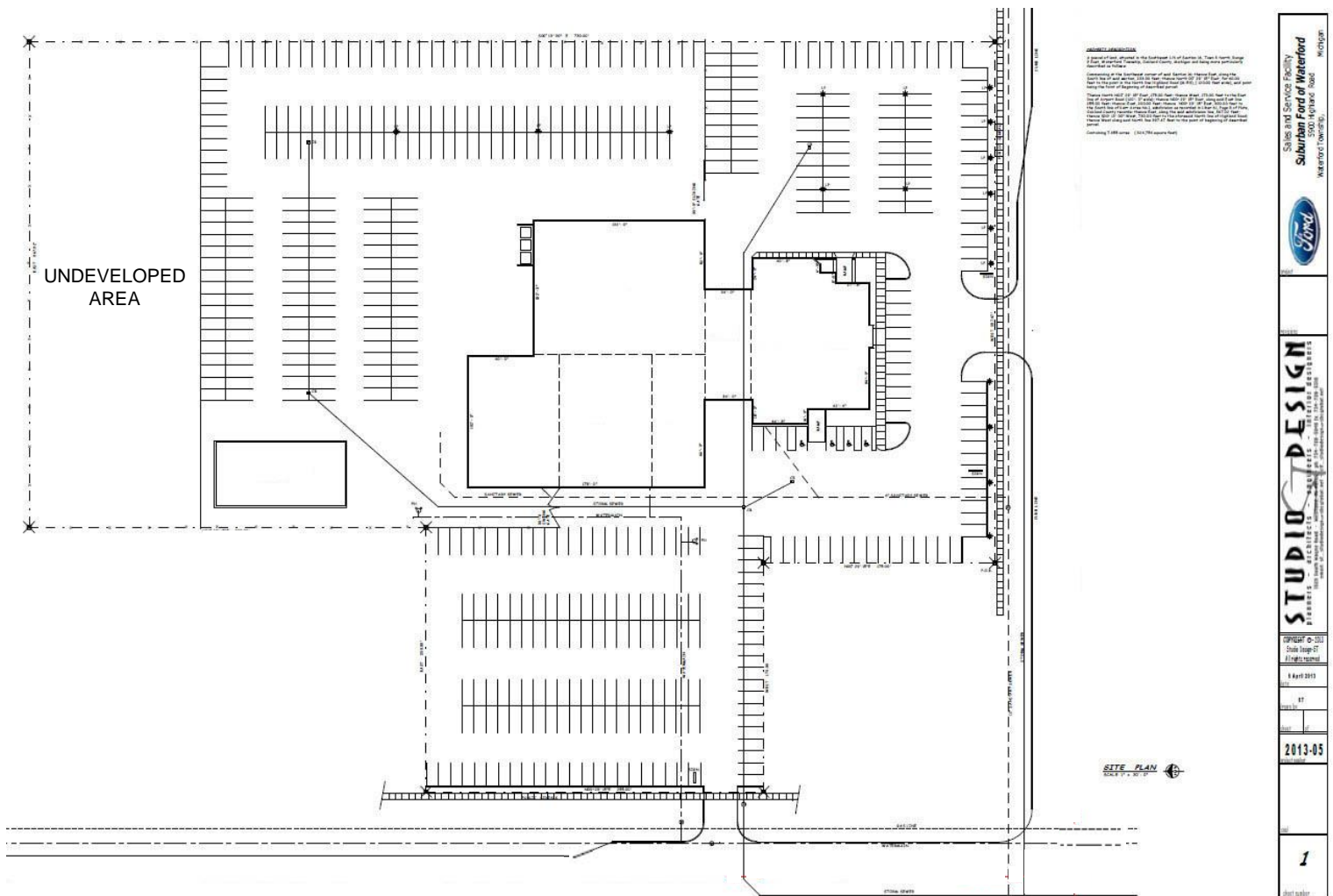
FOR SALE > RETAIL

DEALERSHIP PROPERTY

5900 HIGHLAND ROAD | WATERFORD, MI



> SITE PLAN



JOHN FRICKE
PHONE 248 540 1000 EXT 1887
EMAIL john.fricke@colliers.com



COLLIERS INTERNATIONAL
2 Corporate Dr. | Suite 300
Southfield, Michigan 48076

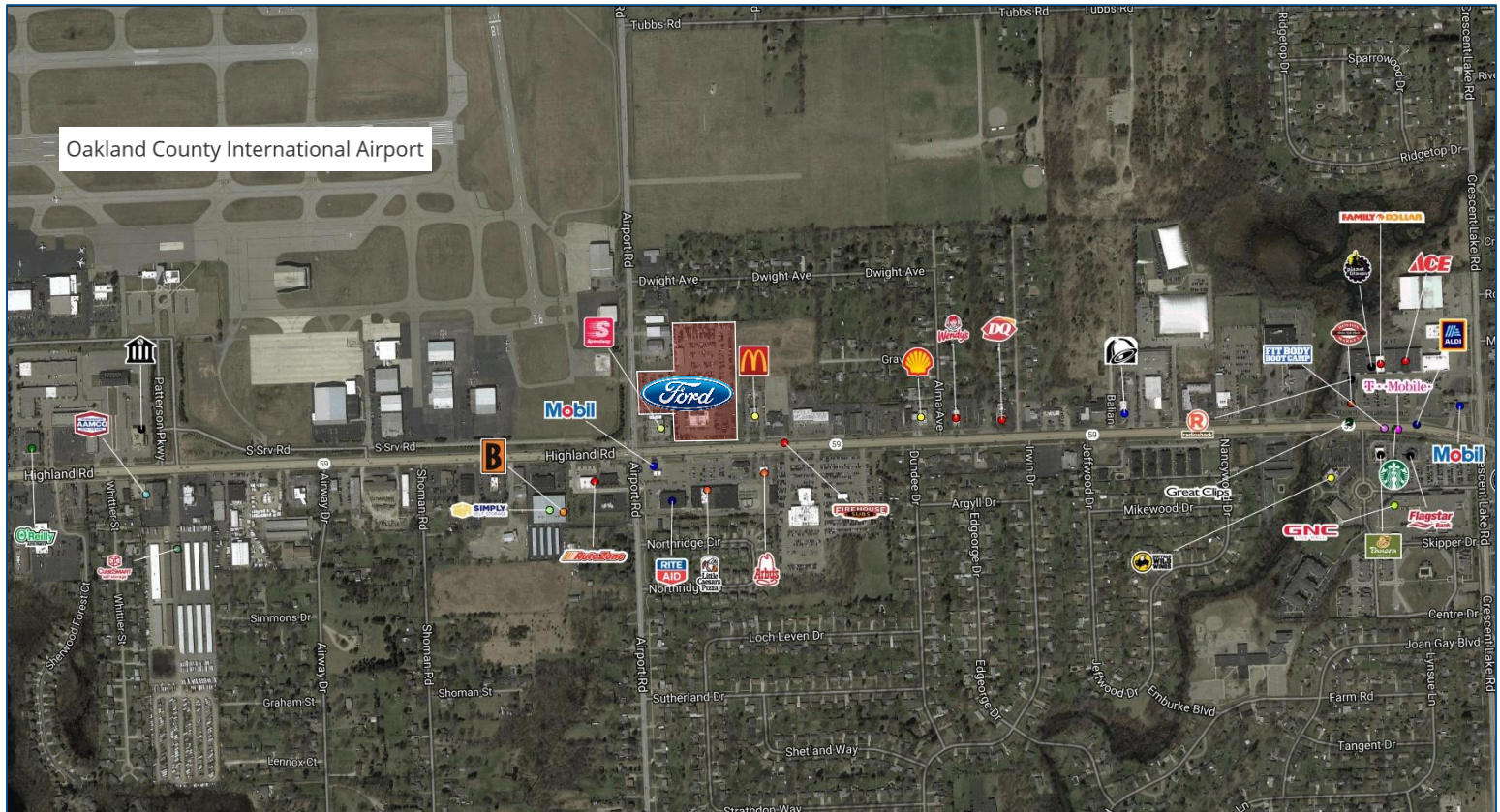
FOR SALE > RETAIL

DEALERSHIP PROPERTY

5900 HIGHLAND ROAD | WATERFORD, MI



> AERIAL and DEMOGRAPHICS



> DEMOGRAPHICS

	1 MILE	3 MILE	5 MILE
POPULATION	6,500	55,127	144,173
AVG. INCOME	\$64,751	\$81,677	\$88,705
HOUSEHOLDS	2,934	22,696	57,543

> TRAFFIC COUNTS

- Highland Road – 40,000 VPD
- Airport Road – 16,000 VPD

JOHN FRICKE
PHONE 248 540 1000 EXT 1887
EMAIL john.fricke@colliers.com



COLLIERS INTERNATIONAL
2 Corporate Dr. | Suite 300
Southfield, Michigan 48076

FOR SALE > RETAIL

DEALERSHIP PROPERTY

5900 HIGHLAND ROAD | WATERFORD, MI



> AERIAL



JOHN FRICKE
PHONE 248 540 1000 EXT 1887
EMAIL john.fricke@colliers.com



COLLIERS INTERNATIONAL
2 Corporate Dr. | Suite 300
Southfield, Michigan 48076

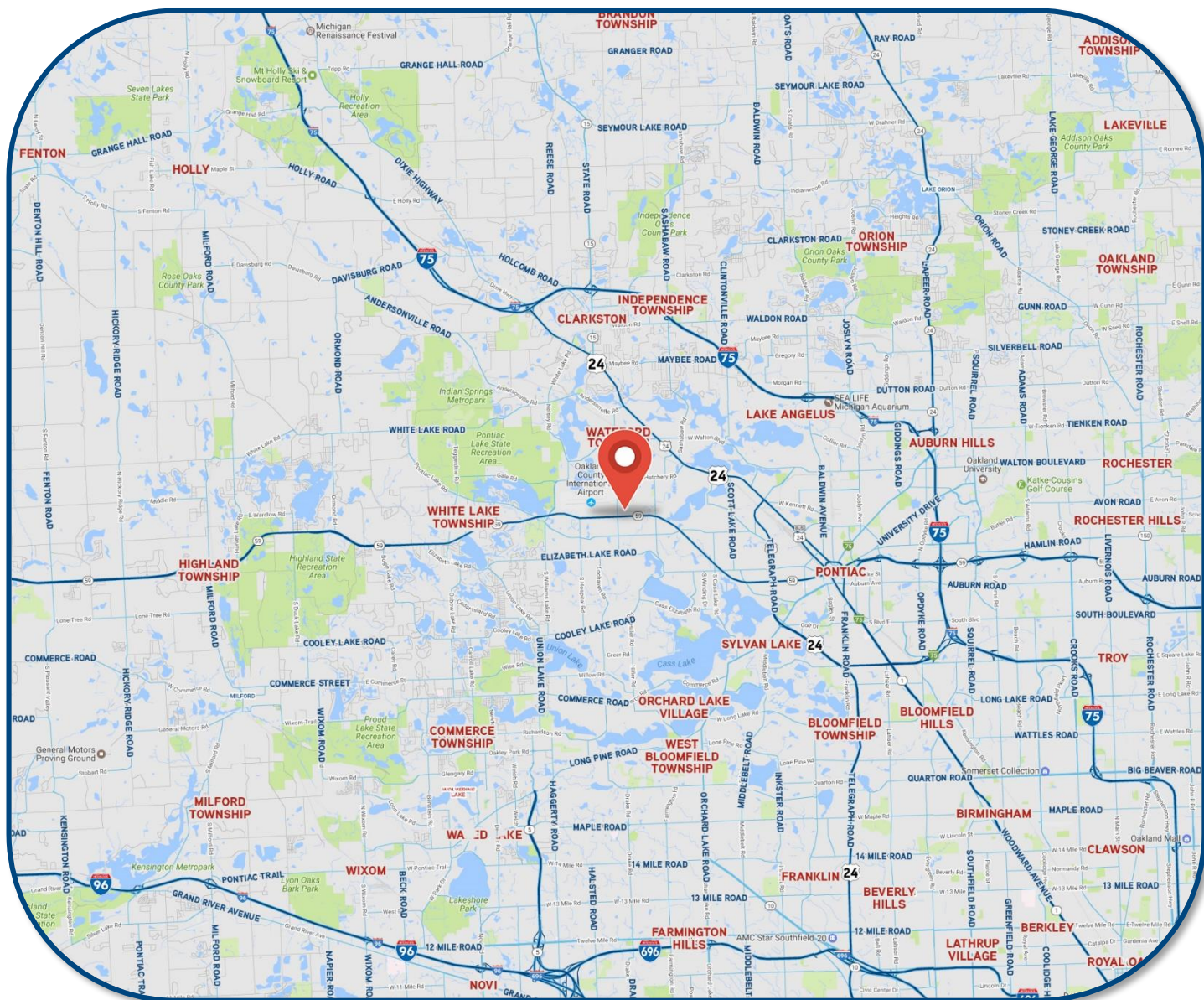
FOR SALE > RETAIL

DEALERSHIP PROPERTY

5900 HIGHLAND ROAD | WATERFORD, MI

Colliers
INTERNATIONAL

> LOCATION MAP



JOHN FRICKE

PHONE 248 540 1000 EXT 1887

EMAIL john.fricke@colliers.com

Colliers
INTERNATIONAL

COLLIERS INTERNATIONAL

2 Corporate Dr. | Suite 300
Southfield, Michigan 48076