

FOR LEASE > ±4,476 SF & ±8,712 SF OFFICE SPACE

490 Chadbourne Road, Suites A & C

FAIRFIELD, CA



## BUSCH CAMPUS PARK

### Property Highlights

- > ±34,000 total sq. ft. office building (2 floors)
- > Available:
  - 1st Floor- ±4,476 rentable sq. ft. (±3,976 useable sq. ft.) - Suite C
  - 2nd Floor- ±8,712 rentable sq. ft. (±7,885 useable sq. ft.) - Suite A
- > Excellent central location at the intersection of Interstate 80 and Hwy 12
- > High end architecture featuring brick and glass
- > Open designed lobby with elevator
- > Parking 4/1,000 rentable sq. ft.
- > Power: 1,200 amps @ 120/208 volts to building
- > Extensive landscaping throughout
- > DSL service available
- > Fiber optic line in street

### Lease Rate

\$1.65 per rentable square foot, NNN—1st Floor

\$1.55 per rentable square foot, NNN—2nd Floor



### Contact

JON QUICK

+1 707 863 8359

jon.quick@colliers.com

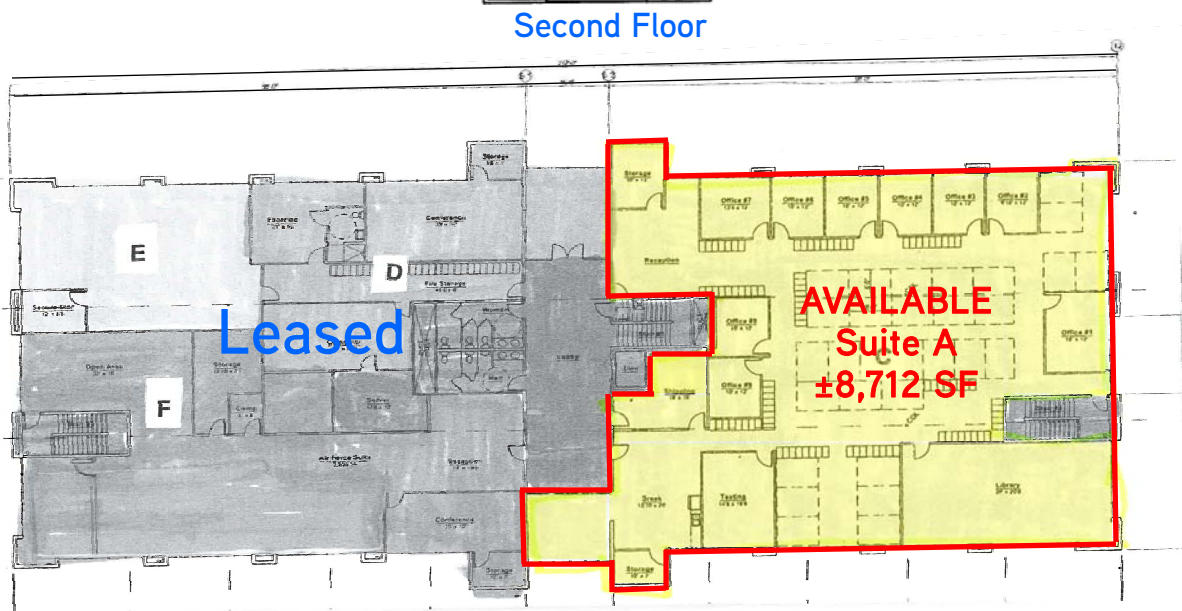
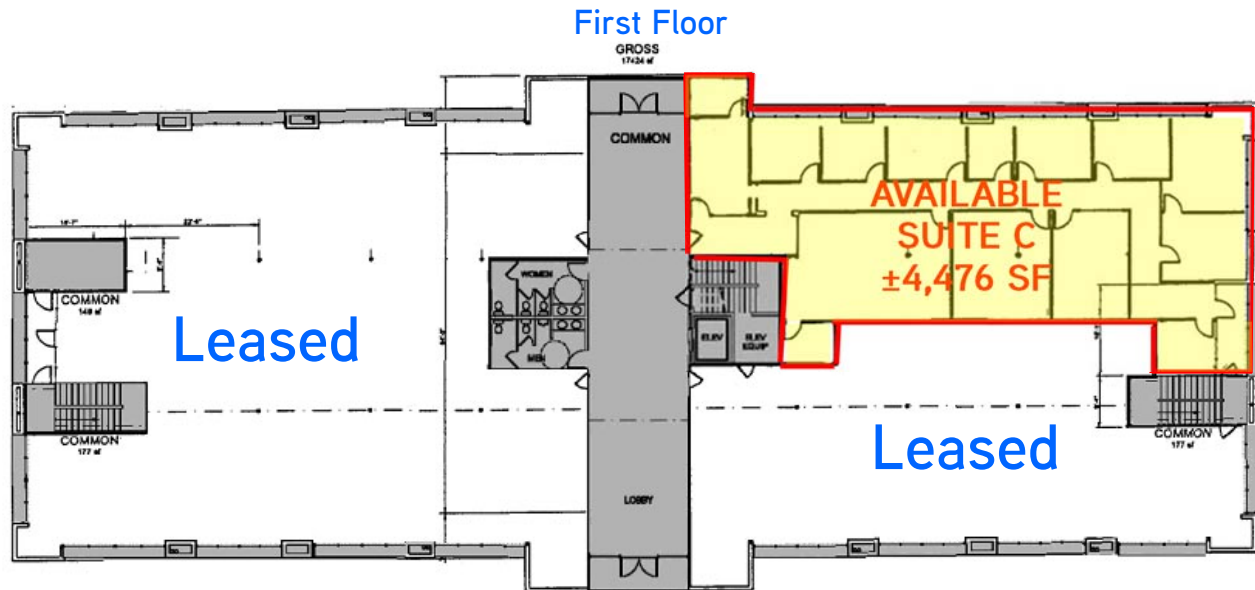
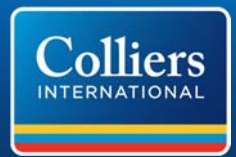
CA License No. 01242750

The information furnished has been obtained from sources we deem reliable and is submitted subject to errors, omissions, and changes. Although Colliers Parrish International, Inc. has no reason to doubt its accuracy, we do not guarantee it. All information should be verified by the recipient prior to lease, purchase, exchange, or execution of legal documents. © 2015 Colliers International

FOR LEASE > ± ±4,476 SF & ±8,712 SF OFFICE SPACE

490 Chadbourne Road, Suites A & C

FAIRFIELD, CA



Busch Campus Park is a high end ±210,000 sq. ft. ten (10) building office complex. Ideally located at the intersection of Interstate 80 and Highway 12, Busch Campus Park offers a truly central location for both Solano County and those who do business from Sacramento to the Bay Area.

#### Contact

JON QUICK

+1 707 863 8359

jon.quick@colliers.com

CA License No. 01242750

COLLIERS INTERNATIONAL

360 Campus Lane, suite 101

Fairfield, CA 94534

www.colliers.com