

FOR LEASE > RETAIL

# GARRISON PLACE SHOPPING CENTER

22902 – 22950 MICHIGAN AVENUE | DEARBORN, MICHIGAN



## EXCELLENT ACCESSIBILITY

### > PROPERTY HIGHLIGHTS

- 3,464 & 7,560 Square Foot Spaces Available
- Kroger Anchored Center with Great Clips, Holiday Grill, Luxe Nails & Dearborn Family Dentistry as Co-Tenants
- Area Retailers Include: CVS, Marshalls, Staples and Rite Aid
- Excellent Traffic Counts of 48,000 on Michigan Ave

DEMOGRAPHICS	Category	1 Mile	3 Mile	5 Mile
	Population	15,110	112,184	332,859
	Average Income	\$79,653	\$61,690	\$54,491
	Households	6,552	44,504	126,873

**COLLIERS INTERNATIONAL**  
2 Corporate Drive | Suite 300  
Southfield, Michigan 48076

For More Information Call:

**LOU FRANGO**  
PHONE 248 540 1000 EXT 1678  
EMAIL [lou.frango@colliers.com](mailto:lou.frango@colliers.com)



[colliers.com/detroit](http://colliers.com/detroit)



FOR LEASE > RETAIL

# GARRISON PLACE SHOPPING CENTER

22902 – 22950 MICHIGAN AVENUE | DEARBORN, MICHIGAN



## > PROPERTY PHOTOS



**LOU FRANGO**

PHONE 248 540 1000 EXT 1678

EMAIL [lou.frango@colliers.com](mailto:lou.frango@colliers.com)



**COLLIERS INTERNATIONAL**

2 Corporate Dr. | Suite 300  
Southfield, Michigan 48076



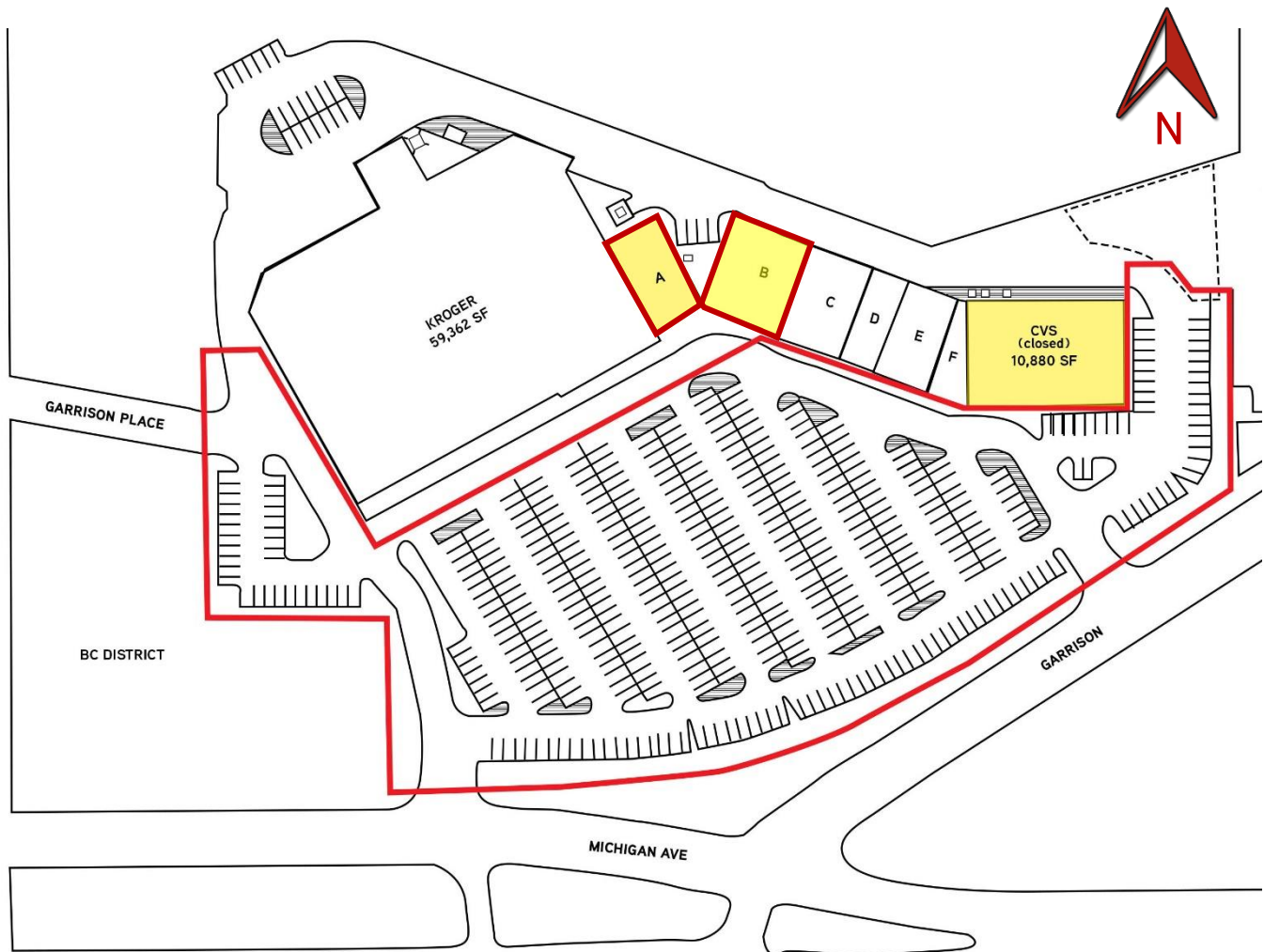
FOR LEASE > RETAIL

# GARRISON PLACE SHOPPING CENTER

22902 – 22950 MICHIGAN AVENUE | DEARBORN, MICHIGAN



## > SITE PLAN



TENANT	ADDRESS	SQ FT	TENANT	ADDRESS	SQ FT
KROGER	23000	59,662	HOLIDAY GRILL	22926	3,000
BANK OF AMERICA – ATM	2300	400	LUXE NAILS & SPA	22918	1,600
AVAILABLE	22950	3,464	DEARBORN FAMILY DENTISTRY	22914	3,676
AVAILABLE	22938	7,560	CVS (CLOSED)	22900	10,880

LOU FRANGO

PHONE 248 540 1000 EXT 1678

EMAIL [lou.frango@colliers.com](mailto:lou.frango@colliers.com)



COLLIERS INTERNATIONAL

2 Corporate Dr. | Suite 300  
Southfield, Michigan 48076

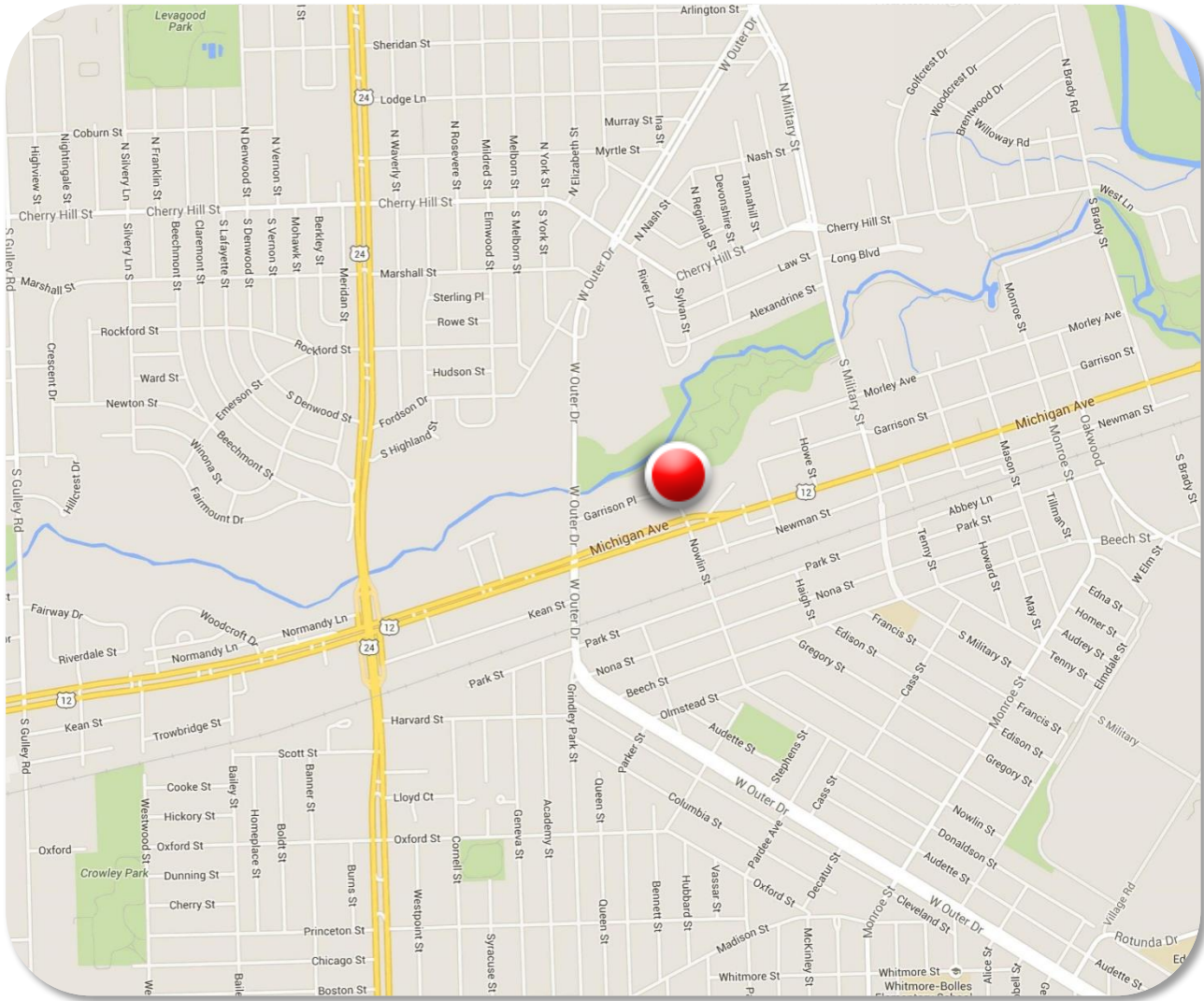
FOR LEASE > RETAIL

# GARRISON PLACE SHOPPING CENTER

22902 – 22950 MICHIGAN AVENUE | DEARBORN, MICHIGAN



## > LOCATION MAP



**LOU FRANGO**

PHONE 248 540 1000 EXT 1678

EMAIL [lou.frango@colliers.com](mailto:lou.frango@colliers.com)



**COLLIERS INTERNATIONAL**

2 Corporate Dr. | Suite 300  
Southfield, Michigan 48076



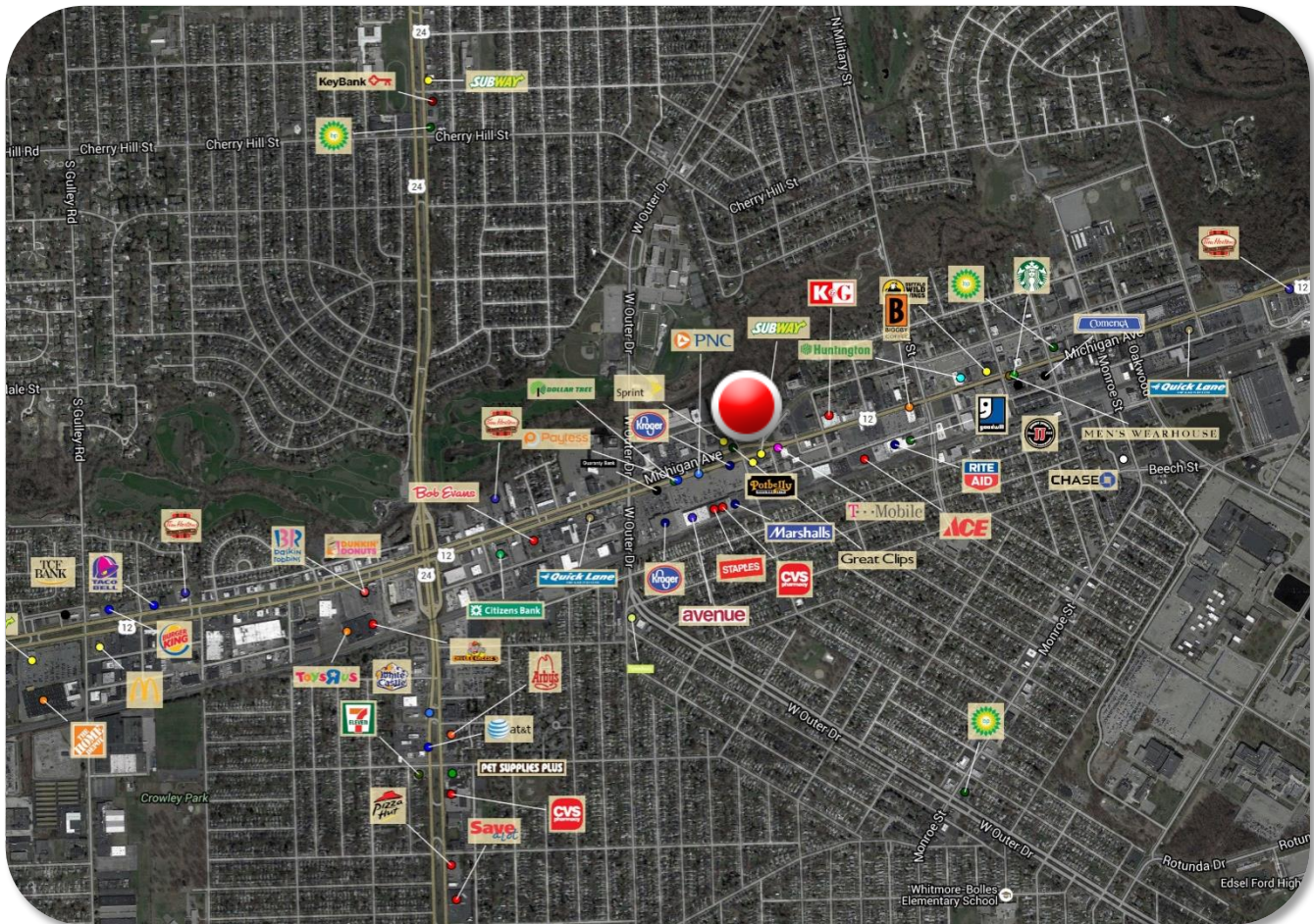
FOR LEASE > RETAIL

# GARRISON PLACE SHOPPING CENTER

22902 – 22950 MICHIGAN AVENUE | DEARBORN, MICHIGAN



## > MERCHANT MAP



**LOU FRANGO**  
PHONE 248 540 1000 EXT 1678  
EMAIL [lou.frango@colliers.com](mailto:lou.frango@colliers.com)



**COLLIERS INTERNATIONAL**  
2 Corporate Dr. | Suite 300  
Southfield, Michigan 48076

# SUMMARY PROFILE

2000-2010 Census, 2015 Estimates with 2020 Projections

Calculated using Weighted Block Centroid from Block Groups



Lat/Lon: 42.3045/-83.2587

RS1

22902 Michigan Ave

Dearborn, MI 48124

1 mi radius

3 mi radius

5 mi radius

POPULATION	2015 Estimated Population	14,094	105,594	314,300
	2020 Projected Population	13,403	101,408	305,099
	2010 Census Population	15,110	112,184	332,859
	2000 Census Population	15,470	116,901	354,425
	Projected Annual Growth 2015 to 2020	-1.0%	-0.8%	-0.6%
	Historical Annual Growth 2000 to 2015	-0.6%	-0.6%	-0.8%
	2015 Median Age	41.2	37.1	35.7
HOUSEHOLDS	2015 Estimated Households	6,291	43,181	123,171
	2020 Projected Households	6,094	42,336	121,935
	2010 Census Households	6,552	44,504	126,873
	2000 Census Households	6,703	47,189	137,260
	Projected Annual Growth 2015 to 2020	-0.6%	-0.4%	-0.2%
	Historical Annual Growth 2000 to 2015	-0.4%	-0.6%	-0.7%
RACE AND ETHNICITY	2015 Estimated White	89.8%	76.5%	69.2%
	2015 Estimated Black or African American	5.1%	16.9%	24.2%
	2015 Estimated Asian or Pacific Islander	2.1%	2.2%	1.8%
	2015 Estimated American Indian or Native Alaskan	0.3%	0.3%	0.4%
	2015 Estimated Other Races	2.7%	4.1%	4.5%
	2015 Estimated Hispanic	4.8%	5.4%	5.4%
INCOME	2015 Estimated Average Household Income	\$79,653	\$61,690	\$54,491
	2015 Estimated Median Household Income	\$68,296	\$51,586	\$45,243
	2015 Estimated Per Capita Income	\$35,557	\$25,278	\$21,403
EDUCATION (AGE 25+)	2015 Estimated Elementary (Grade Level 0 to 8)	2.0%	3.9%	5.3%
	2015 Estimated Some High School (Grade Level 9 to 11)	3.3%	7.4%	9.5%
	2015 Estimated High School Graduate	15.8%	29.2%	32.1%
	2015 Estimated Some College	24.5%	25.2%	25.6%
	2015 Estimated Associates Degree Only	10.9%	8.3%	8.1%
	2015 Estimated Bachelors Degree Only	24.9%	15.5%	12.2%
	2015 Estimated Graduate Degree	18.5%	10.5%	7.3%
BUSINESS	2015 Estimated Total Businesses	762	3,797	10,284
	2015 Estimated Total Employees	6,342	49,246	122,581
	2015 Estimated Employee Population per Business	8.3	13.0	11.9
	2015 Estimated Residential Population per Business	18.5	27.8	30.6

This report was produced using data from private and government sources deemed to be reliable. The information herein is provided without representation or warranty.