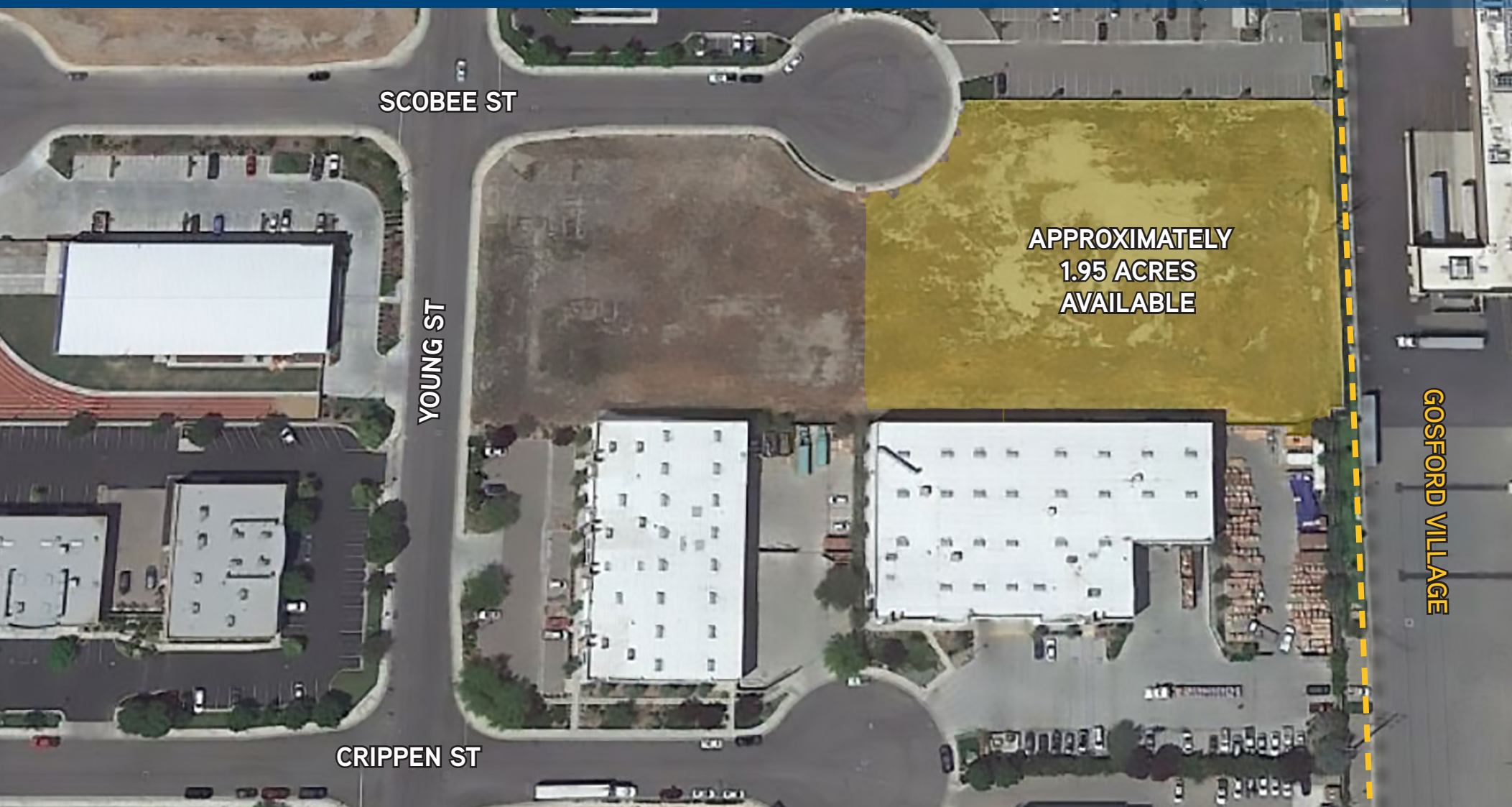


FOR SALE > M-2 ZONED LAND

GOSFORD BUSINESS PARK

8503 SCOBEE STREET, BAKERSFIELD, CA 93313



WESLEY MCDONALD
SENIOR VICE PRESIDENT | PRINCIPAL
CENTRAL CALIFORNIA
INDUSTRIAL PROPERTIES TEAM
LICENSE NUMBER 01511739
DIR 661 631 3828
wesley.mcdonald@colliers.com

COLLIERS INTERNATIONAL
10000 Stockdale Highway
Suite 102
Bakersfield, CA 93311
www.colliers.com/bakersfield



FOR SALE > M-2 ZONED LAND

GOSFORD BUSINESS PARK

PROPERTY INFORMATION

8503 SCOBEE STREET, BAKERSFIELD, CA 93313

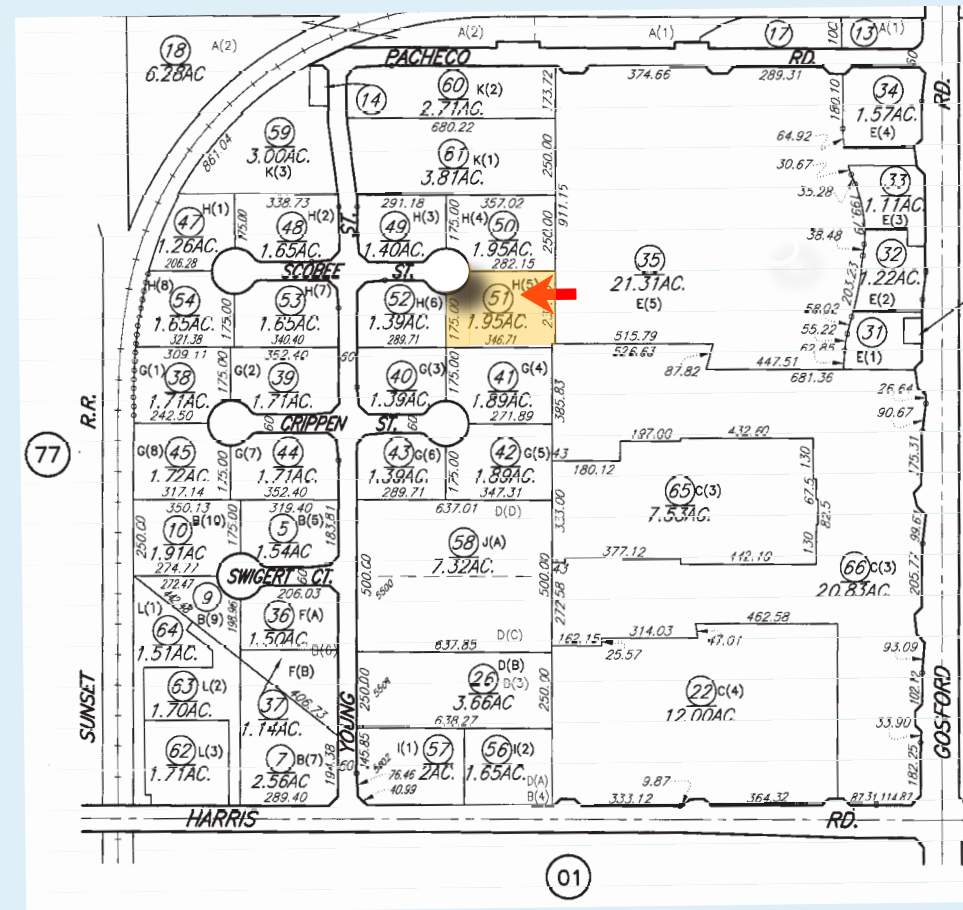
Gosford Business Park is located in Southwest Bakersfield and is one of the newer business parks in Bakersfield. The subject parcel offered for sale is one of the last remaining in the park. This location is just north of Crossroads Business Park, wherein new office buildings are being developed and west of Gosford Village, which is the premier retail development in the southwest.

AVAILABLE

Approximately 1.95 acres of M-2 zoned land....\$722,007.00 (\$8.50/SF)
Can be combined with adjacent parcel (497-130-52) for a total of 3.34 acres

HIGHLIGHTS

- > APN #497-130-51
- > M-2 PD Zoning, City of Bakersfield
- > Ready for development
- > Curbs, gutters and sidewalks are in place
- > Utilities are stubbed to site:
 - Electric: Pacific Gas & Electric Company
 - Gas: Pacific Gas & Electric Company
 - Sewer: City of Bakersfield
 - Water: City of Bakersfield



COLLIERS INTERNATIONAL
10000 Stockdale Highway, Suite 102
Bakersfield, CA 93311
www.colliers.com/bakersfield



FOR SALE > M-2 ZONED LAND GOSFORD BUSINESS PARK COMPETITION MAP

8503 SCOBEE STREET, BAKERSFIELD, CA 93313



CONTACT US

WESLEY MCDONALD
SENIOR VICE PRESIDENT | PRINCIPAL
CENTRAL CALIFORNIA
INDUSTRIAL PROPERTIES TEAM
LICENSE NUMBER 01511739
DIR 661 631 3828
wesley.mcdonald@colliers.com

COLLIERS INTERNATIONAL
10000 Stockdale Highway,
Suite 102
Bakersfield, CA 93311
www.colliers.com/bakersfield

