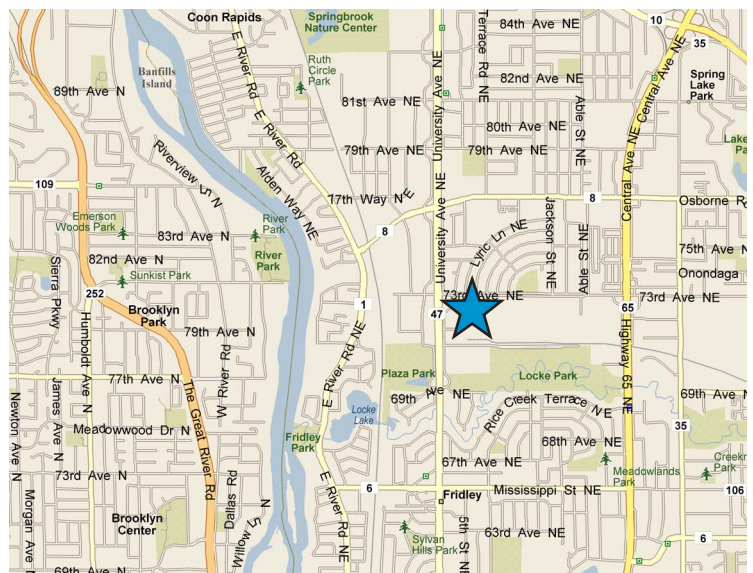


North Central I Fridley, MN For Lease

JUSTIN RATH
952 897 7803 direct
612 720 6957 mobile
justin.rath@colliers.com



COLLIERS INTERNATIONAL
5985 Rice Creek Parkway, Suite 105
Shoreview, MN 55126
www.colliers.com/msp



FOR LEASE > WAREHOUSE/OFFICE

Address:	500 73rd Avenue NE, Fridley, MN
Building Size:	31,699 square feet
Availability:	Approximately 15,799 square feet
Divisibility:	1,127 square feet
Utilities:	Included in CAM & taxes Tenant responsible for data/phone & janitorial
Amenities:	<ul style="list-style-type: none">• Generous TI package• Ample parking• Remodeled in 2016

LEASE RATES:

\$6.00 per square foot - office/showroom space

2018 EST TAX & CAM (INCLUDING UTILITIES):

\$5.69 per square foot - total

\$1.30 per square foot - taxes

\$4.39 per square foot - CAM, utilities & common janitorial

SUITES:

Max Contiguous:

15,799 square feet

Suite 105:

4,428 square feet

Suite 112:

1,127 square feet

Suite 114:

1,286 square feet

Suite 119:

1,796 square feet

Suite 121:

2,752 square feet

Suite 123:

3,103 square feet



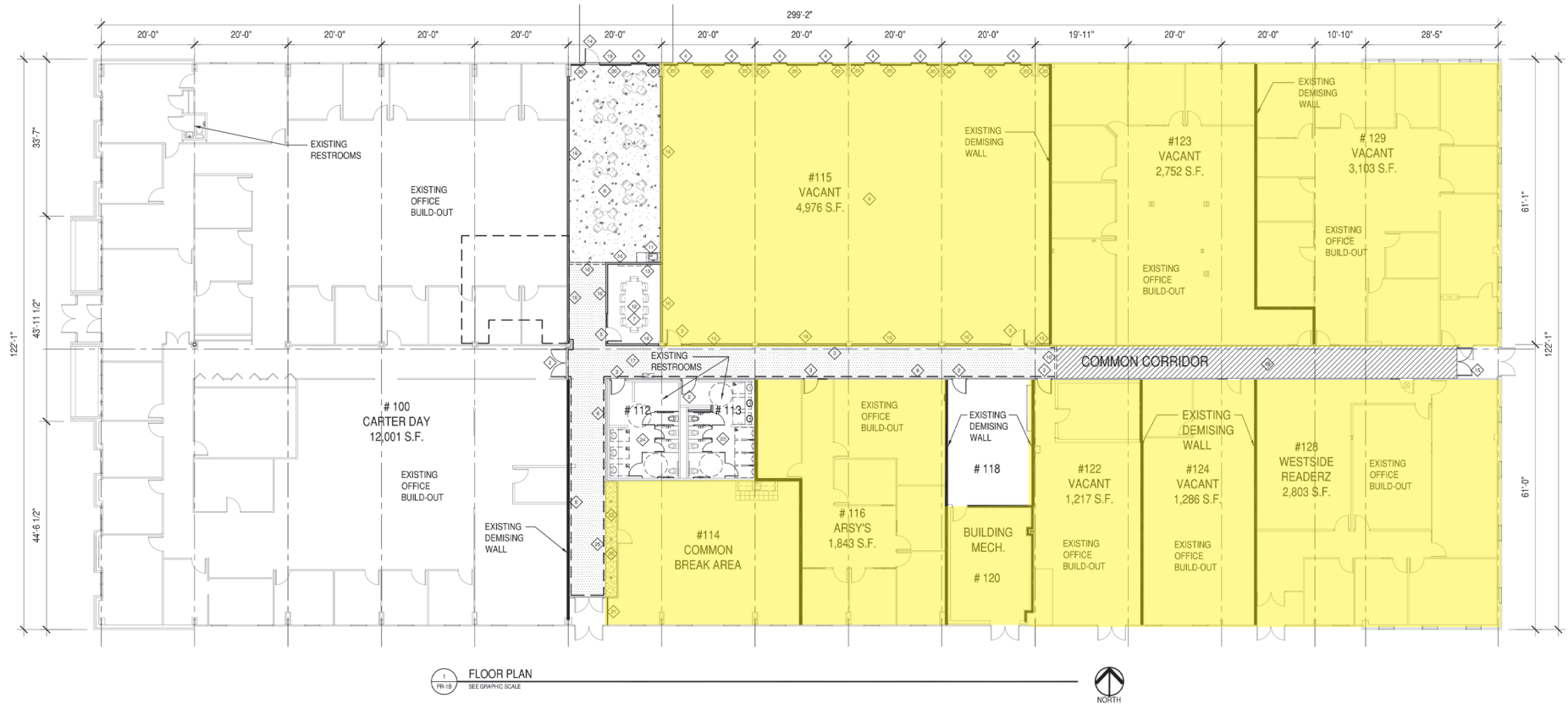
CONTACT US

JUSTIN RATH
952 897 7803 direct
612 720 6957 mobile
justin.rath@colliers.com

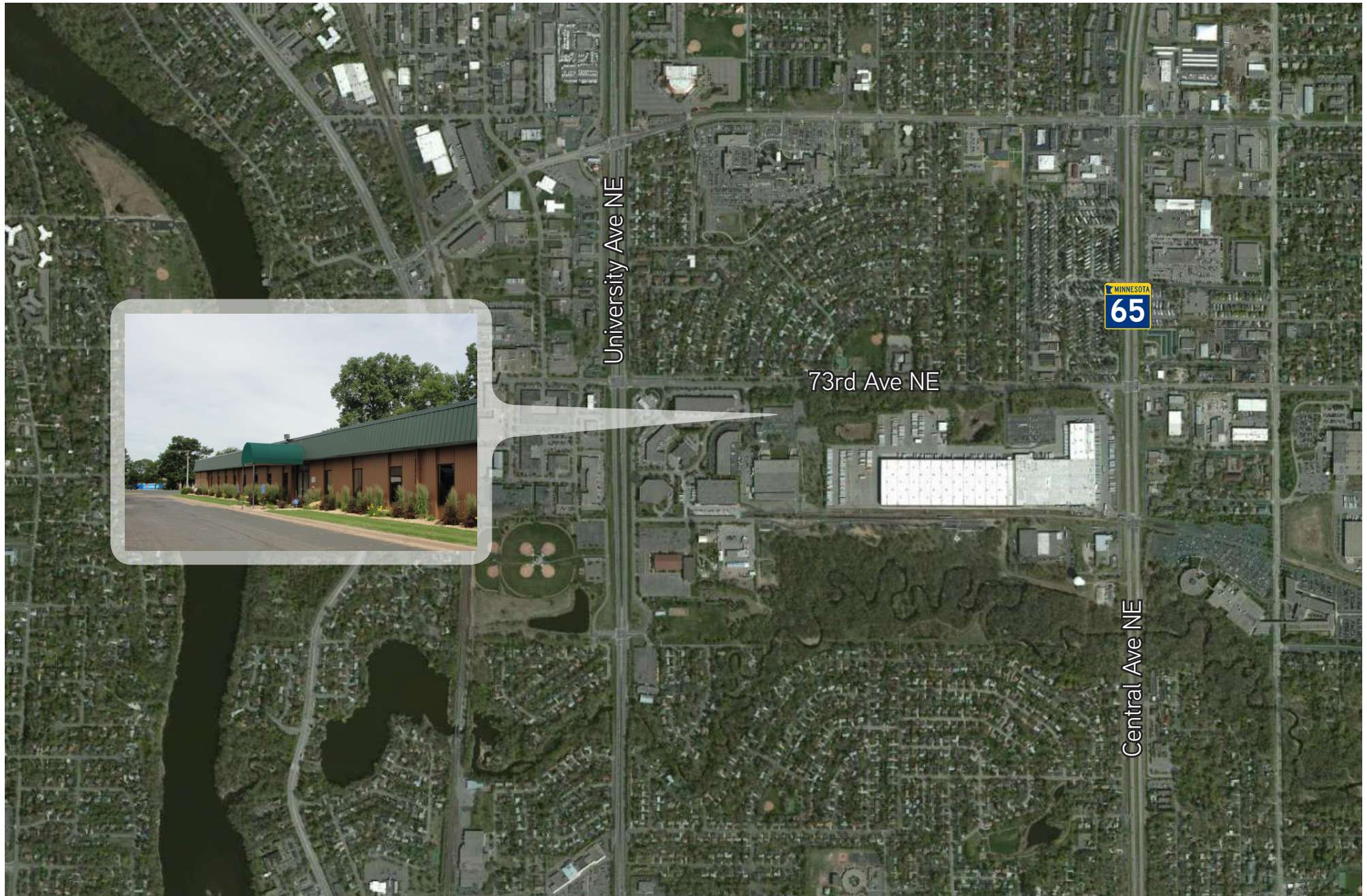
This document/email has been prepared by Colliers International for advertising and general information only. Colliers International makes no guarantees, representations or warranties of any kind, expressed or implied, regarding the information including, but not limited to, warranties of content, accuracy and reliability. Any interested party should undertake their own inquiries as to the accuracy of the information. Colliers International excludes unequivocally all inferred or implied terms, conditions and warranties arising out of this document and excludes all liability for loss and damages arising there from. This publication is the copyrighted property of Colliers International and for its licensor(s). © 2018. All rights reserved. This communication is not intended to cause or induce breach of an existing listing agreement.



COLLIERS INTERNATIONAL
5985 Rice Creek Parkway
Suite 105
Shoreview, MN 55126
www.colliers.com/msp

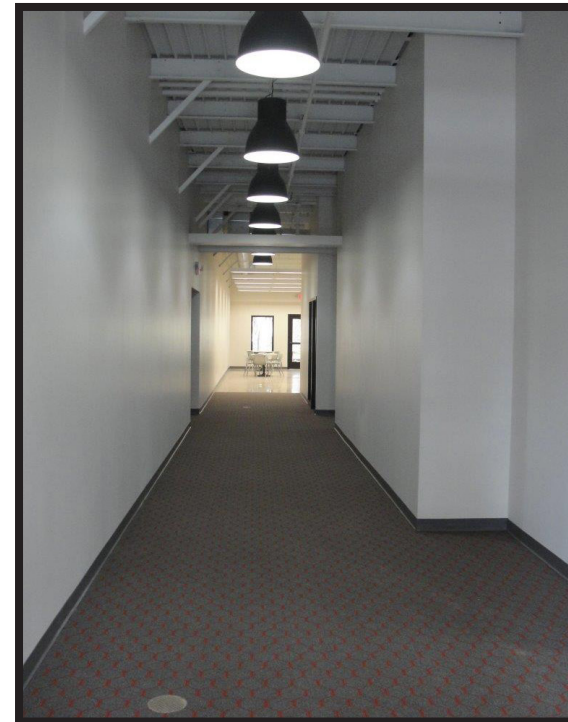
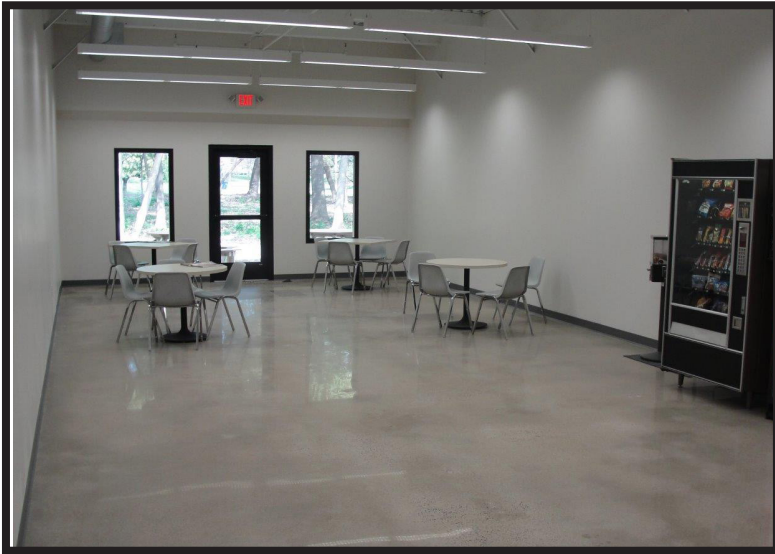


JUSTIN RATH
952 897 7803 direct
612 720 6957 mobile
justin.rath@colliers.com



JUSTIN RATH
952 897 7803 direct
612 720 6957 mobile
justin.rath@colliers.com





JUSTIN RATH
952 897 7803 direct
612 720 6957 mobile
justin.rath@colliers.com

