

# 363

KING STREET | CHARLESTON

2,554 SF of High Street  
Retail For Lease



ELYSE WELCH, CCIM  
Brokerage Associate  
+1 843 720 7508  
elyse.welch@colliers.com

JOHN ORR, CCIM  
Vice President  
+1 843 720 7504  
john.orr@colliers.com

DANIEL PELLEGRINO  
Senior Brokerage Associate  
+1 843 720 7507  
daniel.pellegrino@colliers.com



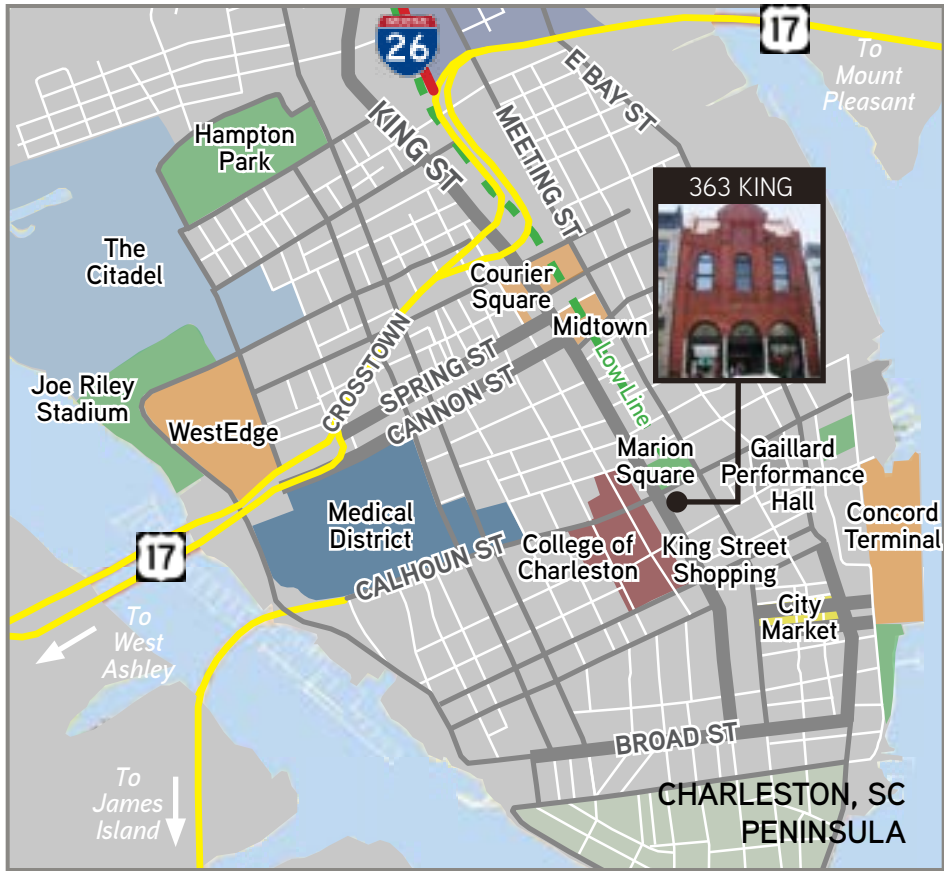


# PRIME LOCATION ON MIDDLE KING

363 King Street provides 2,554 SF of retail frontage on King Street, one of the top shopping destinations in the country. Charleston's King Street is a blend of historic architecture, shopping and dining experiences which has earned the loyalty of locals and continues to attract new shoppers daily. World-class retailers including Apple, Williams Sonoma, West Elm, Brooks Brothers, Louis Vuitton and H&M are located on King. Approximately 5.1 million people visit Charleston annually spending on average \$211 per person per day.

The site is located on Middle King and within steps of Marion Square, close to the College of Charleston, numerous hotels and residences. Sales are peaking in this high pedestrian traffic corridor of King. Proposed improvements to the exterior will enhance storefront windows.

King Street remains the ideal location for retail thanks to it's walking experience and mix of local, regional and national tenants and restaurants. Due to Charleston's land-locked position and booming tourism industry, retail space is limited and in high demand.



Located in the heart of Charleston near King & Calhoun in high pedestrian traffic corridor.



King Street is among the top 10 shopping destinations in the U.S.\*  
\*U.S. News & World Report



Proximate to tourists, day trippers, students and employees. Approximately 5.1 million visitors annually.



Walking distance to numerous hotels, apartments, employers. Walk score: 98



Move-in ready retail space



# FRONTAGE ON KING STREET



CHARLESTON, SC

No. 1

CITY IN THE U.S.

#4

BEST AMERICAN CITIES FOR FOODIES

5.1

MILLION VISITORS PER YEAR & GROWING

\$211

SPENDING PER VISITOR PER DAY

\$820,000

AVG. HOME SALE PRICE

3,000

NEW MULTIFAMILY UNITS COMING ONLINE

22,000

STUDENTS WITHIN A 1.5 MILE RADIUS

5,000+

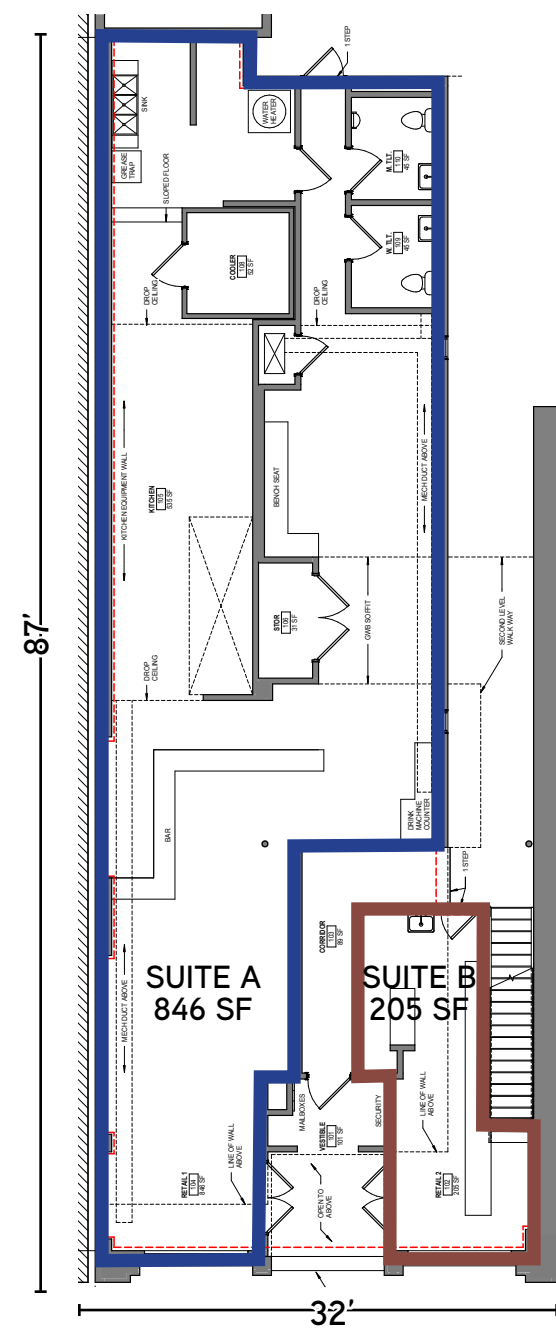
HOTEL ROOMS EXISTING & UNDER CONSTRUCTION

3

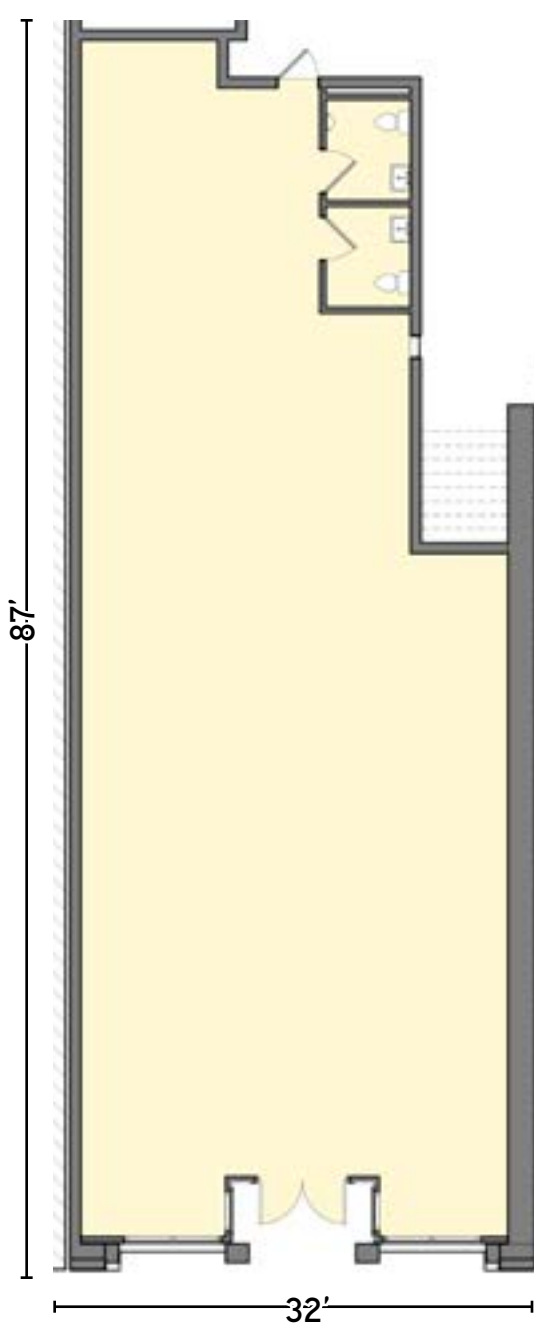
JAMES BEARD AWARD WINNING RESTAURANTS

\*As of YTD January 2017

EXISTING FLOORPLAN | SUITES A & B



PROPOSED FLOORPLAN | 2,554 SF



View virtual floorplans

363 King is currently subdivided into two suites, A and B.

▶ 363-A

▶ 363-B

DOWNTOWN QUICK FACTS

1.5 miles of marquee retail from Broad to Spring Street

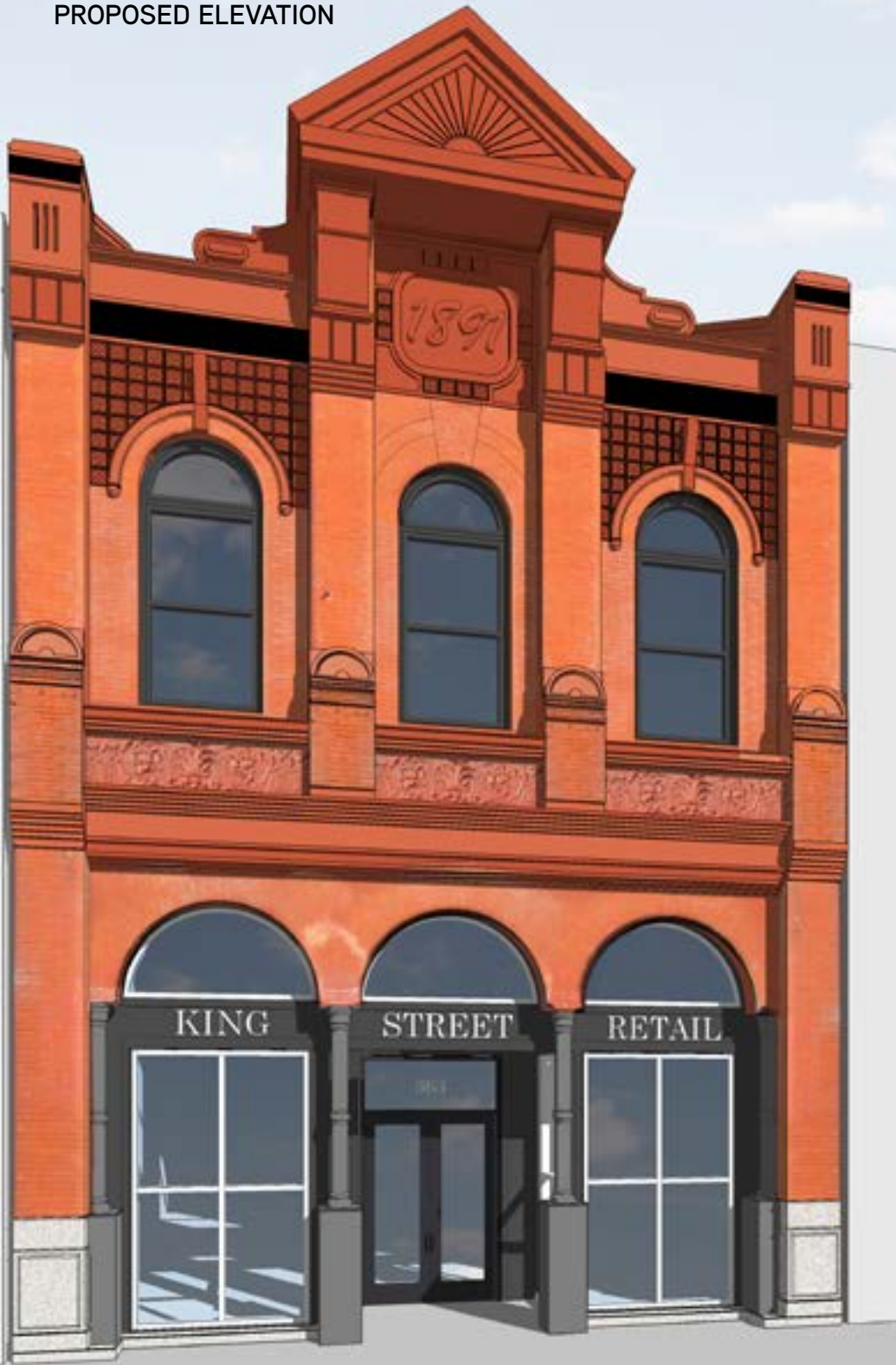
200+ local, regional and national shops

5,000+ hotel rooms existing and under construction

Over 65 excellent dining options



## PROPOSED ELEVATION



**FOR MORE INFORMATION,  
PLEASE CONTACT:**

**ELYSE WELCH, CCIM**

Brokerage Associate  
+1 843 720 7508  
[elyse.welch@colliers.com](mailto:elyse.welch@colliers.com)

**JOHN ORR, CCIM**

Vice President  
+1 843 720 7504  
[john.orr@colliers.com](mailto:john.orr@colliers.com)

**DANIEL PELLEGRINO**

Senior Brokerage Associate  
+1 843 720 7507  
[daniel.pellegrino@colliers.com](mailto:daniel.pellegrino@colliers.com)

**COLLIERS INTERNATIONAL**

25 Calhoun Street, Suite 220  
+1 843 723 1202  
[www.colliers.com/southcarolina](http://www.colliers.com/southcarolina)



This document has been prepared by Colliers International and Owner for advertising and general information only. Colliers International and Owner make no guarantees, representations or warranties of any kind, expressed or implied, regarding the information including, but not limited to, warranties of content, accuracy and reliability. Any interested party should undertake their own inquiries as to the accuracy of the information. Colliers International and Owner exclude unequivocally all inferred or implied terms, conditions and warranties arising out of this document and excludes all liability for loss and damages arising there from. This publication is the copyrighted property of Colliers International and/or its licensor(s). ©2017. All rights reserved.

View virtual floorplans



363-A



363-B