

Sandcastle

- Sale Price: \$1,150,000 (\$85.18 / SF)
- 13,500 SF stand-alone building
- 0.64 Acre Lot
- Full Kitchen Setup
- Fantastic location off 500 West
- Close proximity to area restaurants and grocery stores
- Convenient access to I-15

Ryan Flint
+1 801 814 9632
ryan.flint@colliers.com



Colliers International
111 Main Street | Suite 2200
Salt Lake City, UT 84111
P: +1 801 947 8300

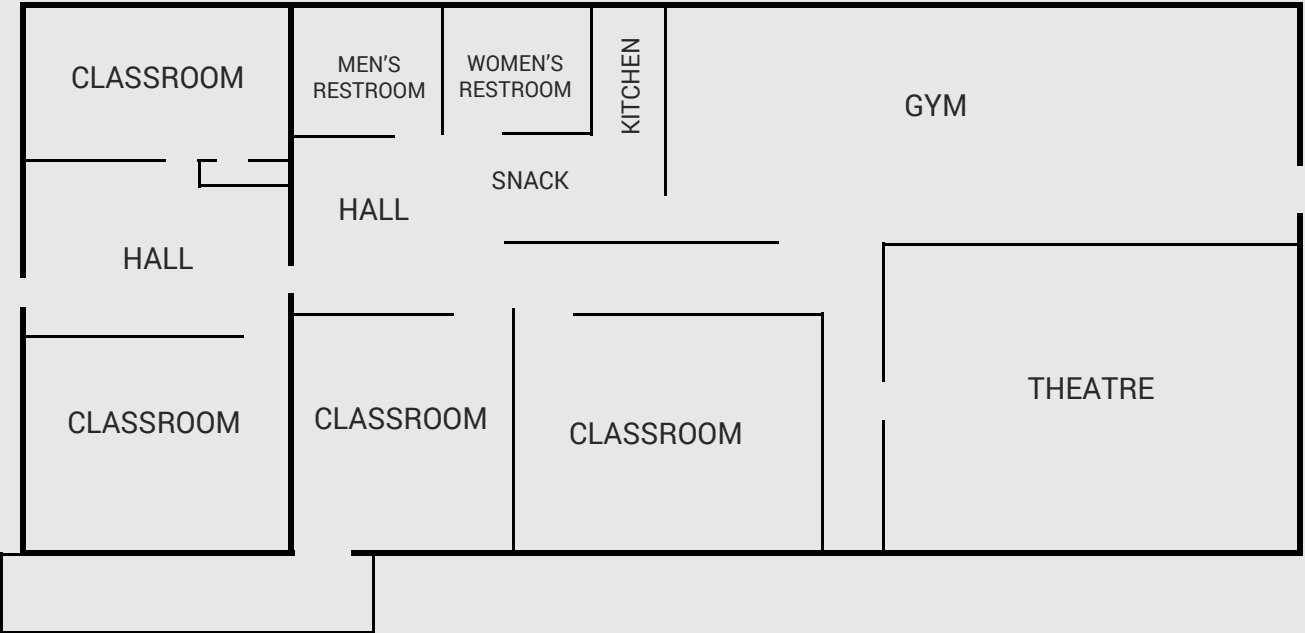
Colliers International
111 Main Street | Suite 2200
Salt Lake City, UT 84111
P: +1 801 947 8300



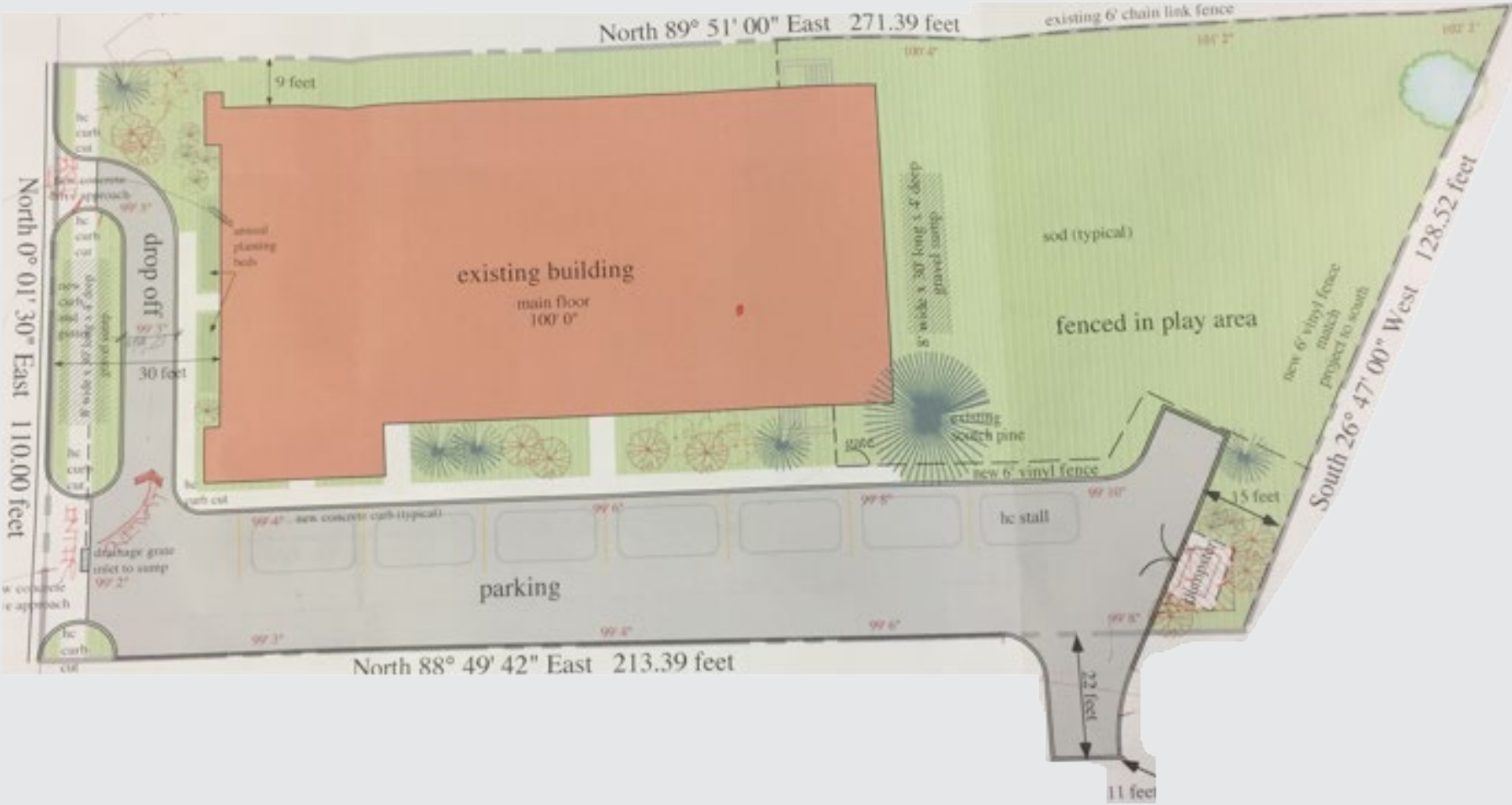
Accelerating success

Ryan Flint
+1 801 814 9632
ryan.flint@colliers.com

FLOOR PLAN



SIT PLAN



Bountiful, Utah is a quiet but vibrant town located just a short drive north of the bustling state Capitol, Salt Lake City. If you are looking for a place to grow your business, Bountiful offers the perfect mix of small-town living with close-proximity to all Salt Lake City has to offer by way of conference centers, dining, entertainment, outdoor recreation, and so much more. Bountiful mixes the best parts of work and leisure living, ensuring employees and clients experience the best of Utah.



Colliers International
111 Main Street | Suite 2200
Salt Lake City, UT 84111
P: +1 801 947 8300