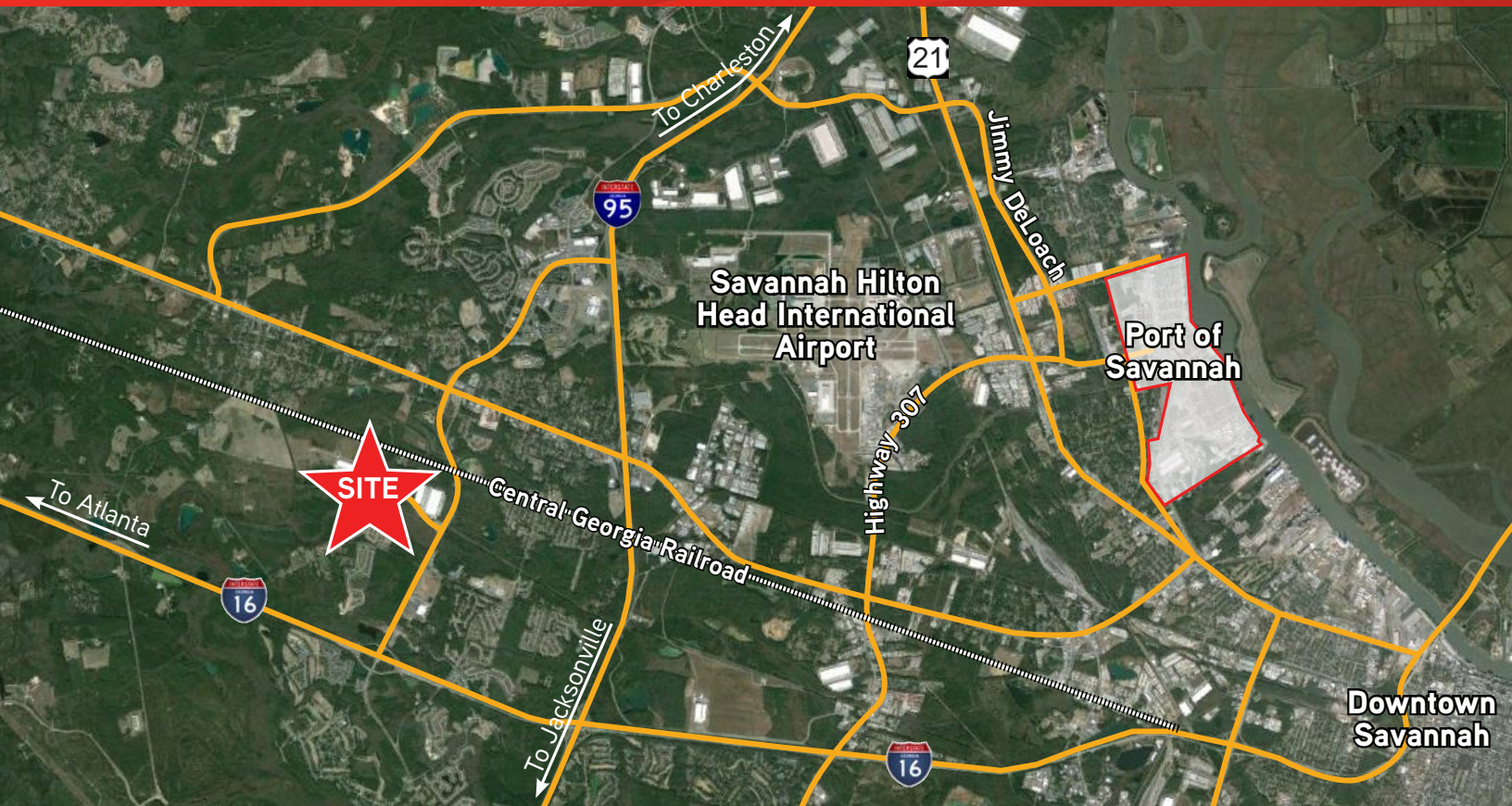


FOR SALE > ±9.967 ACRE INDUSTRIAL LOT



Morgan Center - Industrial Lot

S.H. MORGAN PARKWAY, POOLER, GA



Property Highlights

- > ±9.967 acre industrial lot available for sale
- > Strategically located along Pooler Pkwy between Pine Barren Road and US Hwy 80, one mile North of I-16
- > Easy access to Savannah International Airport, Georgia Ports Authority, I-95 and I-16
- > Part of a ±1,300-acre mixed-use planned development
- > Municipal water and sewer
- > Protective covenants



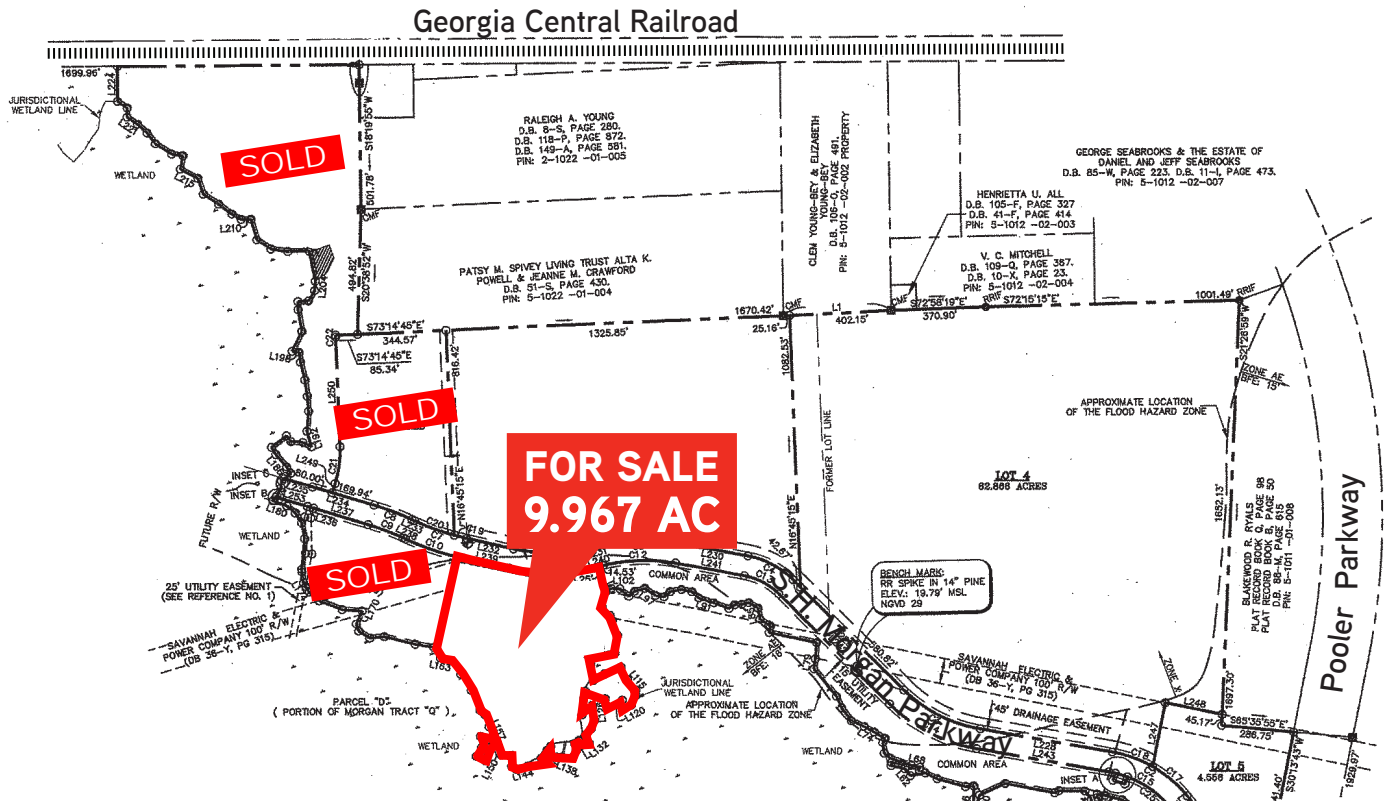
CLIFF DALES, SIOR
912 662 8009
SAVANNAH, GA
cliff.dales@colliers.com

COLLIERS INTERNATIONAL
545 E. York Street
Savannah, GA 31401
www.colliers.com/savannah

FOR SALE > ±9.967 ACRE INDUSTRIAL LOT

Morgan Center - Industrial Lot

S.H. MORGAN PARKWAY, POOLER, GA



Availability

SITE	SIZE	PRICE
Lot 6B	±9.967 AC	\$55,000/Acre

Location

- > ±10.3 miles from the Georgia Ports Authority's main gate
- > ±2.0 miles from I-16
- > ±4.3 miles from I-95

Contact Us

CLIFF DALES, SIOR
912 662 8009
SAVANNAH, GA
cliff.dales@colliers.com

COLLIERS INTERNATIONAL
545 E. York Street
Savannah, GA 31401
www.colliers.com/savannah

The information contained herein has been obtained from sources deemed reliable. While every reasonable effort has been made to ensure its accuracy, we cannot guarantee it. No responsibility is assumed for any inaccuracies. Readers are encouraged to consult their professional advisers prior to acting on any of the material contained in this report.

