

50 Rawls Rd, Des Plaines, IL



ML REALTY  
PARTNERS



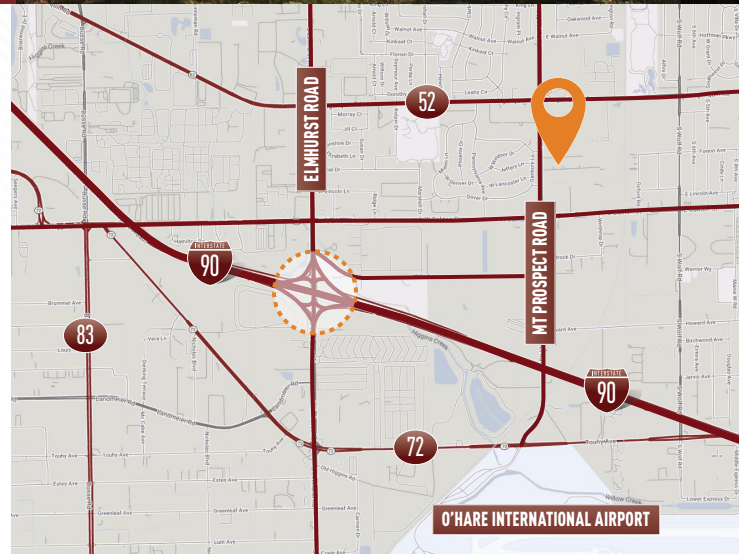
**22,000 SF AVAILABLE**

## Building Specifications

Building Size:	38,144 SF
Available:	22,000 SF
Office:	2,540 SF
Clear Height:	18'
Loading:	2 Interior Docks, 1 Drive-In
Electric:	800 Amps, 120/208 Volts
Lighting:	LED
Car Parking:	29 Spaces
Column Spacing:	36' x 38'
Sprinkler System:	Wet

## Building Features

- › High image, corporate setting
- › Close proximity to O'Hare International Airport
- › Access to I-90 via full interchange at Elmhurst Road



For More Information Contact



**JOHN D'ORAZIO**  
847-384-2823  
john.dorazio@colliers.com

**JONATHAN KOHN**  
847-698-8279  
jonathan.kohn@colliers.com

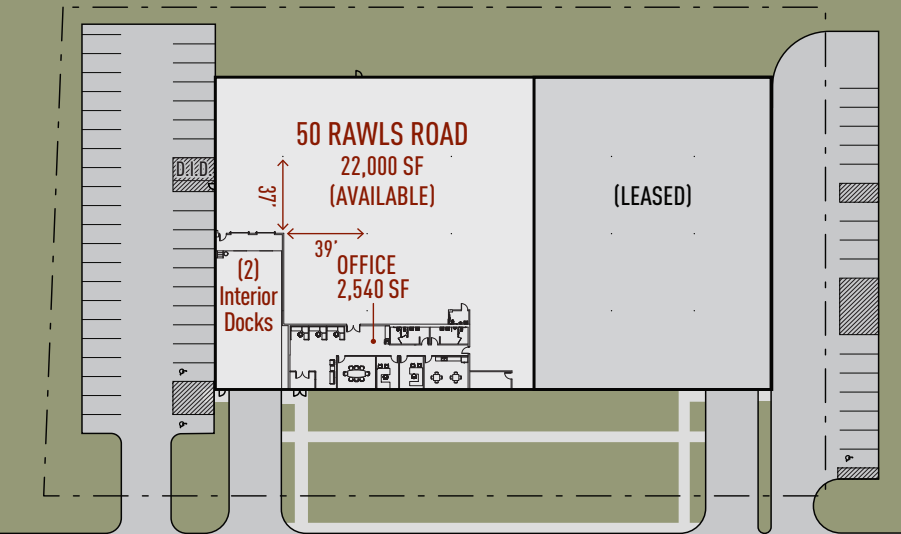
**TOMMY KARNIG**  
847-384-2830  
tommy.karnig@colliers.com

Owner:  
ML Realty Partners \\\ One Pierce Place, Suite 450, Itasca, Illinois 60143 \\\ 630-250-2900  
Information contained herein is subject to change and verification, and no liability for errors or omissions is assumed. © 2026 All Rights Reserved. ML Realty Partners

# 50 Rawls Rd, Des Plaines, IL

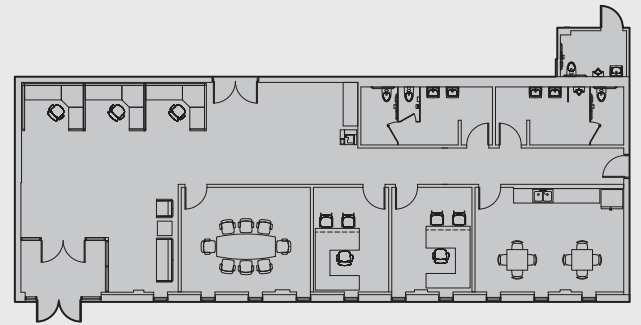


## Master Plan Rendering



↑ NORTH

## Full Office Build: Schematic Layout



↑ NORTH

