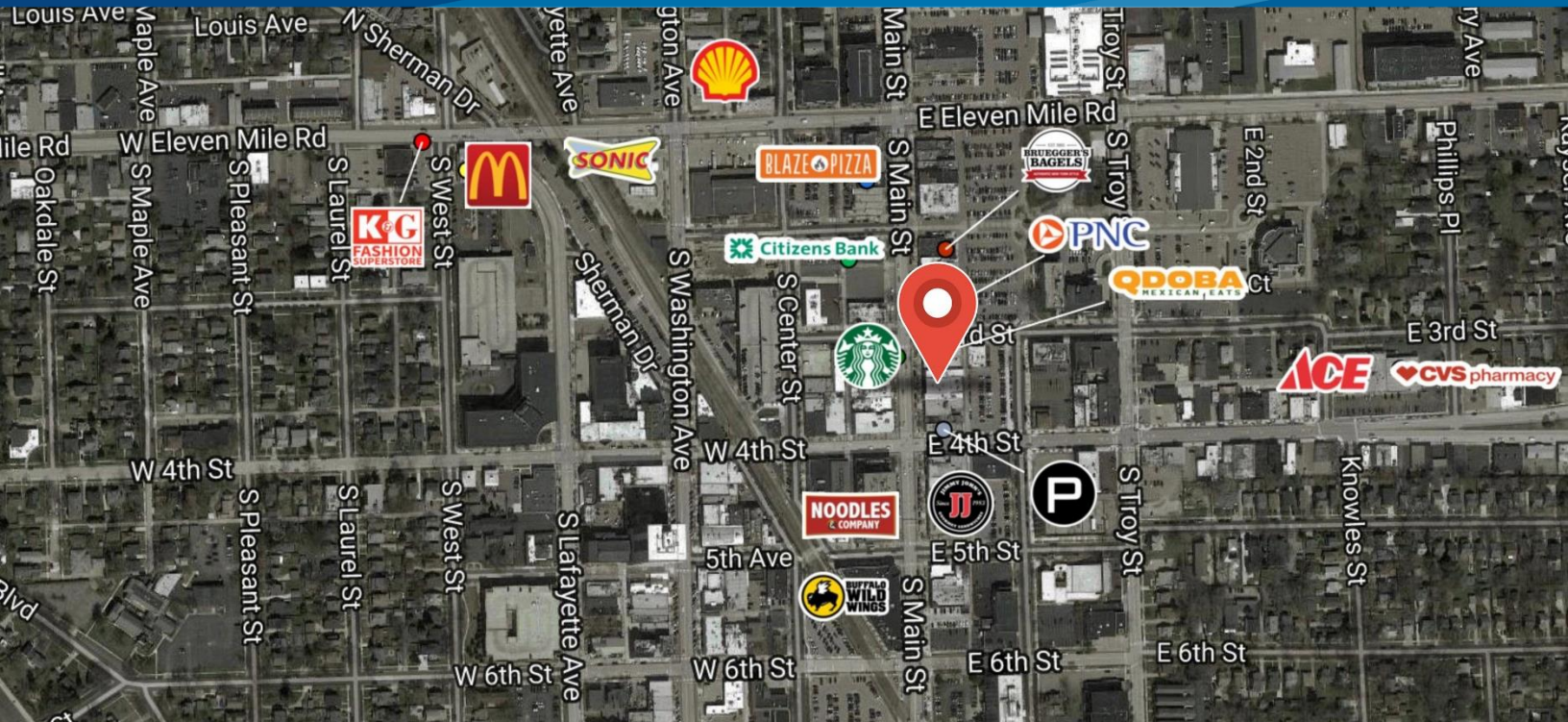


FOR SALE OR LEASE > RETAIL / OFFICE

DOWNTOWN ROYAL OAK AVAILABILITY



309 SOUTH MAIN STREET | ROYAL OAK, MICHIGAN



GREAT OWNER OPERATOR OPPORTUNITY

> PROPERTY HIGHLIGHTS

- 2,500 SF For Lease or 5,000 SF Freestanding Building For Sale
- On East Side of Main Street Between Third & Fourth Streets
- Two-Story Building with Long Term Tenant on Second Floor

> DEMOGRAPHICS

	1 MILE	3 MILE	5 MILE
POPULATION	18,042	150,861	363,983
AVG. INCOME	\$108,466	\$85,247	\$77,301
HOUSEHOLDS	9,172	69,491	160,107

COLLIERS INTERNATIONAL
 2 Corporate Drive | Suite 300
 Southfield, Michigan 48076

For More Information Call:

BEN HUBERT

PHONE 248 540 1000 EXT 1864
 EMAIL ben.hubert@colliers.com



BEN ROSENZWEIG

PHONE 248 540 1000 EXT 1866
 EMAIL ben.rosenzweig@colliers.com



colliers.com/detroit



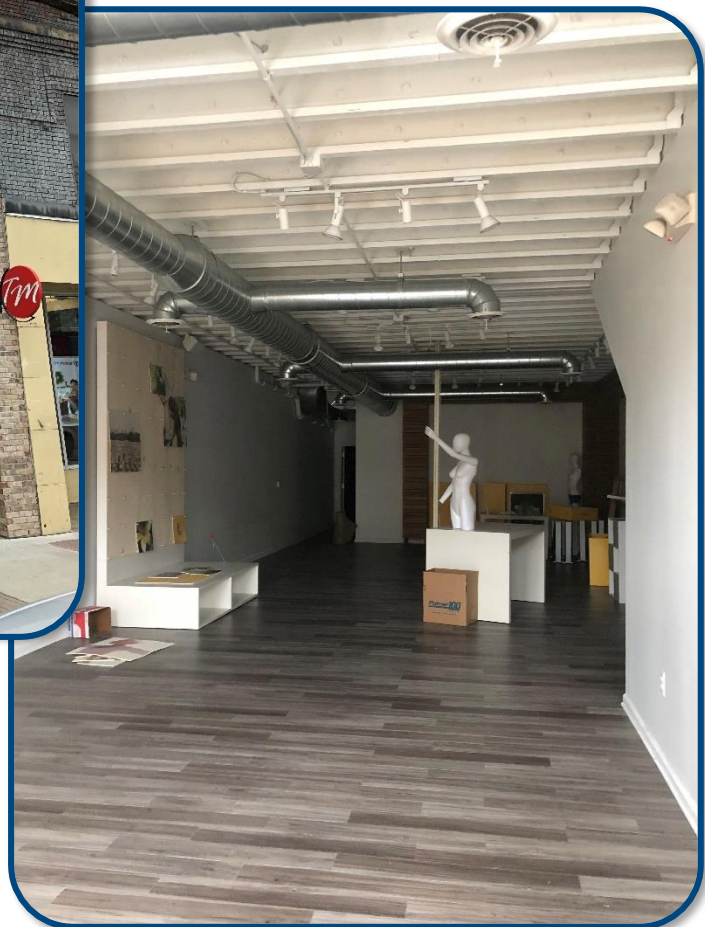
FOR SALE OR LEASE > RETAIL / OFFICE

DOWNTOWN ROYAL OAK AVAILABILITY

309 SOUTH MAIN STREET | ROYAL OAK, MICHIGAN



> PROPERTY PHOTOS



BEN HUBERT

PHONE 248 540 1000 EXT 1864
EMAIL ben.hubert@colliers.com



BEN ROSENZWEIG

PHONE 248 540 1000 EXT 1866
EMAIL ben.rosenzweig@colliers.com

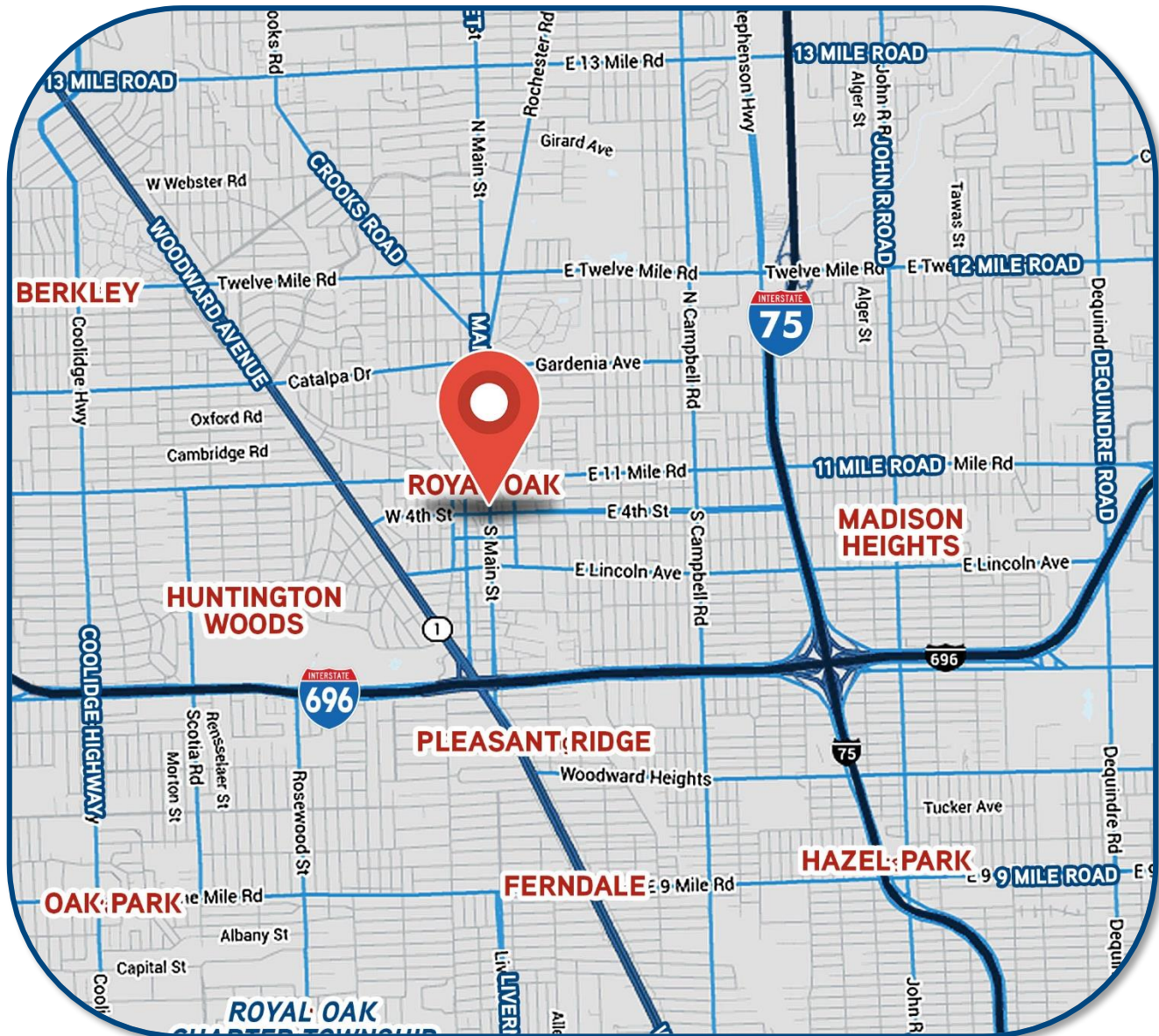
FOR SALE OR LEASE > RETAIL / OFFICE

DOWNTOWN ROYAL OAK AVAILABILITY

309 SOUTH MAIN STREET | ROYAL OAK, MICHIGAN



> LOCATION MAP



BEN HUBERT

PHONE 248 540 1000 EXT 1864
EMAIL ben.hubert@colliers.com



BEN ROSENZWEIG

PHONE 248 540 1000 EXT 1866
EMAIL ben.rosenzweig@colliers.com

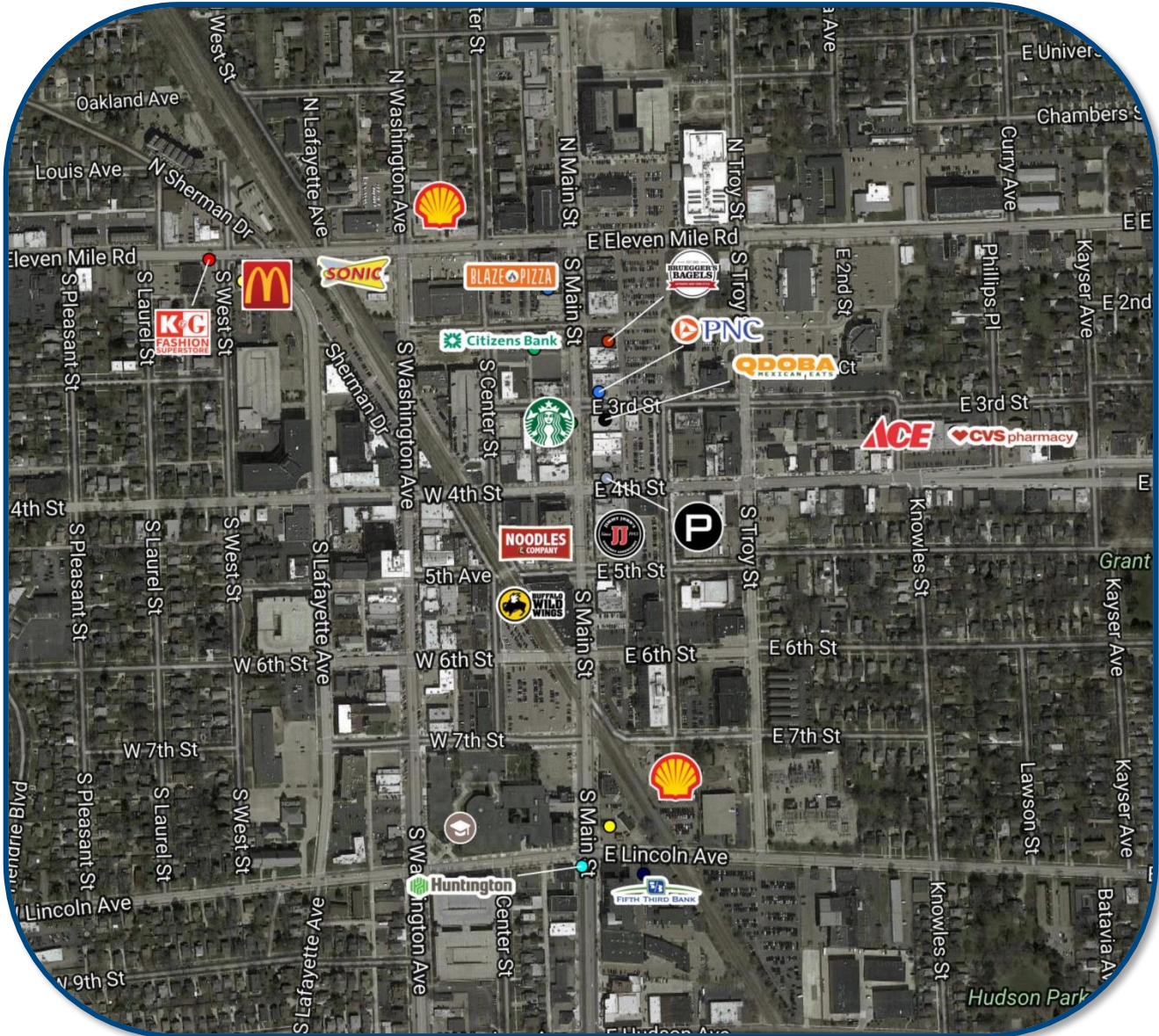
FOR SALE OR LEASE > RETAIL / OFFICE

DOWNTOWN ROYAL OAK AVAILABILITY

309 SOUTH MAIN STREET | ROYAL OAK, MICHIGAN



> AREA MERCHANT MAP



BEN HUBERT

PHONE 248 540 1000 EXT 1864

EMAIL ben.hubert@colliers.com



BEN ROSENZWEIG

PHONE 248 540 1000 EXT 1866

EMAIL ben.rosenzweig@colliers.com

SUMMARY PROFILE

2000-2010 Census, 2017 Estimates with 2022 Projections
 Calculated using Weighted Block Centroid from Block Groups



Lat/Lon: 42.4878/-83.1438

RS1

309 S Main St		1 mi radius	3 mi radius	5 mi radius
Royal Oak, MI 48067				
POPULATION	2017 Estimated Population	18,042	150,861	363,983
	2022 Projected Population	18,385	154,356	370,113
	2010 Census Population	16,974	145,704	359,390
	2000 Census Population	17,058	155,732	393,554
	Projected Annual Growth 2017 to 2022	0.4%	0.5%	0.3%
	Historical Annual Growth 2000 to 2017	0.3%	-0.2%	-0.4%
	2017 Median Age	35.6	37.6	39.4
HOUSEHOLDS	2017 Estimated Households	9,172	69,491	160,107
	2022 Projected Households	9,485	72,085	165,526
	2010 Census Households	8,500	65,395	154,346
	2000 Census Households	8,379	67,574	164,266
	Projected Annual Growth 2017 to 2022	0.7%	0.7%	0.7%
	Historical Annual Growth 2000 to 2017	0.6%	0.2%	-0.1%
RACE AND ETHNICITY	2017 Estimated White	88.3%	78.8%	60.0%
	2017 Estimated Black or African American	5.0%	14.6%	32.1%
	2017 Estimated Asian or Pacific Islander	3.6%	3.0%	4.4%
	2017 Estimated American Indian or Native Alaskan	0.2%	0.3%	0.3%
	2017 Estimated Other Races	2.9%	3.2%	3.2%
	2017 Estimated Hispanic	3.1%	2.9%	2.5%
INCOME	2017 Estimated Average Household Income	\$108,466	\$85,247	\$77,301
	2017 Estimated Median Household Income	\$79,197	\$67,413	\$59,983
	2017 Estimated Per Capita Income	\$55,342	\$39,322	\$34,115
EDUCATION (AGE 25+)	2017 Estimated Elementary (Grade Level 0 to 8)	0.9%	2.2%	2.9%
	2017 Estimated Some High School (Grade Level 9 to 11)	2.9%	4.3%	6.0%
	2017 Estimated High School Graduate	13.7%	21.0%	24.4%
	2017 Estimated Some College	16.1%	21.8%	22.8%
	2017 Estimated Associates Degree Only	5.8%	7.6%	7.7%
	2017 Estimated Bachelors Degree Only	34.0%	26.3%	21.5%
	2017 Estimated Graduate Degree	26.5%	16.7%	14.5%
BUSINESS	2017 Estimated Total Businesses	1,469	6,333	18,983
	2017 Estimated Total Employees	10,868	55,086	194,493
	2017 Estimated Employee Population per Business	7.4	8.7	10.2
	2017 Estimated Residential Population per Business	12.3	23.8	19.2

This report was produced using data from private and government sources deemed to be reliable. The information herein is provided without representation or warranty.