

Industrial For Lease or Sale

4225 S. 500 W. | Murray, UT



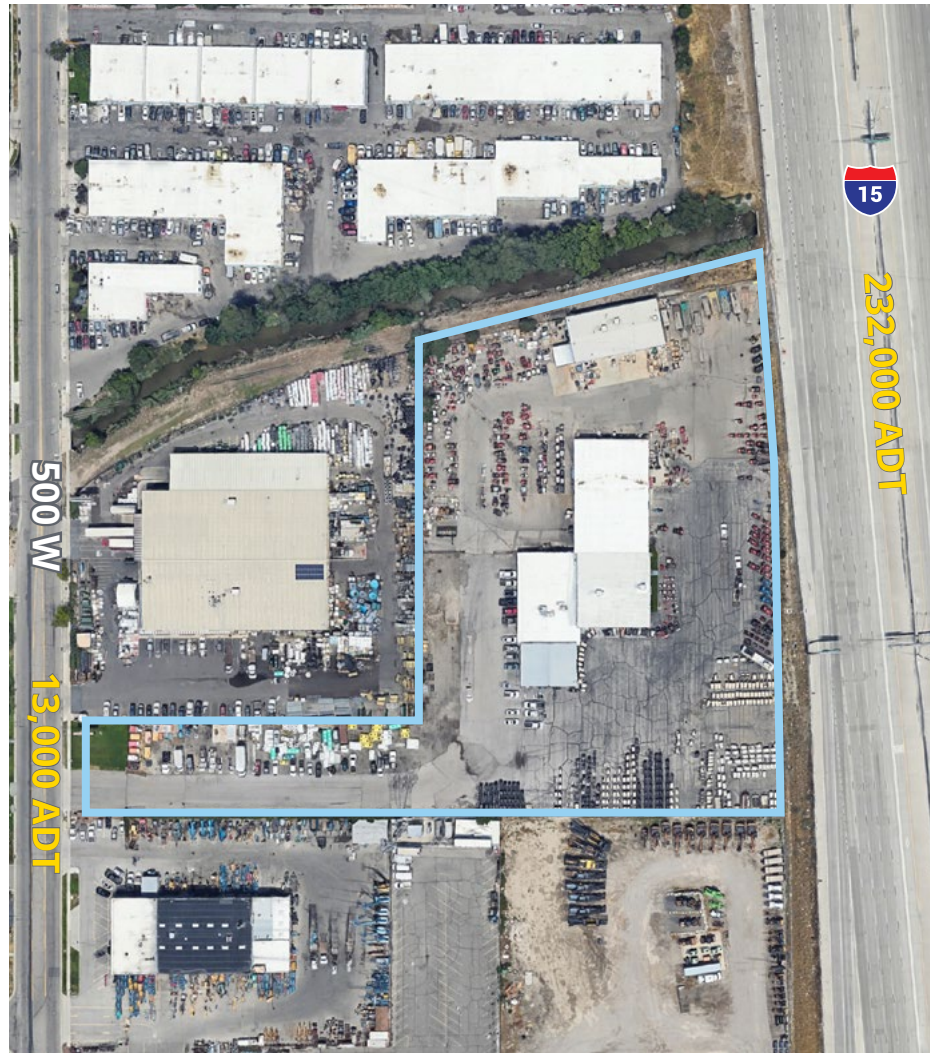
Central Location, Less than Five Minutes from I-15

Property Features

5.78 Acres

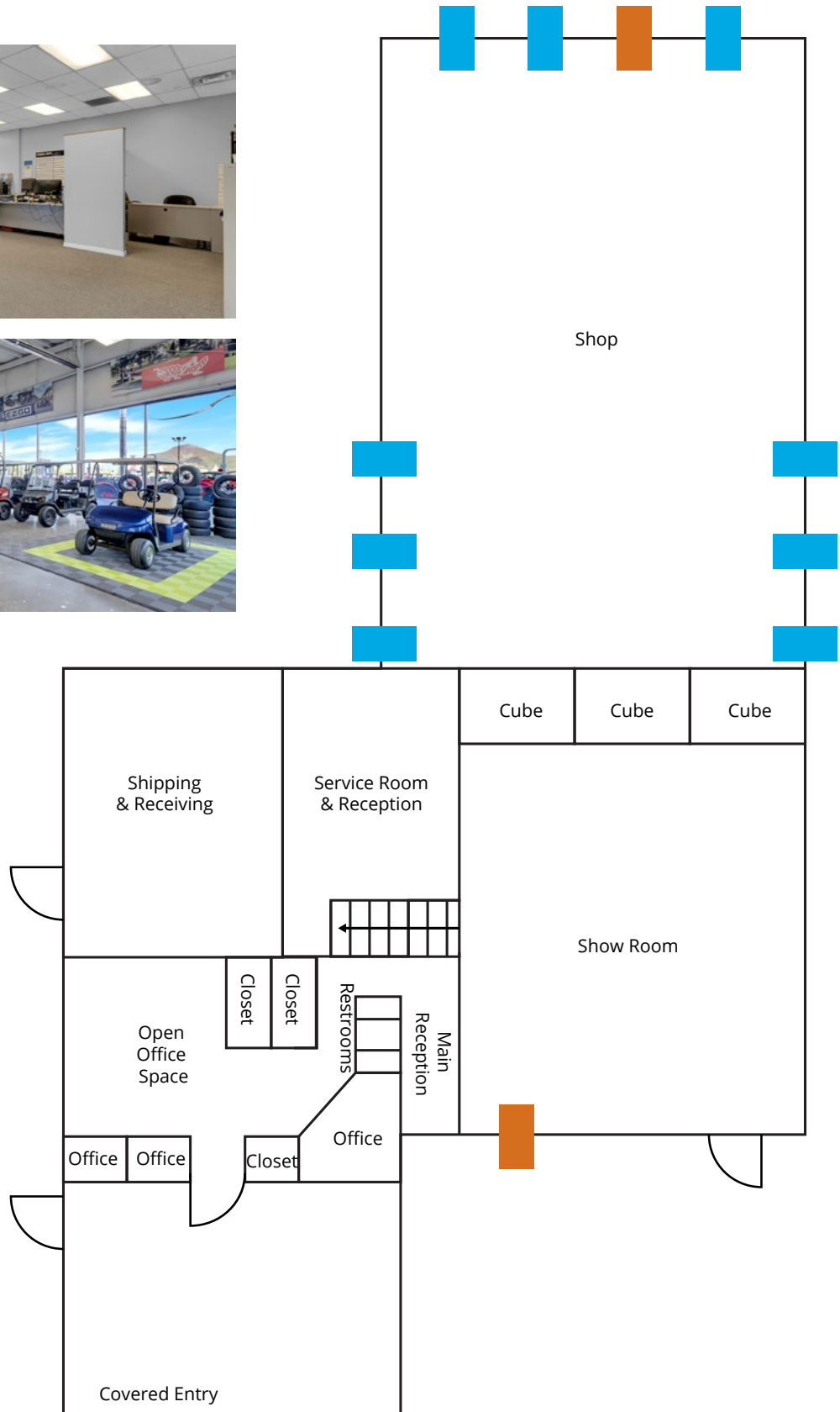
±28,000 Total SF

- Main building:
 - 12,040 SF warehouse
 - 5,400 SF office
 - 5,560 SF showroom
 - 10 GL doors
 - 3 drive thru bays
 - ± 1,000 SF Mezzanine
 - Not included in total SF
- Standalone Shop:
 - 4,500 SF warehouse
 - 500 SF office
 - 4 GL doors
- Zoning: Manufacturing General
- High visibility with 600± feet of I-15 frontage
- Double sided billboard sign
- Less than five (5) minutes to I-15
- Lease Expiration: October 2026




Floor Plan

Main Building

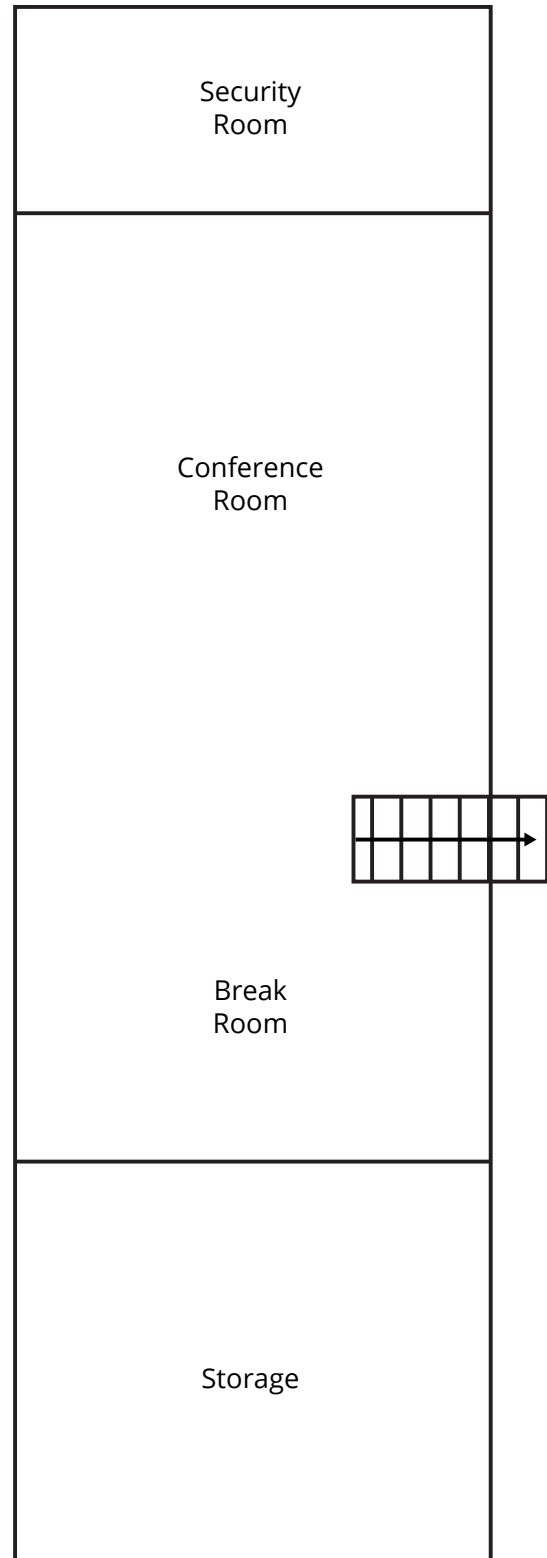
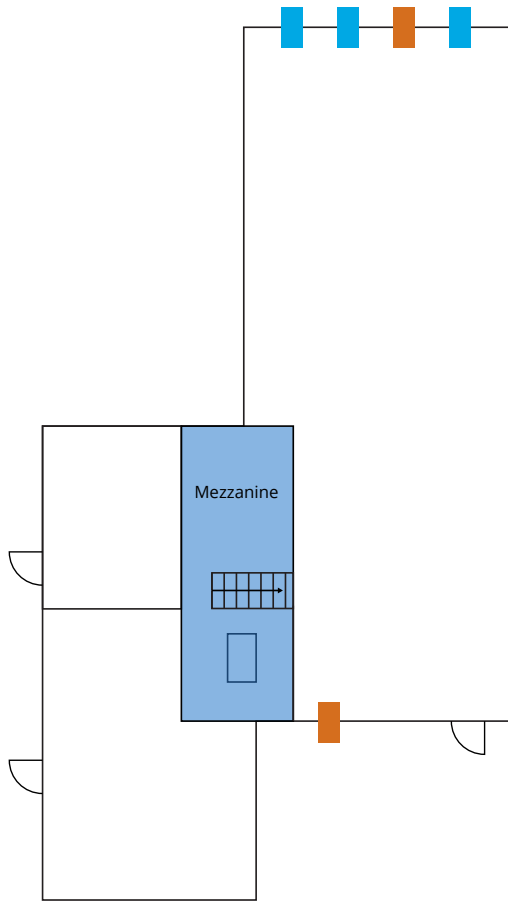


 14' x 14' Drive Thru Doors

 14' x 12' Ground Level Doors

Floor Plan

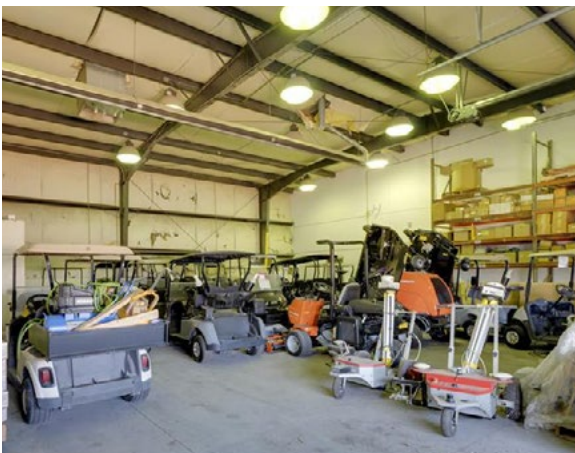
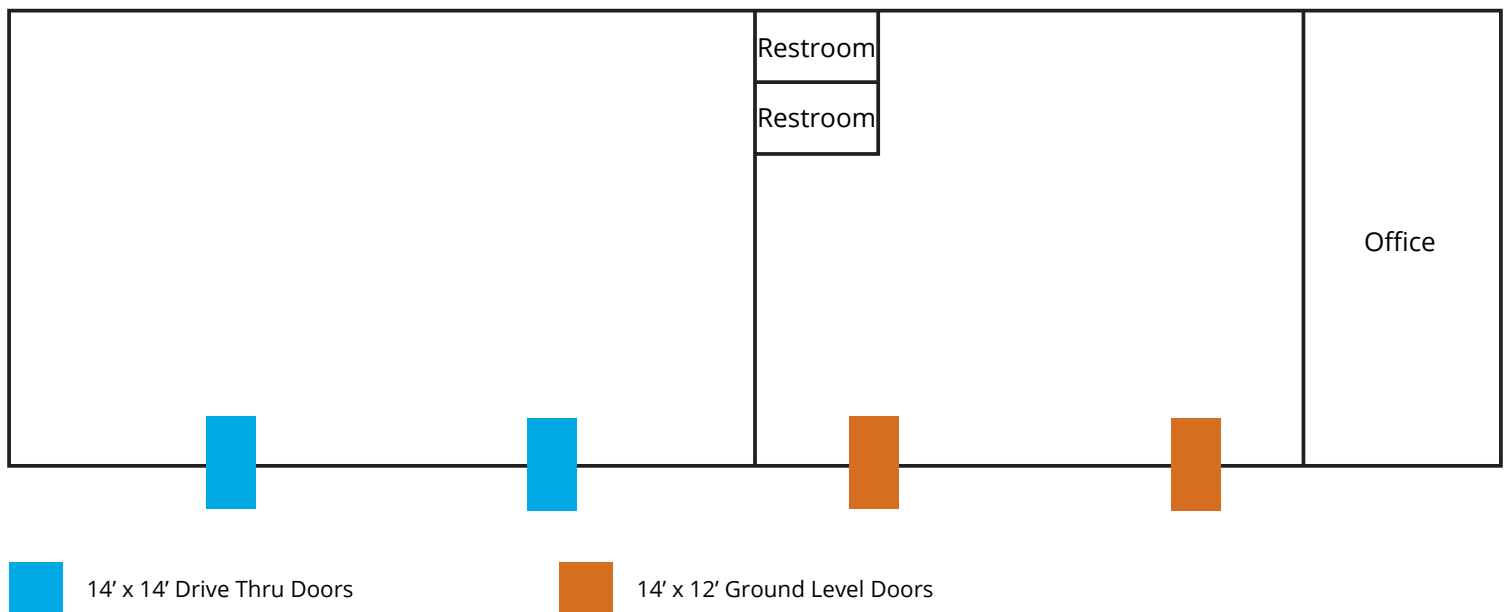
Mezzanine

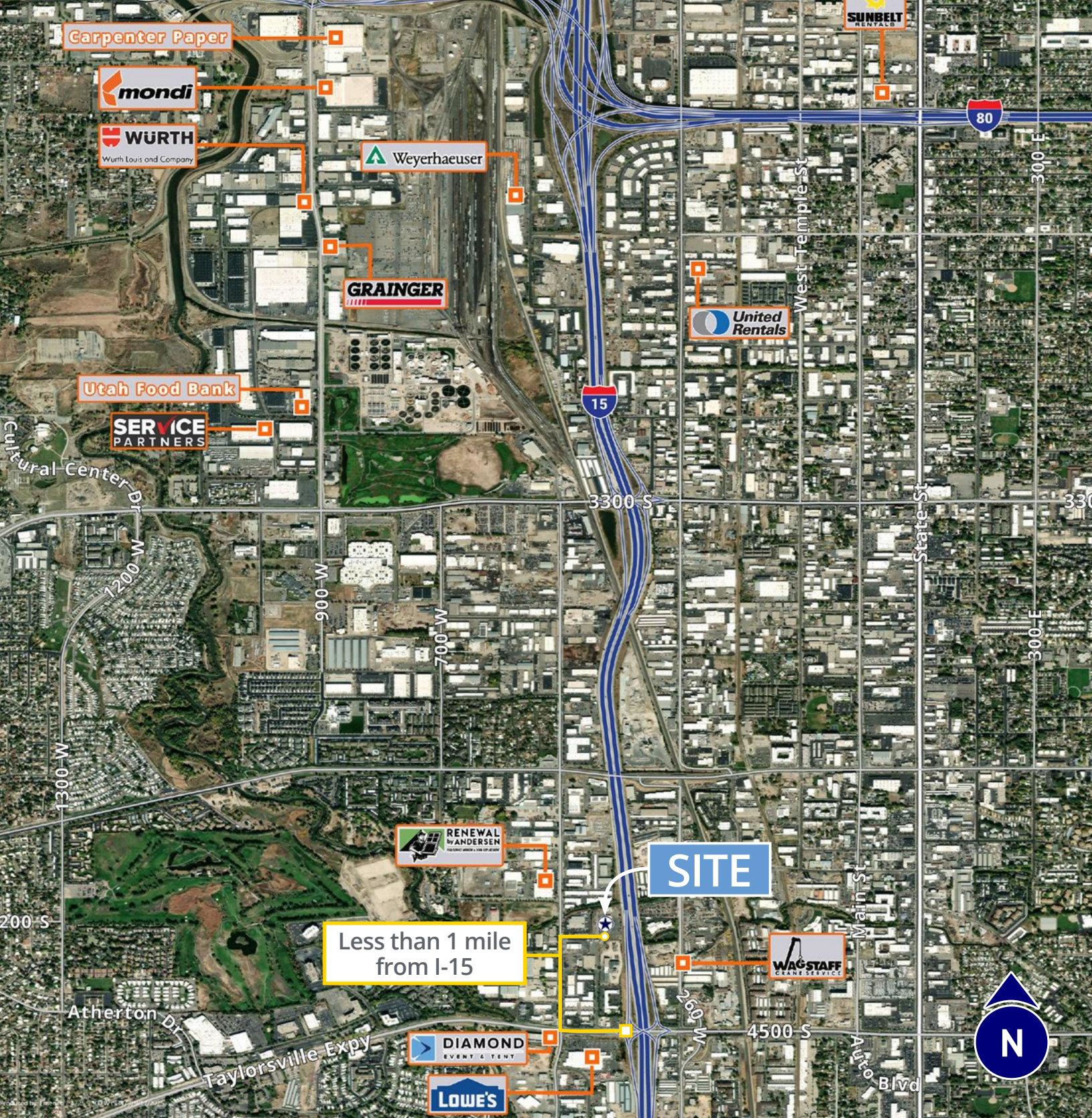


Floor Plan



Standalone shop





Ethan Wallace
Associate
+1 901 497 0790
ethan.wallace@colliers.com

Rusty Bollow, SIOR, CCIM, MRED
Executive Vice President
+1 801 633 4800
rusty.bollow@colliers.com

Bobby Stevens, SIOR
Senior Vice President
+1 801 696 9617
bobby.stevens@colliers.com

Colliers
6440 S. Millrock Dr., Suite 500
Salt Lake City, UT 84121
Main: +1 801 947 8300
colliers.com

This document has been prepared by Colliers International for advertising and general information only. Colliers International makes no guarantees, representations or warranties of any kind, expressed or implied, regarding the information including, but not limited to, warranties of content, accuracy and reliability. Any interested party should undertake their own inquiries as to the accuracy of the information. Colliers International excludes unequivocally all inferred or implied terms, conditions and warranties arising out of this document and excludes all liability for loss and damages arising there from. This publication is the copyrighted property of Colliers International and/or its licensor(s). ©2025. All rights reserved.