



# UNIVERSITY OFFICE PARK

301 University Avenue, Suite 150 > Sacramento, California



FOR OFFICE LEASING >

**TOM WALCOTT, SIOR, CCIM**

Senior Vice President  
DIRECT +1 916 563 3002  
MOBILE +1 916 212 8414  
thomas.walcott@colliers.com

**JASON RUTHERFORD**

Senior Vice President  
DIRECT +1 916 563 3059  
MOBILE +1 916 717 4353  
jason.rutherford@colliers.com

## BUILDING HIGHLIGHTS >>

- > Sublease,  $\pm 4,500$  SF Available
- > Master lease expires August 31, 2021
- > Two-story,  $\pm 34,364$  SF, Class A office building on the corner of University Avenue and Park Center Drive
- > High profile location with tenant signage opportunities
- > Fully automated HVAC and building access controls
- > On-site shower and locker facilities
- > Parking: 3.5 spaces per 1,000
- > LEED Silver certified

This document has been prepared by Colliers International for advertising and general information only. Colliers International makes no guarantees, representations or warranties of any kind, expressed or implied, regarding the information including, but not limited to, warranties of content, accuracy and reliability. Any interested party should undertake their own inquiries as to the accuracy of the information. Colliers International excludes unequivocally all inferred or implied terms, conditions and warranties arising out of this document and excludes all liability for loss and damages arising there from. This publication is the copyrighted property of Colliers International and/or its licensor(s). ©2016. All rights reserved.



A DEVELOPMENT OF

**JACKSON**  
PROPERTIES, INC.

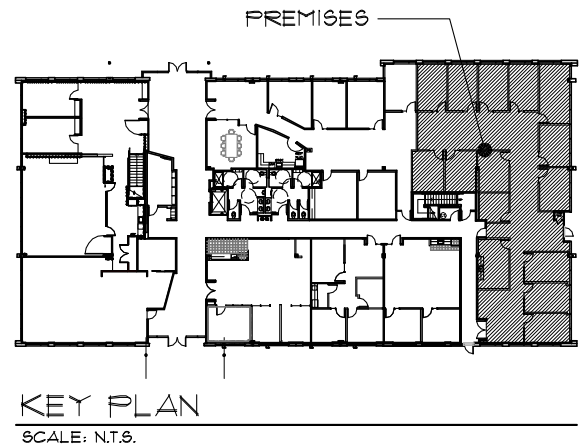
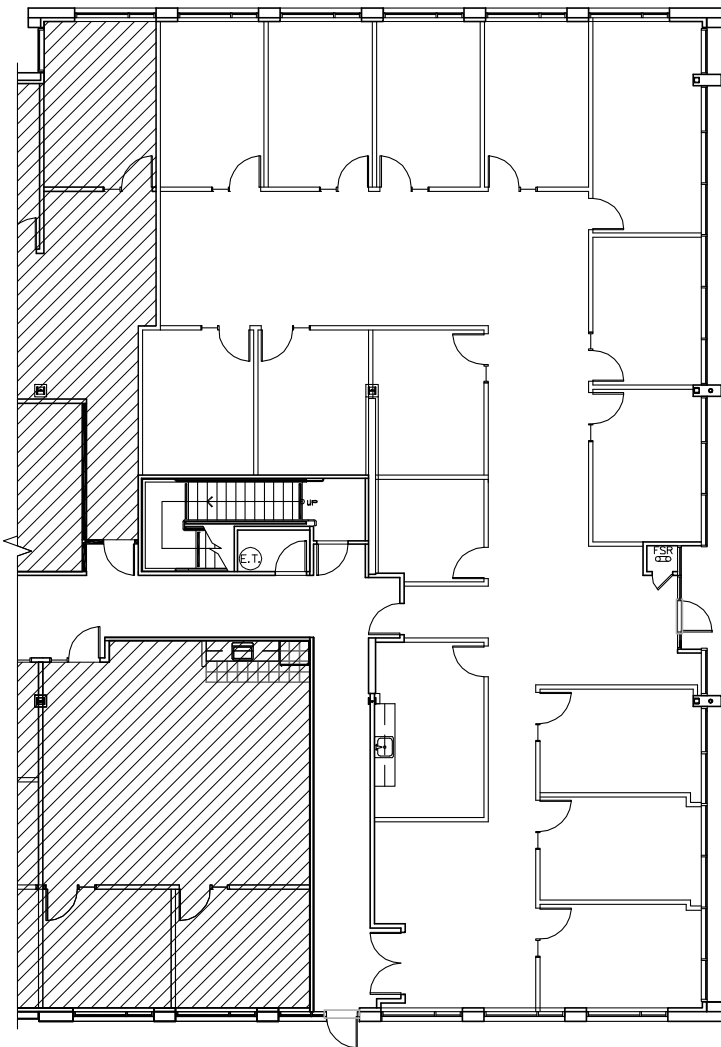


# UNIVERSITY OFFICE PARK

301 University Avenue, Suite 150 > Sacramento, California

## FLOOR PLAN

SUITE 150 > ±4,500 SF



FOR OFFICE LEASING >

### TOM WALCOTT, SIOR, CCIM

Senior Vice President

DIRECT +1 916 563 3002

MOBILE +1 916 212 8414

thomas.walcott@colliers.com

### JASON RUTHERFORD

Senior Vice President

DIRECT +1 916 563 3059

MOBILE +1 916 717 4353

jason.rutherford@colliers.com

