

FOR SALE

±6.9- & ±5.7-Acre Outparcels
Lexington County Industrial Park

Colliers
INTERNATIONAL



Opportunity

The ±12.6-acre property is located in the Lexington County Industrial Park off of Charleston Highway/US-321/US-21/US-176 in West Columbia, South Carolina. Located in the central part of South Carolina, and midway between Atlanta and Charlotte via I-20 and I-77, Lexington County has unparalleled access to markets and raw materials.

Zoning

- › Intensive Development

Parcels

- › 006898-02-048 & 007997-04-001

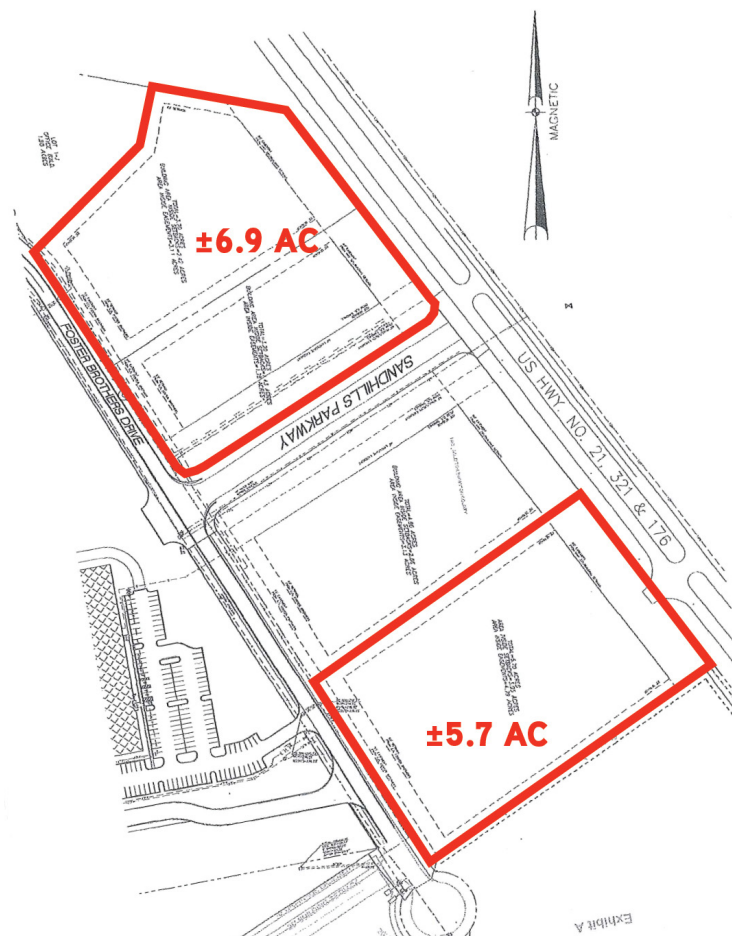
Utility Providers

- › Electric & Gas: SCE&G
- › Water & Sewer: City of Cayce
- › Telecommunications: AT&T

Price

- › For sale: \$1,134,000 (\$90,000/acre)

Plat



FOR SALE

±6.9 & ±5.7-Acre Outparcels
Lexington County Industrial Park



Location

The property is in a convenient location in Lexington County near the intersection of I-26 and I-77. Nearby industrial users include Nephron Pharmaceuticals, Amazon, The Home Depot, Republic National Distributing Company and Husqvarna.

Interstate Access

Located 0.7 miles from the intersection of I-26 and I-77

Airport & Port Access

- ±3 miles from Columbia Metropolitan Airport & UPS Air and Ground Hub
- ±106 miles from Charlotte Douglas International Airport
- ±98 miles from Charleston International Airport
- ±107 miles from Port of Charleston

Contact Us

CHUCK W. SALLEY, SIOR
803 401 4266 DIRECT
chuck.salley@colliers.com

DAVE MATHEWS, SIOR
803 401 4293 DIRECT
dave.mathews@colliers.com

THOMAS BEARD
803 401 4247 DIRECT
thomas.beard@colliers.com

COLLIERS INTERNATIONAL
1301 Gervais Street, Suite 600
Columbia, SC 29201
www.colliers.com/southcarolina

