


FOR LEASE

colliers.com/centralflorida  VIEW ONLINE

# 2699 Lee Road

WINTER PARK | FL

*Class A  
Professional &  
Office Suites in an  
unparalleled location*



Colliers International  
255 South Orange Avenue | Suite 1300  
Orlando, FL 32801  
P: 407 843 1723

**Robert Kellogg, CCIM**  
Executive Managing Director  
407 362 6163  
robert.kellogg@colliers.com

**A. Todd Davis, SIOR**  
Executive Managing Director  
407 362 6121  
todd.davis@colliers.com

**Colin Morrison**  
Senior Associate  
407 362 6153  
colin.morrison@colliers.com



## PROPERTY HIGHLIGHTS

- Excellent visibility on Lee Road in Winter Park
- Monument signage available
- Unparalleled location at a well traveled corner with excellent I-4 exposure along Lee road & Wymore road
- Ample on-site surface parking (4.0/1,000 SF)
- Close proximity to an abundant selection of retail and restaurant options including Winter Park Village, Whole Foods, and Trader Joe's retail plazas



## AVAILABILITY

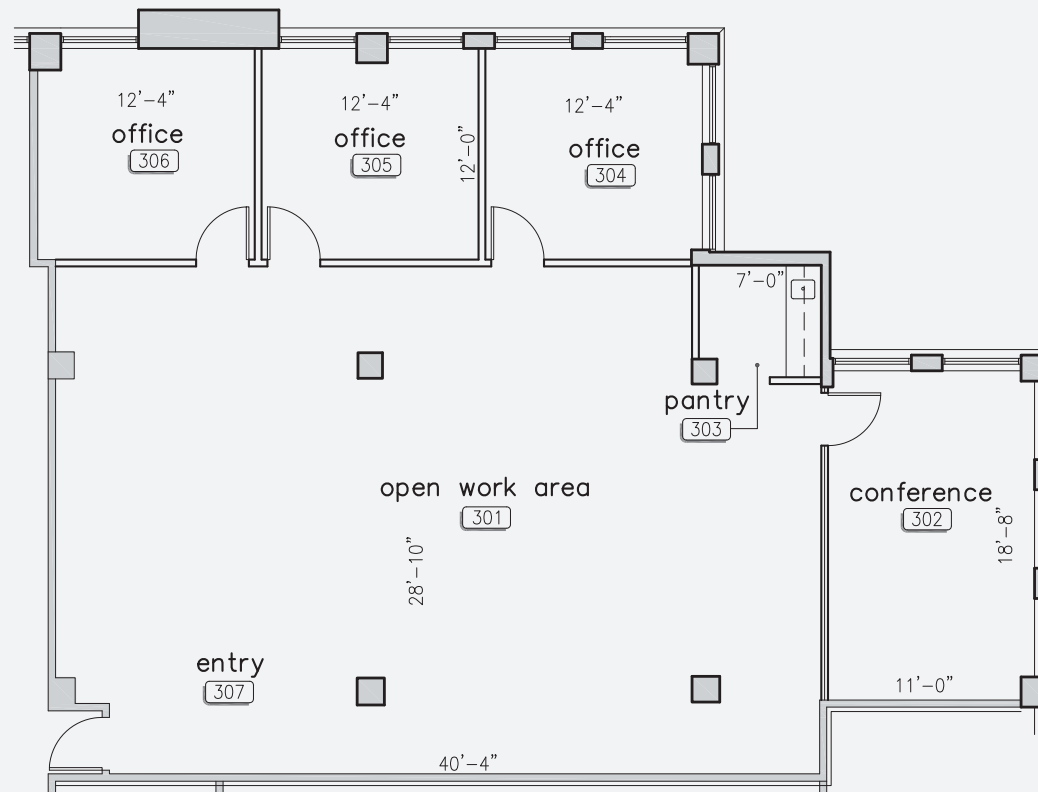
Suite	Available Space (SF)	Rate (per SF)	Date Available
300	2,197*	\$21.00	Now
302	4,260*	\$21.00	9/1/2018
304	2,534*	\$21.00	Now
400	14,155	\$21.00	4Q 2018
505	1,456	\$21.00	Now

\*Can be combined to 8,991 SF



1,456 - 14,155 - SF Available / \$21.00 SF Full Service

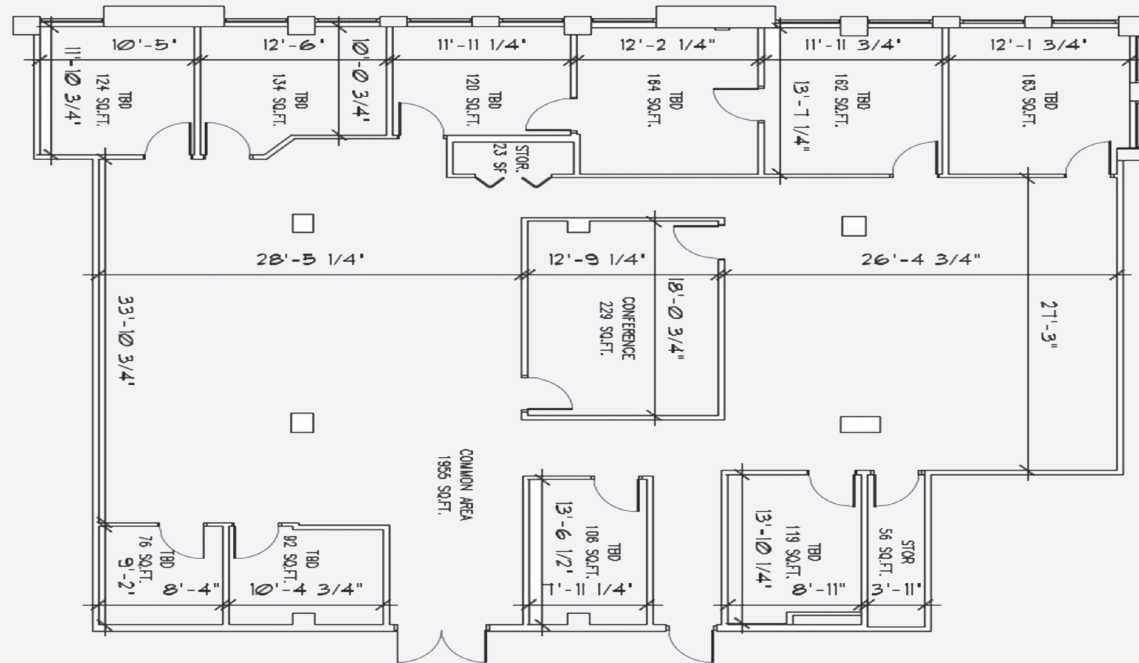
## FLOOR PLAN



## THIRD FLOOR AVAILABILITY

- Suite 300 - 2,197± SF

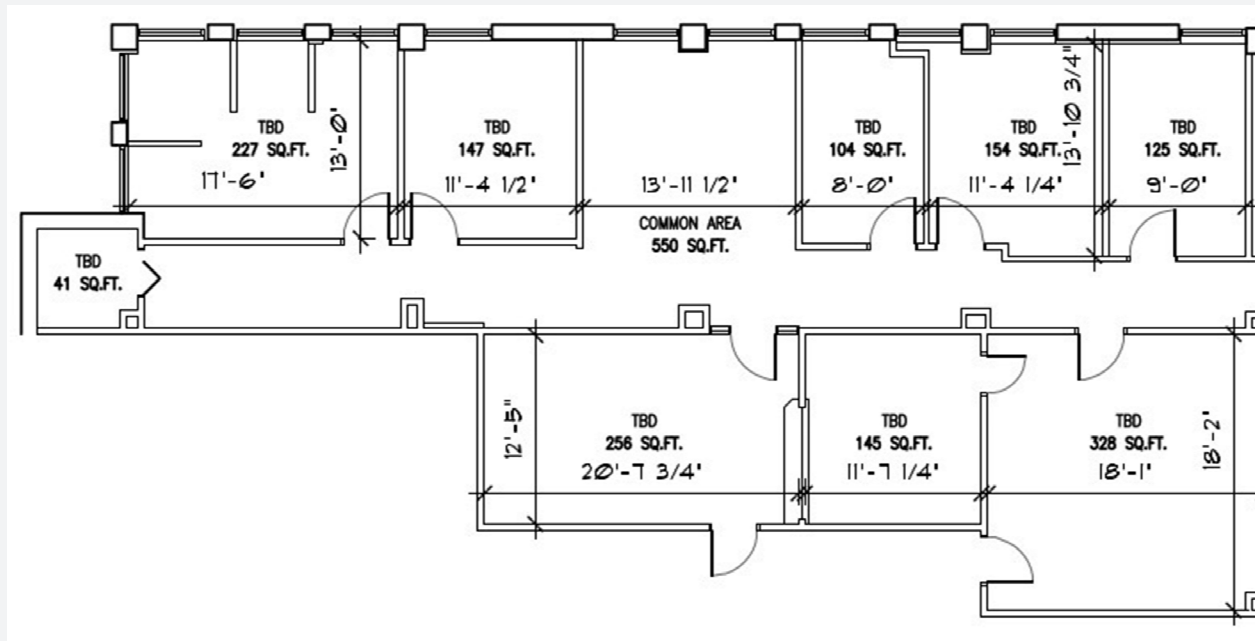
## FLOOR PLAN



## THIRD FLOOR AVAILABILITY

- Suite 302 - 4,260± SF

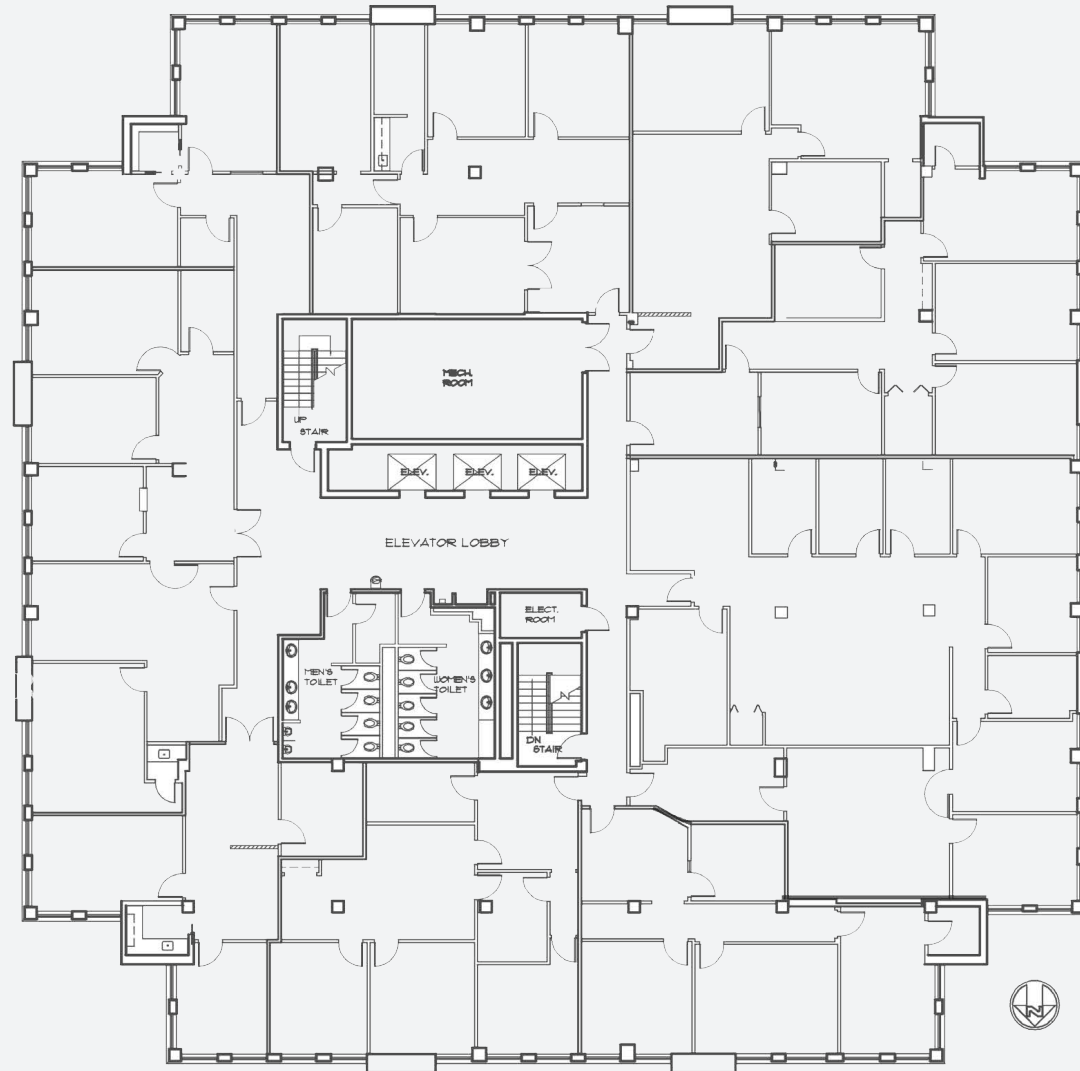
## FLOOR PLAN



## THIRD FLOOR AVAILABILITY

- Suite 304 - 2,534± SF

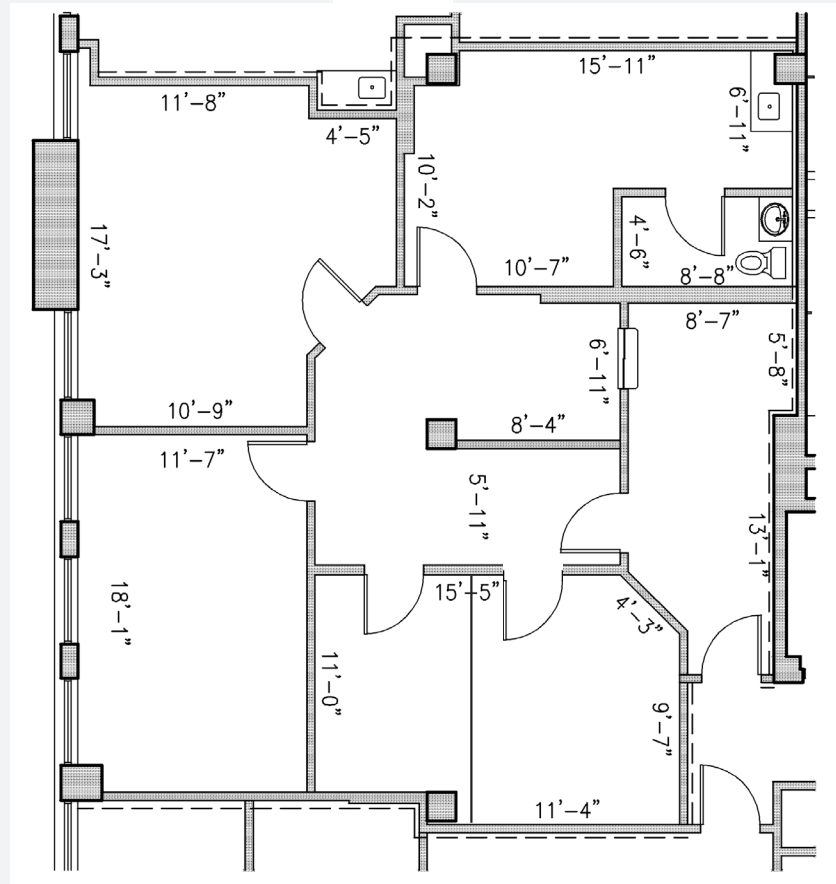
## FLOOR PLAN



## THIRD FLOOR AVAILABILITY

- Suite 400 - 14,155± SF

## FLOOR PLAN



## FIFTH FLOOR AVAILABILITY

- Suite 505 - 1,456± SF