

2699 LEE ROAD



FOR LEASE

2699 Lee Road
Winter Park, FL 32789

ROBERT KELLOGG, CCIM
407 362 6163
robert.kellogg@colliers.com

A. TODD DAVIS, SIOR, CCIM
407 362 6121
todd.davis@colliers.com

COLIN MORRISON
407 362 6153
colin.morrison@colliers.com



Key Features

- Available: 1,456 - 6,453 SF
- Lease Rate: Negotiable
- Unparalleled location at a well traveled corner with excellent I-4 exposure along Lee road & Wymore road

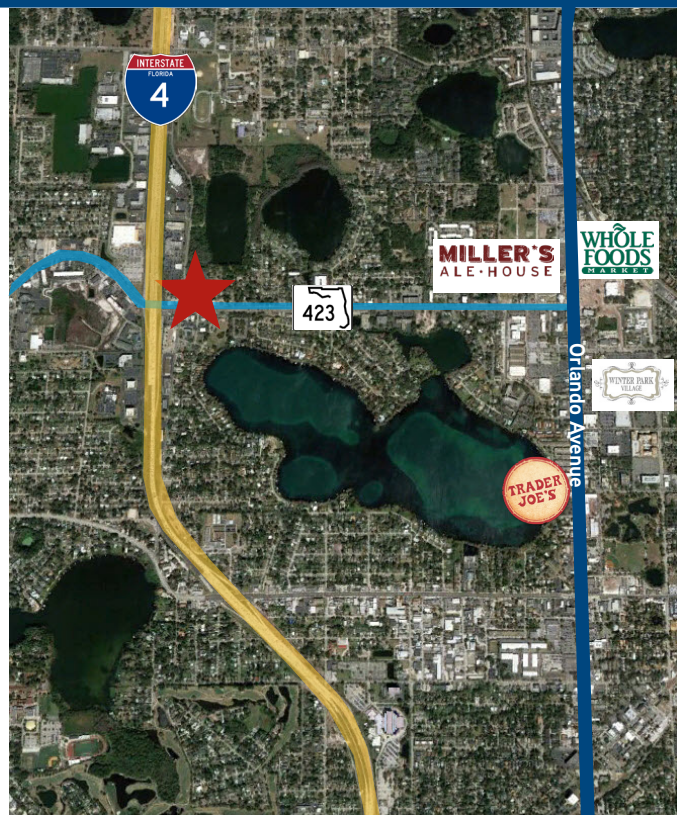


FOR LEASE > 2699 LEE ROAD

- > Monument signage available
- > Parking 4/1,000
- > Close proximity to an abundant selection of retail and restaurant options including Winter Park Village, Whole Foods, and Trader Joe's retail plazas

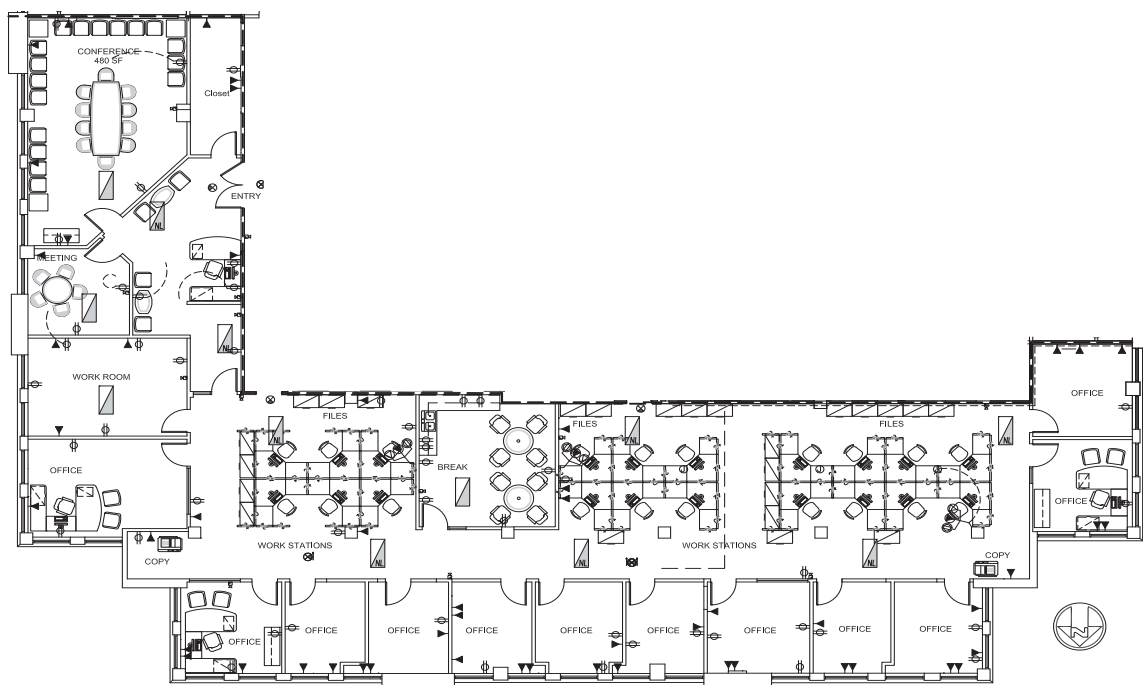
AVAILABILITY

Suite	Available Space (SF)	Available Date
230	6,453	Now
300	2,197	Now
304	2,534	Now
505	1,456	Now



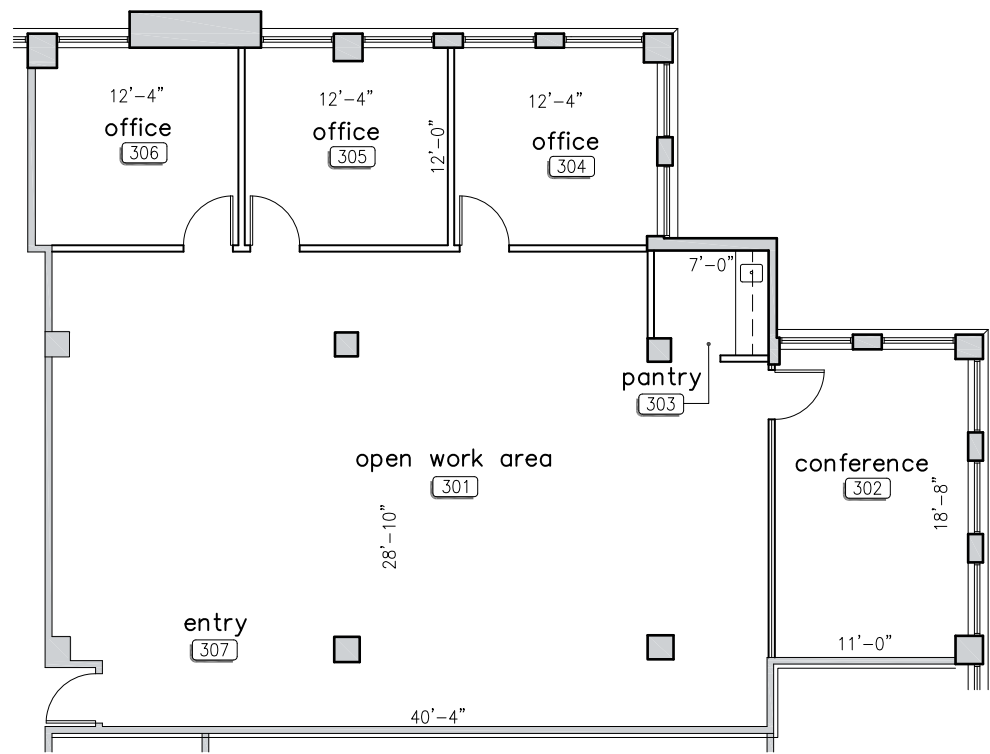
Floor Plans

SUITE 230 | 6,453± SF

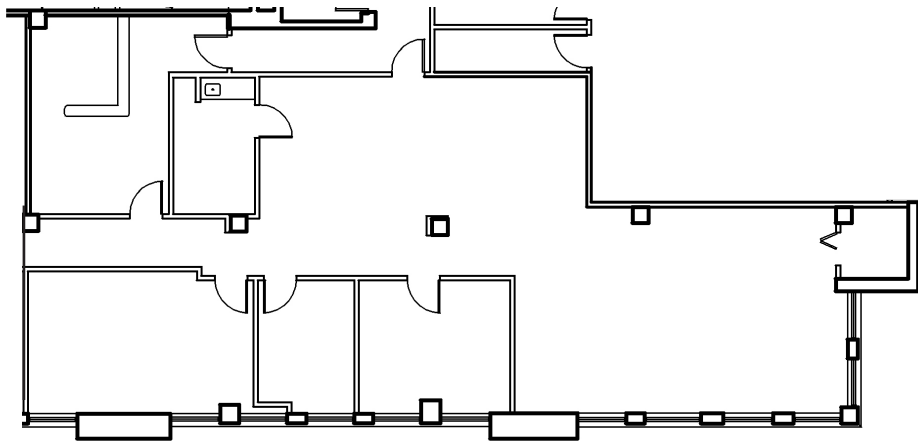


Floor Plans

SUITE 300 | 2,197± SF

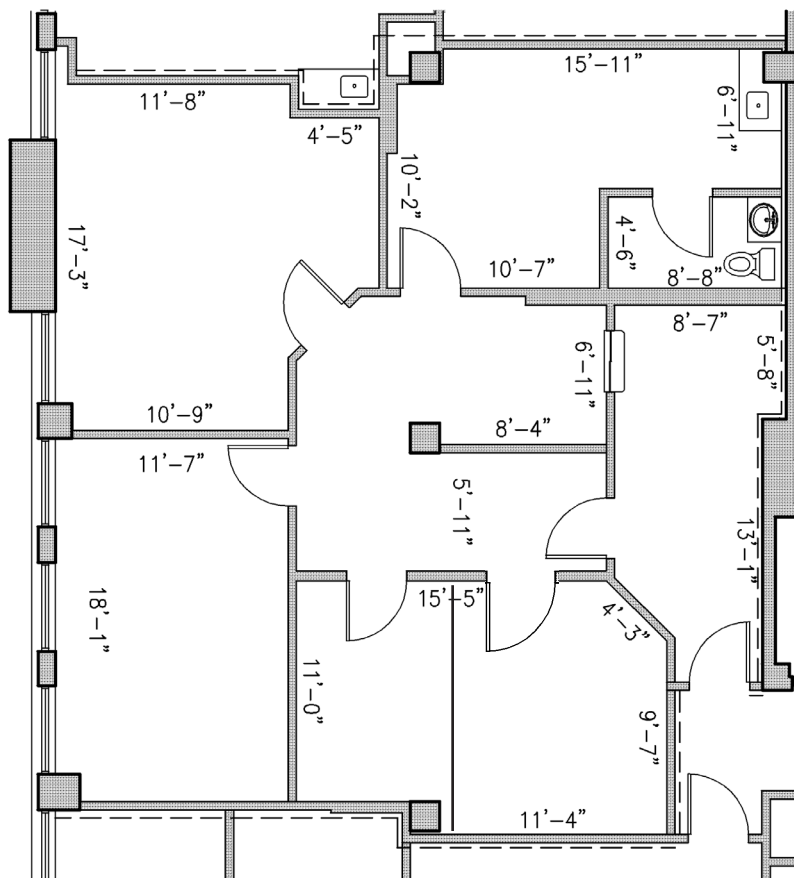


SUITE 304 | 2,534± SF



Floor Plans

SUITE 505 | 1,456± SF



Contact Us

ROBERT KELLOGG, CCIM
407 362 6163
robert.kellogg@colliers.com

A. TODD DAVIS, SIOR, CCIM
407 362 6121
todd.davis@colliers.com

COLIN MORRISON
407 362 6153
colin.morrison@colliers.com