

FOR LEASE > INDUSTRIAL SPACE

# Washington Square

7500-7586 WASHINGTON AVE S | EDEN PRAIRIE, MN



## Office/Warehouse Space for Lease

Washington Square is in a highly desirable office/warehouse complex consisting of two buildings totaling 78,205 square feet with immediate access to Highway 169.

## Building Amenities

- > Infill location in southwest metro
- > 78,205 total square feet on 5.61 acres
- > 16' clear height
- > Dock and drive-in loading
- > Immediate access to Highway 169
- > Clean, well-lit and functional office and warehouse space



Managed by:







## > Contact Us



Jason Simek  
952 897 7898  
[jason.simek@colliers.com](mailto:jason.simek@colliers.com)



Peter Mork J.D.  
952 897 7772  
[peter.mork@colliers.com](mailto:peter.mork@colliers.com)

Managed by:



Capital Partners

## COLLIERS INTERNATIONAL

### MINNEAPOLIS-ST PAUL

900 2nd Avenue South, Suite 1575  
Minneapolis, MN 55402  
+1 952 897 7700

[colliers.com/msp](http://colliers.com/msp)

This document has been prepared by Colliers International for advertising and general information only. This document is not an offer or promise to purchase, but is an invitation to submit an offer or promise to purchase. Colliers International makes no guarantees, representations or warranties of any kind, expressed or implied, regarding the information including, but not limited to, warranties of content, accuracy and reliability. Any interested party should undertake their own inquiries as to the accuracy of the information. Colliers International excludes unequivocally all inferred or implied terms, conditions and warranties arising out of this document and excludes all liability for loss and damages arising there from. This publication is the copyrighted property of Colliers International and /or its licensor(s). © 2014. All rights reserved. This communication is not intended to cause or induce breach of an existing listing agreement. Colliers International (Québec) Inc. Real Estate Agency.



# Washington Square

7500-7586 WASHINGTON AVE S | EDEN PRAIRIE, MN

## PROPERTY ADDRESS:

7586 Washington Avenue S  
Eden Prairie, MN

## TOTAL BUILDINGS SQUARE FEET:

78,205 SF Total

## CURRENTLY AVAILABLE:

### > Suite 7502

8,881 SF Warehouse  
2,304 SF Office  
11,185 SF Total  
Four (4) Drive-in doors

### > Suite 7542

7,500 SF Warehouse  
3,000 SF Office  
10,500 SF Total  
One (1) Drive-in doors  
Two (2) Dock doors

## LOADING:

Three grade-level drive-in doors  
Four dock doors

## CLEAR HEIGHT:

16' clear

## NET RENTAL RATES:

\$4.75 PSF warehouse  
\$9.00 PSF office  
\* \$3.00 PSF mezzanine (Gross)

## 2018 EST. CAM & REAL ESTATE TAX:

\$1.59 PSF CAM  
\$1.77 PSF RE Tax  
\$3.36 Total PSF

## AMENITIES:

- Excellent southwest metro location
- Exceptional access to Hwy 169
- End cap
- 3 phase, 208/120 volt
- 40' x 30' column



## FOR LEASING INFORMATION, CONTACT:

**Jason Simek**

952 897 7898

jason.simek@colliers.com

**Peter Mork J.D.**

952 897 7772

peter@capitalpartnersmn.com

Managed by:



Colliers International | Minneapolis-St. Paul

900 2nd Avenue South, Suite 1575,

Minneapolis, MN 55402

[www.colliers.com](http://www.colliers.com)



SUBSCRIBE TO OUR BLOG



# FLOOR PLAN >

WASHINGTON SQUARE | SUITE 7502



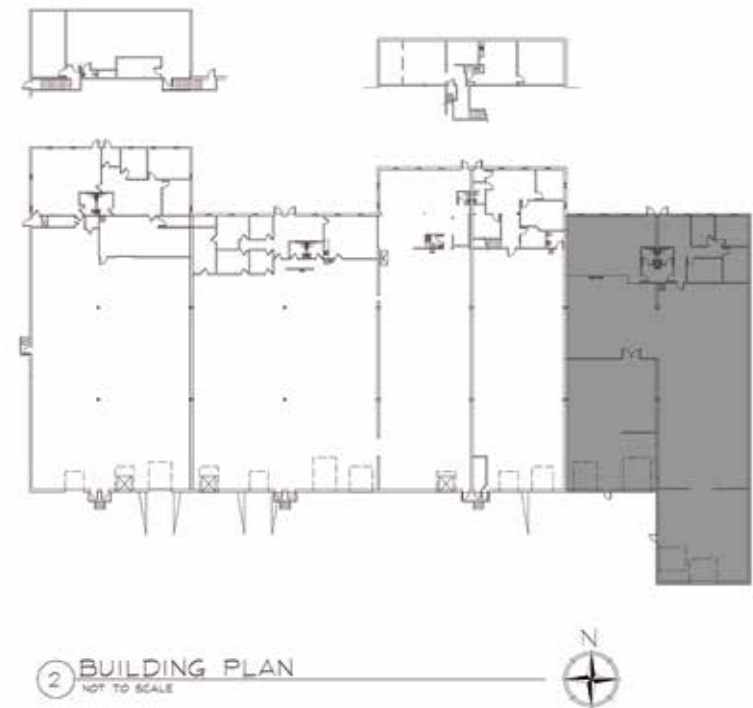
Accelerating success.



## CONTACT US >

Jason Simek  
952 897 7898  
[jason.simek@colliers.com](mailto:jason.simek@colliers.com)

Peter Mork J.D.  
952 897 7772  
[peter@capitalpartnersmn.com](mailto:peter@capitalpartnersmn.com)



> SUITE 7502  
8,881 SF Warehouse  
2,304 SF Office  
11,185 SF Total  
Four (4) Drive-in doors

Managed by:



# FLOOR PLAN >

WASHINGTON SQUARE | SUITE 7542



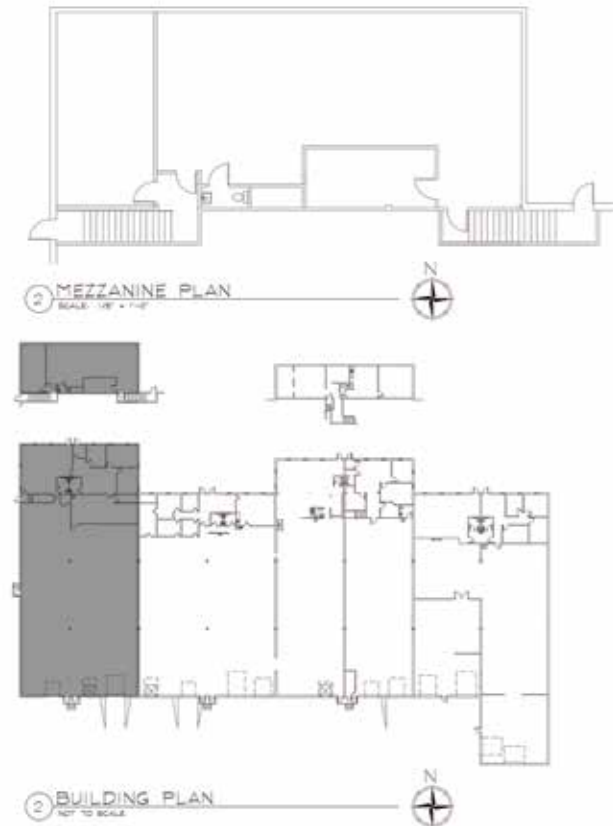
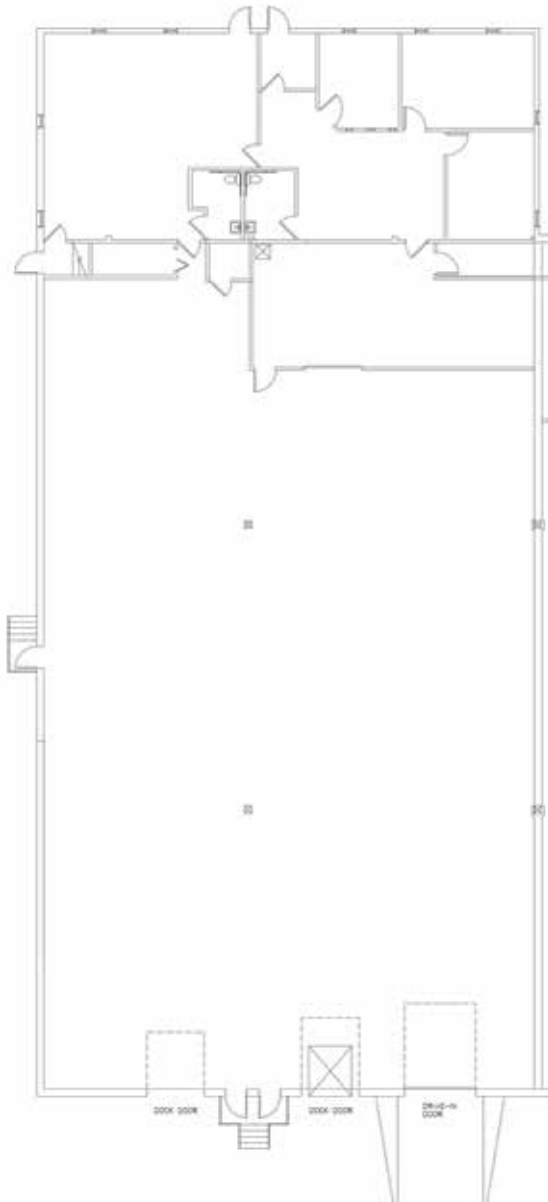
Accelerating success.



## CONTACT US >

Jason Simek  
952 897 7898  
[jason.simek@colliers.com](mailto:jason.simek@colliers.com)

Peter Mork J.D.  
952 897 7772  
[peter@capitalpartnersmn.com](mailto:peter@capitalpartnersmn.com)



## > SUITE 7542

7,500 SF Warehouse  
3,000 SF Office  
10,500 SF Total  
One (1) Drive-in doors  
Two (2) Dock doors

Managed by:

