



Colliers

Accelerating success

Bldg A

Bldg B

Bldg C

Kalaeloa Blvd

Malakole St

Oihana St

Prime Industrial Space for Lease in the
Heart of Kapolei's Industrial Core

Campbell Industrial Village

91-291 Kalaeloa Blvd, Kapolei, HI 96707

Michael Gomes (S)

Lic# RS-82817

808 285 9502

michael.gomes@colliers.com

Scott L. Mitchell (B), SIOR

Lic# RB-15492

M 808 223 1564

scott.mitchell@colliers.com

220 S. King Street, Suite 1800

Honolulu, Hawaii 96813

808 524 2666

colliers.com

Property Information

Campbell Industrial Village offers highly functional warehouse spaces in one of Oahu's most desirable industrial locations. Strategically positioned at the corner of Kalaeloa Boulevard and Malakole Street, the property provides exceptional visibility, easy access, and direct connectivity to major transportation routes serving West Oahu.

With units ranging from 2,500 to 12,000 square feet, the project accommodates a wide variety of users — from small contractors and service providers to larger distributors and manufacturers. This gated and professionally managed complex features high-cube layouts, roll-up or dock-high loading, and ample on-site parking, offering an ideal setting for efficient operations of any scale.



Property Highlights

Area	Kapolei
Address	91-291 Kalaeloa Blvd, Kapolei, HI
TMK	(1) 9-1-32-53
Available Spaces	Unit A9 (2,500 SF) Unit B6 (3,000 SF) Unit B7 (6,000 SF) Unit C11 (12,000 SF)
Base Rent	\$1.40 PSF/Mo.
Operating Expenses	\$0.35 PSF/Mo. (Estimated)
Term	3 - 5 Years
Zoning	I-2

Features & Benefits

- Quick and easy highway and freeway access
- Loading docks for select units
- Minutes from Kalaeloa Harbor
- Ample on-site parking for tenants and customers
- Well positioned at the corner of Kalaeloa & Malakole
- Gated and secure project with professional management

Michael Gomes (S)

Lic# RS-82817
808 285 9502
michael.gomes@colliers.com

Scott L. Mitchell (B), SIOR

Lic# RB-15492
M 808 223 1564
scott.mitchell@colliers.com

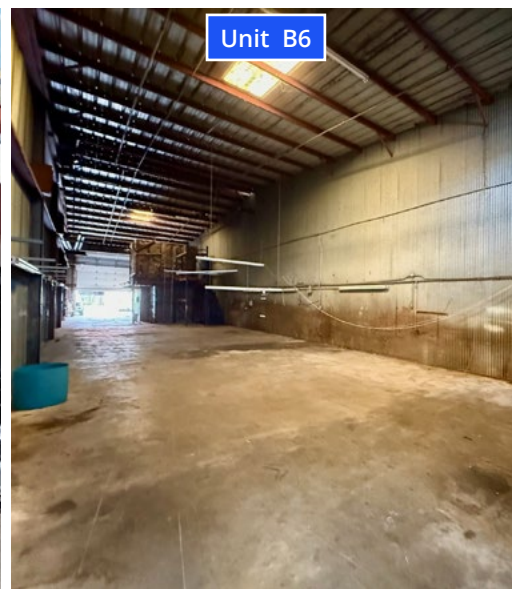
220 S. King Street, Suite 1800
Honolulu, Hawaii 96813
808 524 2666
colliers.com





Unit B7
6,000 SF

Unit B6
3,000 SF



Unit B6



Unit B7



Unit C11
12,000 SF



Unit C11



Unit C11

Michael Gomes (S)

Lic# RS-82817
808 285 9502
michael.gomes@colliers.com

Scott L. Mitchell (B), SIOR

Lic# RB-15492
M 808 223 1564
scott.mitchell@colliers.com



This document/email has been prepared by Colliers for advertising and general information only. Colliers makes no guarantees, representations or warranties of any kind, expressed or implied, regarding the information including, but not limited to, warranties of content, accuracy and reliability. Any interested party should undertake their own inquiries as to the accuracy of the information. Colliers excludes unequivocally all inferred or implied terms, conditions and warranties arising out of this document and excludes all liability for loss and damages arising there from. This publication is the copyrighted property of Colliers and /or its licensor(s). © 2025. All rights reserved. This communication is not intended to cause or induce breach of an existing listing agreement.

220 S. King Street, Suite 1800
Honolulu, Hawaii 96813
808 524 2666
colliers.com