

**FOR
LEASE**

8050 W RIFLEMAN STREET

ROYAL PARK PLAZA | BOISE, ID



PROPERTY INFORMATION

Property Type:	Office
Building Size:	12,722 SF
Parking:	5 : 1,000
Zoning:	C - 2D

SPACE AVAILABLE

Suite	Size	Rate
100	7,720 SF	\$15.00 FSEJ

HIGHLIGHTS

- » Well located, highly visible office building on major retail corridor
- » Great layout with private offices, conference rooms, and built-in cubicles
- » Perfect for office/medical office users
- » Monument and building signage available
- » Abundant parking
- » Fiber to building
- » TI's Negotiable

Colliers
INTERNATIONAL

SCOTT FEIGNER
208 493 5107
scott.feighner@colliers.com

JAMIE ANDERSON
208 472 2842
jamie.anderson@colliers.com

 **View Virtual Tour**

V110717

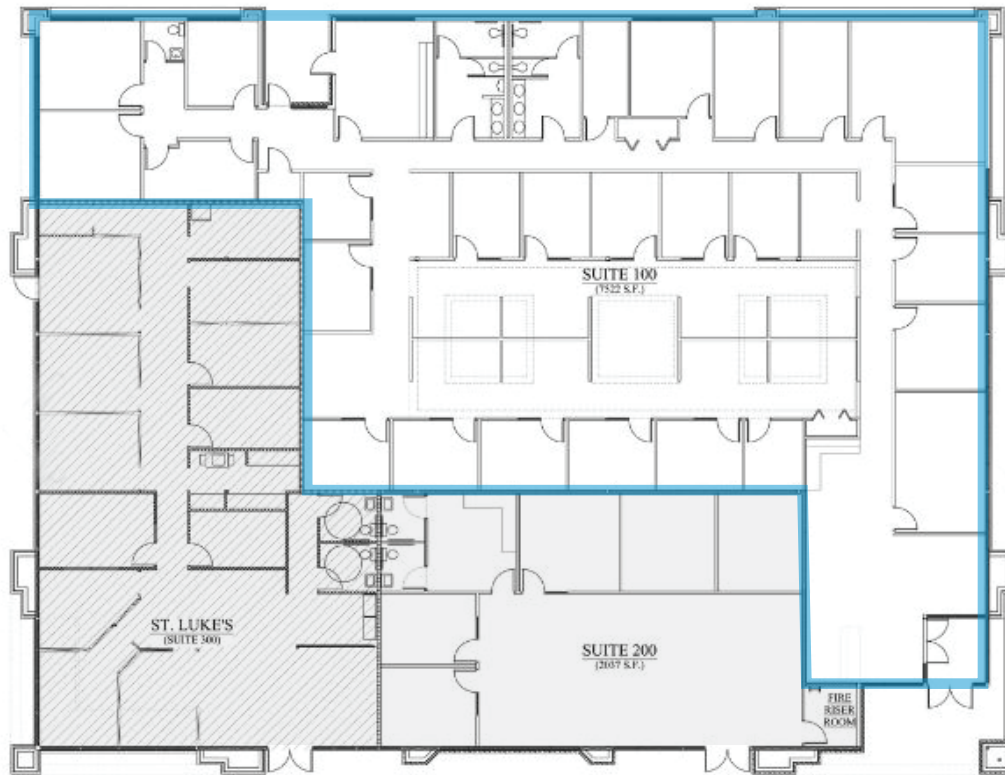
Colliers International Idaho | 755 West Front Street, Suite 300 Boise, Idaho 83702 | www.colliers.com/boise | 208 345 9000

This document has been prepared by Colliers International for advertising and general information only. Colliers International makes no guarantees, representations or warranties of any kind, expressed or implied, regarding the information including, but not limited to, warranties of content, accuracy and reliability. Any interested party should undertake their own inquiries as to the accuracy of the information. Colliers International excludes unequivocally all inferred or implied terms, conditions and warranties arising out of this document and excludes all liability for loss and damages arising there from. This publication is the copyrighted property of Colliers International and/or its licensor(s). ©2016. All rights reserved

**FOR
LEASE**

8050 W RIFLEMAN STREET

ROYAL PARK PLAZA | BOISE, ID



Colliers
INTERNATIONAL

SCOTT FEIGNER
208 493 5107
scott.feighner@colliers.com

JAMIE ANDERSON
208 472 2842
jamie.anderson@colliers.com

**FOR
LEASE**

8050 W RIFLEMAN STREET

ROYAL PARK PLAZA | BOISE, ID



Colliers
INTERNATIONAL

SCOTT FEIGNER
208 493 5107
scott.feighner@colliers.com

JAMIE ANDERSON
208 472 2842
jamie.anderson@colliers.com