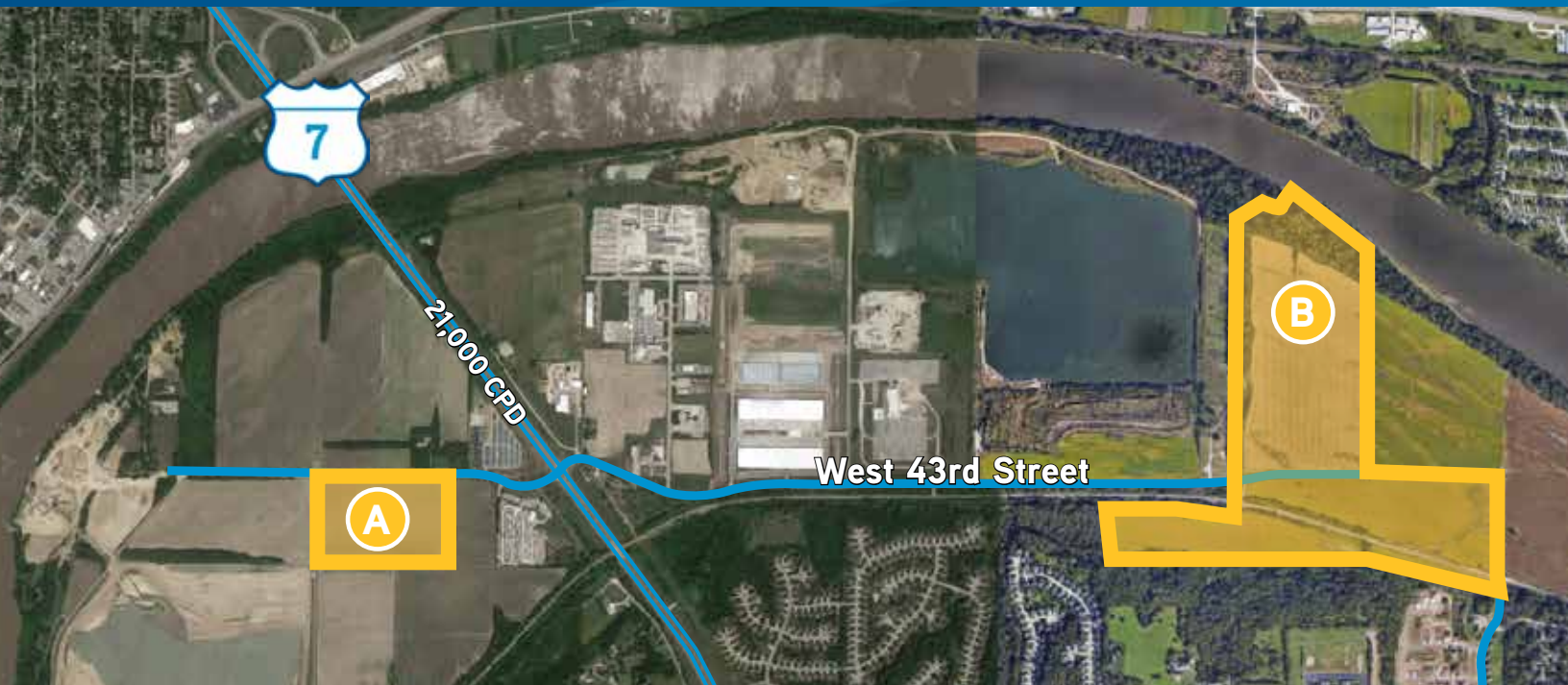


FOR SALE > LAND

K-7 & 43rd Street

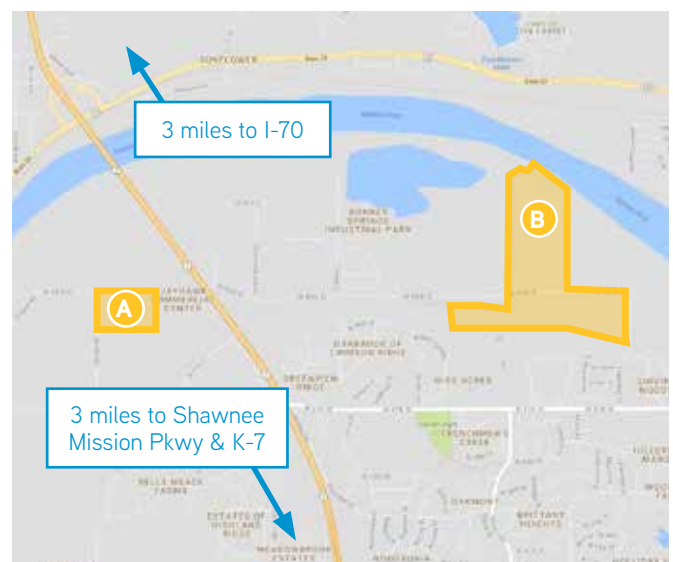


SHAWNEE, KANSAS



PROPERTY HIGHLIGHTS

- > Land size: 180± acres
 - > Lot A: 25± acres, west of K-7
 - > Lot B: 155± acres, east of K-7
- > Zoned: Agriculture (anticipated industrial zoning)
- > Topography: clear and graded (with the exception of parcels 7 and 8)
- > Taxes: assessed as agriculture
- > Utilities: contact broker to discuss
- > Rail availability
- > Great visibility and accessibility to K-7
- > Excellent demographics
- > Perfect industrial development site



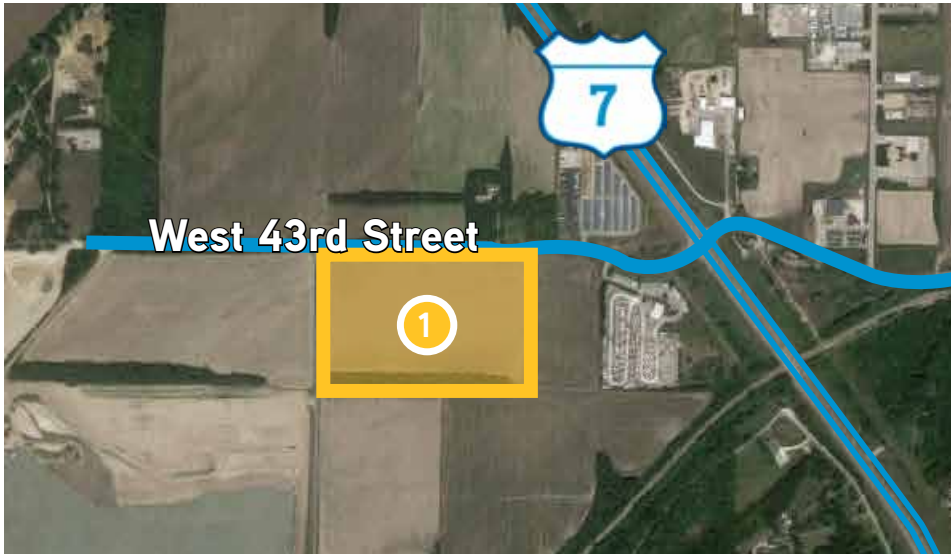
TOM KENNEDY
+1 816 556 1118
KANSAS CITY, MO
tom.kennedy@colliers.com

COLLIERS INTERNATIONAL
4520 Main Street, Suite 1000
Kansas City, MO 64111
www.colliers.com

FOR SALE > LAND

K-7 & 43rd Street

SHAWNEE, KANSAS



PROPERTY DESCRIPTION

LAND #	ACRES
Parcel 1	24.31
Parcel 2	70.56
Parcel 3	8.97
Parcel 4	21.86
Parcel 5	15.59
Parcel 6	11.91
Parcel 7	12.54
Parcel 8	11.35
Parcel 9	2.63



This document has been prepared by Colliers International for advertising and general information only. Colliers International makes no guarantees, representations or warranties of any kind, expressed or implied, regarding the information including, but not limited to, warranties of content, accuracy and reliability. Any interested party should undertake their own inquiries as to the accuracy of the information. Colliers International excludes unequivocally all inferred or implied terms, conditions and warranties arising out of this document and excludes all liability for loss and damages arising there from. This publication is the copyrighted property of Colliers International and/or its licensor(s). © 2018. All rights reserved.

Colliers
INTERNATIONAL