

# 2505 SECOND

SEATTLE, WASHINGTON



- Extensive lobby and common area renovation completed in 2018
- Sweeping views of Elliott Bay and Downtown Seattle
- Professional tenant roster with office suites ideal for small to mid-size tenants
- Excellent proximity and easy access to Highway 99 and Interstate 5
- Garage parking ratio of one stall per 1,000 sf



[HOME](#) | [FOR LEASE](#) | [FEATURES & LOCATION](#) | [MAP](#) | [CONTACT](#)



**Kerry Carlson**  
Regional Vice President  
kcarlson@steelwavellc.com  
425.372.5500



**David Gurry**  
david.gurry@colliers.com  
206.382.8549

**Dan Dahl**  
dan.dahl@colliers.com  
206.382.8543

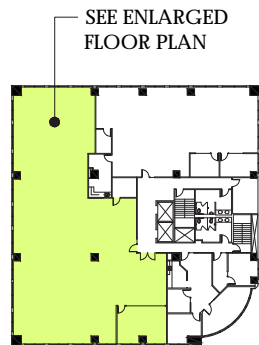
## OFFICE SPACE

Suite (click below to view layout)	SF	Description/Features	Available
405	6,330	This space offers an open office area with creative finishes and a large conference room. The suite has views of the city and Puget Sound.	Now
610	2,940	This suite has views of Puget Sound and offers several perimeter offices, a small break room, and a reception area.	Now
705	3,402	This suite offers an open office area with a break room, one perimeter office, and a large conference room.	Now

## RETAIL SPACE

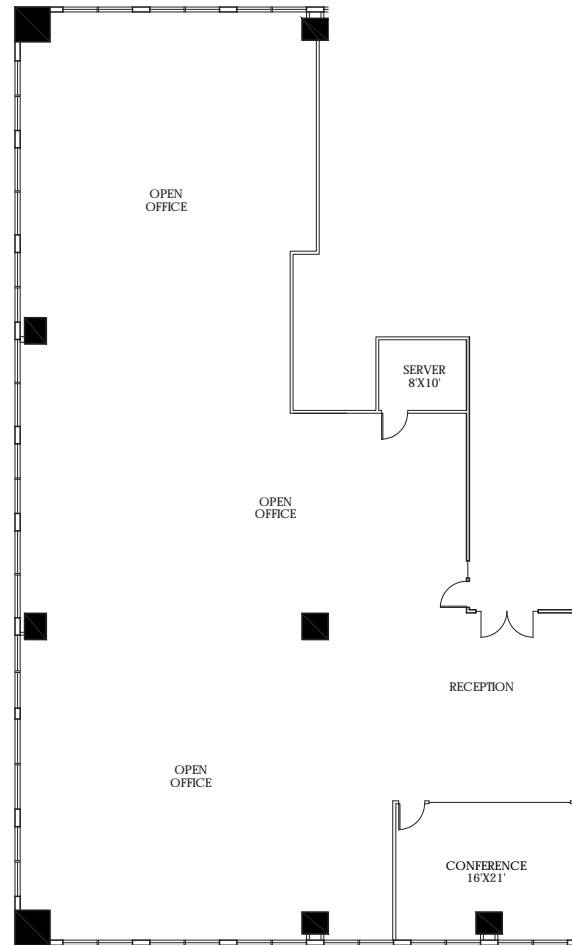
Suite (click below to view layout)	SF	Description/Features	Available
106	935	Retail salon space with open layout and lots of natural light. Suite includes a break room, storage room and private restroom located in a high foot traffic area in the beautiful Belltown neighborhood.	Now

## Office Suite 405 | 6,330 SF



### KEY PLAN

SCALE: N.T.S.



### FLOOR PLAN

SCALE: N.T.S.



**Kerry Carlson**  
Regional Vice President  
kcarlson@steelwavellc.com  
425.372.5500

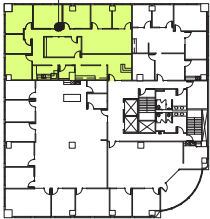


**David Gurry**  
david.gurry@colliers.com  
206.382.8549

**Dan Dahl**  
dan.dahl@colliers.com  
206.382.8543

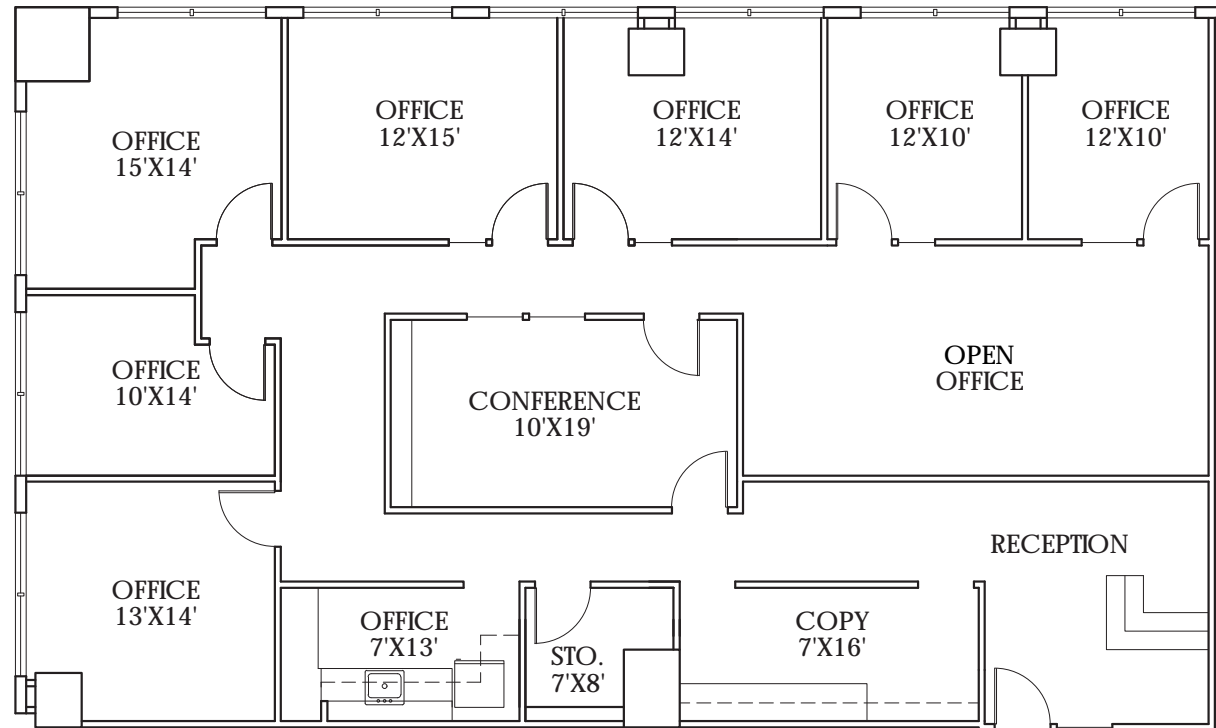
## Office Suite 610 | 2,940 SF

SEE ENLARGED  
FLOOR PLAN



### KEY PLAN

SCALE: N.T.S.



### FLOOR PLAN

SCALE: N.T.S.



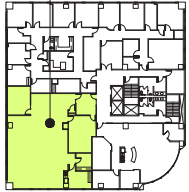
**Kerry Carlson**  
Regional Vice President  
kcarlson@steelwavellc.com  
425.372.5500



**David Gurry**  
david.gurry@colliers.com  
206.382.8549

**Dan Dahl**  
dan.dahl@colliers.com  
206.382.8543

SEE ENLARGED  
FLOOR PLAN

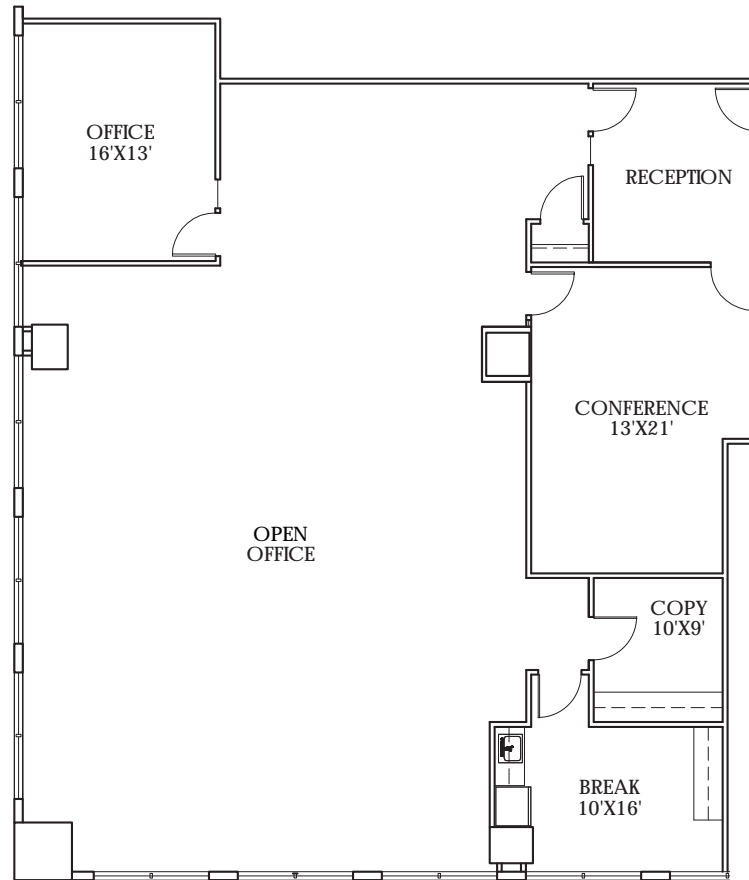


**KEY PLAN**

SCALE: N.T.S.



**Office Suite 705** | 3,402 SF



**FLOOR PLAN**

SCALE: N.T.S.



**Kerry Carlson**  
Regional Vice President  
kcarlson@steelwavellc.com  
425.372.5500

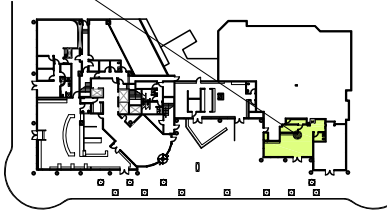


**David Gurry**  
david.gurry@colliers.com  
206.382.8549

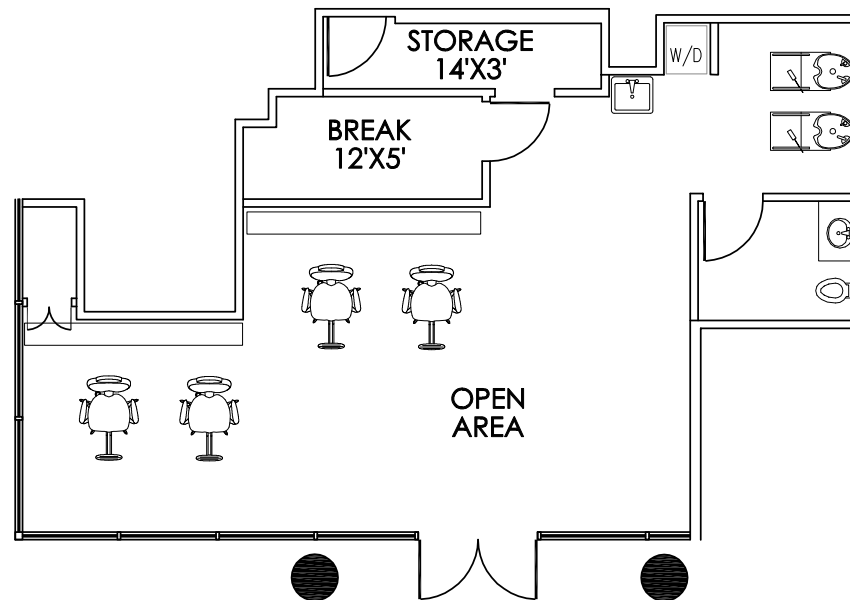
**Dan Dahl**  
dan.dahl@colliers.com  
206.382.8543

## Retail Suite 106 | 935 SF

SEE ENLARGED  
FLOOR PLAN



KEY PLAN  
SCALE: N.T.S.



**Kerry Carlson**  
Regional Vice President  
kcarlson@steelwavellc.com  
425.372.5500



**David Gurry**  
david.gurry@colliers.com  
206.382.8549

**Dan Dahl**  
dan.dahl@colliers.com  
206.382.8543

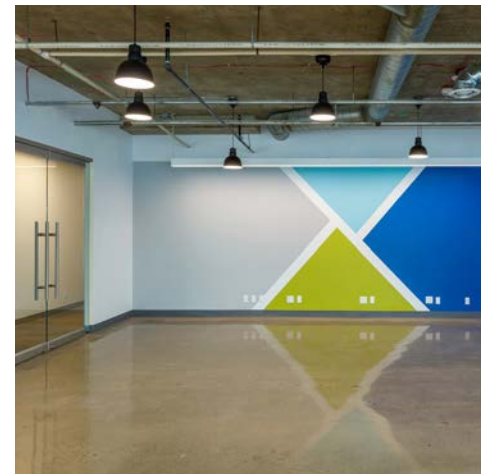
## Excellent Location

Featuring sweeping views of Elliott Bay and Downtown Seattle, the 73,604 sf office building at 2505 Second Avenue is well located in Seattle's Belltown neighborhood. The seven-story building offers rent-ready suites that are ideal for small to mid-size tenants, garage parking and easy access to Highway 99 and Interstate 5.

2505 Second also enjoys immediate ground-floor retail services and proximity to Belltown's many restaurants, hotels and shopping venues.

## Building & Area Amenities

- Extensive lobby and common area renovation completed in 2018
- Rent-ready office suites for immediate occupancy
- Sweeping views of Elliott Bay and Downtown Seattle
- Professional tenant roster with office suites ideal for small to mid-size tenants
- Excellent proximity and easy access to Highway 99 and Interstate 5
- Garage parking ratio of one stall per 1,000 sf
- Proximity to over 15,000 residential units, as well as restaurants, hotels and shopping, including Pike Place Market and Seattle Center
- Onsite restaurants, coffee and juice bar, dry cleaners, and barbershop
- Walk Score of 97, Transit Score of 100, and Bike Score of 79



**Kerry Carlson**  
Regional Vice President  
kcarlson@steelwavellc.com  
425.372.5500



**David Gurry**  
david.gurry@colliers.com  
206.382.8549

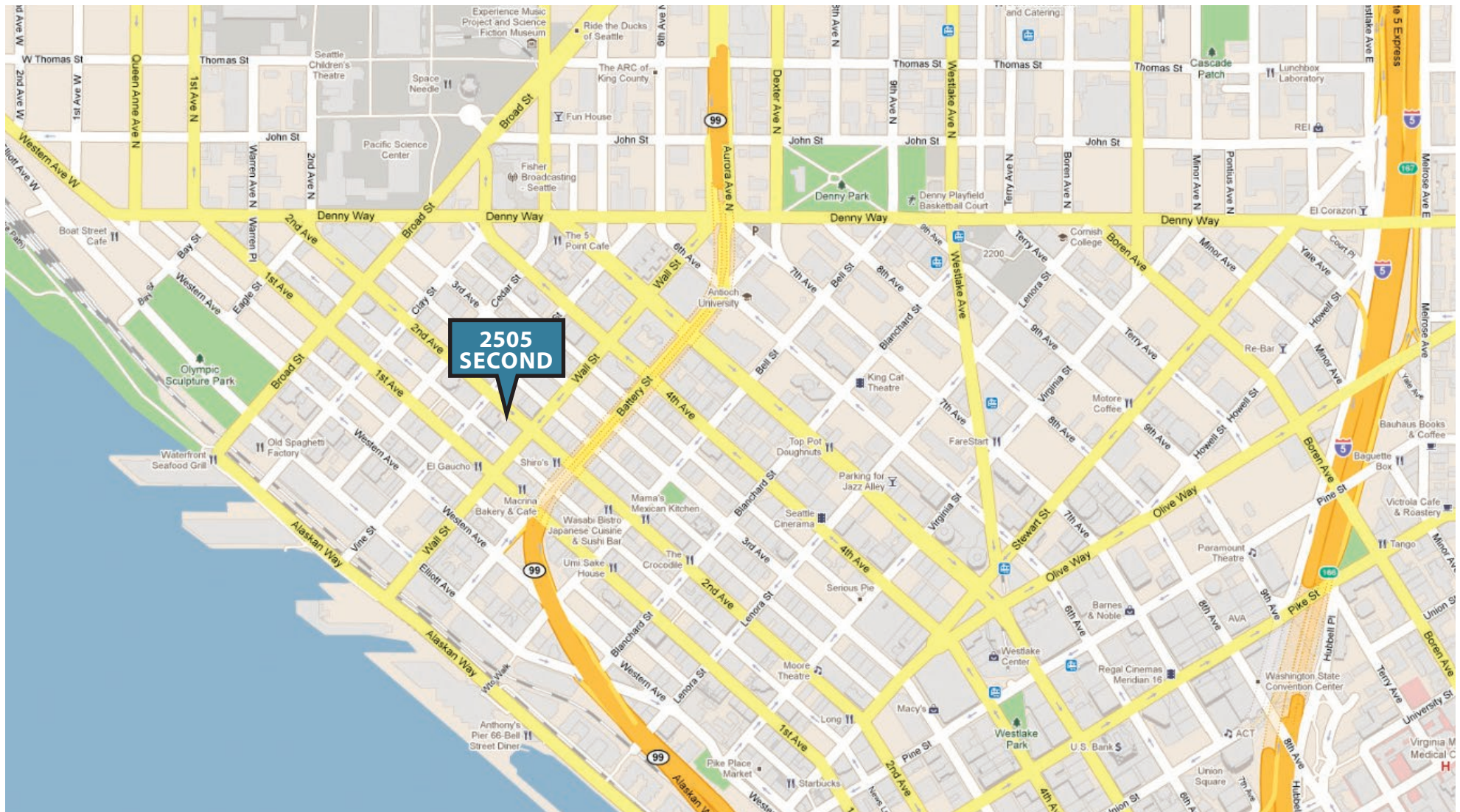
**Dan Dahl**  
dan.dahl@colliers.com  
206.382.8543



# 2505 SECOND

2505 Second Avenue | Seattle, Washington

HOME | FOR LEASE | FEATURES & LOCATION **MAP** CONTACT



**Kerry Carlson**  
Regional Vice President  
kcarlson@steelwavellc.com  
425.372.5500



**David Gurry**  
david.gurry@colliers.com  
206.382.8549

**Dan Dahl**  
dan.dahl@colliers.com  
206.382.8543





[www.steelwavellc.com](http://www.steelwavellc.com)

**Kerry Carlson**  
Regional Vice President  
[kcarlson@steelwavellc.com](mailto:kcarlson@steelwavellc.com)

T: 425.372.5500  
F: 425.372.5520

A complete listing of properties  
for lease can be found at:  
[www.steelwavellc.com](http://www.steelwavellc.com)



[www.colliers.com](http://www.colliers.com)

T: 206.223.0866  
F: 206.223.1427

**David Gurry**  
[david.gurry@colliers.com](mailto:david.gurry@colliers.com)  
206.382.8549

**Dan Dahl**  
[dan.dahl@colliers.com](mailto:dan.dahl@colliers.com)  
206.382.8543