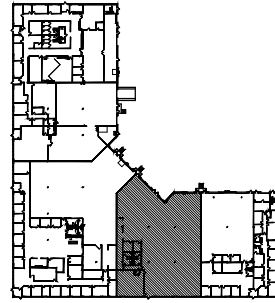


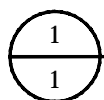
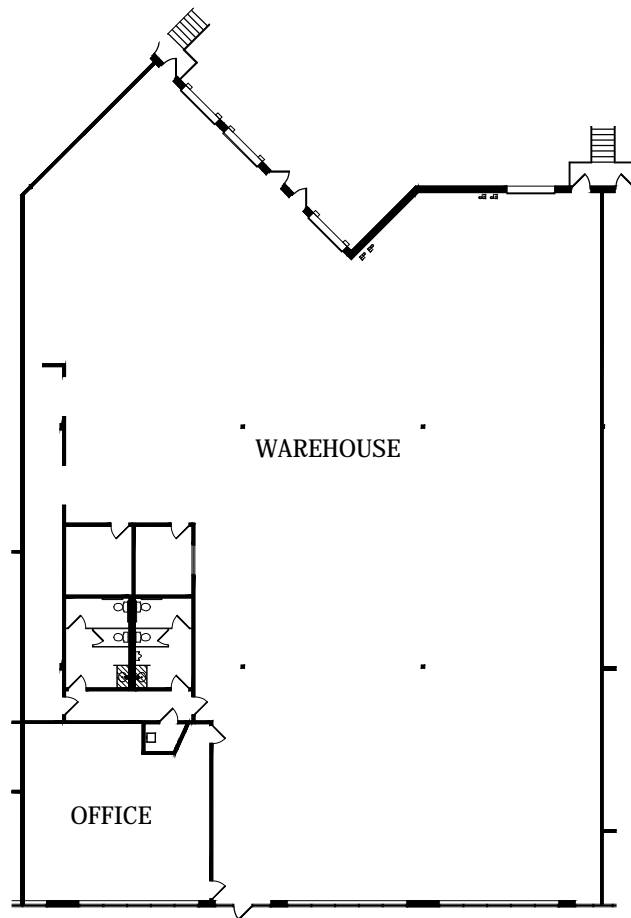
SQUARE FOOTAGE SUMMARY

OFFICE	1,425 S.F.
WAREHOUSE	10,498 S.F.
BLDG M/E	82 S.F.
TOTAL	12,005 S.F.



KEY PLAN

NOT TO SCALE



FLOOR PLAN - SUITE 115

14.01437.00/ TTL

FILE COPY, HAS NOT BEEN FIELD VERIFIED.

05/18/17

SCALE: 1/32"=1'-0"



LEASED & MANAGED BY:



BASS LAKE BUSINESS CENTRE I

5480 NATHAN LANE NORTH
PLYMOUTH, MINNESOTA

NELSON

Nelson Upper Midwest Operating Company, LLC
a licensed affiliate

1201 Marquette Avenue South - Suite 200
Minneapolis, MN 55403
Phone: (612) 822-1211
Fax: (612) 822-1006