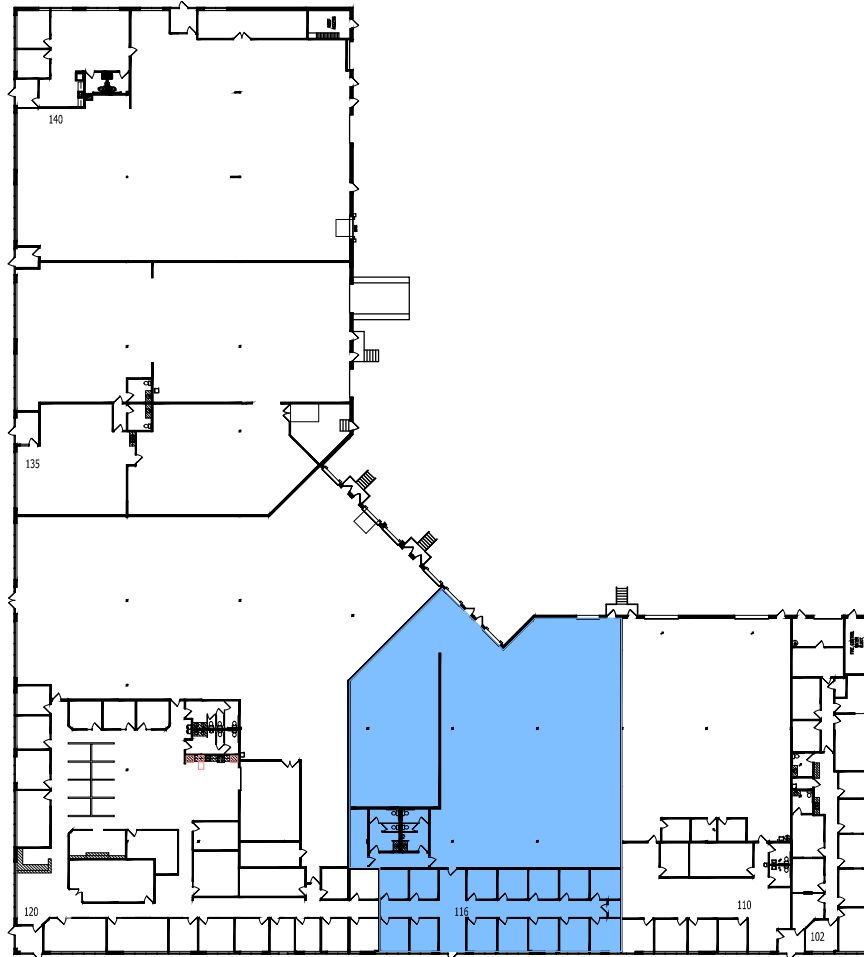


SUITE 140
REVIVE RESTORATION

SUITE 135
STAHL CONSTRUCTION

SUITE 120
AVEX

SUITE 102
NORTH EDGE CHIROPRACTIC



SUITE 116	
VACANT	
OFFICE	3,070 S.F.
WAREHOUSE	7,918 S.F.
BLDG M/E	76 S.F.
TOTAL	11,064 S.F.
EXP:	--

SUITE 110
FLUIDYNE ENGINEERING

1
1

BUILDING KEY PLAN

24.0001750.000/ TTL

09/19/2025

NOT TO SCALE



LEASED & MANAGED BY:



BASS LAKE BUSINESS CENTRE I
 5480 NATHAN LANE NORTH
 PLYMOUTH, MINNESOTA



901 Marquette Avenue South - Suite 2850
 Minneapolis, MN 55402
 Contact: Tiffany Townsend
 Phone: (612) 370-1594