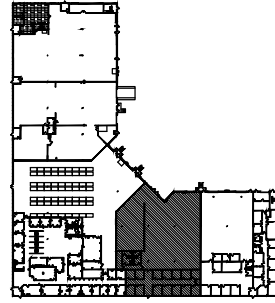
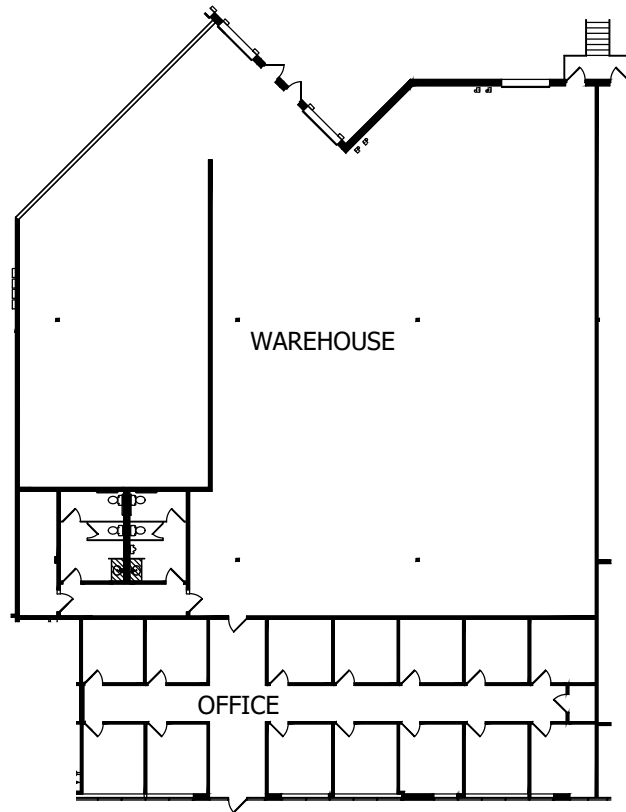


SQUARE FOOTAGE SUMMARY

OFFICE	3,070 SF
WAREHOUSE	7,918 SF
BLDG M/E	76 SF
TOTAL	<u>11,064 RSF</u>



KEY PLAN



1 FLOOR PLAN - SUITE 116
1 14.0001437.000/ TTL

9/19/2025
SCALE: 1/32"=1'-0"

LEASED & MANAGED BY:



BASS LAKE BUSINESS CENTRE I

5480 NATHAN LANE NORTH
PLYMOUTH, MINNESOTA



1201 Marquette Avenue South - Suite 2850
Minneapolis, MN 55402
Contact: Tiffany Townsend
Phone: (612) 370-1594