



Manufacturing, Flex and Office Uses

65 W. Century Park Way
Salt Lake City, UT 84115

Skyler Smith
Senior Associate
+1 801 441 5917
skyler.smith@colliers.com

Jeremy Terry
Vice President
+1 801 671 9349
jeremy.terry@colliers.com

Colliers International
111 S. Main Street | Suite 2200
Salt Lake City, UT 84111
Main: +1 801 947 8300
colliers.com

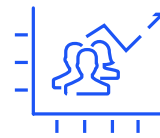
18,502 SF on **1.11 AC**
Available For Sale or

REDUCED PRICE
Sale Price: \$2,850,000

Lease Rate: \$0.85 NNN



Central Salt Lake
County location

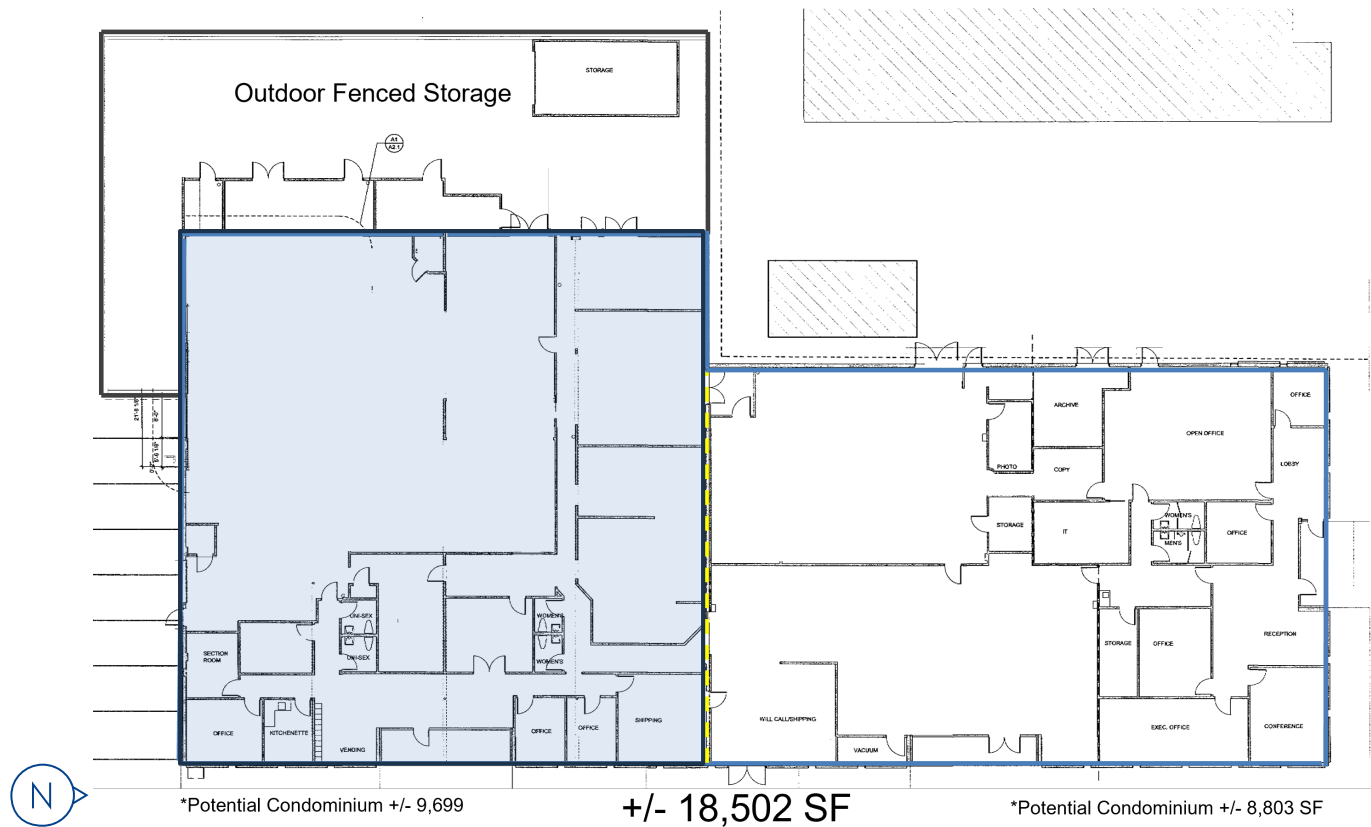


1.2M people living
within 15 miles



Condominium
options available

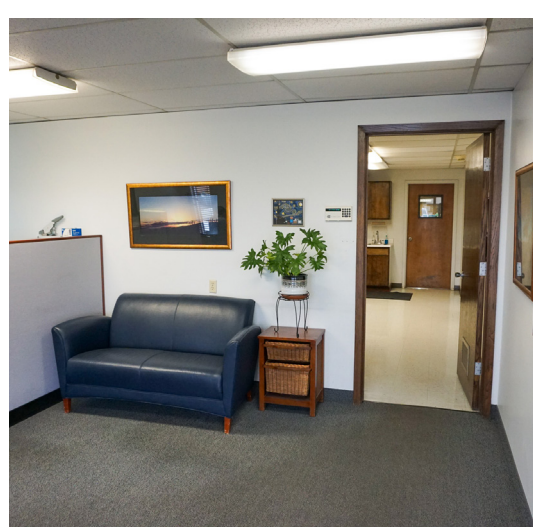
Floor Plan & Details



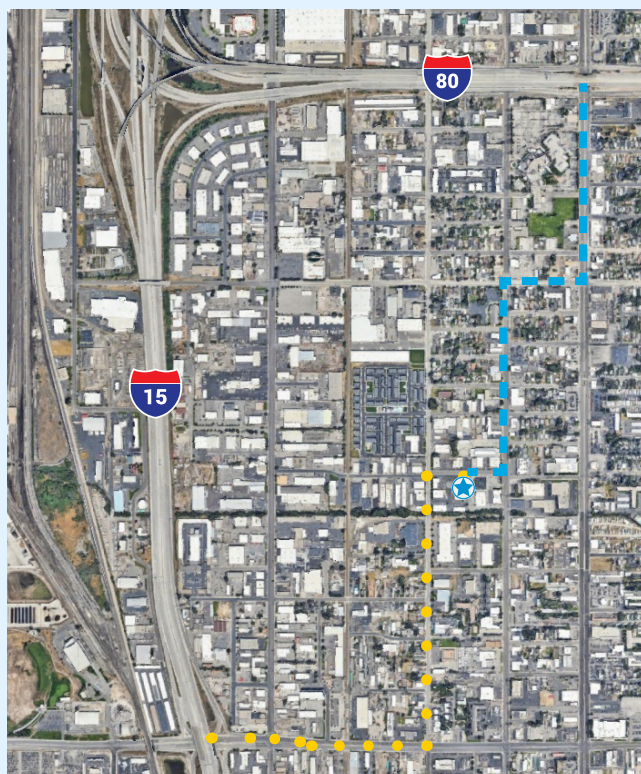
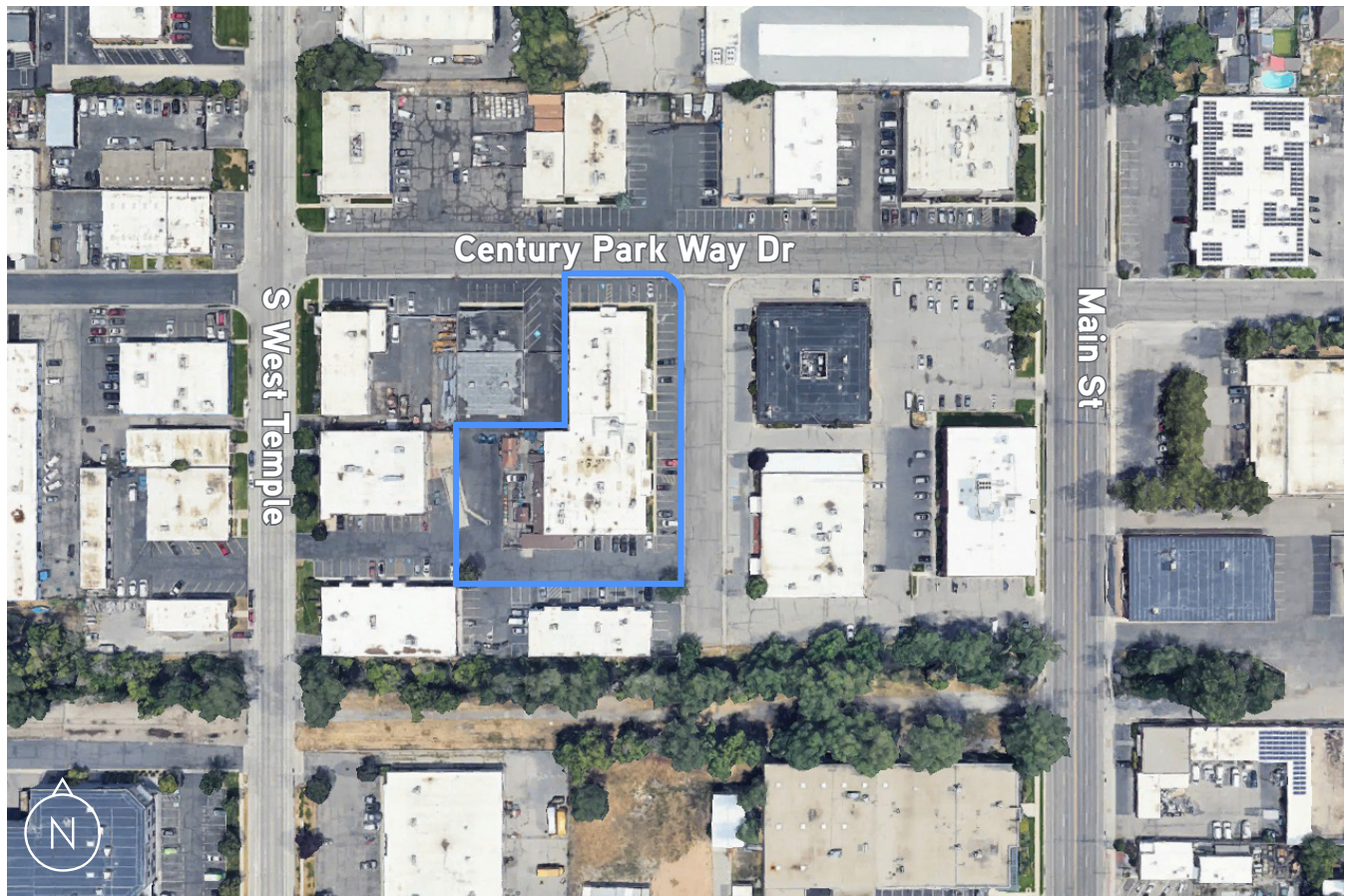
Property Details

Acres	1.11	Dock	One (1) Shared fairweather dock
Square Feet	± 18,502 SF	Power	±1600 AMP, 208-480 V, 3-Phase
Warehouse/Production	14,675 SF	Construction	Block and brick
Finished Office	3,827 SF	Fenced Yard	±3,000 SF containing three (3) sheds
Condominium Options	±9,699 SF/ ±8,803 SF	Parking	60 Spaces
Zoning	CG (Commercial General)	Restrooms	Two (2) Women's, Two (2) Men's, Two (2) Unisex
Year Built	1968	HVAC	Five (5) rooftop units
Depth	110' - 220'	Finished Office Features	Kitchenette Breakroom Conference room Multiple private offices Will Call area
Clear Height	8' ±		
Grade Level Doors	Two (2) One (1) 10' x 7' One (1) 7' x 6'		

Potential uses: Manufacturing, Medical/General Office, Alcoholic Beverage (Industrial/Manufacturing), Sales/Retail, Animal Hospital, Auto Restoration, Bakery, Commercial Repair Services/Contractors, Dry Cleaning, Manufacturing, Child Care



Site & Location



Central Salt Lake County
location with quick
access to I-15 and I-80

Drive Times

Destination	Distance	Drive Time
I-15	1 mile	4 minutes
I-80	1 miles	4 minutes
Downtown SLC	5.7 miles	12 minutes
SLC Intl Airport	9.3 miles	13 minutes
Research Park at University of Utah	9 miles	16 minutes
Northwest Quadrant Area	~10 miles	15 minutes

Diverse Manufacturing

Manufacturing in the state of Utah is more than a \$20 billion a year industry. The manufacturing industry is one of the key growth sectors in the state's long-range economic plan. It makes up nearly 14% of state's economy, and employs more than 125,000 workers, nearly 8% of Utah's workforce is employed in manufacturing.

There are manufacturing companies in nearly every sector imaginable. Manufacturing combined is the single largest payroll in the state, with the exception of government.

Utah has industry recognized expertise in **Medical Equipment Manufacturing, Aerospace Product and Parts Manufacturing, and Outdoor Products Manufacturing**. These three industries employ more than 32,000 people in Utah, representing a competitive advantage compared to the national average.

Moving Consumer Goods

From Logan in the north to St. George in the south, Utah's unmatched transportation infrastructure has earned it a reputation for building mutually beneficial relationships with companies in the logistics and distribution sectors. Utah's network of rails, roads and airports provide the backbone of Utah's freight network.

Approximately

4.3k
Manufacturing
Businesses in Utah
(Utah Manufacturers
Association)

Manufacturing
Employs Nearly

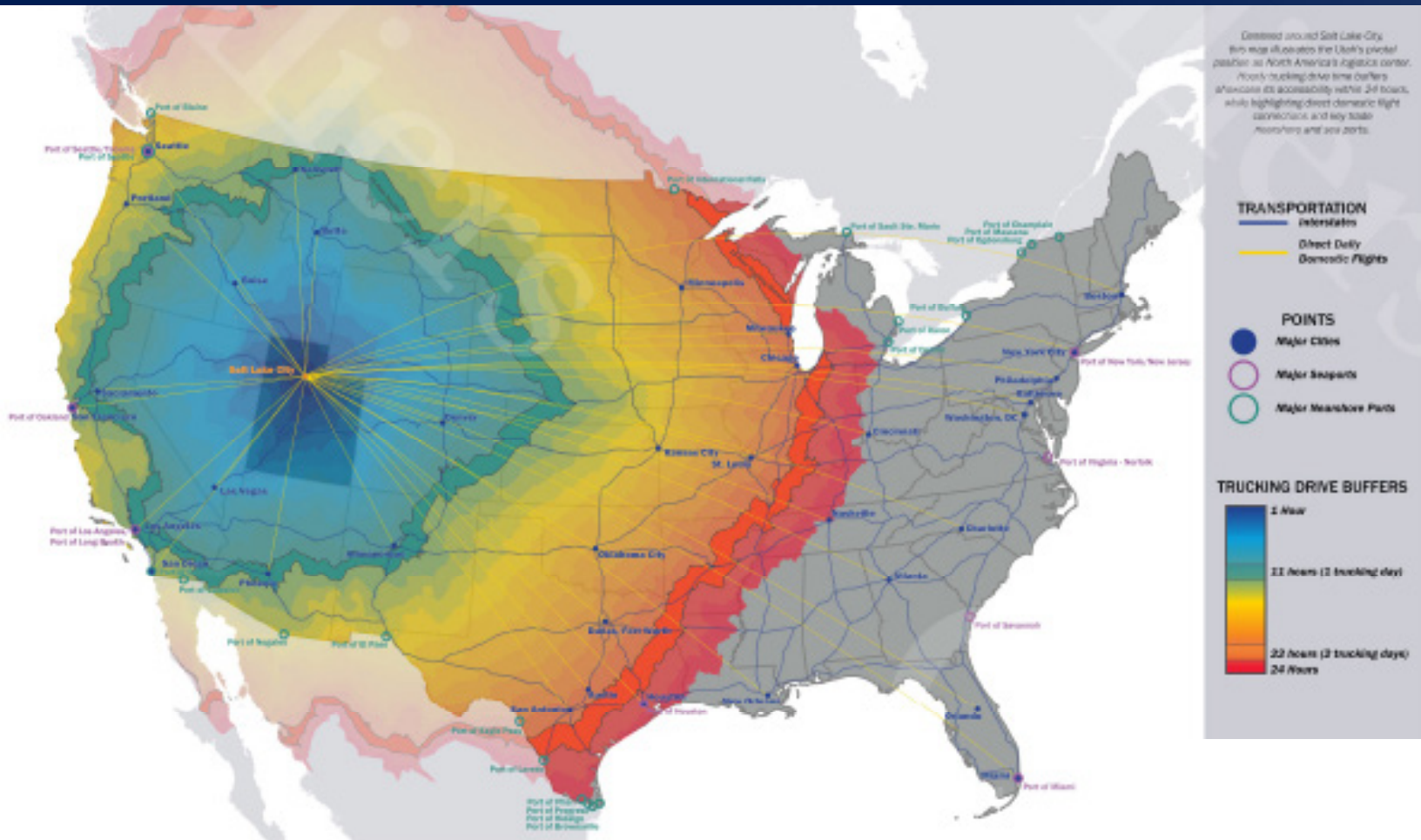
9%
of Utah's Workforce
(ESRI BAO)

Medical Equipment
& Supplies
Manufacturing in Utah

\$9.6B
in 2022
(Utah Department of Workforce
Services))



Yes, Utah



Crossroads of the West

Utah's central proximity in the Western U.S. give it a logistical advantage and unmatched infrastructure network of roads, rail and airports. "The Crossroads of the West," Utah exports \$12 billion annually.

SLC Intl Airport ranks

5th

Global On-Time Performance
(Cirium, 2023)

Utah Exports

\$12B

in Goods & Services Annually
(Utah Department of Transportation)

Utah is Home to Over

15k

Trucking Companies
(Utah Department of Transportation)



Utah Provides a High Quality of Life

Utah is a national leader in high job growth, low unemployment, low cost of doing business, and talented labor. Utah regularly ranks among the best states for business, careers, living, health, and quality of life. Utah provides an array of employment opportunities in various industries and offers its residents numerous lifestyle options that range from quiet rural settings to thriving urban centers.

Most of Utah's population resides along The Wasatch Front, roughly 150 miles of contiguous cities and communities, running predominantly north-south along the I-15 corridor and the western slope of the Wasatch Mountain range, from Brigham City to Nephi.

Utah is world-renowned for its bounty of public lands and year-round recreational opportunities ranging from mountain wilderness to desert landscapes. Utah has five national parks, six national forests, numerous state parks and recreation areas, and is home to "The Greatest Snow on Earth" with over a dozen ski resorts.

Utah's Population Demographics (2022)



3.4M
Population



1.1M
Households



3.04
Average Household Size

Utah's Income Factors (2022)



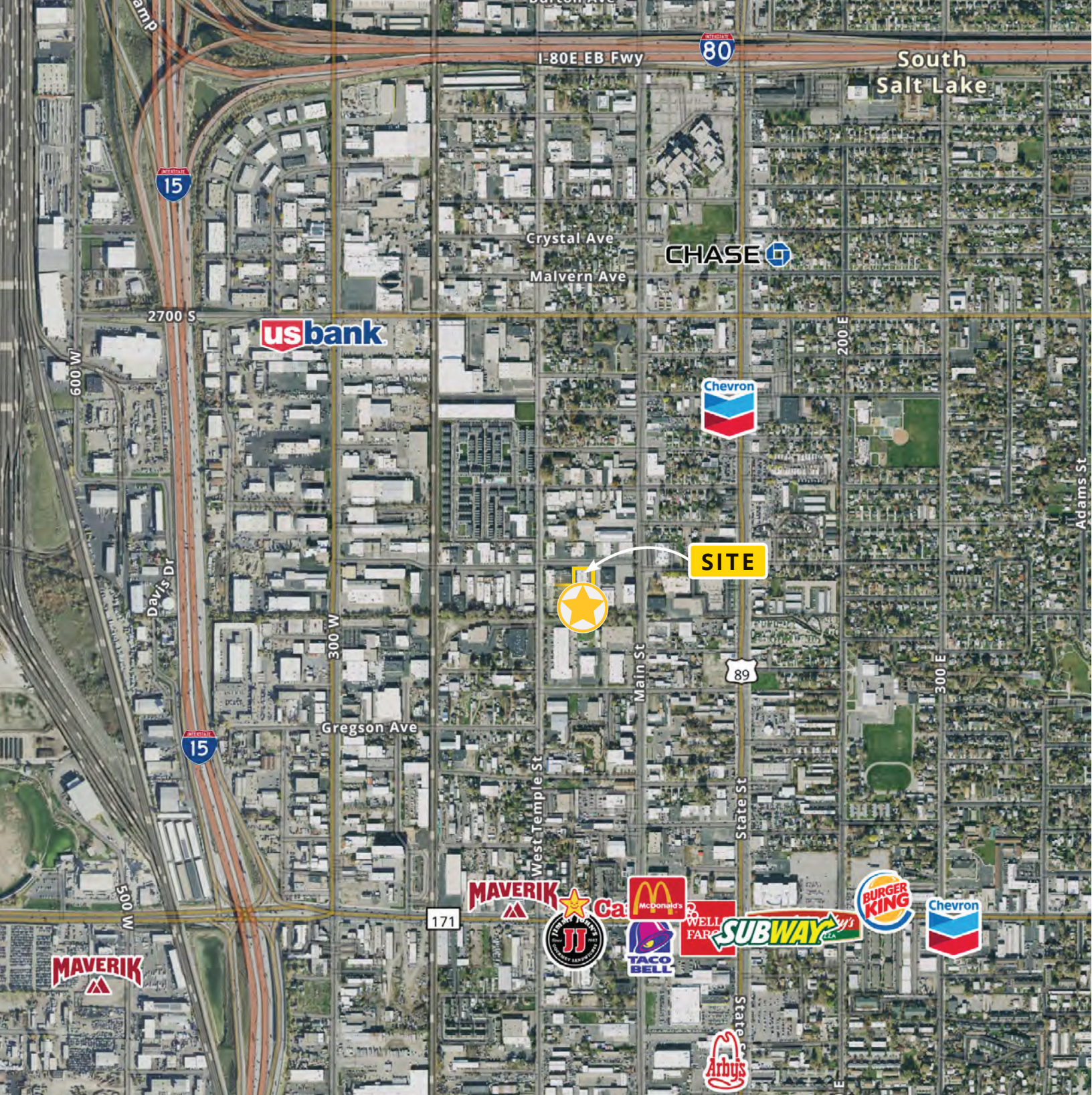
\$89.4K
Median Household Income



\$105.8K
Average Household Income



\$34.3K
Per Capita Income



Colliers
 111 S. Main St., Suite 2200
 Salt Lake City, UT 84111
 Main: +1 801 947 8300
 colliers.com

Skyler Smith
 Senior Associate
 +1 801 946 6423
 skyler.smith@colliers.com

Jeremy Terry
 Vice President
 +1 801 671 9349
 jeremy.terry@colliers.com

This document has been prepared by Colliers International for advertising and general information only. Colliers International makes no guarantees, representations or warranties of any kind, expressed or implied, regarding the information including, but not limited to, warranties of content, accuracy and reliability. Any interested party should undertake their own inquiries as to the accuracy of the information. Colliers International excludes unequivocally all inferred or implied terms, conditions and warranties arising out of this document and excludes all liability for loss and damages arising there from. This publication is the copyrighted property of Colliers International and/or its licensor(s). ©2026. All rights reserved.