

FOR LEASE

101@ Trimble

Office Park
SANTA CLARA | CA

±14,662 SF

Full Floor Available Now

\$2.50 Full Service

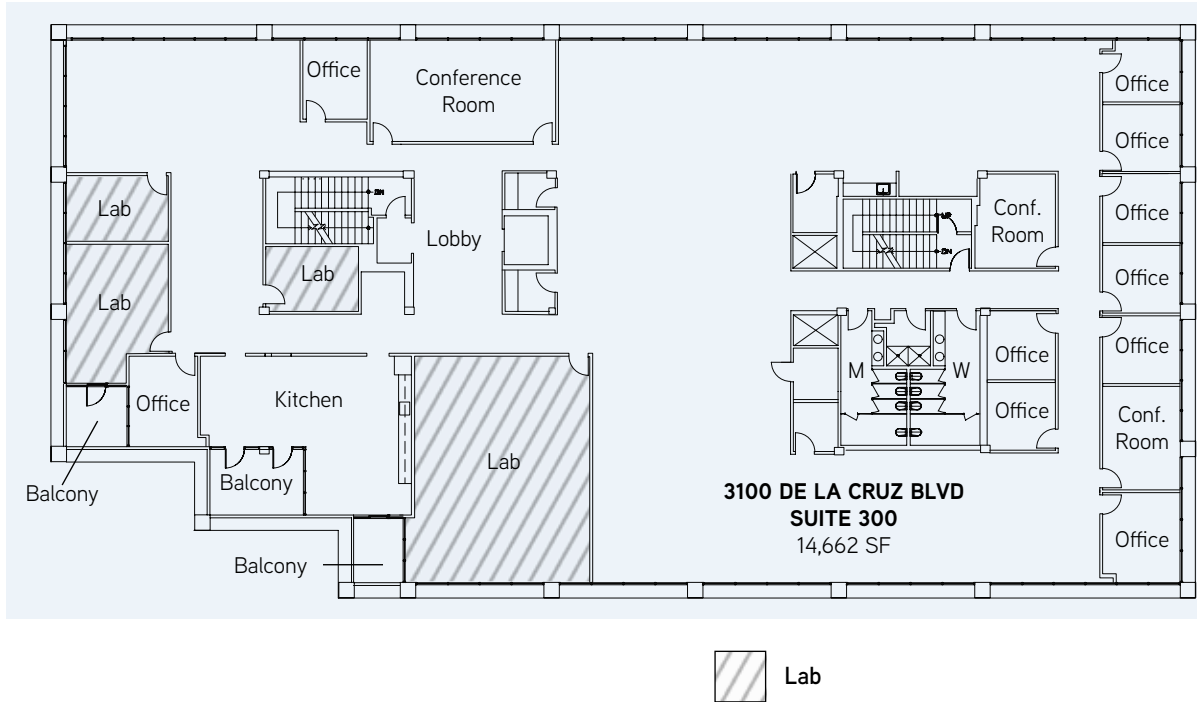
3100 De La Cruz Blvd.
Suite 300



Colliers International
450 West Santa Clara Street
San Jose, CA 95113
P: +1 408 282 3800

Dion Campisi, SIOR
+1 408 282 38758
dion.campisi@colliers.com
Lic. No. 01321946

Paige Gammon
+1 408 282 3918
paige.gammon@colliers.com
Lic. No. 01866062



BUILDING SPECIFICATIONS

Rent	\$2.50 F.S.
Term	TBD
Available	Now
Improv. Allowance	TBD
Building Age	1998
Size	±14,662 SF
Layout	Entire Floor Available
	10 Private Offices
	3 Conference Rooms
	4 Labs
	Large Open Area for Cubicles
	Kitchen
Parking	3/1,000 Free Parking

HIGHLIGHTS

- Full floor available
- Below market price
- Exterior building signage available
- Internet Service Providers include Comcast, AT&T, and WiLine
- AT&T has fiber to all buildings
- 3/1,000 free parking

LOCATION

- Desirable Santa Clara location
- Freeway exposure
- Immediate access to Highway 101
- Close access to Highways 87, 237, 880 and 280
- San Jose International Airport: 3 miles
- Santa Clara Caltrain Station: 3 miles
- Levi's Stadium: 4 miles

AMENITIES

- On-site property management
- Free conference facilities
- Eastern Barbecue and Lily Sandwiches & Coffee on-site
- On-site dry cleaners
- FedEx and UPS drop boxes
- Rivermark Village: 1 mile
- Bay Club: 3 miles
- Mercado Santa Clara: 3 miles

\$2.50
FULL SERVICE

