

FOR LEASE > SALEM



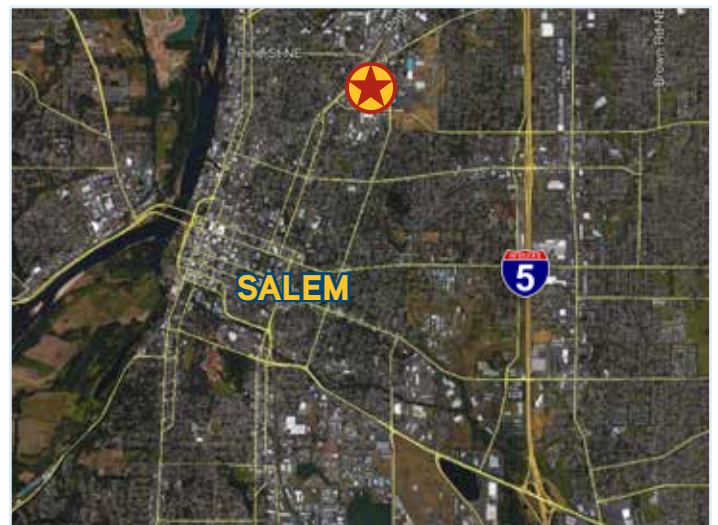
# Former Service Center

1375 WOODROW STREET NE SALEM, OREGON 97301



## Available Space Overview

- 28,894 SF ground floor
- Off-street parking
- Fenced yard includes parking for 20+ cars or vans
- Approximate dimensions of 240' x 120
- Free span building (no columns)
- Rail service possible
- Office showroom and mezzanine storage



**CALL FOR RATES**

Paul F. Breuer, SIOR  
Senior Vice President  
+1 503 499 0061  
Portland, Oregon  
paul.breuer@colliers.com

Jerry Matson, SIOR, MBA  
Vice President  
+1 503 499 0077  
Portland, Oregon  
jerry.matson@colliers.com

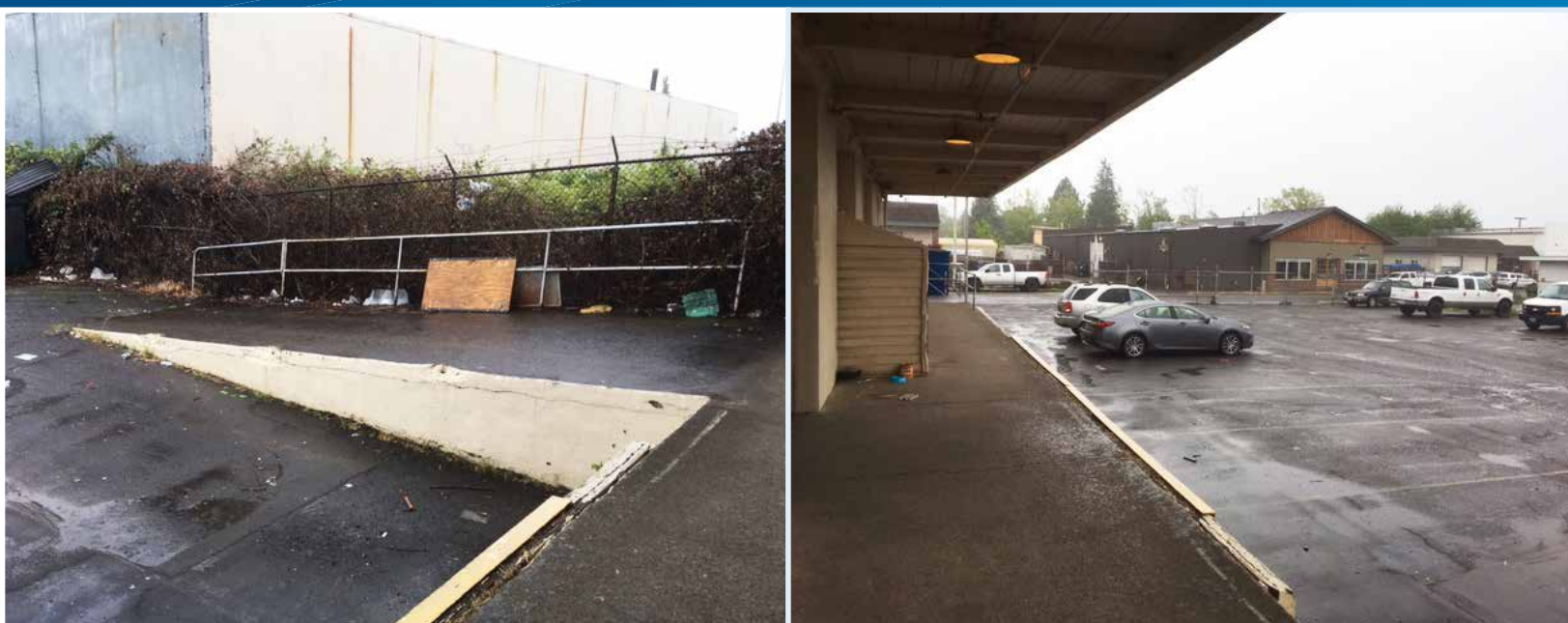
Brian Yoakum  
Associate  
+1 503 499 0070  
Portland, Oregon  
brian.yoakum@colliers.com

COLLIERS INTERNATIONAL  
851 SW Sixth Avenue  
Suite 1200  
Portland, Oregon 97204  
www.colliers.com

FOR LEASE > SALEM

# Former Service Center

1375 WOODROW STREET NE SALEM, OREGON 97301



This document has been prepared by Colliers International for advertising and general information only. Colliers International makes no guarantees, representations or warranties of any kind, expressed or implied, regarding the information including, but not limited to, warranties of content, accuracy and reliability. Any interested party should undertake their own inquiries as to the accuracy of the information. Colliers International excludes unequivocally all inferred or implied terms, conditions and warranties arising out of this document and excludes all liability for loss and damages arising there from. This publication is the copyrighted property of Colliers International and/or its licensor(s). ©2016. All rights reserved.

