

FOR SALE OR LEASE > PROFESSIONAL OFFICE COMPLEX



Parlier Professional Center

13658 - 13688 E. MANNING AVENUE, PARLIER, CALIFORNIA



Property Summary > Parlier Professional Center Office Complex

- > New Class "A" Office Development
- > Lease or Sale Opportunities
- > Phase I - Under Construction
- > 3,275 SF Available
- > Can Accommodate Users up to 14,000 SF
- > Zoning CM
- > \$1.65 PSF, Triple Net (NNN) includes a \$40.00 PSF Tenant Improvement Allowance

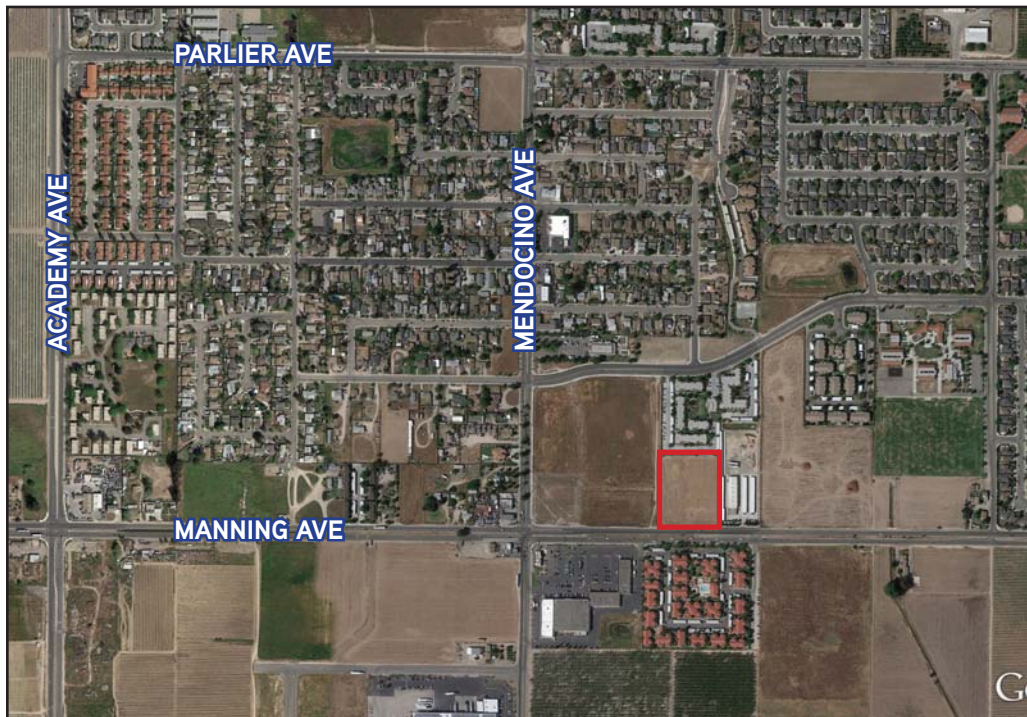
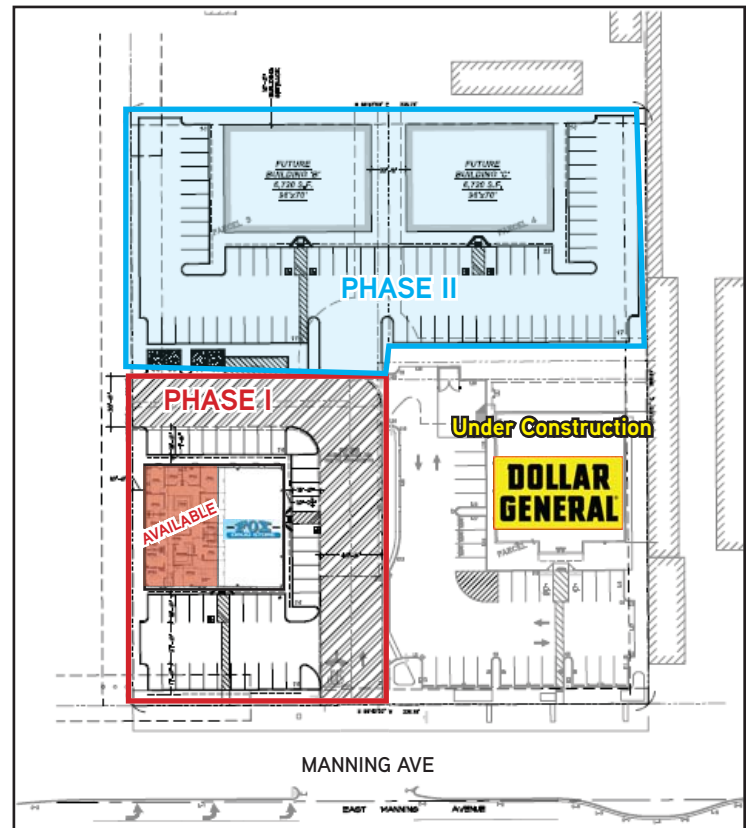
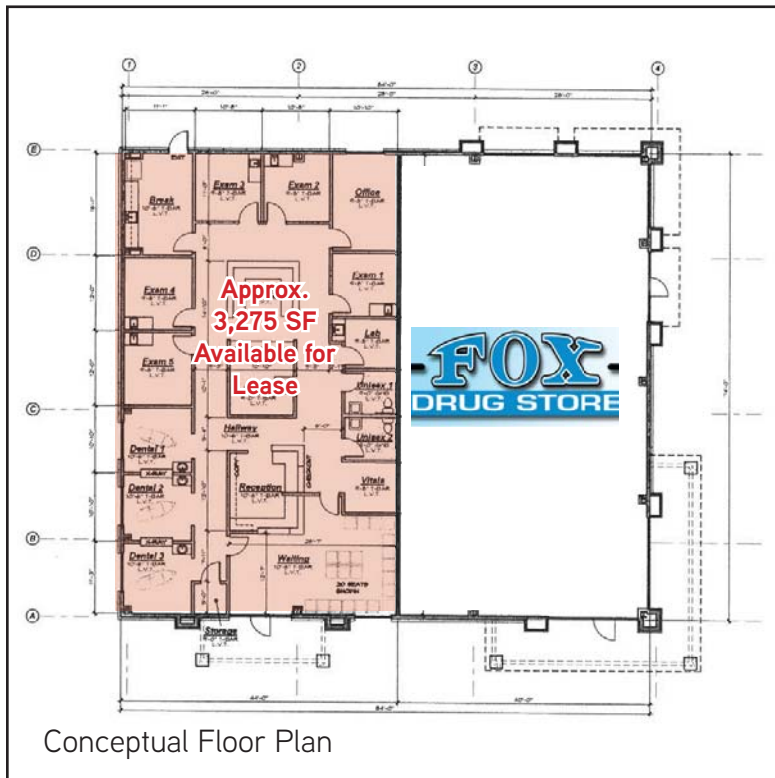
AGENT: BOBBY FENA, SIOR
559 256 2436
FRESNO, CA
bobby.fena@colliers.com
BRE #00590204

AGENT: BEAU PLUMLEE
559 256 2443
FRESNO, CA
beau.plumlee@colliers.com
BRE #01269167

COLLIERS INTERNATIONAL
7485 N. Palm Avenue, #110
Fresno, CA 93711
www.colliers.com/fresno

13688 E. Manning Avenue > Site Plan / Floor Plan / Aerial

PARLIER, CALIFORNIA



Contact

AGENT: BOBBY FENA, SIOR
559 256 2436
FRESNO, CA
bobby.fena@colliers.com
BRE #00590204

AGENT: BEAU PLUMLEE
559 256 2443
FRESNO, CA
beau.plumlee@colliers.com
BRE #01269167

COLLIERS INTERNATIONAL
7485 N. Palm Avenue, #110
Fresno, CA 93711
www.colliers.com/fresno

This document has been prepared by Colliers International for advertising and general information only. Colliers International makes no guarantees, representations or warranties of any kind, expressed or implied, regarding the information including, but not limited to, warranties of content, accuracy and reliability. Any interested party should undertake their own inquiries as to the accuracy of the information. Colliers International excludes unequivocally all inferred or implied terms, conditions and warranties arising out of this document and excludes all liability for loss and damages arising there from. This publication is the copyrighted property of Colliers International and/or its licensor(s). ©2017. All rights reserved.

