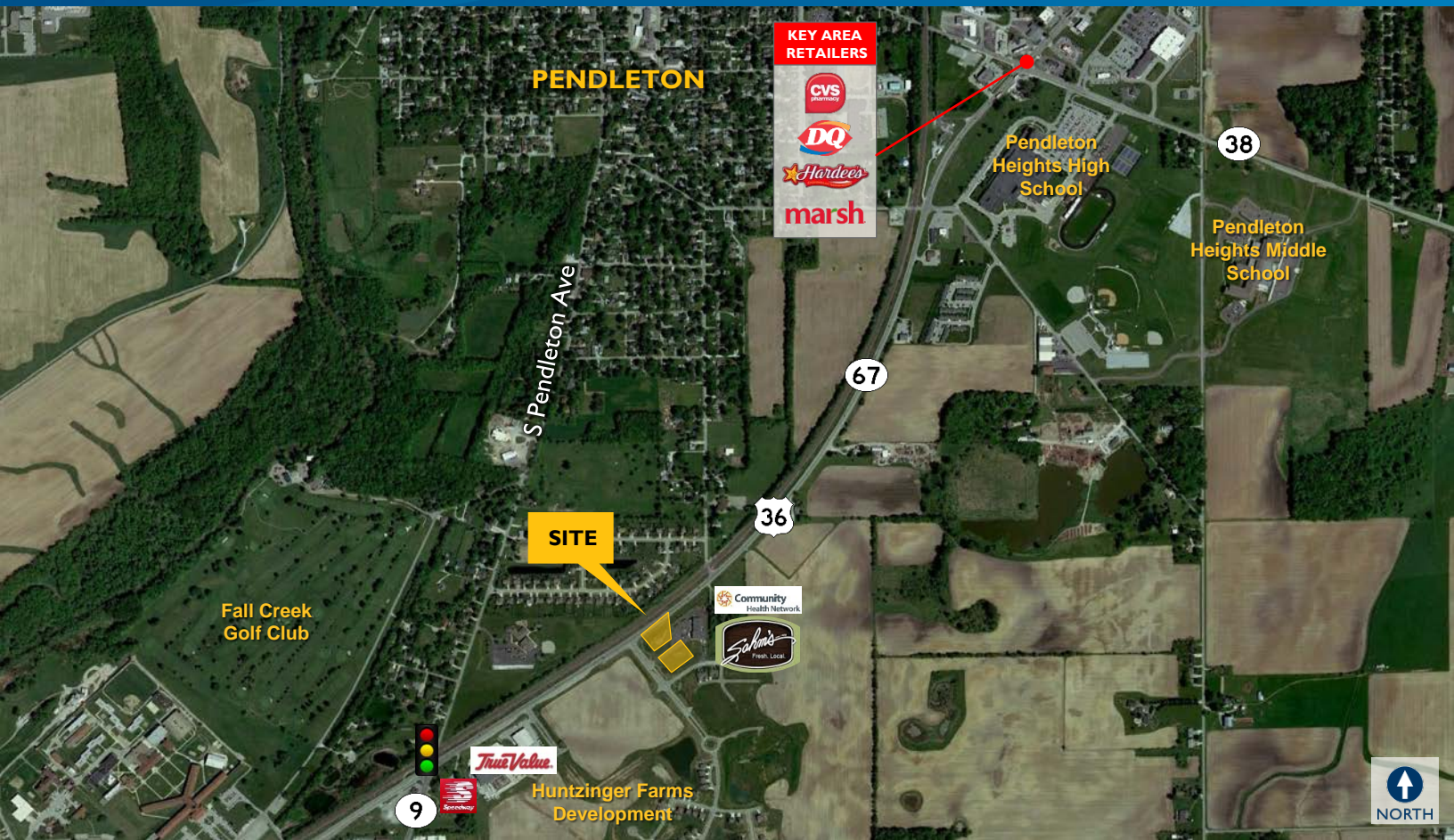


FOR SALE, BTS OR LEASE > LAND



Huntzinger Shoppes

SR 67 / US 36, PENDLETON, IN



Property Highlights

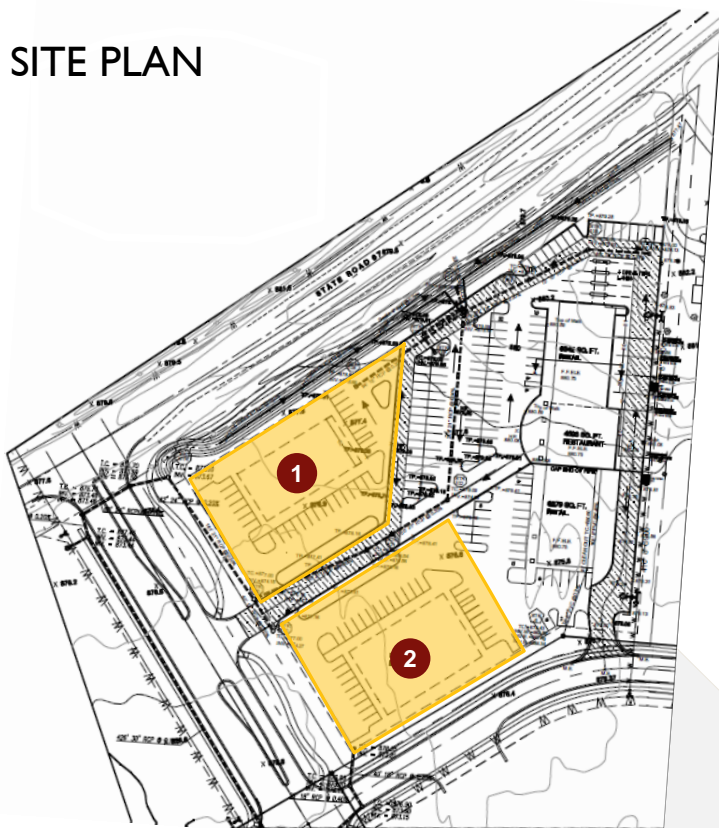
- > 1.09 acre & 1.02 acre parcels located directly off SR 67 / US 36 via Huntzinger Boulevard
- > Land lease, sale or build-to-suit opportunities
- > Lots ready for immediate development
- > All utilities in place
- > Join existing retail strip center anchored by Sahn's Restaurant & Community Health
- > Located in the mixed-use Huntzinger Farms Master Planned Development
- > Accessible to the most desirable employers in the Indianapolis area including Anderson, Carmel, Fishers and Noblesville
- > Annual Average Daily Traffic:
 - SR 67 / US 36: 13,345 vehicles

JIMMY COHOAT
317 713 2124
jimmy.cohoat@colliers.com

COLLIERS INTERNATIONAL
241 N Pennsylvania St, Suite 300
Indianapolis, IN 46204
colliers.com

Site Plan, Aerial & Demographics

SITE PLAN



DEMOGRAPHICS

	3 Miles	5 Miles	10 Miles
Population	11,655	20,016	107,774
Total Households	3,156	6,275	40,737
Average Household Income	\$75,230	\$74,162	\$66,904

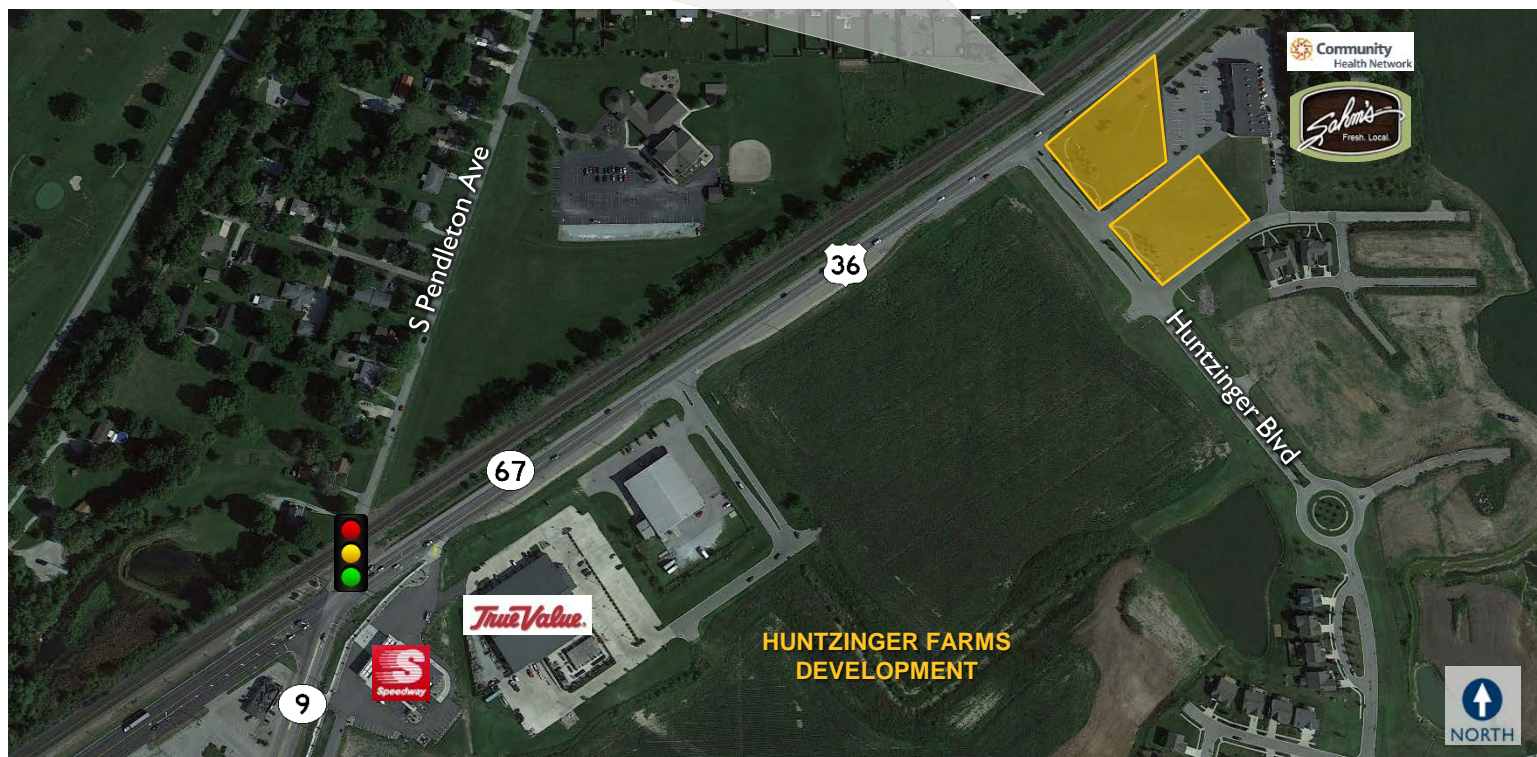
DEMOGRAPHICS 2018 (PROJECTED)

	3 Miles	5 Miles	10 Miles
Population	11,641	20,021	110,225
Total Households	3,153	6,279	41,473
Average Household Income	\$88,278	\$86,718	\$79,500

KEY DESTINATIONS

MILEAGE

Anderson	8
Fishers	15
Noblesville	15
Carmel	20
Indianapolis	26
Fort Wayne	83
Chicago	164



This document has been prepared by Colliers International for advertising and general information only. Colliers International makes no guarantees, representations or warranties of any kind, expressed or implied, regarding the information including, but not limited to, warranties of content, accuracy and reliability. Any interested party should undertake their own inquiries as to the accuracy of the information. Colliers International excludes unequivocally all inferred or implied terms, conditions and warranties arising out of this document and excludes all liability for loss and damages arising there from. This publication is the copyrighted property of Colliers International and/or its licensor(s). ©2015. All rights reserved.

