

FOR SALE | DEVELOPMENT/IOS SITE

4333 S. 50th St. @ Port Sutton Rd.
Tampa, FL 33619



Jan Boltres, CCIM
Executive Vice President
+1 727 204 0877
jan.boltres@colliers.com

Mia Jarrell, MCR
Executive Vice President
+1 813 785 5535
mia.jarrell@colliers.com

Colliers



- 1.475± Acres
- CI (Commercial Intensive) Zoning
- 4,000± SF Existing Structure
- 326' Frontage on S. 50th St.
- 39,000 Average Daily Traffic Count
- Immediate Port Access

Subject Property



Tampa Electric
Bayside Power Plant

Tampa Metal
Headquarters & Port

Pendola Point Rd.

Martin Transport Terminal
Pendola Point Rd.

Yara Tampa CN-9 Terminal

Puraglobe USA

Circle K

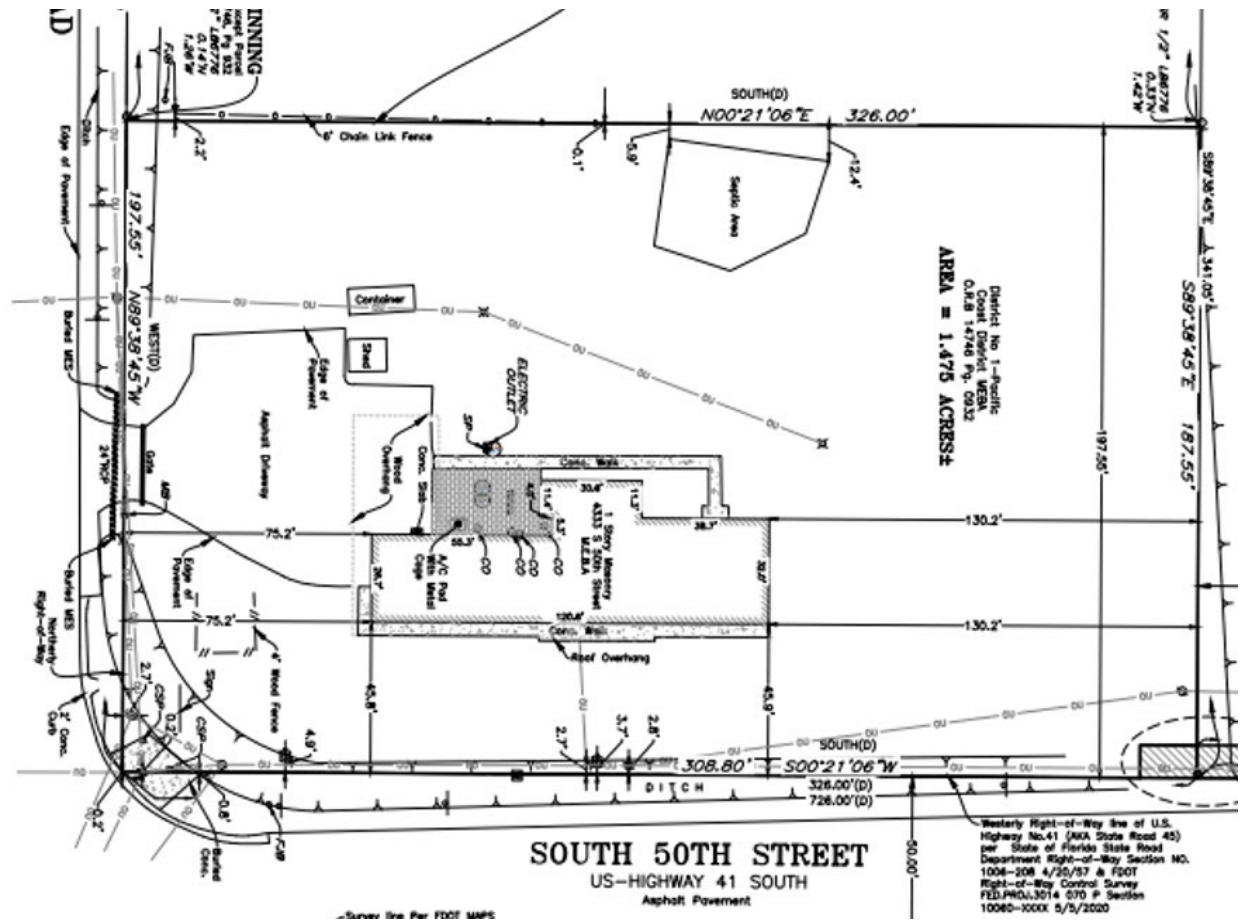
Madison Ave

Certified Fleet Services

4333 South Blvd

Image Landsat/Copernicus

Property Survey



Contact

Jan Boltres, CCIM

Executive Vice President

+1 727 204 0877

jan.boltres@colliers.com

Mia Jarrell, MCR

Executive Vice President

+1 813 785 5535

mia.jarrell@colliers.com

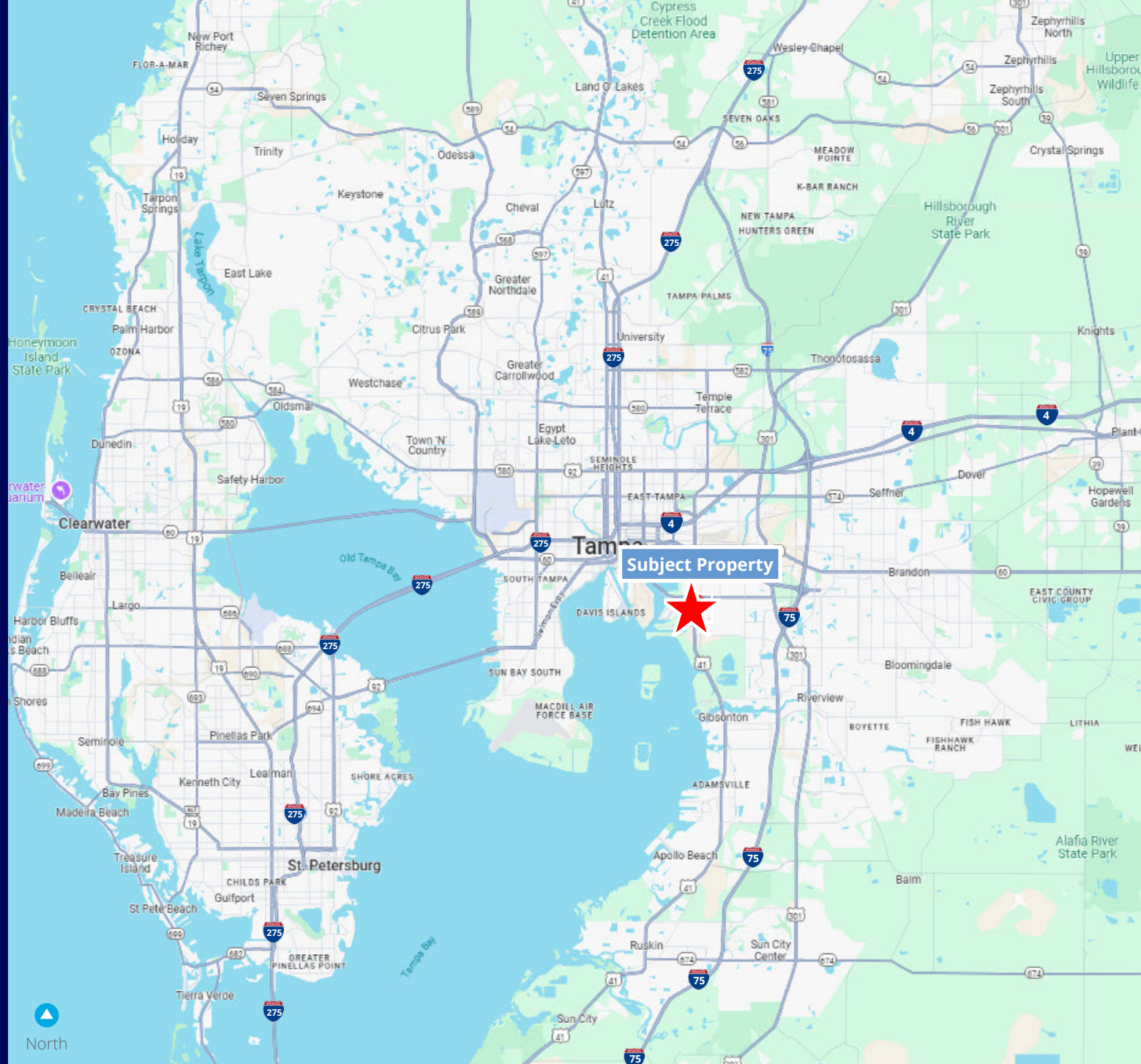
Colliers

Colliers

4830 W. Kennedy Blvd., Suite 300

Tampa, FL 33609

www.colliers.com



This document has been prepared by Colliers International for advertising and general information only. Colliers International makes no guarantees, representations or warranties of any kind, expressed or implied, regarding the information including, but not limited to, warranties of content, accuracy and reliability. Any interested party should undertake their own inquiries as to the accuracy of the information. Colliers International excludes unequivocally all inferred or implied terms, conditions and warranties arising out of this document and excludes all liability for loss and damages arising there from. This publication is the copyrighted property of Colliers International and/or its licensor(s). ©2025. All rights reserved.