

FOR LEASE

colliers.com/memphis  VIEW ONLINE

5395

Estate Office Drive

Suite 2

MEMPHIS | TN 38119

Estate Office Park 1,649 SF Available

Located in the heart of East Memphis, Estate Office Park offers visibility from Poplar Avenue & convenience to retail, restaurants, banks & neighborhoods.

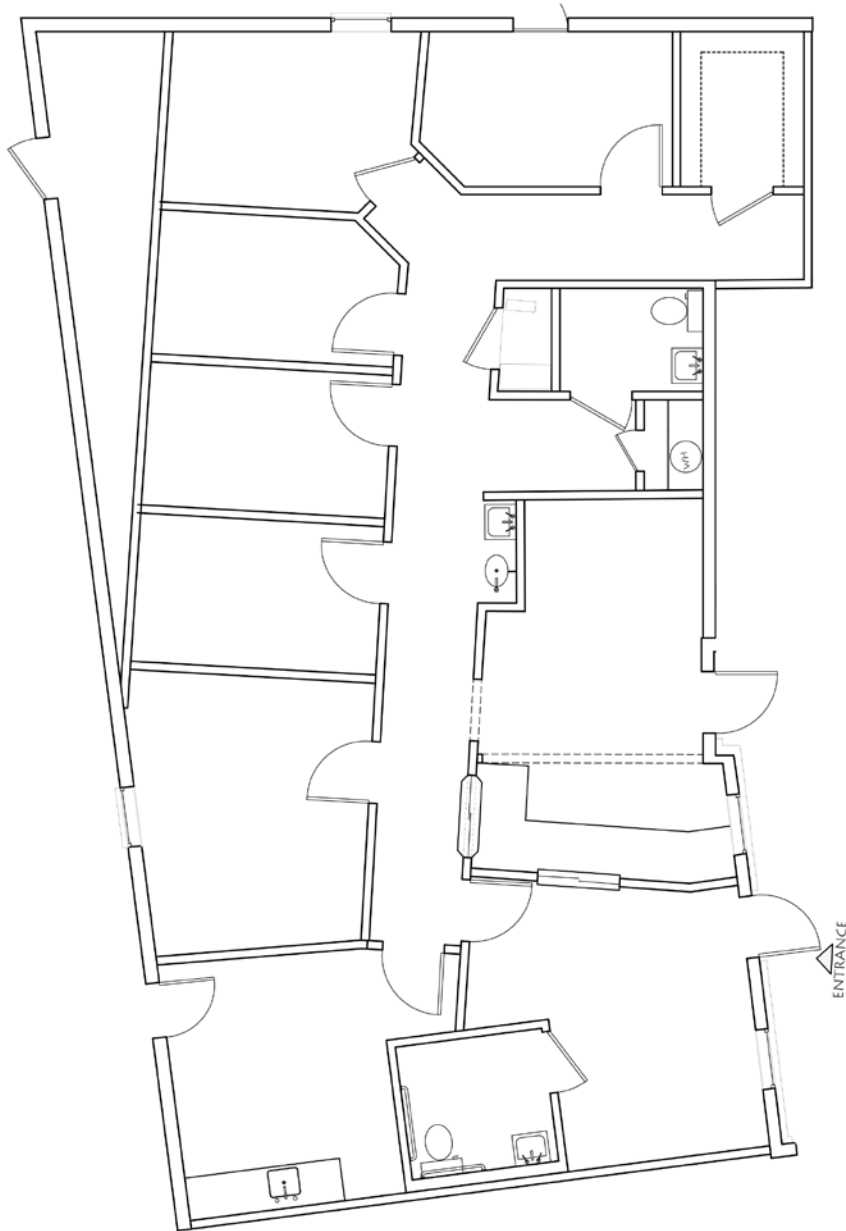


Colliers International
6363 Poplar Avenue | Suite 400
Memphis, TN 38119
+1 901 375 4800

Laura Taylor
Vice President | Office
+1 901 312 5772
MEMPHIS, TN
laura.taylor@colliers.com

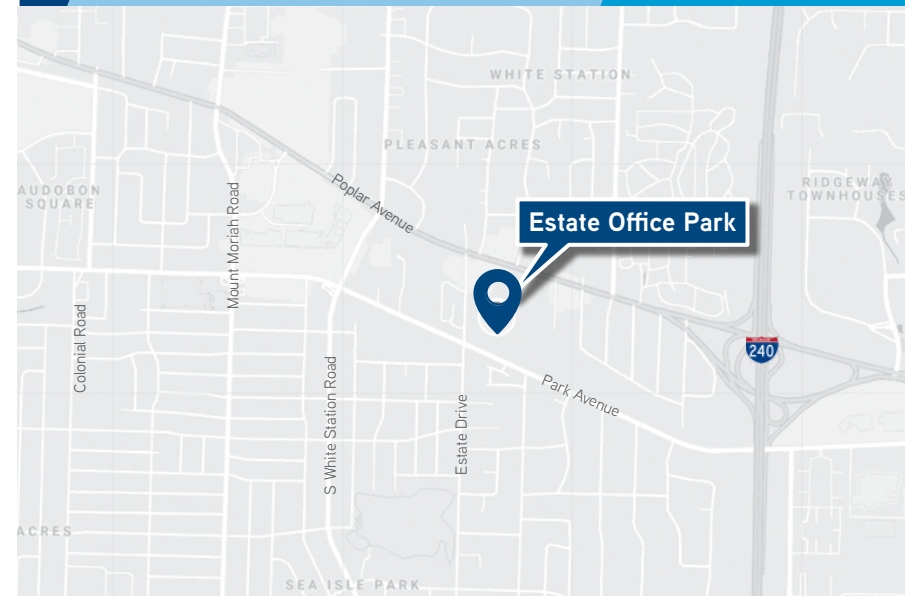
Ron Riley
Senior Vice President | Office
+1 901 312 5787
MEMPHIS, TN
ron.riley@colliers.com

FLOOR PLAN



BUILDING SPECIFICATIONS


- > 1,649 SF available
- > FIRST FLOOR OFFICES
- > Private suites & front-door parking
- > Marquee signage on Estate Drive
- > Tranquil setting and copious landscaping
- > 2 minutes from I-240 / Poplar interchange
- > Immediate access to restaurants, banking, retail and neighborhoods



AERIAL



FOR LEASE

colliers.com/memphis  VIEW ONLINE



ESTATE

Office Park

Laura Taylor
Vice President | Office
+1 901 312 5772
MEMPHIS, TN
laura.taylor@colliers.com

Ron Riley
Senior Vice President | Office
+1 901 312 5787
MEMPHIS, TN
ron.riley@colliers.com

This document has been prepared by Colliers International for advertising and general information only. Colliers International makes no guarantees, representations or warranties of any kind, expressed or implied, regarding the information including, but not limited to, warranties of content, accuracy and reliability. Any interested party should undertake their own inquiries as to the accuracy of the information. Colliers International excludes unequivocally all inferred or implied terms, conditions and warranties arising out of this document and excludes all liability for loss and damages arising there from. This publication is the copyrighted property of Colliers International and/or its licensor(s). ©2019. All rights reserved.

Colliers International
6363 Poplar Avenue | Suite 400
Memphis, TN 38119
P: +1 901 375 4800

