



FOR LEASE
17911 Von Karman
Irvine, CA

17911
VON KARMAN



One of the premier office properties in Orange County's illustrious and highly desired Airport Area office market. The building is centrally located in Irvine's finest business campus, Irvine Concourse, a 46 acre master planned, mixed use business center.

Building Features

- 5-Story, 104,375 square foot premiere office property
- Beautifully landscaped outdoor terrace offers work and social areas with bistro-style seating
- Parking 4:1,000
- Convenient Access to 405, 73, and 55 Freeways
- Easy Access to John Wayne Airport
- Nearby Amenities include Equinox Fitness Club, Embassy Suites, Wyndham Hotel, El Torito Grill, McCormicks & Schmick's, plus a dozen more restaurants
- Access to Irvine iShuttle www.irvineshuttle.net

Colliers International makes no guarantees, representations or warranties of any kind, expressed or implied, regarding the information including, but not limited to, warranties of content, accuracy and reliability. This publication is the copyrighted property of Colliers International and /or its licensor(s). 2010. All rights reserved.

For more information, contact:

ROBERT G. CAUDILL
Regional Director
License No. 00813140
949 724 5550
bob.caudill@colliers.com

RYAN WARD
Senior Associate
License No. 01480671
949 724 5525
ryan.ward@colliers.com

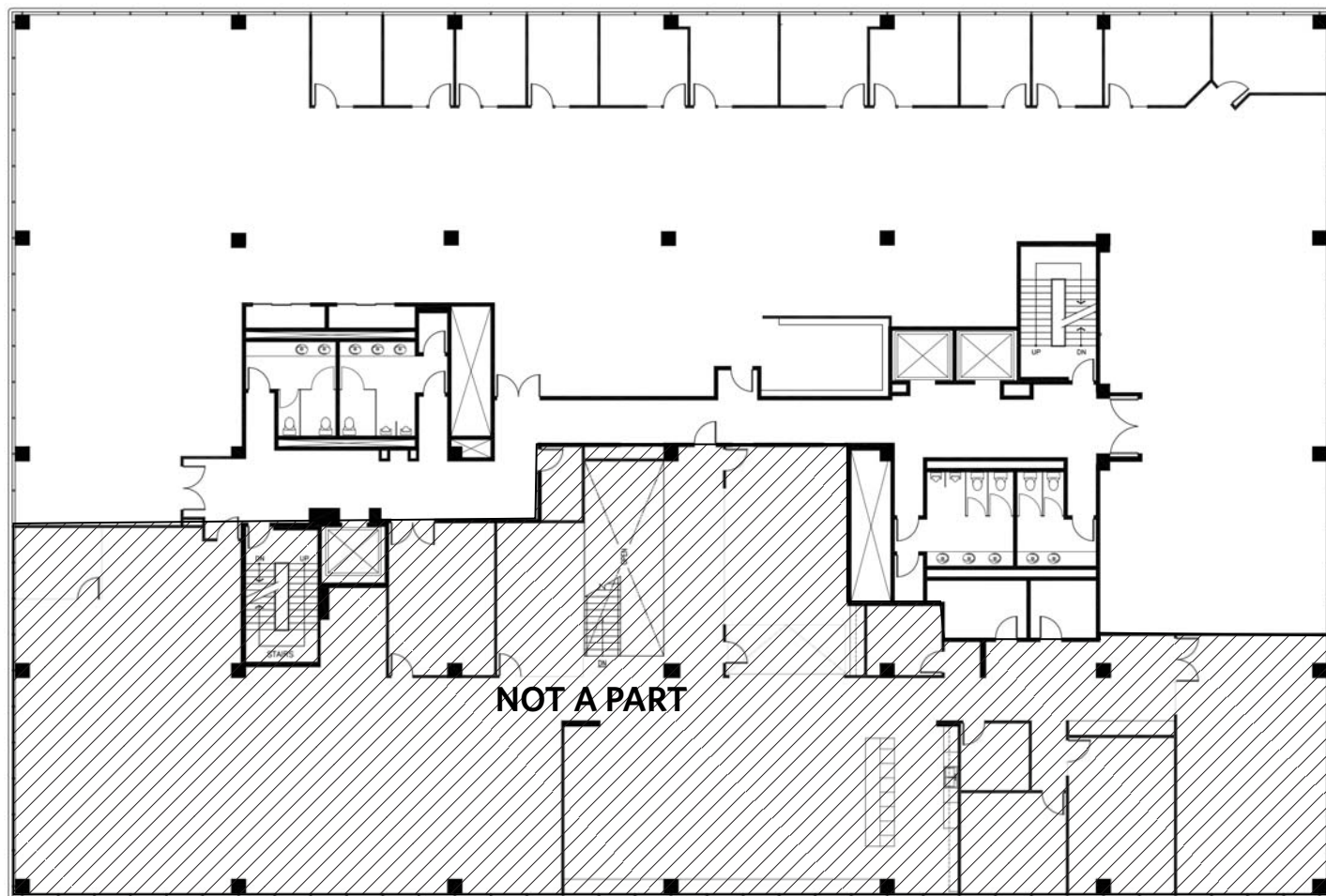




FOR LEASE
17911 Von Karman
Irvine, CA

17911
VON KARMAN

Suite 350 - 11,801 Square Feet



Colliers International makes no guarantees, representations or warranties of any kind, expressed or implied, regarding the information including, but not limited to, warranties of content, accuracy and reliability. This publication is the copyrighted property of Colliers International and /or its licensor(s). 2010. All rights reserved.

ROBERT G. CAUDILL
Regional Director
License No. 00813140
949 724 5550
bob.caudill@colliers.com

RYAN WARD
Senior Associate
License No. 01480671
949 724 5525
ryan.ward@colliers.com

