



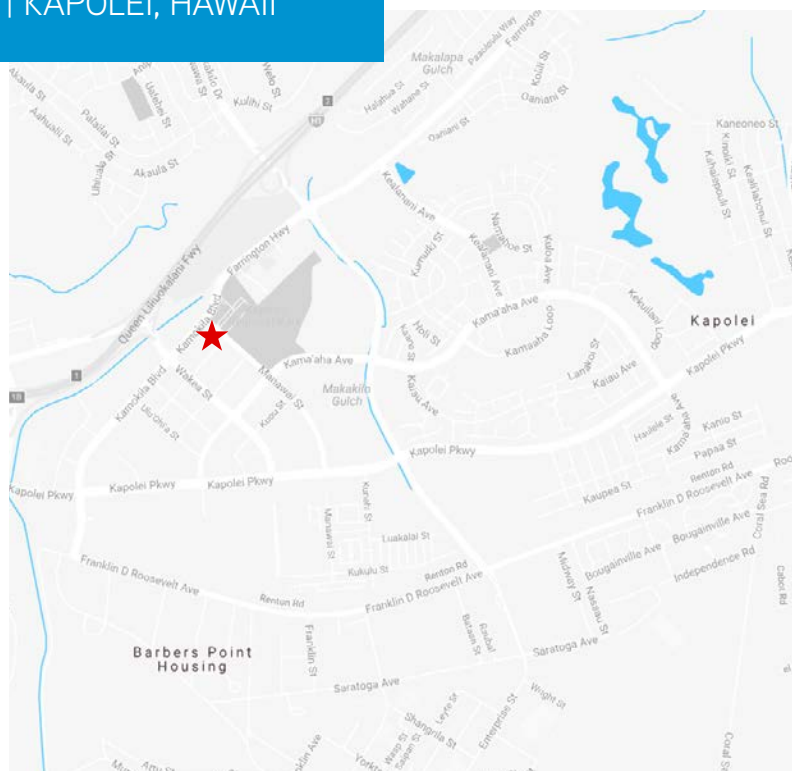
## FOR LEASE > CAMPBELL SQUARE

1001 KAMOKILA BLVD | KAPOLEI, HAWAII

### PROPERTY DESCRIPTION

Campbell Square consists of two Class A buildings with a center courtyard. The buildings enjoy 24-hour security and are located in the heart of Oahu's second city on the corner of Kamokila Boulevard and Manawai Street. Parking for tenants and customers is free in the covered parking structure.

Area:	Kapolei
Base Rent:	\$2.50 PSF/Mo - Ground Floors \$2.00 PSF/Mo - Upper Floors
Operating Expenses:	\$1.68 PSF/Mo (estimated 2018)



NEAL E. HAFNER (S)  
Office Services Division  
808 523 8313  
[neal.hafner@colliers.com](mailto:neal.hafner@colliers.com)

JANNA NAKAGAWA FRASH (S)  
Office Services Division  
808 230 3794  
[janna.frash@colliers.com](mailto:janna.frash@colliers.com)

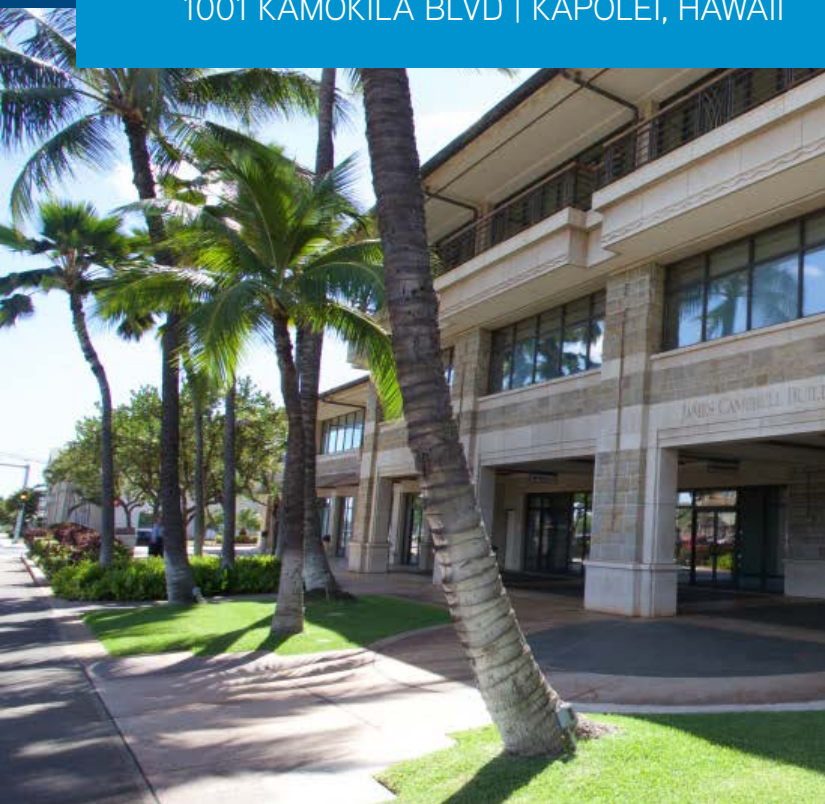
Colliers International | Hawaii  
220 S. King Street, Suite 1800  
Honolulu, Hawaii 96813  
[colliers.com/hawaii](http://colliers.com/hawaii)





# FOR LEASE > CAMPBELL SQUARE

1001 KAMOKILA BLVD | KAPOLEI, HAWAII



## FEATURES & BENEFITS

- > Class A office building
- > 24-hour security and free tenant/customer parking
- > Plush landscape grounds, courtyard and bus line
- > After hours A/C available
- > Earned prestigious Energy Star award

## AVAILABLE SPACES

### Kapolei Building

Suite 133 – 836 SF

Suite 205 – 2,393 SF

Suite 259 – 2,488 SF

Suite 305 – 6,112 SF\*

Suite 311 – 1,222 SF

### James Campbell Building

Suite 142 – 664 SF

*\*Can be demised*

NEAL E. HAFNER (S)  
Office Services Division  
808 523 8313  
[neal.hafner@colliers.com](mailto:neal.hafner@colliers.com)

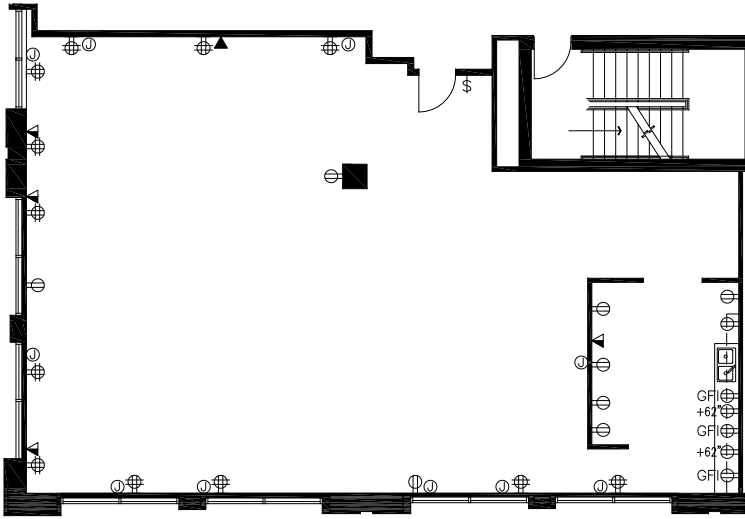
JANNA NAKAGAWA FRASH (S)  
Office Services Division  
808 230 3794  
[janna.frash@colliers.com](mailto:janna.frash@colliers.com)

Colliers International | Hawaii  
220 S. King Street, Suite 1800  
Honolulu,, Hawaii 96813  
[colliers.com/hawaii](http://colliers.com/hawaii)

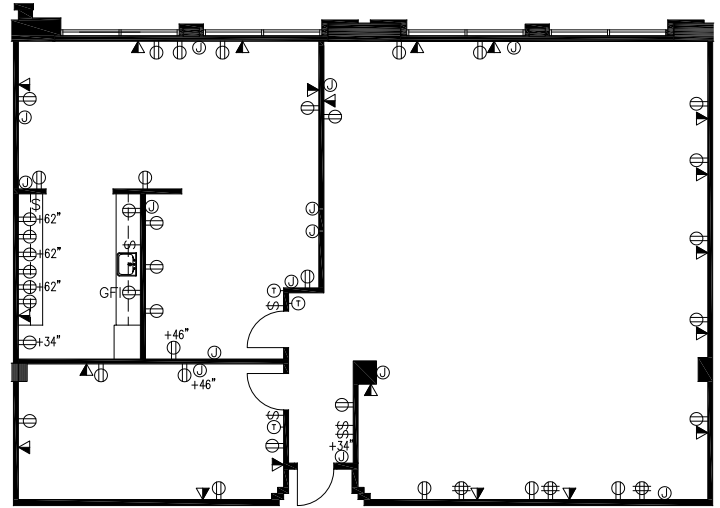


# FOR LEASE > CAMPBELL SQUARE

1001 KAMOKILA BLVD | KAPOLEI, HAWAII



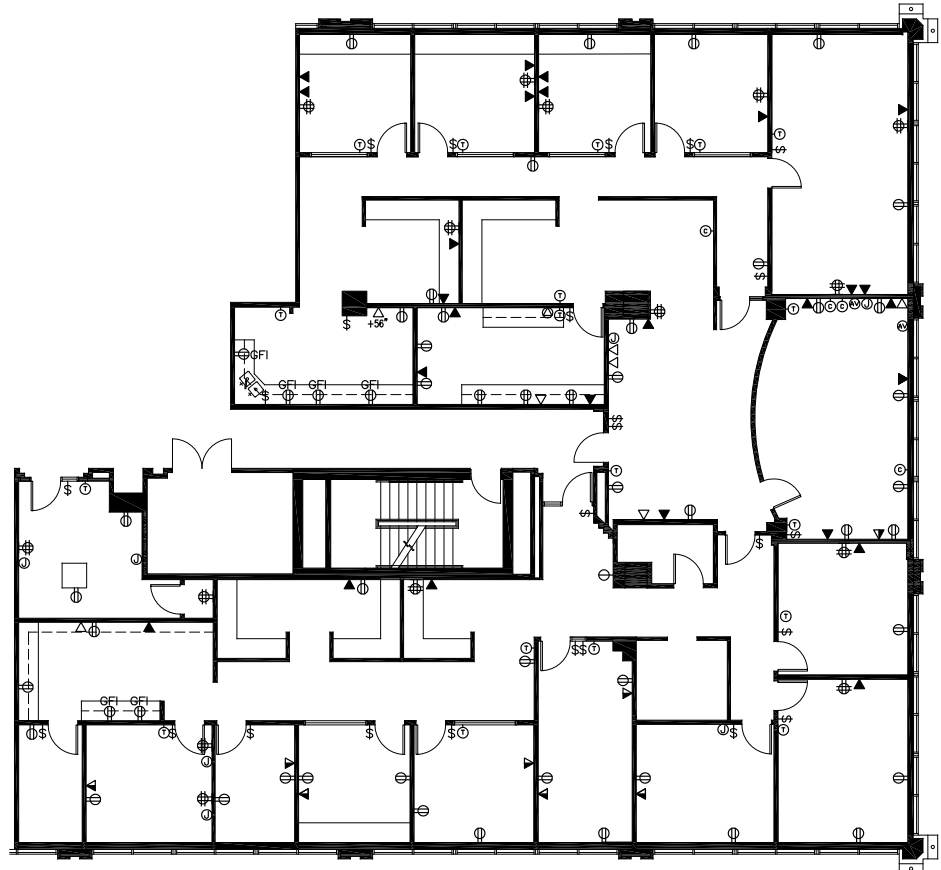
Unit 205 (2,393 SF)



Unit 259 (2,488 SF)

## SPACE DESCRIPTIONS

- > **Suite 133** – Ground floor space with one private office
- > **Suite 205** – Large open space with kitchenette and great natural light
- > **Suite 259** – Large open space, conference room, kitchenette
- > **Suite 305** – Large densely built out office with formal waiting area, conference room, private office, huddle space, mail room, and kitchenette
- > **Suite 311** – Available 10/1/18 – efficient office space with open work space with one private office and huddle room.
- > **Suite 142** – Available 8/1/18 – ground floor interior office space with direct access from building lobby



Unit 305 (6,112 SF)



NEAL E. HAFNER (S)  
Office Services Division  
808 523 8313  
[neal.hafner@colliers.com](mailto:neal.hafner@colliers.com)

JANNA NAKAGAWA FRASH (S)  
Office Services Division  
808 230 3794  
[janna.frash@colliers.com](mailto:janna.frash@colliers.com)

Copyright © 2018 Colliers International  
This document has been prepared by Colliers International for advertising and general information only. Colliers International makes no guarantees, representations or warranties of any kind, expressed or implied, regarding the information including, but not limited to, warranties of content, accuracy and reliability. Any interested party should undertake their own inquiries as to the accuracy of the information. Colliers International excludes unequivocally all inferred or implied terms, conditions and warranties arising out of this document and excludes all liability for loss and damages arising there from. This publication is the copyrighted property of Colliers International and/or its licensor(s). All rights reserved.