

9 miles
TO DOWNTOWN PORTLAND

5 miles
TO PORT OF PORTLAND

10 miles
TO PDX AIRPORT

11 miles
TO 

6 miles
TO 

170 miles
TO SEATTLE, WA

119 miles
TO EUGENE, OR



Brian Yoakum, SIOR
Senior Vice President
+1 503 499 0070
brian.yoakum@colliers.com

Jerry Matson, SIOR, MBA
Executive Vice President
+1 503 499 0077
jerry.matson@colliers.com

Tom Knecht, SIOR
Vice President
+1 503 499 0069
tom.knecht@colliers.com

Colliers
851 SW Sixth Avenue, Suite 1200
Portland, Oregon 97204
Main: +1 503 223 3123
colliers.com

For Lease/ 34,734 SF Industrial

Upland Distribution Center
7605 N Upland Drive, Portland, OR 97203

Located in the Rivergate submarket with immediate access to the Port of Portland's Terminal 6 and just 2.5 miles from Interstate 5, the west coast's most critical logistics and transportation corridor, Upland Distribution Center is comprised of over 258,000 SF of high-visibility industrial space. Each building is rail served, enclosed with security fencing and includes substantial yard storage areas.



\$0.72/PSF/Mo. - warehouse shell
\$1.10/PSF/Mo. - office surcharge

Vacant and Available NOW

Accelerating success.

Contact us:

Brian Yoakum, SIOR
Senior Vice President
+1 503 499 0070
brian.yoakum@colliers.com

Jerry Matson, SIOR, MBA
Executive Vice President
+1 503 499 0077
jerry.matson@colliers.com

Tom Knecht, SIOR
Vice President
+1 503 499 0069
tom.knecht@colliers.com



Availability Overview

Located in one of Portland's most favorable submarkets

24' clear height

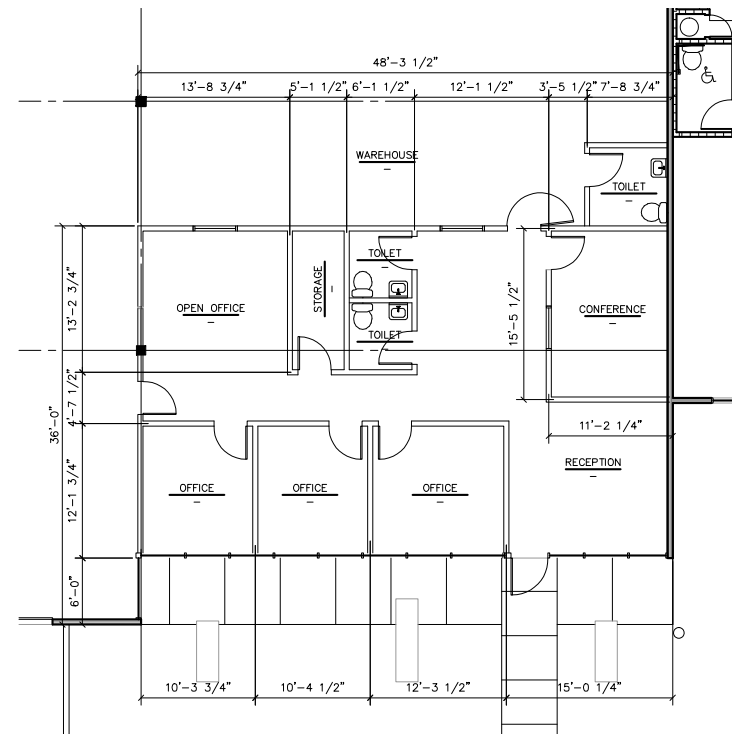
17+ auto spaces

Security fencing encloses the entire building

Excellent corporate neighborhood

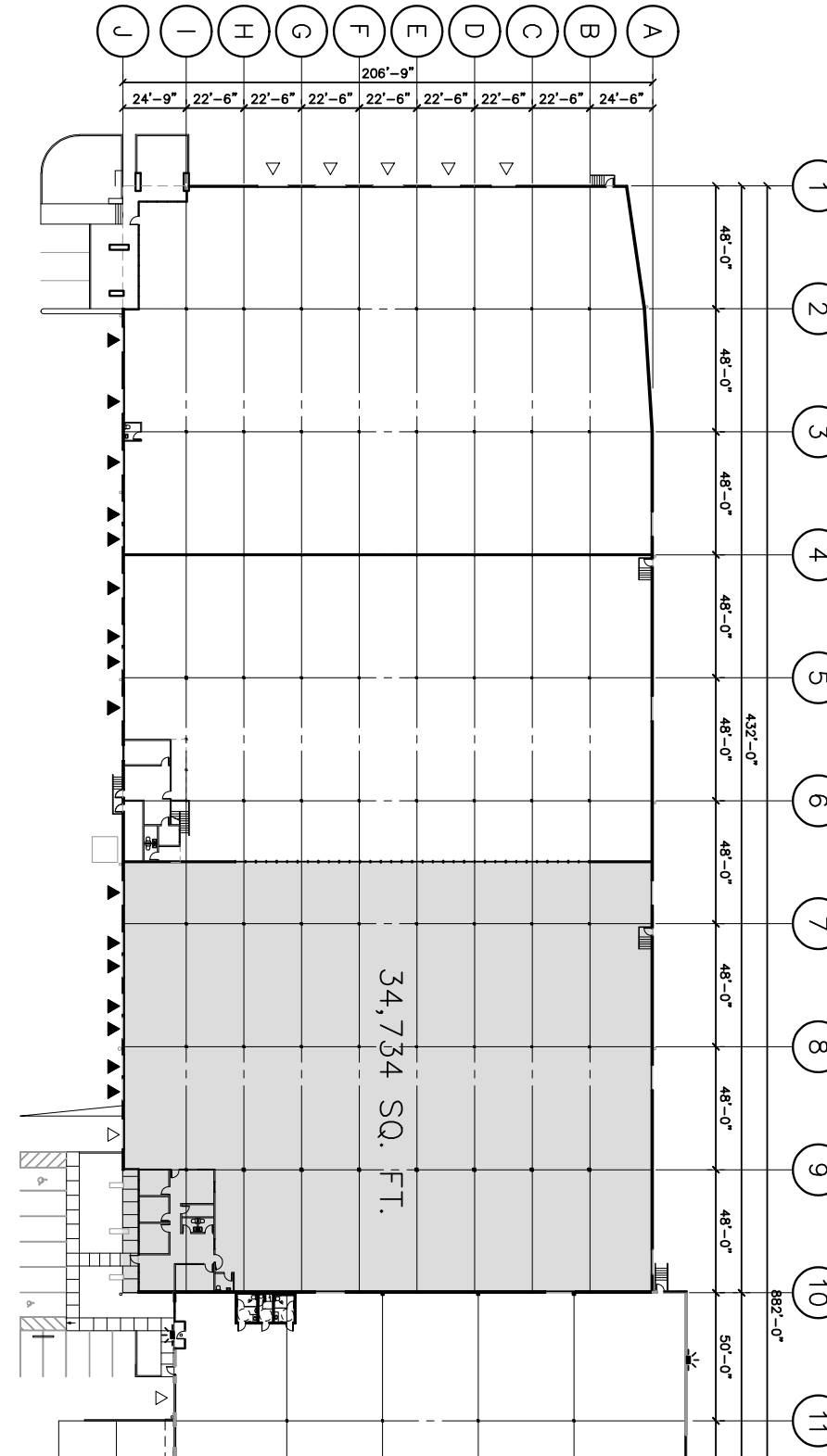
Refreshed office space

Office Floor Plan



7605 Floor Plan

- 33,734 SF warehouse
- 1,487 SF office
- 7 dock doors
- 1 grade door



Contact us:

Brian Yoakum, SIOR
Senior Vice President
+1 503 499 0070
brian.yoakum@colliers.com

Jerry Matson, SIOR, MBA
Executive Vice President
+1 503 499 0077
jerry.matson@colliers.com

Tom Knecht, SIOR
Vice President
+1 503 499 0069
tom.knecht@colliers.com