

FOR LEASE | ± 5,369 SF R&D CONDO

colliers.com  VIEW ONLINE

20 Maxwell

IRVINE, CA 92618

High Image R&D Condo

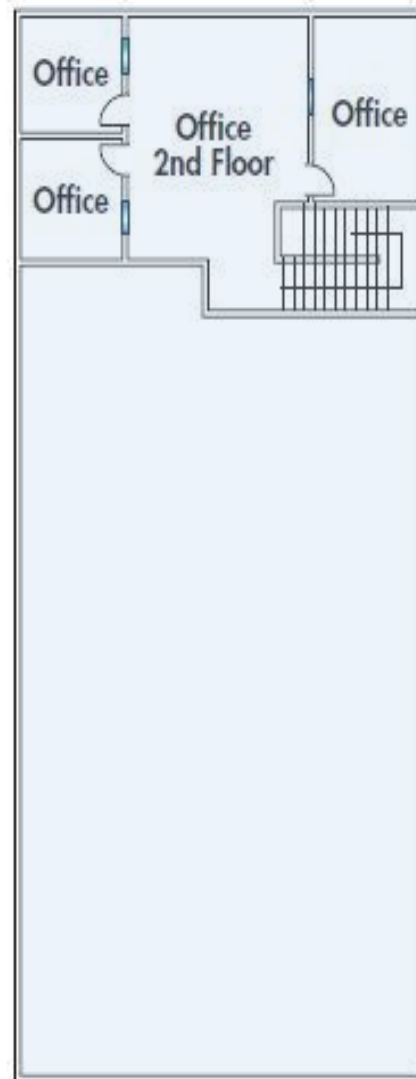
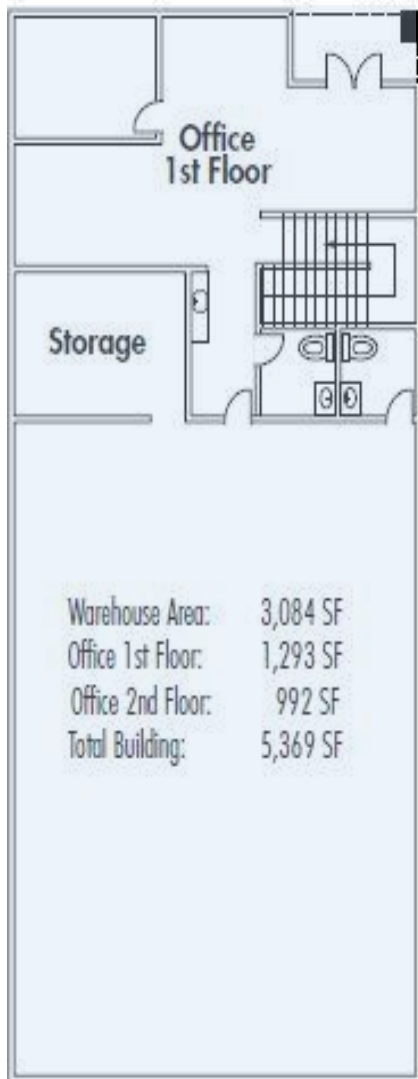
± 5,369 Total SF R&D Condo for Lease



Colliers International
3 Park Plaza | Suite 1200
Irvine, CA 92614
P: +1 949 724 5500

JOE WINKELMANN
Senior Vice President
+1 949 724 5704
joe.winkelmann@colliers.com
Lic. No. 01259378

TONY LOCHHEAD
Associate
+1 949 724 5702
tony.lochhead@colliers.com
Lic. No. 02000345



PREMISES

± 5,369 Total SF

±2,285 SF of Office

±3,084 SF of Warehouse

BUILDING FEATURES

- High Image R&D Condo
- Building signage available
- Close proximity to Irvine Spectrum Center and other retail amenities
- Fully Sprinklered
- Parking: 3.00/1,000
- Loading: 1 GL Door
- Warehouse Clearance Height: 22'
- Year Built: 2004
- Excellent access to 5 & 405 Freeways, and 133 Toll Road via Bake Parkway, Lake Forest Drive, and Irvine Center Drive.



FOR LEASE | ± 5,369 SF R&D CONDO

colliers.com  VIEW ONLINE

20 MAXWELL

Maxwell

Wald

Scientific Way

Lake Forest Drive

JOE WINKELMANN

Senior Vice President

+1 949 724 5704

joe.winkelmann@colliers.com

Lic. No. 01259378

TONY LOCHHEAD

Associate

+1 949 724 5702

tony.lochhead@colliers.com

Lic. No. 02000345

This document has been prepared by Colliers International for advertising and general information only. Colliers International makes no guarantees, representations or warranties of any kind, expressed or implied, regarding the information including, but not limited to, warranties of content, accuracy and reliability. Any interested party should undertake their own inquiries as to the accuracy of the information. Colliers International excludes unequivocally all inferred or implied terms, conditions and warranties arising out of this document and excludes all liability for loss and damages arising there from. This publication is the copyrighted property of Colliers International and/or its licensor(s). ©2019. All rights reserved.

Colliers International
1234 Main Street | Suite 100
City, ST 12345
P: +1 866 888 1234

