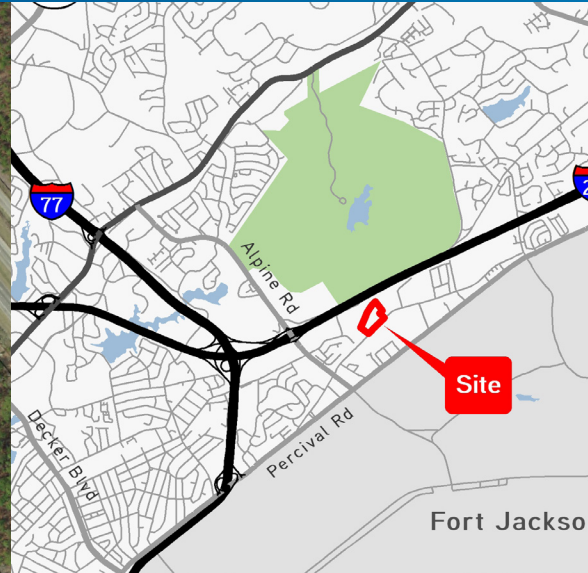


FOR SALE > ±16-ACRE INDUSTRIAL OR MULTIFAMILY SITE



# Old Percival Road

OLD PERCIVAL RD, COLUMBIA, SC 29223



## Old Percival Road > Industrial Property

This ±16-acre site is located in Northeast Columbia between I-20 and Percival Road and near I-77, giving it excellent interstate access. The site is also within miles of Cardinal Newman School and Sesquicentennial State Park.

## Property Amenities

- > ±16-acre site
- > Short distance to I-20 and I-77
- > Excellent interstate access
- > Water and sewer access
- > **Sale Price: \$640,000**
- > Zoned M-1 (Light Industrial)
- > Richland County
- > May be subdivided into tracts of ±4 acres

**DISCLOSURE:** Property is an Agent owned listing.

## Contact Us

MARSHALL HOEFER  
803 401 4220 | OFFICE  
803 960 9680 | CELL  
[marshall.hoefer@colliers.com](mailto:marshall.hoefer@colliers.com)

This document has been prepared by Colliers International for advertising and general information only. Colliers International makes no guarantees, representations or warranties of any kind, expressed or implied, regarding the information including, but not limited to, warranties of content, accuracy and reliability. Any interested party should undertake their own inquiries as to the accuracy of the information. Colliers International excludes unequivocally all inferred or implied terms, conditions and warranties arising out of this document and excludes all liability for loss and damages arising there from. This publication is the copyrighted property of Colliers International and/or its licensor(s). ©2012. All rights reserved.

**COLLIERS INTERNATIONAL**  
1301 Gervais Street, Suite 600  
Columbia, SC 29201  
[www.colliers.com](http://www.colliers.com)