

# Office Across from Lovelace Women's Hospital

4520 MONTGOMERY BLVD. NE, SUITE 7, ALBUQUERQUE, NM 87109

Accelerating success.



## Office Space For Lease

- > Lease Rate: \$13.00/SF/Yr
- > Lease Type: Full Service
- > Available Space: Suite 7 +/- 3,169 SF
- > Zoning: SU-1

## Building Amenities

- > Popular building in North I-25 submarket
- > Great centralized location on a major arterial
  - Across from Lovelace Women's Hospital
  - Signalized intersection with 45,500 VPD
- > Ideal for any professional office user
- > Monument signage on Montgomery Blvd
- > Many public transit options
- > Numerous restaurants and amenities nearby

## Contact Us

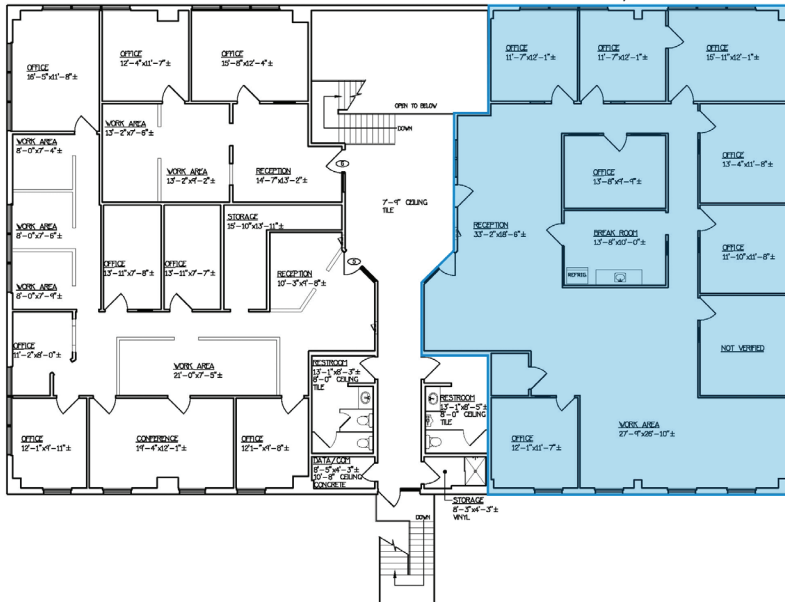
ANNE APICELLA  
VICE PRESIDENT  
+1 505 880 7059  
ALBUQUERQUE, NM  
LICENSE #39337  
[anne.apicella@colliers.com](mailto:anne.apicella@colliers.com)

COLLIERS INTERNATIONAL | NM  
MAIN +1 505 883 7676  
5051 Journal Center Blvd. NE, Suite 200  
Albuquerque, NM 87109  
[www.colliers.com](http://www.colliers.com)

# Floor Plan

**Colliers**  
INTERNATIONAL

**SUITE 7**  
**+/- 3,169 SF**



## Contact Us

COLLIERS INTERNATIONAL | NM | MAIN +1 505 883 7676 | 5051 Journal Center Blvd. NE, Ste. 200 | Albuquerque, NM 87109 | [www.colliers.com](http://www.colliers.com)

*Independently Owned and Operated* – The information contained herein was obtained from sources believed reliable; however, Colliers International makes no guarantees, warranties or representations as to the completeness or accuracy thereof. The presentation of this property is submitted subject to errors, omissions, change of price or conditions prior to sale or lease, or withdrawal without notice.