

FOR LEASE > OFFICE SPACE | \$12.00 - 13.50 SF/YR (NNN)

# Pioneer Medical Building

524 WEST 300 NORTH, PROVO UT 84601



## Property Information

- > Suite 203: 2,300 SF \$13.50/SF/YR NNN
- > Suite 103: 4,564 SF \$12.00/SF/YR NNN
- > Medical Office space
- > State St monument signage
- > Ample Parking
- > Close to many amenities and services Located four blocks from Utah Valley Hospital



Cody Black  
+1 801 687 0094  
cody.black@colliers.com

Shad Webb  
+1 435 459 0212  
shad.webb@colliers.com

*Colliers International*  
2100 Pleasant Grove Blvd. | Suite 200  
Pleasant Grove, UT 84062  
P: +1 801 610 1300



FOR LEASE > OFFICE SPACE | \$12.00 - 13.50 SF/YR (NNN)

# Pioneer Medical Building

524 WEST 300 NORTH, PROVO UT 84601

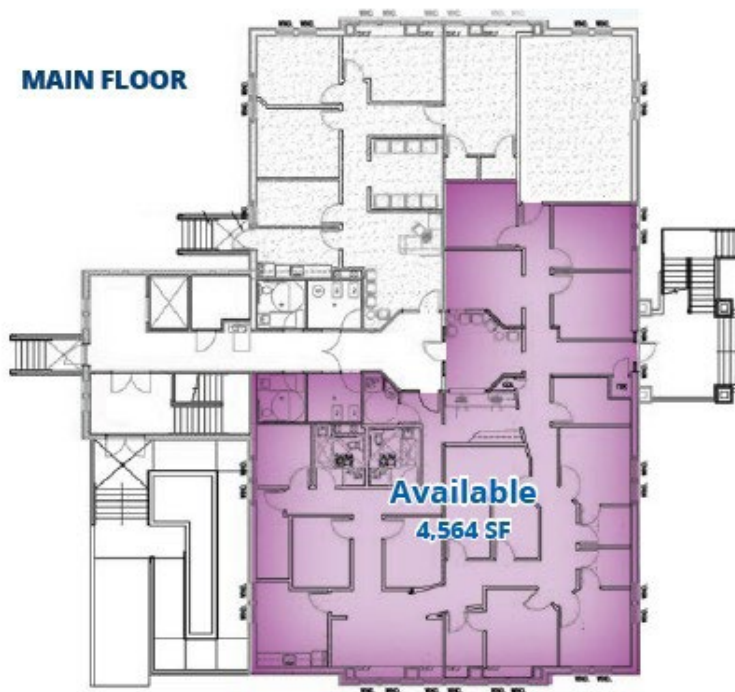


Colliers International  
2100 Pleasant Grove Blvd. | Suite 200  
Pleasant Grove, UT 84062  
P: +1 801 610 1300



# Pioneer Medical Building

## MAIN FLOOR



## SECOND FLOOR

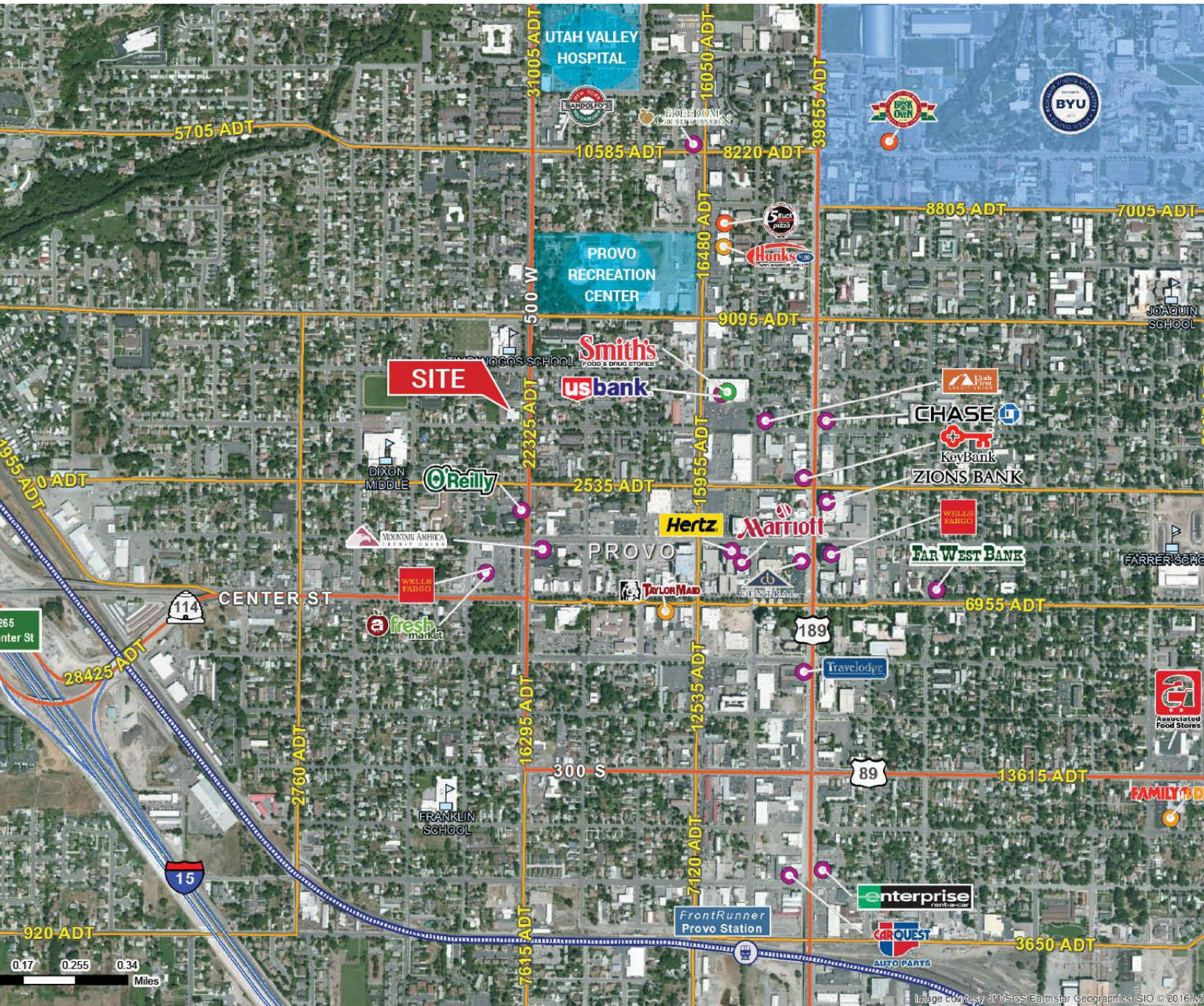




FOR LEASE > OFFICE SPACE | \$12.00 - 13.50 SF/YR (NNN)

# Pioneer Medical Building

524 WEST 300 NORTH, PROVO UT 84601



This document has been prepared by Colliers International for advertising and general information only. Colliers International makes no guarantees, representations or warranties of any kind, expressed or implied, regarding the information including, but not limited to, warranties of content, accuracy and reliability. Any interested party should undertake their own inquiries as to the accuracy of the information. Colliers International excludes unequivocally all inferred or implied terms, conditions and warranties arising out of this document and excludes all liability for loss and damages arising there from. This publication is the copyrighted property of Colliers International and/or its licensor(s). ©2017. All rights reserved.

Colliers International  
2100 Pleasant Grove Blvd. | Suite 200  
Pleasant Grove, UT 84062  
P: +1 801 610 1300

