

An aerial photograph of a large, wooded property. In the foreground, there is a dark blue lake with a small wooden dock and a floating net. The lake is surrounded by dense green trees. In the middle ground, there is a clearing with several buildings, including a large house and several smaller structures, and a parking lot with several cars. The background shows rolling green hills and a large, snow-capped mountain peak under a clear blue sky.

CAMP LAKEVIEW

- Includes Surrounding Properties
- Approximately 300 Acres
- 20 Separate Tax Parcels

Exclusively Listed By:

STEVE PELLUER

+1 425 453 3149

steve.pelluer@colliers.com

KIM HUTCHINS

+1 425 453 4547

kim.hutchins@colliers.com

ARVIN VANDER VEEN | SIOR

+1 206 654 0521

arvin.vanderveen@colliers.com



CAMP LAKEVIEW

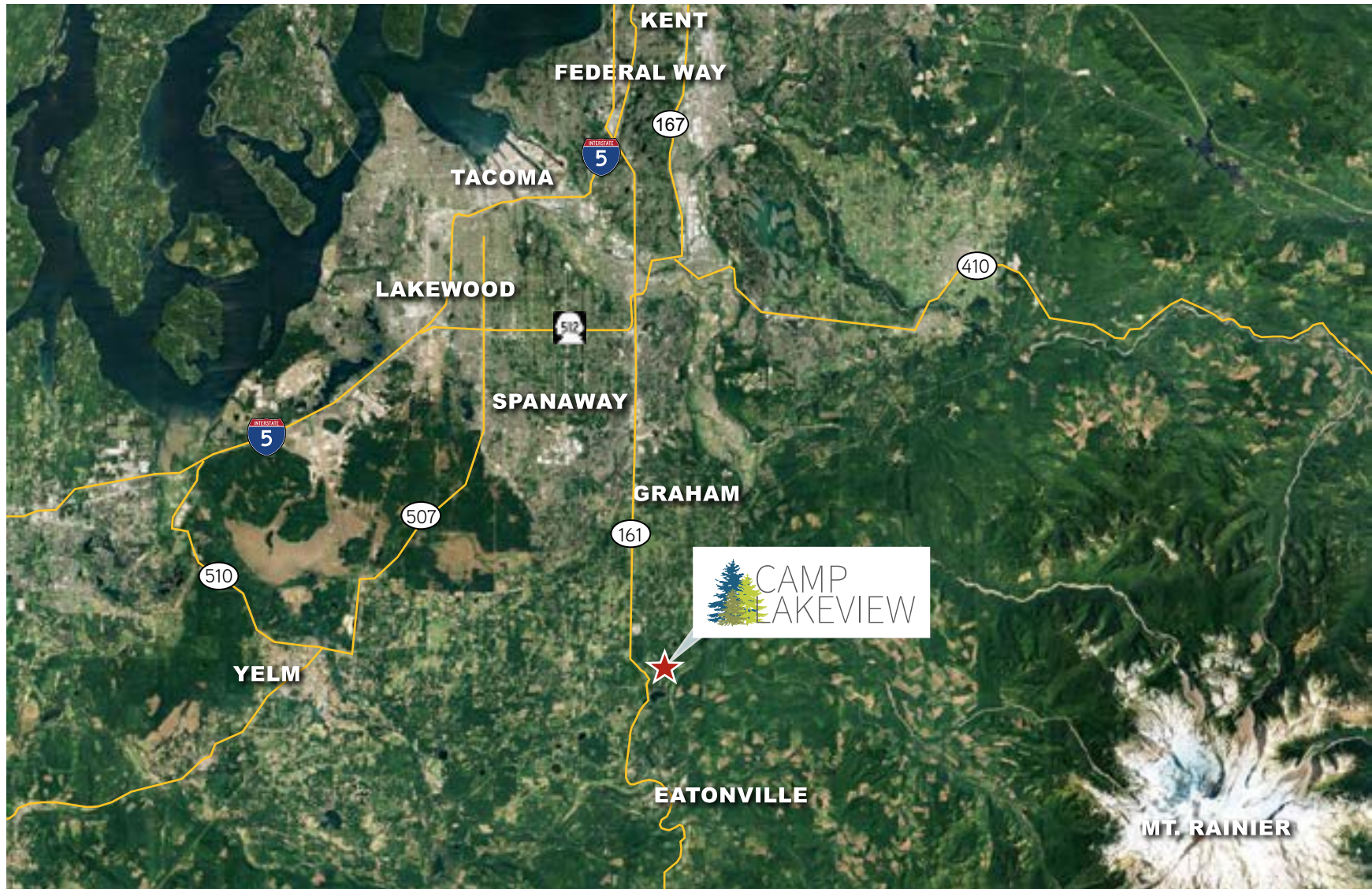
32919 Benbow Drive East
Graham, WA 98338

- One-of-a-kind lakeside development property.
- Potential uses include estate homes, private retreats, horse ranch, private RV park and resort, conference center, or year round training center.
- Property unpriced—Seller to consider all offers.
- 1,500 feet of frontage on Lake Tanwax, includes boat launch and two docks.
- Includes a 25 acre private lake.
- Water skiing and recreational boating allowed.
- Includes existing RV park for 22 with 28 additional sites and 18 partial hook up sites.
- Includes a 6,200 SF lodge that can accommodate 52 people, several, meeting halls, twelve cabins, and several homes.
- Includes a conditional use permit for approximately 140 RV sites, 50+ cottages and 25+ buildings.

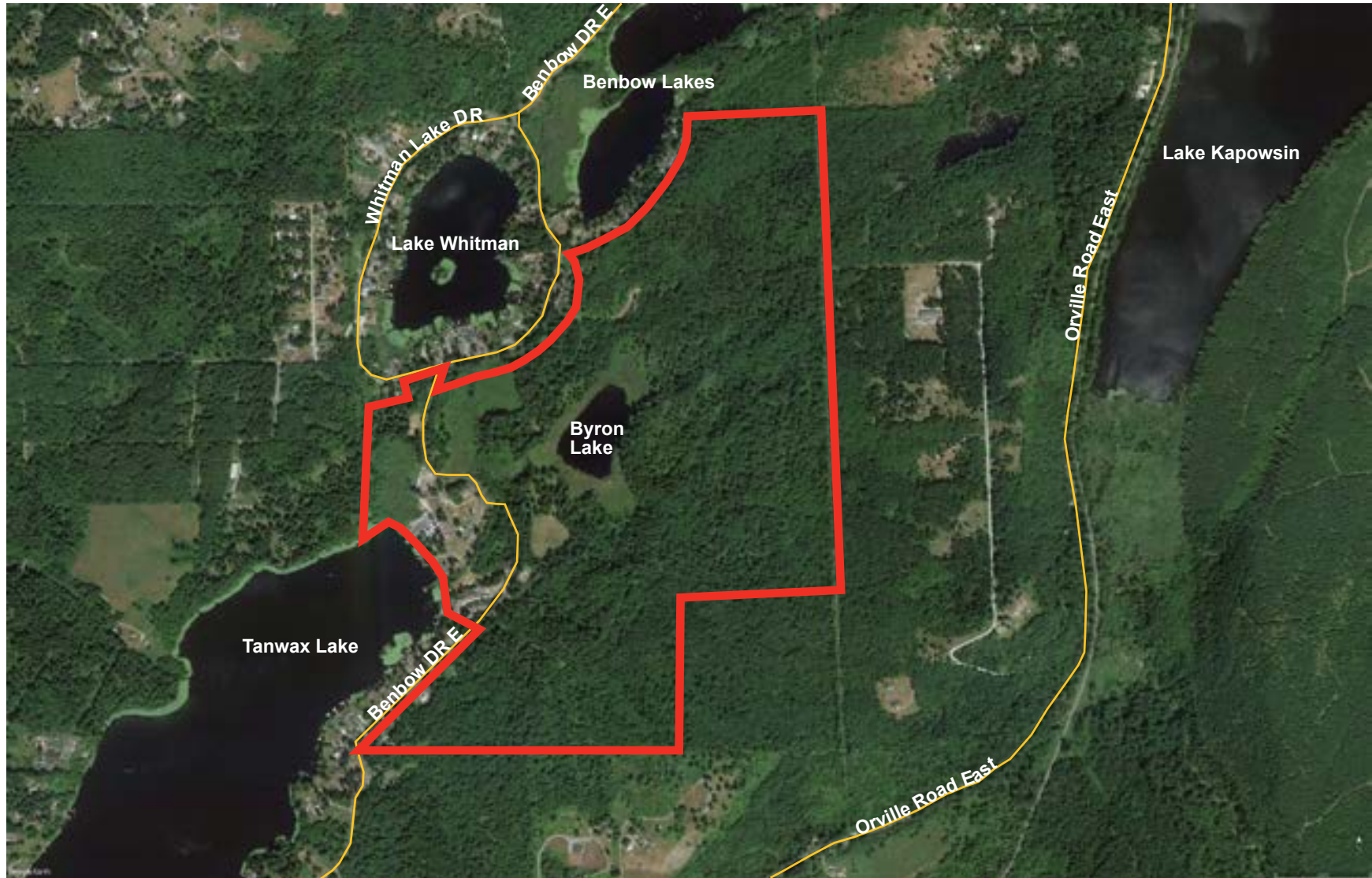


CAMP LAKEVIEW

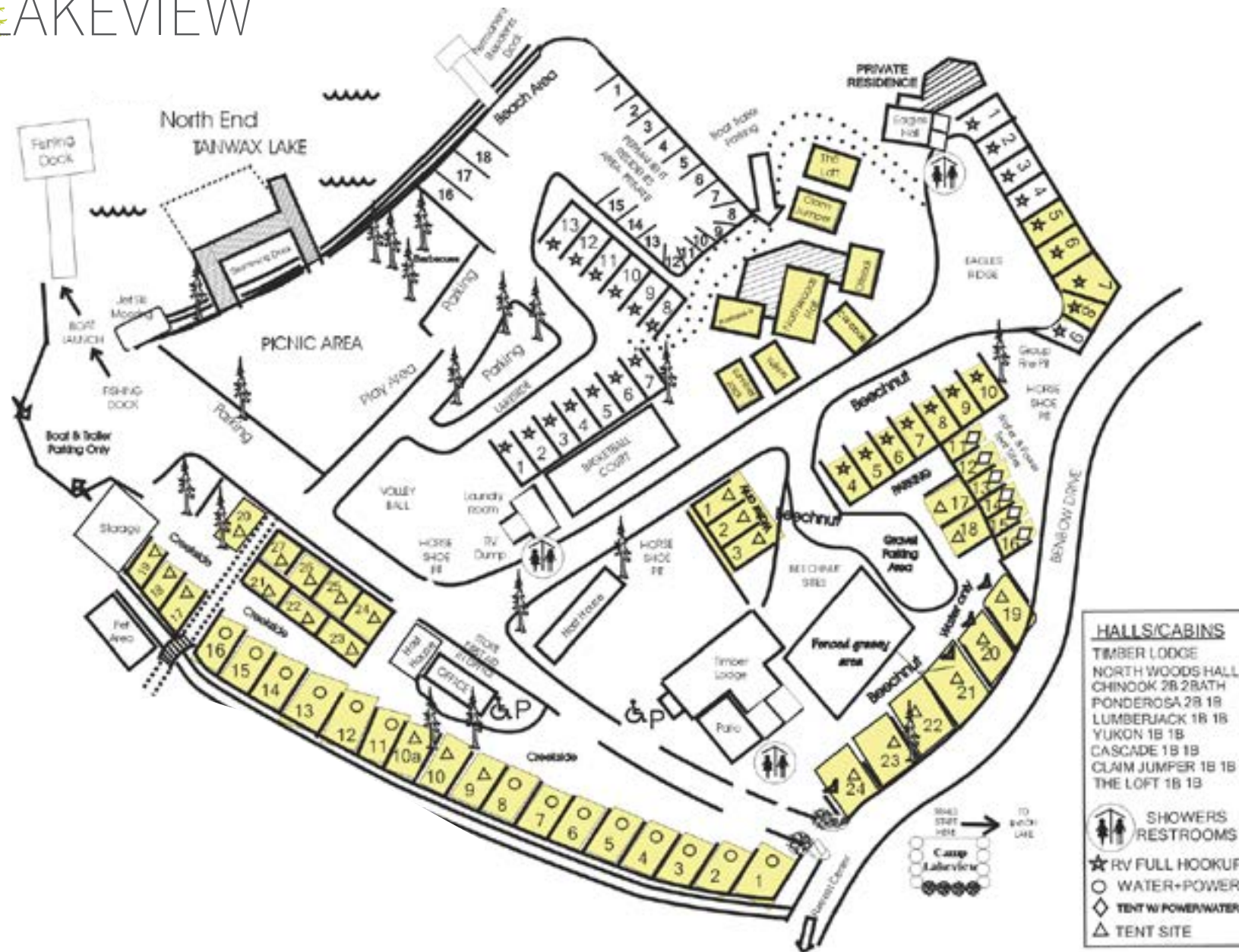
- Includes Surrounding Properties
- Approximately 300 Acres
- 20 Separate Tax Parcels



Area Map Of All Properties



CAMP LAKEVIEW



HALLS/CABINS

- TIMBER LODGE
- NORTH WOODS HALL
- CHINOOK 2B 2BATH
- PONDEROSA 2B 1B
- LUMBERJACK 1B 1B
- YUKON 1B 1B
- CASCADE 1B 1B
- CLAIM JUMPER 1B 1B
- THE LOFT 1B 1B

SHOWERS RESTROOMS

RV FULL HOOKUP

WATER+POWER

TENT W/ POWER/WATER

TENT SITE

Campground Trail Map

