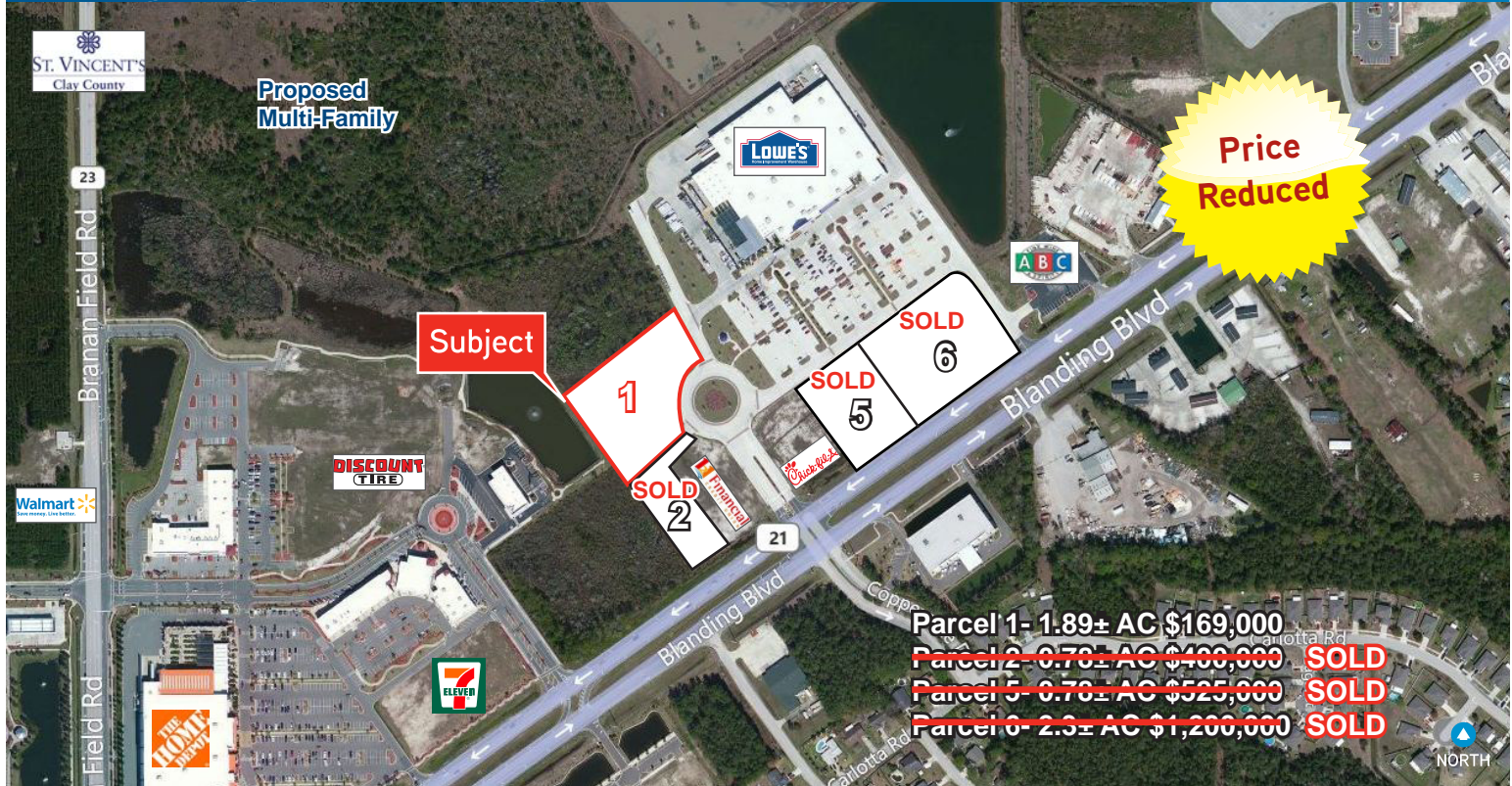


FOR SALE > LAND

Lowe's Outparcel For Sale

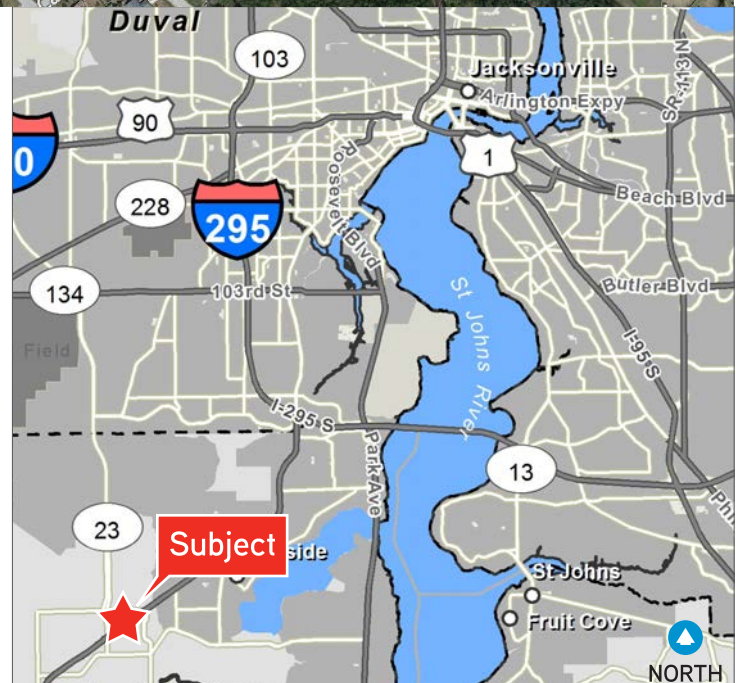
BLANDING BLVD., MIDDLEBURG, FL 32068

LOCATED JUST EAST OF BRANAN FIELD ROAD



Property Features

- > Lowe's outparcel available
- > Walmart, Home Depot and Lowe's anchor a great retail trade area
- > Traffic light into the site gives access to traffic in both directions
- > Over 40,000± cars per day on Blanding Blvd.
- > Fast food, sit down restaurants, gas stations, bank, automotive retailers and car washes are just a few of the allowable uses
- > Parcel 1: 1.89± AC ~~\$319,000~~ REDUCED TO \$169,000
- Parcel 2: 0.78± AC \$400,000 **SOLD TO PEPBOYS**
- Parcel 5: 0.78± AC \$525,000 **SOLD TO CARE SPOT**
- Parcel 6: 2.3± AC \$1,200,000 **SOLD TO ALDI**



GARY MONTOUR
Senior Vice President
+1 904 358 1206 | EXT 1116
gary.montour@colliers.com

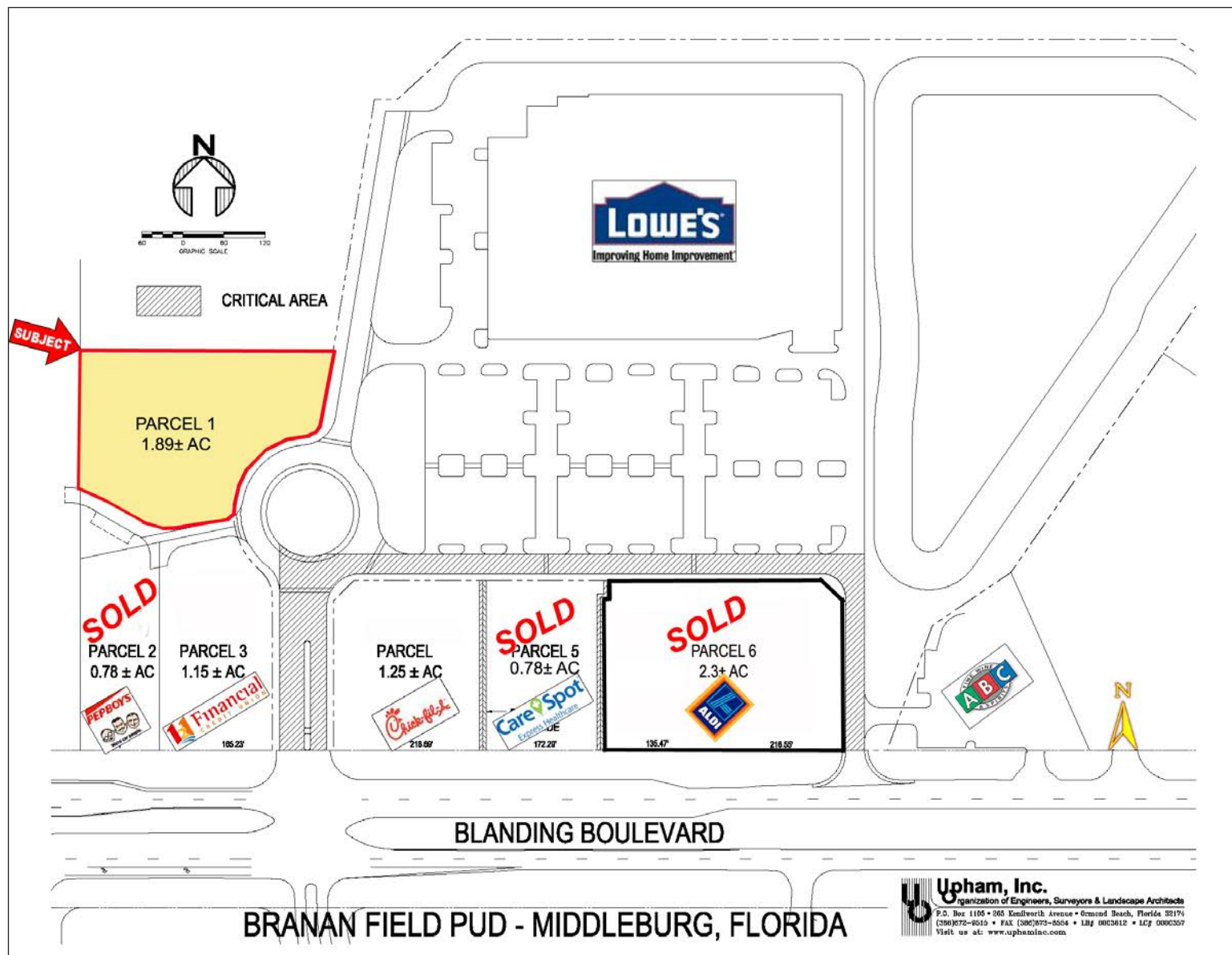
4585

JASON RYALS
Executive Vice President
+1 904 358 1206 | EXT 1136
jason.ryals@colliers.com

COLLIERS INTERNATIONAL
NORTHEAST FLORIDA
50 N Laura St, Suite 1725
Jacksonville, FL 32202
www.colliers.com/jacksonville

Site Plan

BLANDING BLVD., MIDDLEBURG, FL 32068



This document has been prepared by COLLIERS INTERNATIONAL | Northeast Florida for advertising and general information only. COLLIERS INTERNATIONAL makes no guarantees, representations or warranties of any kind, expressed or implied, regarding the information including, but not limited to, warranties of content, accuracy and reliability. Any interested party should undertake their own inquiries as to the accuracy of the information. COLLIERS INTERNATIONAL excludes unequivocally all inferred or implied terms, conditions and warranties arising out of this document and excludes all liability for loss and damages arising therefrom. COLLIERS INTERNATIONAL is a worldwide affiliation of independently owned and operated companies. This publication is the copyrighted property of COLLIERS INTERNATIONAL and /or its licensor(s). © 2018. All rights reserved.