



Accelerating success.



FOR LEASE

Asking Price:

\$18.50

PSF, FSG

Contact us:

Justin Bentley, CCIM, SIOR
+1 501 850 0739
justin.bentley@ar.colliers.com

1 Allied Drive, Suite 1500,
Little Rock, AR 72202
P: +1 501 372 6161
colliers.com/arkansas

27 Corporate Hill Drive, Little Rock, AR

For Lease: WLR Office Building

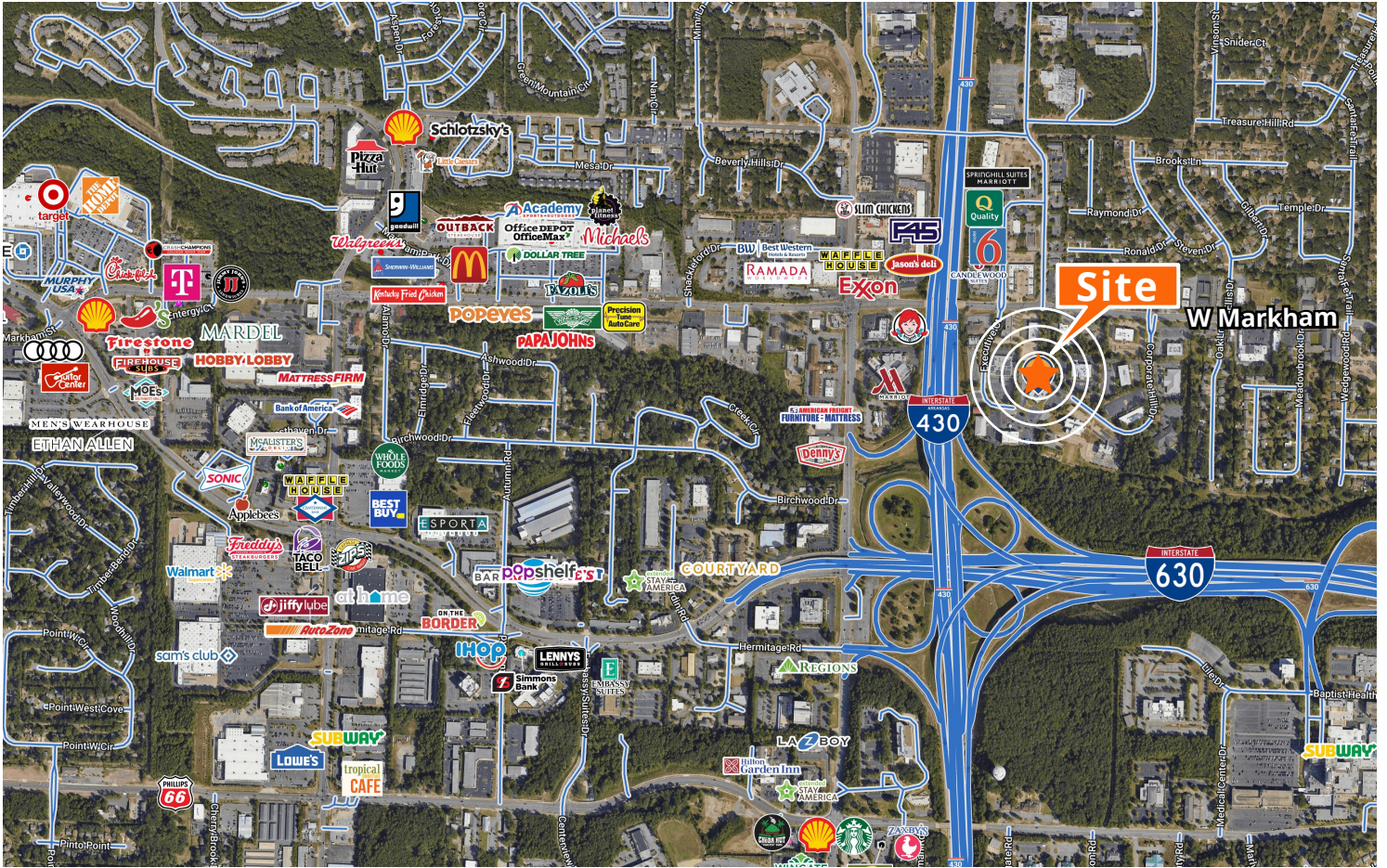
Features

- First floor space: 3,353 RSF
- Lease rate: \$18.50/SF, Full Service Gross
- Located in quiet office park setting
- Quick access to property with I-430 and I-630 within half a mile
- Lighted access from West Markham Street
- Parking ratio: 5.07/1,000

Copyright © 2025 Colliers International.

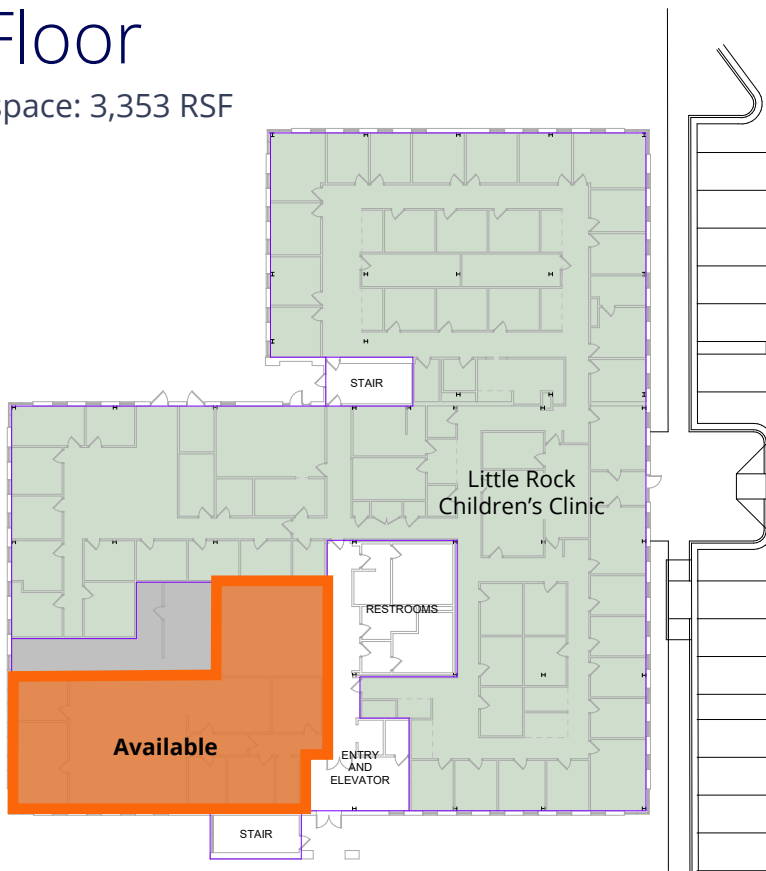
Information herein has been obtained from sources deemed reliable, however its accuracy cannot be guaranteed. The user is required to conduct their own due diligence and verification.

Neighborhood Map



First Floor

- Available space: 3,353 RSF



① Level 1 Area Plan
1" = 20'-0"

Contact us:

Justin Bentley, CCIM, SIOR
+1 501 850 0739
justin.bentley@ar.colliers.com

1 Allied Drive, Suite 1500,
Little Rock, AR 72202
P: +1 501 372 6161
colliers.com/arkansas